

Tented camp internal electrical

Current conditions

The internal reticulation requires remedial rectification to conform to SANS 10142 latest editions and standards

- The reticulation is fed by a surfix cable [estimated 2.5mm] that have the capacity of 20A maximum
- The multiplug in the tent need immediate removal since it has no RCD/RCBO protection
- The inside reticulation is not correct or safe

Correctional remedial to be implemented

Attached is drawing CP-7/4/5/3/2 TENT 1-4 FLOOR LAY OUT

Note: The remedial for electrical is limited due to power supply of 20A max hence the scope covers the total electrical installation but exclude the integration of circuits see references in document of exclusions and inclusions

Scope

For the interim we reticulate the total lay out and populate only essentials to the to the current supply on site in the tents

Note :Meaning – all points are wired and connected but not activated with power in the Db board to prevent overload and tripping these circuits require to be covered by RCD that is secondary in the system to protect all circuits and not to be used as main breaker

Rectifications and specifications

Main power supply currently

- The feeder cable surfic 2.5mm [estimated] is to be fitted into a PVC tubing and elevated to the corner of the tent as per drawing at least 1.5-1,7m above ground level into A new Distribution box is required to be installed 12 way that is UV protected and at least IP65
- It is recommended that the DB board is supported with a back board and all pvc piping to be in a cable tray protected and supported

The Db board to consist of the following disconnectors

- Main beaker not exceeding feeder cable size [recommended 20A -6KA]
- RCD- 63A no overload protection earth leakage
- Disconnector overload C/B 15A -6KA for fridge and microwave
- Disconnector overload C/B 10A -6KA for light circuits
 - The following need to be added but not powered for the rest of the internal wiring [see bottom for euro plugs only]
 - 2x 15A disconnectors overload C/B 15A-6KA for the trunking / power skirting on the floor layout
 - All pvc conduit will be properly connected into the floor skirting end caps and secure that no rodent infestation can occur
- Earthing to conform to SANS – recommended additional earth spike at each tent Wirth min 6mm isolated earth wire

Internal and external lights above door

- The lights to be bulkhead type and fitted with 6W globes

Reticulation in the entrance door frame

- All the circuits are distributed in PVC conduit [glued and fitted with the relevant connectors such as [male female straight connectors , compression glands] as and where applicable into end boxes pug boxes Db etc.
- It is recommendable that all wiring into the PVC conduits is round **Norse surfic** respectively to the cavity [front portal] for the internal and external light and switch [2lverer]
- No Twin and earth wiring are allowed in this reticulation .
- The reticulation for the Fridge and Microwave and lights [internal external] to be done in the .cavity behind the cladding
- Plug for the fridge will be a single plug and well as the microwave to conform to SANS 164-1 and SANS 164-2no other items to be incorporated into this circuit.

Note: both socket outlets to be wired and populated but only the fridge socket to be powered the microwave to be isolated [for future integration]

Floor circuits and power skirting

- All other surfic to be removed from the tents including multiplugs and equipment not conforming
- From the distribution board the reticulation will be in corporates in a side installed ground mounted power skirting

Recommended floor mounted skirting

- P802 or similar steel single compartment skirting
- End cap's, 90-degree elbow flat [inter jointing /interlocking] covers and connectors , to be used
- No cutting or joining of skirting use interlocking elbows and end caps
- Sockets such slim line sockets 3-point sockets covers and boxes for equipment and integration compatibility into the floor power skirting to conform to SANS regulations

- All sockets' outlets as per drawing will consist of at least
 - One 3-point socket outlet with independent switch
 - 2 slim line euro sockets with one independent switch

- All skirting to be fixed and secure on the edge of the tents and well earthed

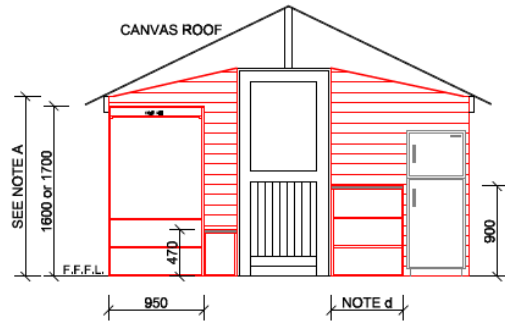
Note: the slim line euro sockets at the bed head set to be powered for bed lamps only all other sockets in the power skirting to be reticulated but isolated

Legal requirements

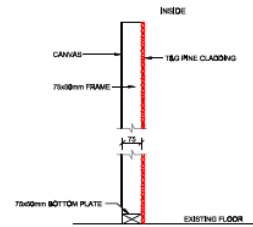
This installation is required to conform to SANS 10142 latest addition and tested in full including sockets and circuits excluded from power for this exercise to ensure all points where electrical compliant for work was conducted under this cope are safe and compliant

And a full [COC] is issued to the Park to cover all work done

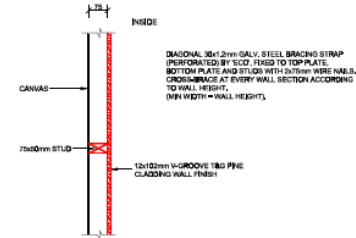
Camdeboo NP Tents -Maintenance Electrical scope 2026



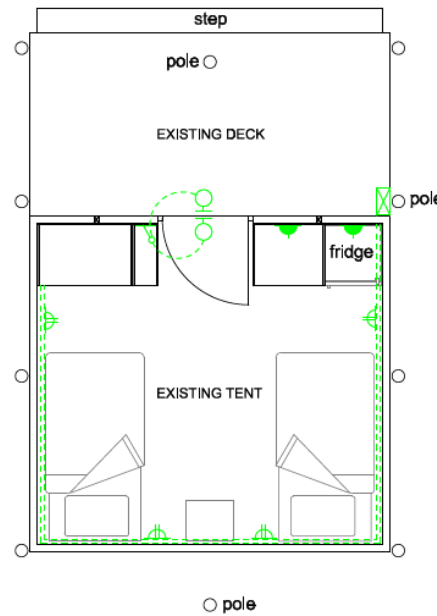
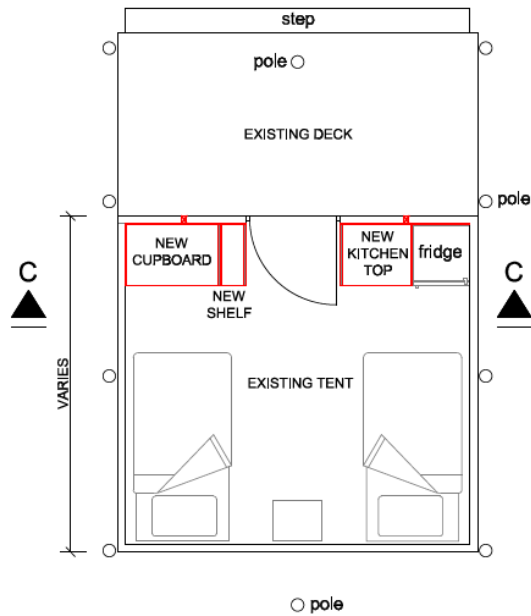
SECTION C-C



SECTION WALL CLADDING
SCALE 1:20



PLAN CLADDING TO WALL
SCALE 1:20



ELECTRICAL LAYOUT IS ONLY SCHEMATIC AND NOT A DESIGN

ELECTRICAL LEGEND	
	SINGLE WALL SOCKET (3-POINT) AT 1200mm A.F.F.L.
	OUTLET WITH 1x3-PIN AND 2 x EURO SWITCHED SOCKET AT 1200mm A.F.F.L.
	DOUBLE LEVER LIGHT SWITCH AT 1200mm AFFFL
	WALL MOUNTED WEATHERPROOF LIGHT FITTING ABOVE DOOR
	DISTRIBUTION BOARD
	FLOOR LEVEL POWER SKIRTING