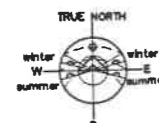
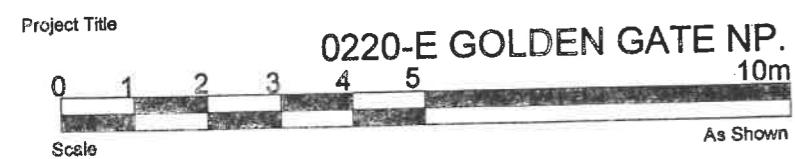
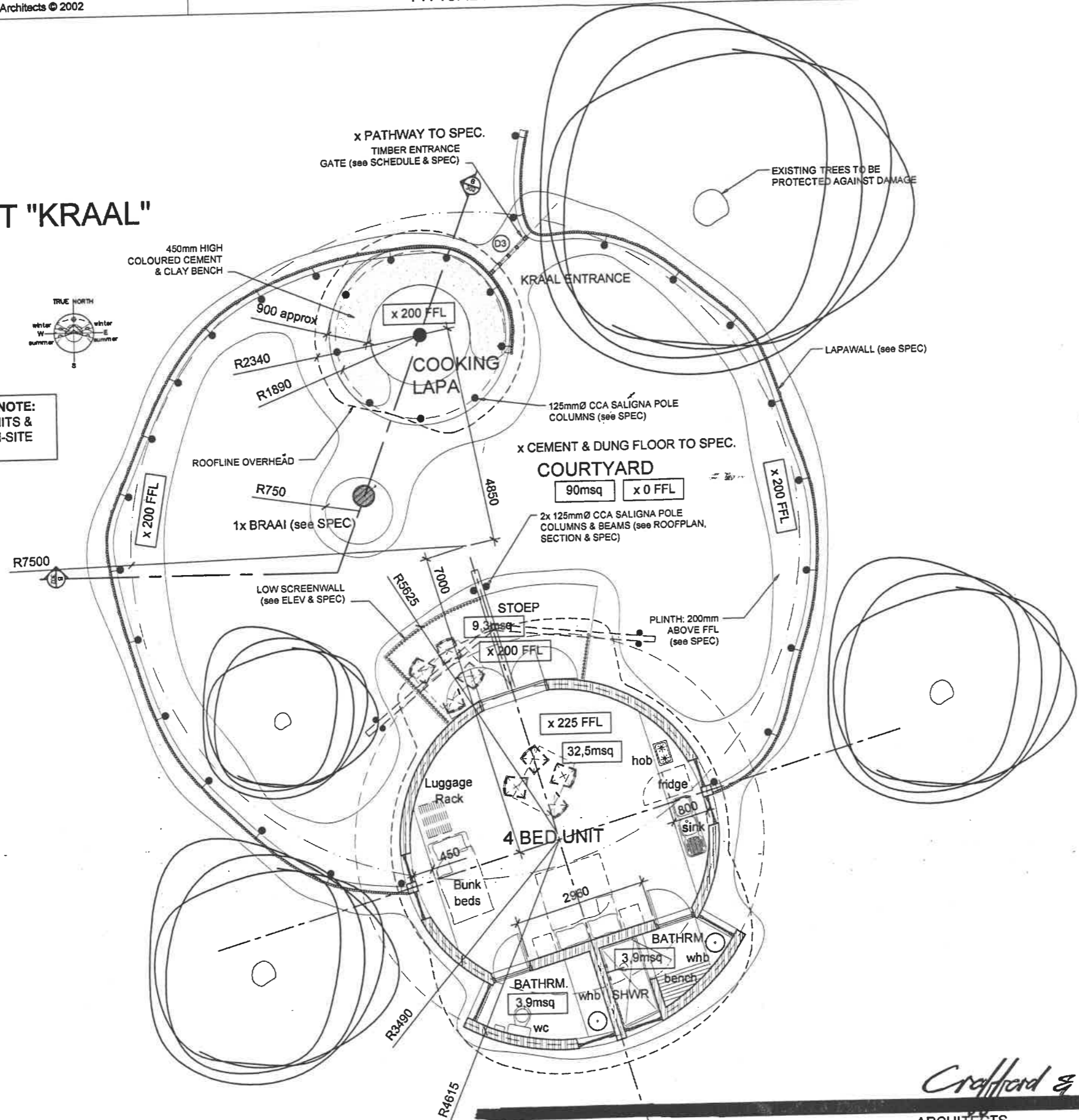


**1 UNIT "KRAAL"**



**NOTE:**  
 POSITIONS OF INDIVIDUAL UNITS &  
 KRAALS TO BE FINALIZED ON-SITE

**PROVISIONAL  
 VOORLOPIG**



*Crafford & Crafford*

ARCHITECTS  
 TEL(012) 362 3992

ARGITEKTE  
 FAX(012) 362 9025

7, FIRST STREET, MENLOPARK, PRETORIA, GAUTENG 0081  
 E-MAIL admin@ccarchitects.co.za

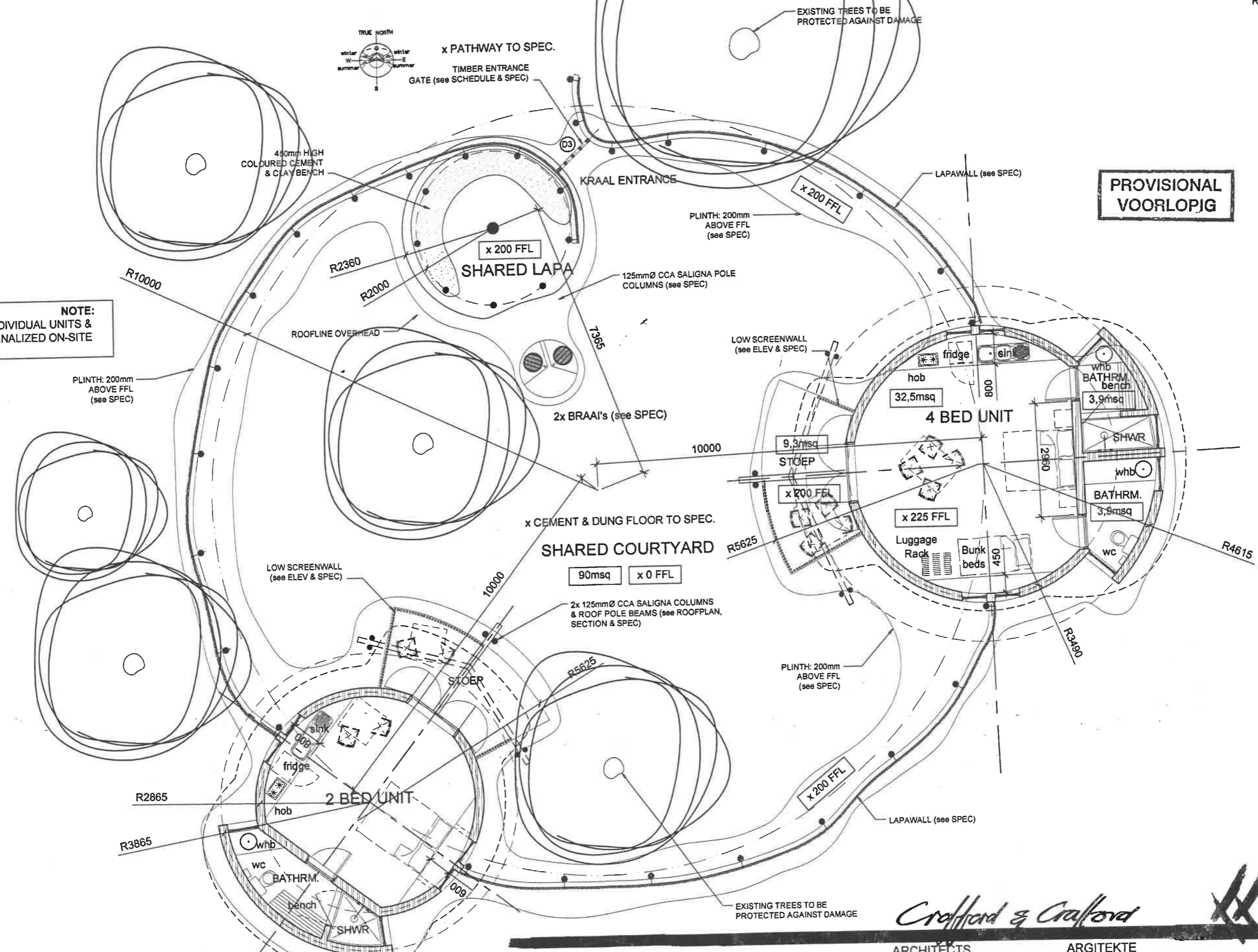
ALL LOCAL & NATIONAL BUILDING REGULATIONS MUST BE COMPLIED WITH. ALL DIMENSIONS TO BE CHECKED ON SITE  
THIS DRAWING TO BE USED ONLY ON ORIGINAL DESIGNATED SITE UNLESS OTHERWISE AGREED BY ARCHITECTS  
Copyright Reserved Crafford & Crafford Architects © 2002

Drawing Title  
**2 UNIT "KRAAL" TYPICAL KRAAL PLAN LAYOUT (x2 UNITS)**

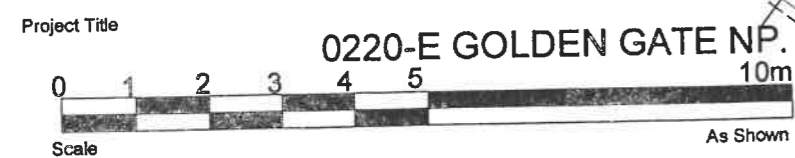
Tekening Naam

Drawn	PN	Geteken	Project 0220-E	Projek	TEK # DWG
Scale 1:100		Skaal	Date 20.10.2003	Datum	202

REVISION WYSIGING  
A



**NOTE:**  
POSITIONS OF INDIVIDUAL UNITS & KRAALS TO BE FINALIZED ON-SITE



*Crafford & Crafford*  
ARCHITECTS  
TEL(012) 362 3992  
7, FIRST STREET, MENLOPARK, PRETORIA, GAUTENG 0081  
E-MAIL admin@ccarchitects.co.za

ARGITEKTE  
FAX(012) 362 9025

ALL LOCAL & NATIONAL BUILDING REGULATIONS MUST BE COMPLIED WITH. ALL DIMENSIONS TO BE CHECKED ON SITE  
THIS DRAWING TO BE USED ONLY ON ORIGINAL DESIGNATED SITE UNLESS OTHERWISE AGREED BY ARCHITECTS  
Copyright Reserved Crafford & Crafford Architects © 2002

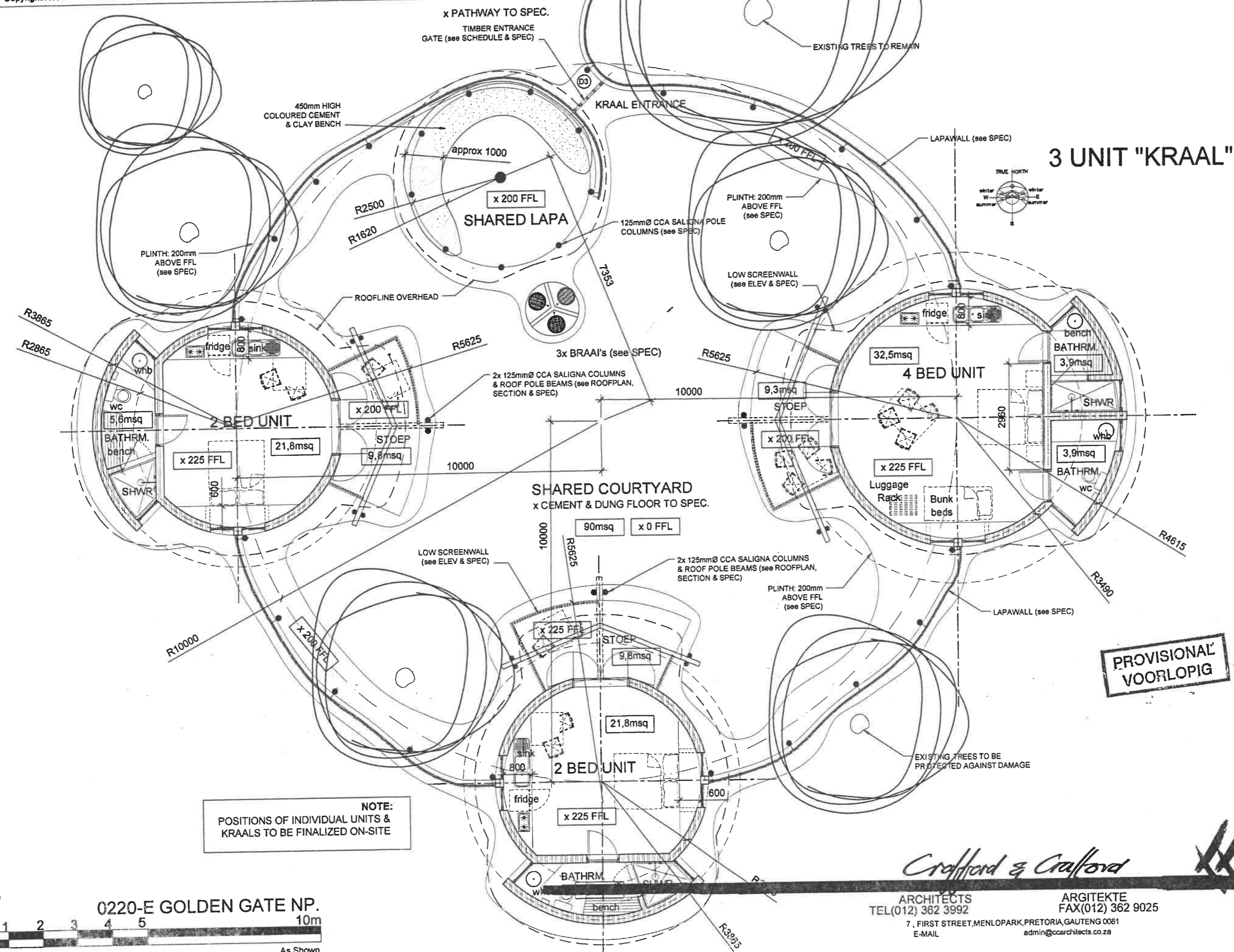
Drawing Title

TYPICAL KRAAL PLAN LAYOUT (x3 UNITS)

Tekening Naam

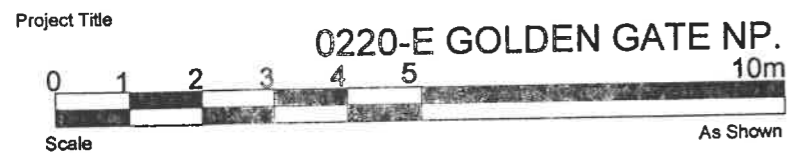
Drawn	PN	Geteken	Project 0220-E	Projek	TEK # DWG
Scale	1 : 100	Skaal	Date 20.10.2003	Datum	203

REVISION WYSIGING  
A



NOTE:  
POSITIONS OF INDIVIDUAL UNITS &  
KRAALS TO BE FINALIZED ON-SITE

PROVISIONAL  
VOORLOPIG

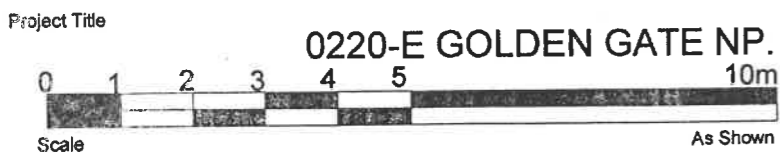
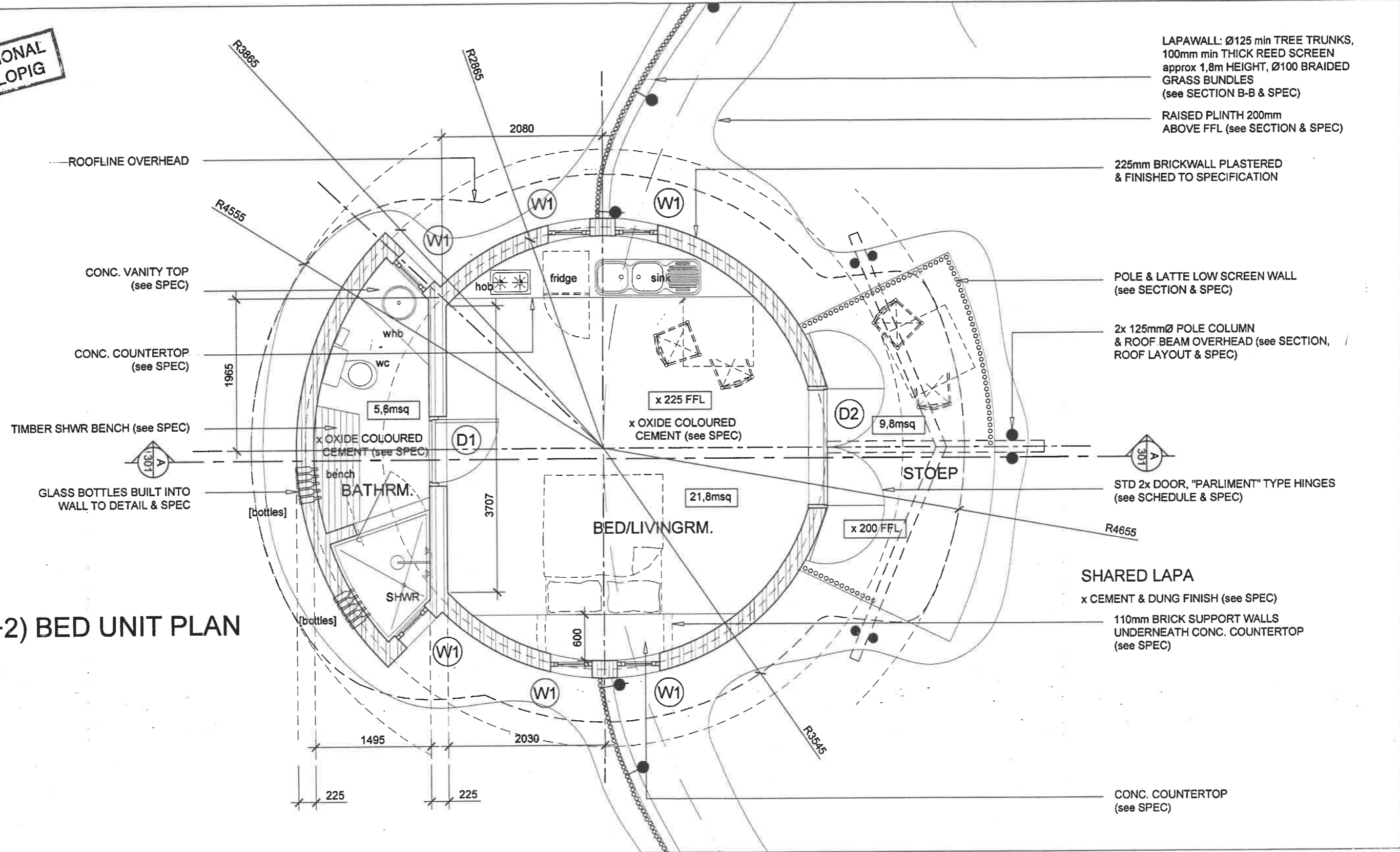


*Crafford & Crafford*  
 ARCHITECTS  
 TEL(012) 362 3992  
 7, FIRST STREET, MENLOPARK, PRETORIA, GAUTENG 0081  
 E-MAIL: admin@ccarchitects.co.za

ARGITEKTE  
 FAX(012) 362 9025

**PROVISIONAL  
VOORLOPIG**

**2(+2) BED UNIT PLAN**



*Crafford & Crafford*

ARCHITECTS  
TEL(012) 362 3992  
7, FIRST STREET, MENLOPARK, PRETORIA, GAUTENG 0081  
E-MAIL

ARGITEKTE  
FAX(012) 362 9025  
admin@ccarchitects.co.za

CONC. SLAB CAST ON x2 110mm  
 WALLS @ 850mm ABOVE FFL  
 ROOFLINE-OVERHEAD

GLASS BOTTLES BUILT INTO  
 WALL TO DETAIL & SPEC

**PROVISIONAL  
 VOORLOPIG**

CONC. VANITY TOP  
 (see SPEC)

670x925mm TIMBER  
 WINDOW & FRAME  
 (see SCHEDULE & SPEC)

TIMBER SHWR BENCH (see SPEC)

LAPAWALL: Ø125 min TREE TRUNKS,  
 100mm min THICK REED SCREEN  
 approx 1,8m HEIGHT, Ø100 BRAIDED  
 GRASS BUNDLES  
 (see SECTION B-B & SPEC)

RAISED PLINTH 200mm  
 ABOVE FFL (see SECTION & SPEC)

225mm BRICKWALL PLASTERED  
 & FINISHED TO SPECIFICATION

POLE & LATTE LOW SCREEN WALL  
 (see SECTION & SPEC)

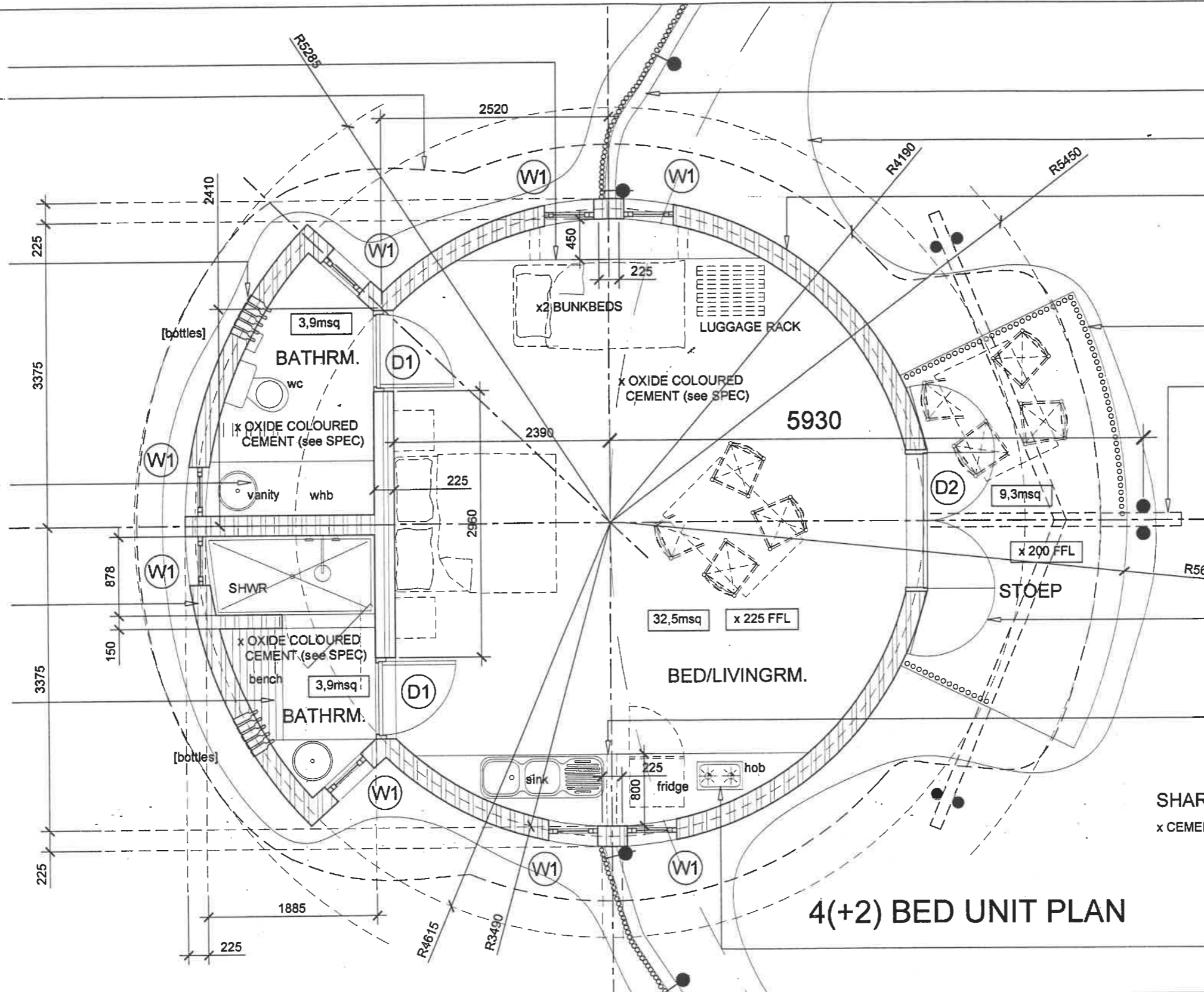
2x 125mmØ POLE COLUMN  
 & ROOF BEAM OVERHEAD (see SECTION,  
 ROOF LAYOUT & SPEC)

STD 2x DOOR, "PARLIMENT" TYPE HINGES  
 (see SCHEDULE & SPEC)

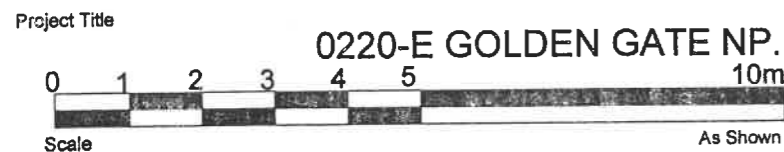
110mm BRICK SUPPORT WALLS  
 UNDERNEATH CONC. COUNTERTOP  
 (see SPEC)

SHARED LAPA  
 x CEMENT & DUNG FINISH (see SPEC)

CONC. COUNTERTOP  
 (see SECTION & SPEC)



**4(+2) BED UNIT PLAN**



*Crafford & Crafford*

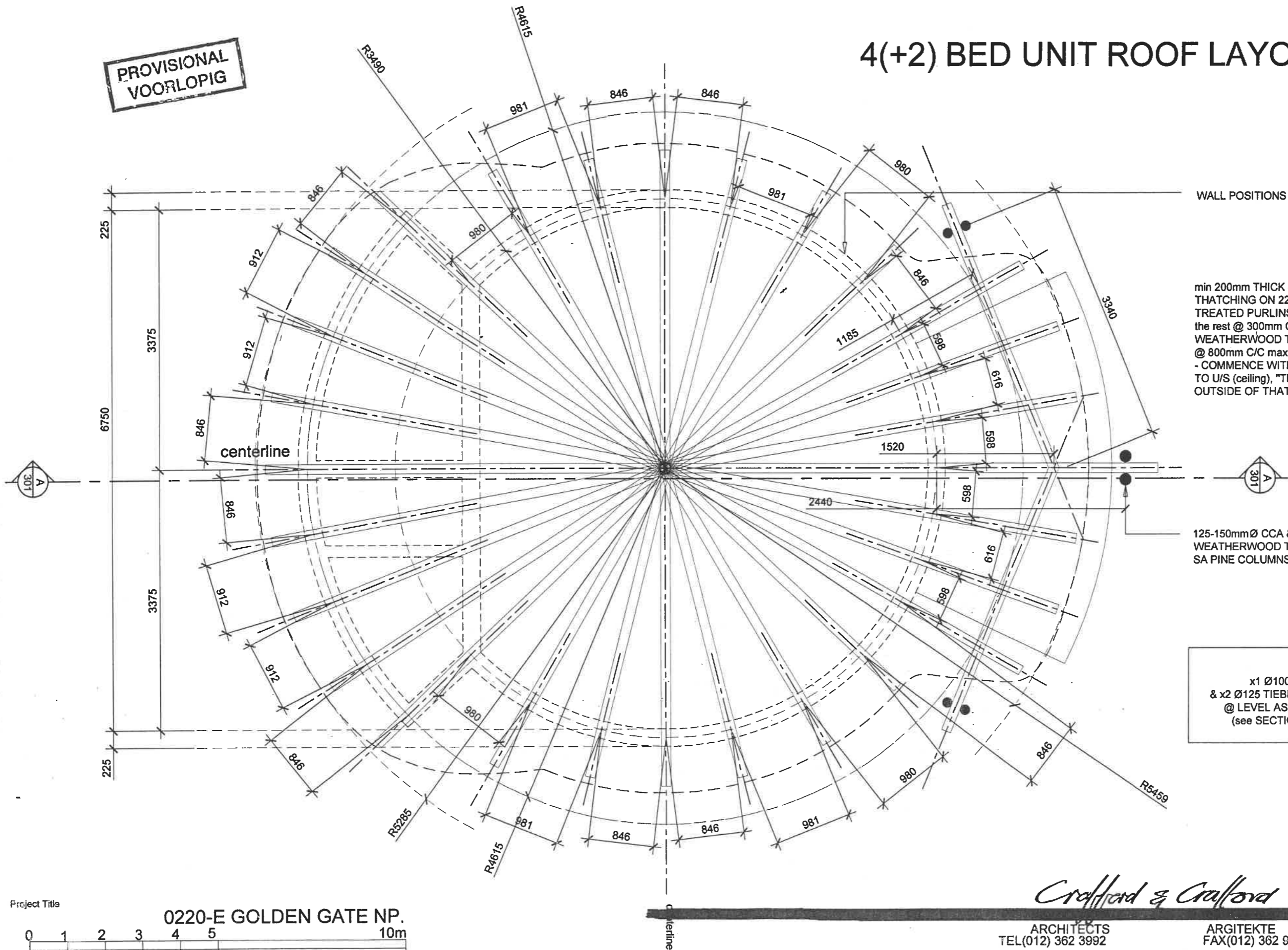
ARCHITECTS  
 TEL(012) 362 3992  
 7, FIRST STREET, MENLOPARK, PRETORIA, GAUTENG 0081  
 E-MAIL

ARGITEKTE  
 FAX(012) 362 9025  
 admin@ccarchitects.co.za



# 4(+2) BED UNIT ROOF LAYOUT

**PROVISIONAL  
VOORLOPIG**

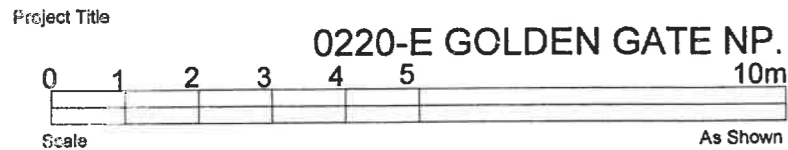


WALL POSITIONS

min 200mm THICK STEPPED & LAYERED  
THATCHING ON 22-50mm CCA & WEATHERWOOD  
TREATED PURLINS (1st 3 PURLINS @ 150mm C/C)  
the rest @ 300mm C/C MAX, ON 125 Ømm CCA &  
WEATHERWOOD TREATED SA PINE POLES  
@ 800mm C/C max (TO ENGIN.'s SPEC.)  
- COMMENCE WITH 25mm "KAAPSE DEKRIET" LAYER  
TO U/S (ceiling), "TRANSVAALSE DEKGRAS" ON  
OUTSIDE OF THATCH (see SPEC)

125-150mm Ø CCA &  
WEATHERWOOD TREATED  
SA PINE COLUMNS

**NOTE:**  
x1 Ø100 KINGPOST  
& x2 Ø125 TIEBEAM POLES  
@ LEVEL AS INDICATED  
(see SECTION & SPEC)



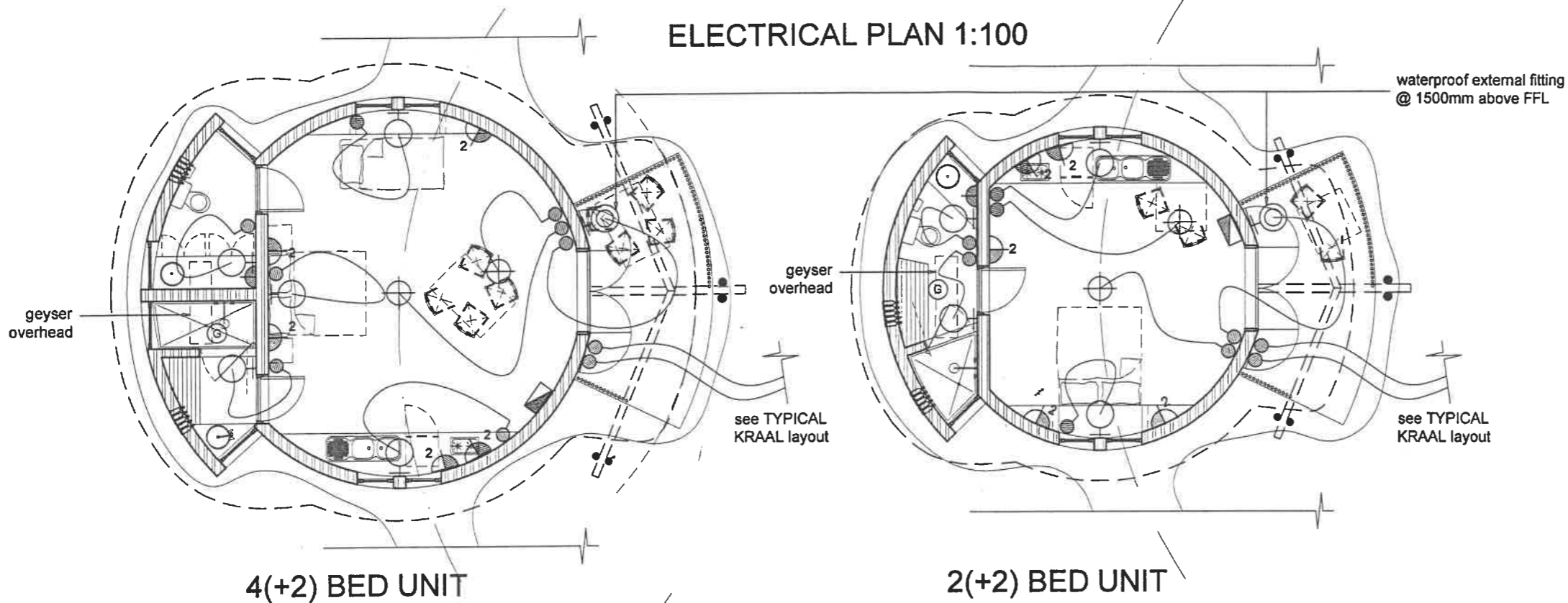
*Crafford & Crafford*

ARCHITECTS  
TEL(012) 362 3992

ARGITEKTE  
FAX(012) 362 9025

7, FIRST STREET, MENLOPARK, PRETORIA, GAUTENG 0081  
E-MAIL: admin@ccarchitects.co.za

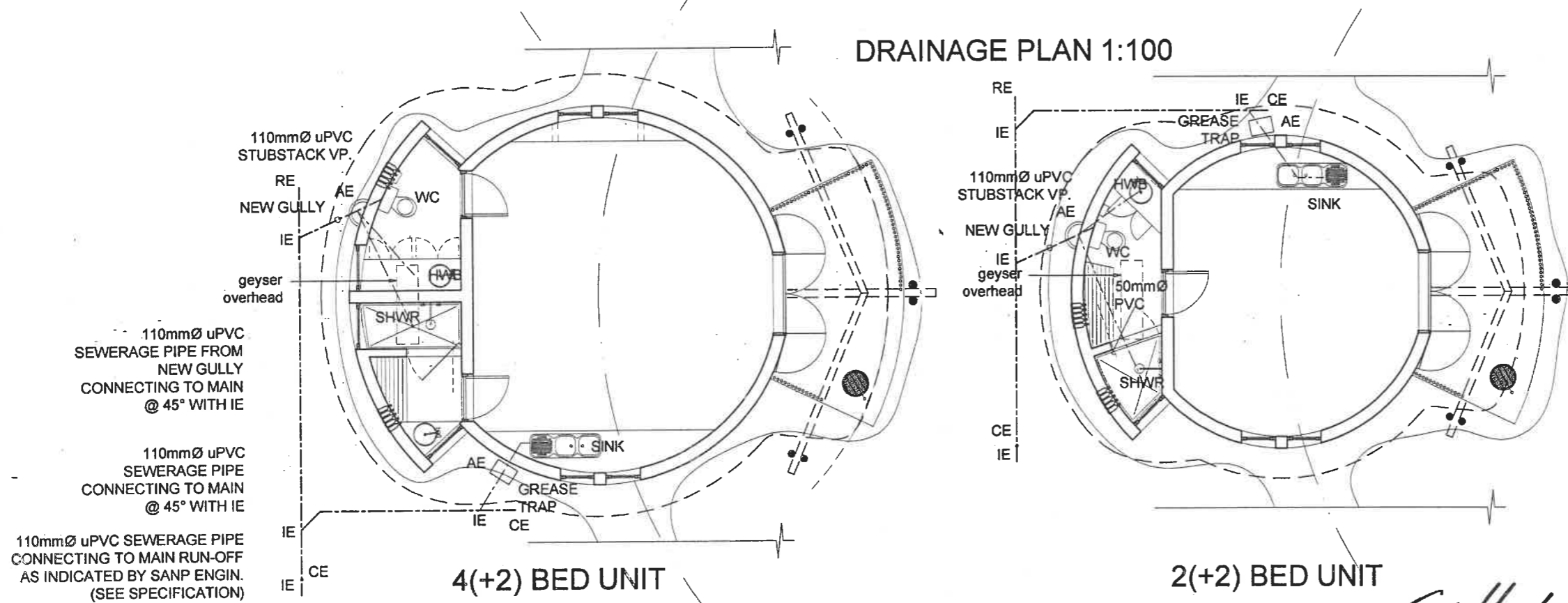
**ELECTRICAL PLAN 1:100**



**ELECTRICAL KEY**

	CEILING MOUNTED LIGHT POINT
	SINGLE WALL SOCKET, HEIGHT AS INDICATED ON PLAN
	DOUBLE WALL SOCKET, HEIGHT AS INDICATED ON PLAN
	WATERPROOF WALL SOCKET - SHAVER & DRYER
	WALL MOUNTED LIGHT FITTING, 2200MM ABOVE FLOOR OR AS INDICATED ON PLAN
	1,5m DOUBLE FLOURESCANT LIGHT FITTING
	LIGHT SWITCH, 1445mm ABOVE FLOOR LEVEL
	TWO WAY LIGHT SWITCH, 1445mm ABOVE FLOOR LEVEL
	GEYSER CONNECTION POINT/ 150L KWIKOT GEYSER HORIZONTALLY INSTALLED IN ROOF AREA
	WATERTIGHT WALL MOUNTED LIGHT FITTING, 2200 ABOVE FLOOR LEVEL
	COVERED DB BOARD - TOP @ 1,8m (COLOUR TO ARCH)
	TV ANTENNA
	TELEPHONE POINT, 300mm ABOVE FLOOR LEVEL
	DUAL SPEED FAN SWITCH

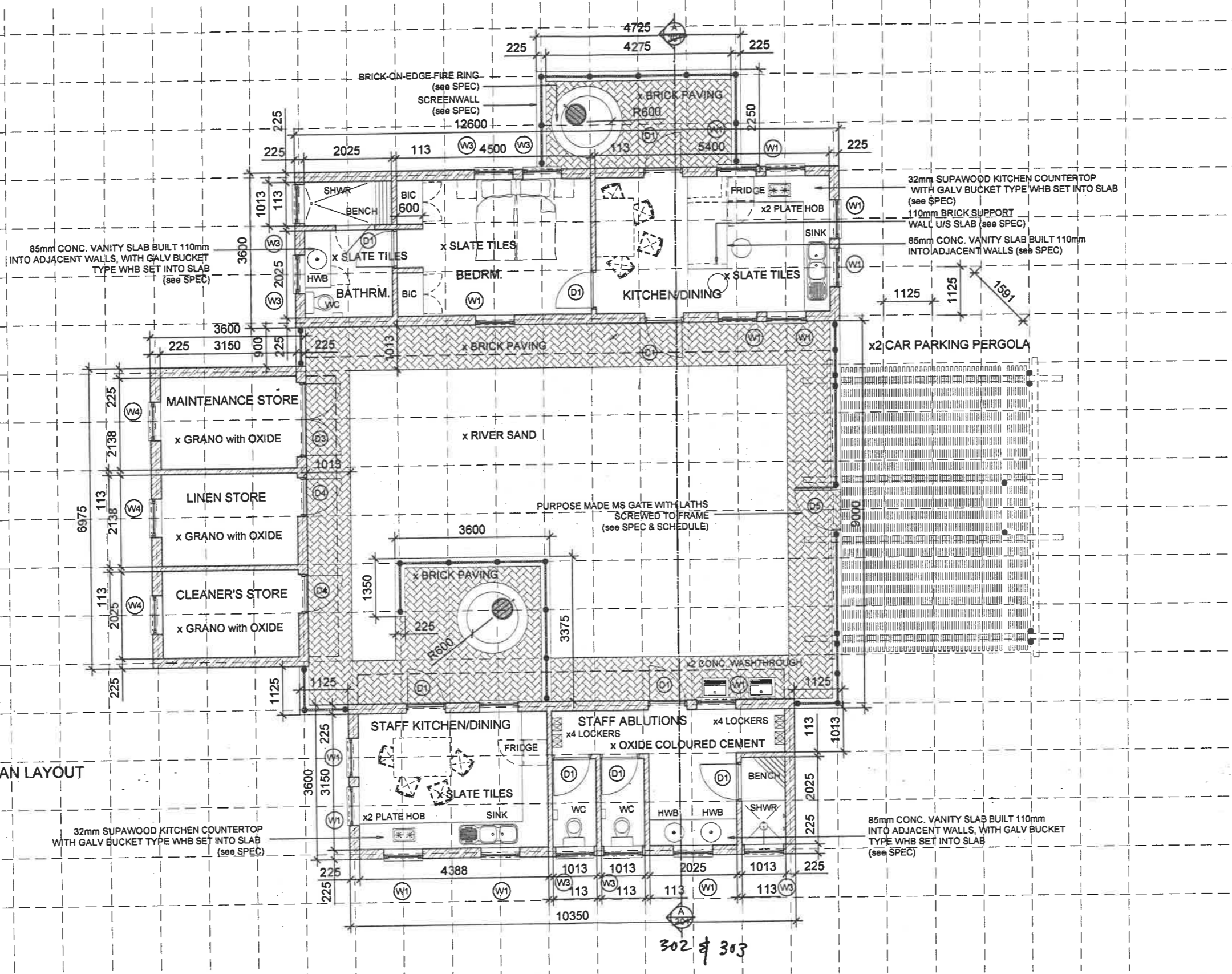
**DRAINAGE PLAN 1:100**



**PROVISIONAL VOORLOPIG**

**PROVISIONAL VOORLOPIG**

PLAN LAYOUT



Project Title

**0220-E GOLDEN GATE NP.**



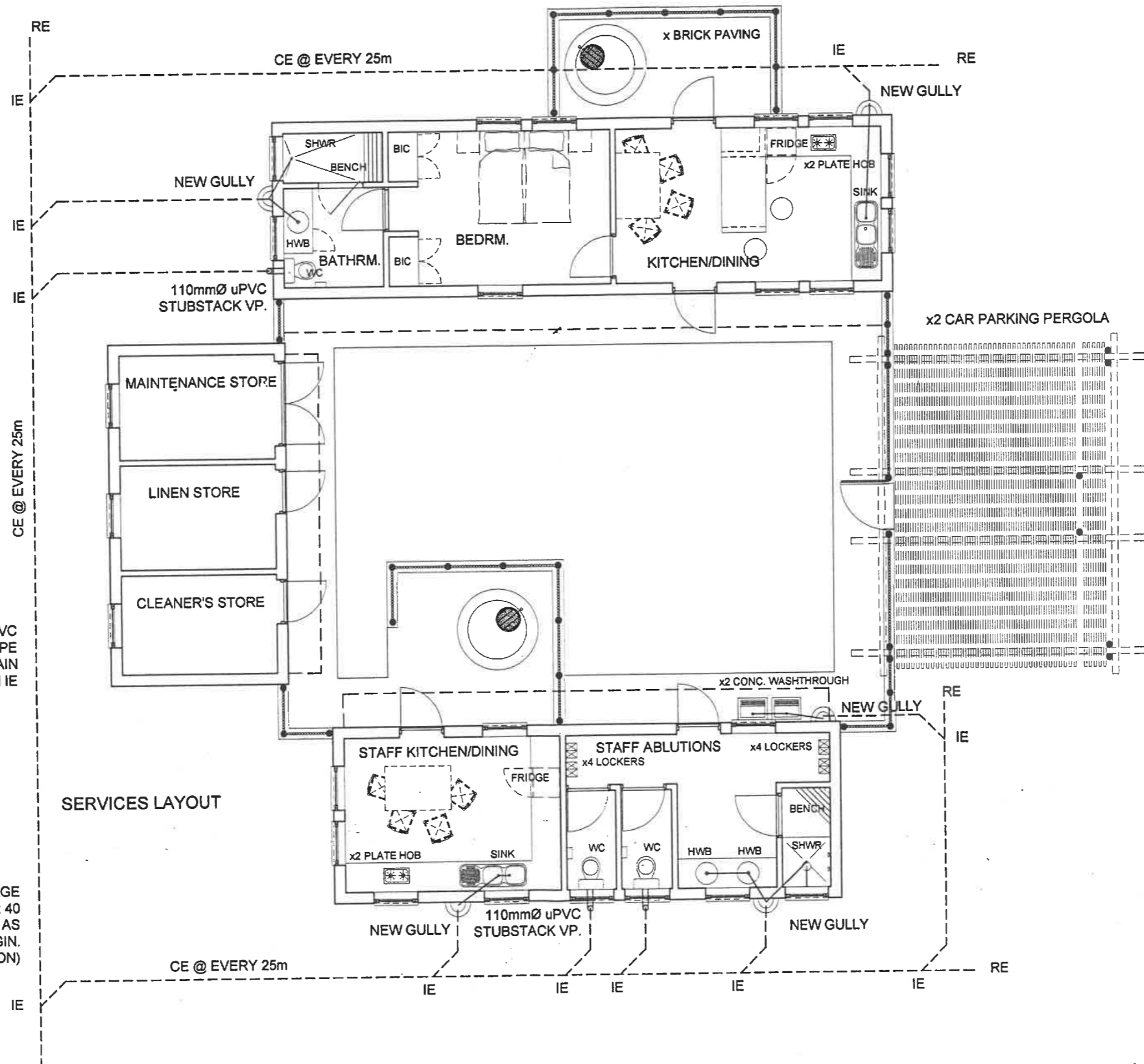
*Crafford & Crafford*

ARCHITECTS  
TEL(012) 362 3992  
7, FIRST STREET, MENLO PARK, PRETORIA, GAUTENG 0081  
E-MAIL

ARGITEKTE  
FAX(012) 362 9025  
admin@ccarchitects.co.za

302 of 303

**PROVISIONAL  
VOORLOPIG**



110mmØ uPVC  
SEWERAGE PIPE  
CONNECTING TO MAIN  
@ 45° WITH IE

110mmØ uPVC SEWERAGE  
PIPE @ min FALL 1:40  
CONNECTING TO MAIN AS  
INDICATED BY SANP ENGIN.  
(see SPECIFICATION)

Project Title

**0220-E GOLDEN GATE NP.**



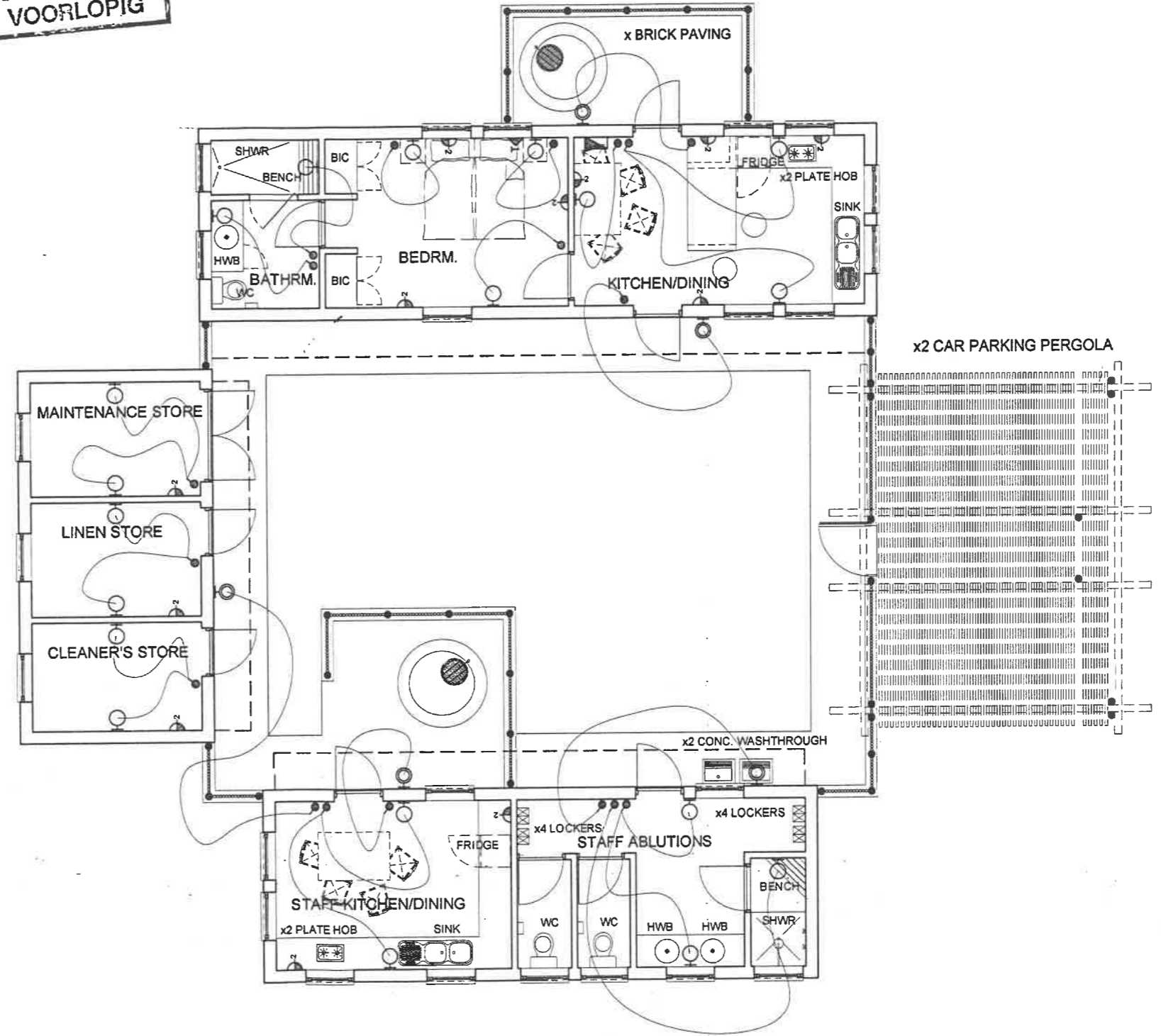
*Crafford & Crafford*

ARCHITECTS  
TEL(012) 362 3992  
7, FIRST STREET, MENLOPARK, PRETORIA, GAUTENG 0081  
E-MAIL

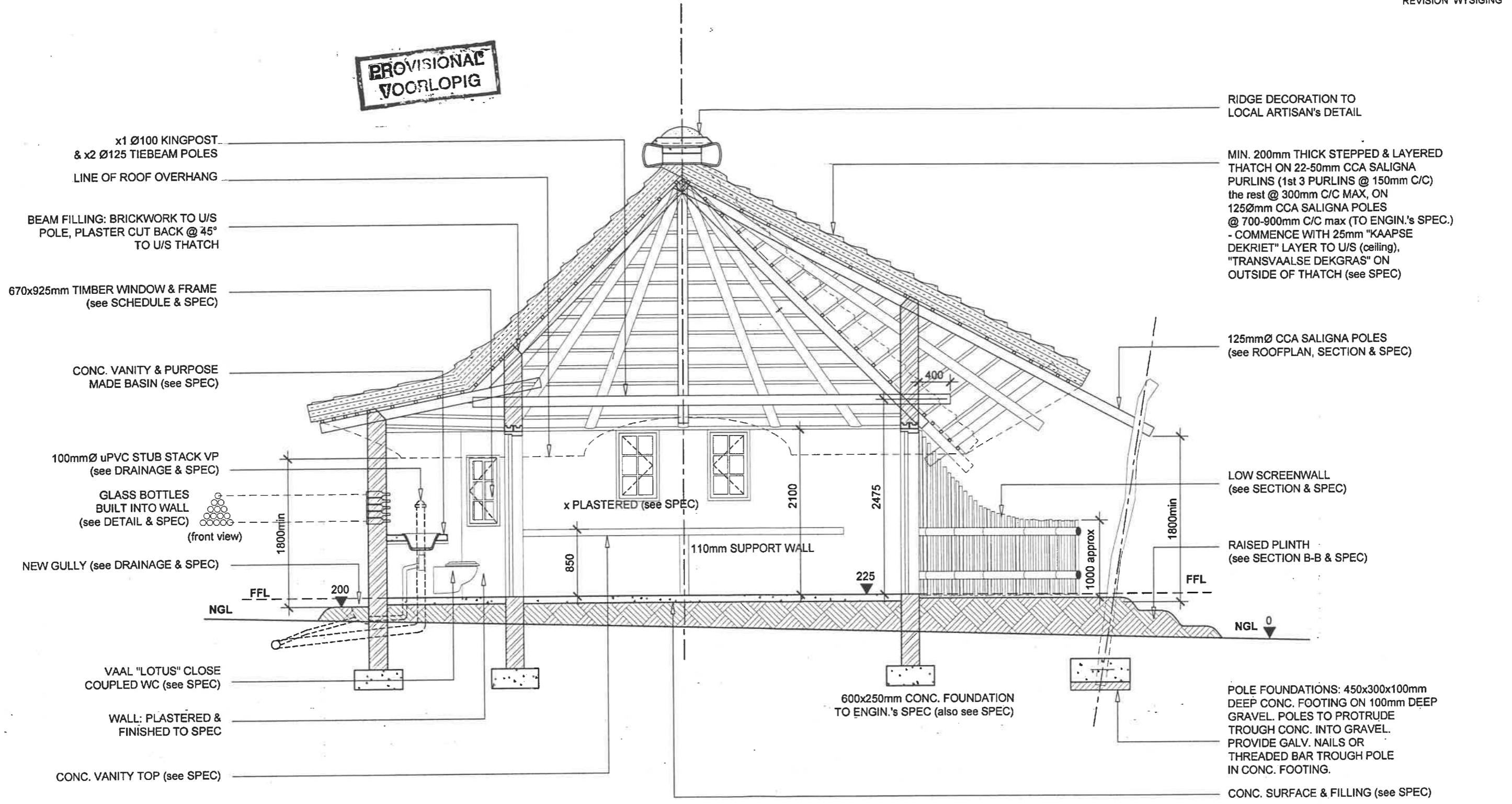
ARGITEKTE  
FAX(012) 362 9025  
admin@ccarchitects.co.za

**PROVISIONAL  
VOORLOPIG**

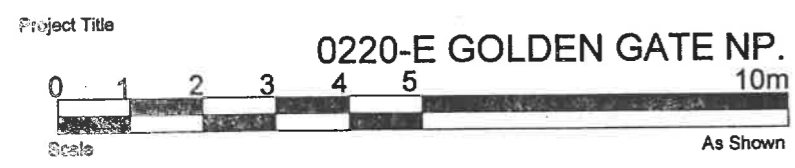
ELECTRICAL KEY	
	CEILING MOUNTED LIGHT POINT
	SINGLE WALL SOCKET, HEIGHT AS INDICATED ON PLAN
	DOUBLE WALL SOCKET, HEIGHT AS INDICATED ON PLAN
	WATERPROOF WALL SOCKET
	WALL MOUNTED LIGHT FITTING, 2200MM ABOVE FLOOR OR AS INDICATED ON PLAN
	1,5m DOUBLE FLOURESCANT LIGHT FITTING
	LIGHT SWITCH, 1445mm ABOVE FLOOR LEVEL
	TWO WAY LIGHT SWITCH, 1445mm ABOVE FLOOR LEVEL
	GEYSER CONNECTION POINT/ 150L KWIKOT GEYSER HORIZONTALLY INSTALLED IN ROOF AREA
	WATERTIGHT WALL MOUNTED LIGHT FITTING, 2200 ABOVE FLOOR LEVEL
	DB BOARD - TOP AT 1800mm
	TV ANTENNA
	TELEPHONE POINT, 300mm ABOVE FLOOR LEVEL
	DUAL SPEED FAN SWITCH
	TRACK WITH TWO SPOTLIGHTS (WHITE) CEILING MOUNTED
	PENDANT LIGHT FITTING SUPPLIED BY INTERIOR
	CLIPSAF FAN CEILING SWEEP 56" ALUMINIUM BLADE. CODE: ACCESSALWE. PAINTED BLACK.
	CLIPSAF S2000 SERIES: 100X100 FLUSH 60amp DOUBLE POLE ISOLATOR. CODE: ST2031060WE. HEIGHT INDICATED ON PLAN
	SPOT UPLIGHTER 2200 ABOVE FLOOR LEVEL



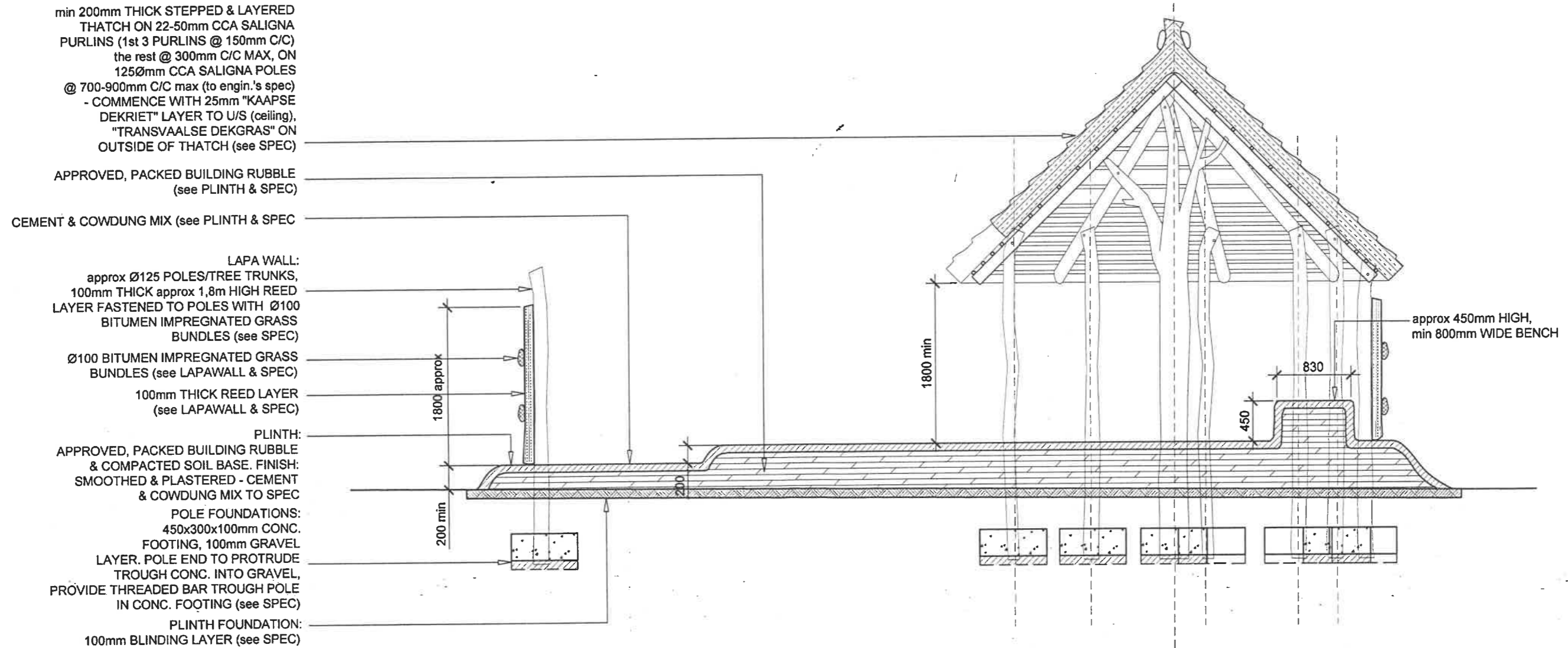
**PROVISIONAL VOORLOPIG**



**SECTION A-A: 2(+2) BED UNIT SECTION - TYPICAL SECTION**



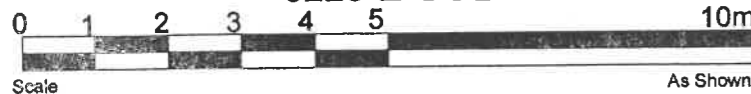
**PROVISIONAL  
VOORLOPIG**



SECTION B-B: LAPA WALL & SHARED LAPA TYPICAL SECTIONS

Project Title

0220-E GOLDEN GATE NP.

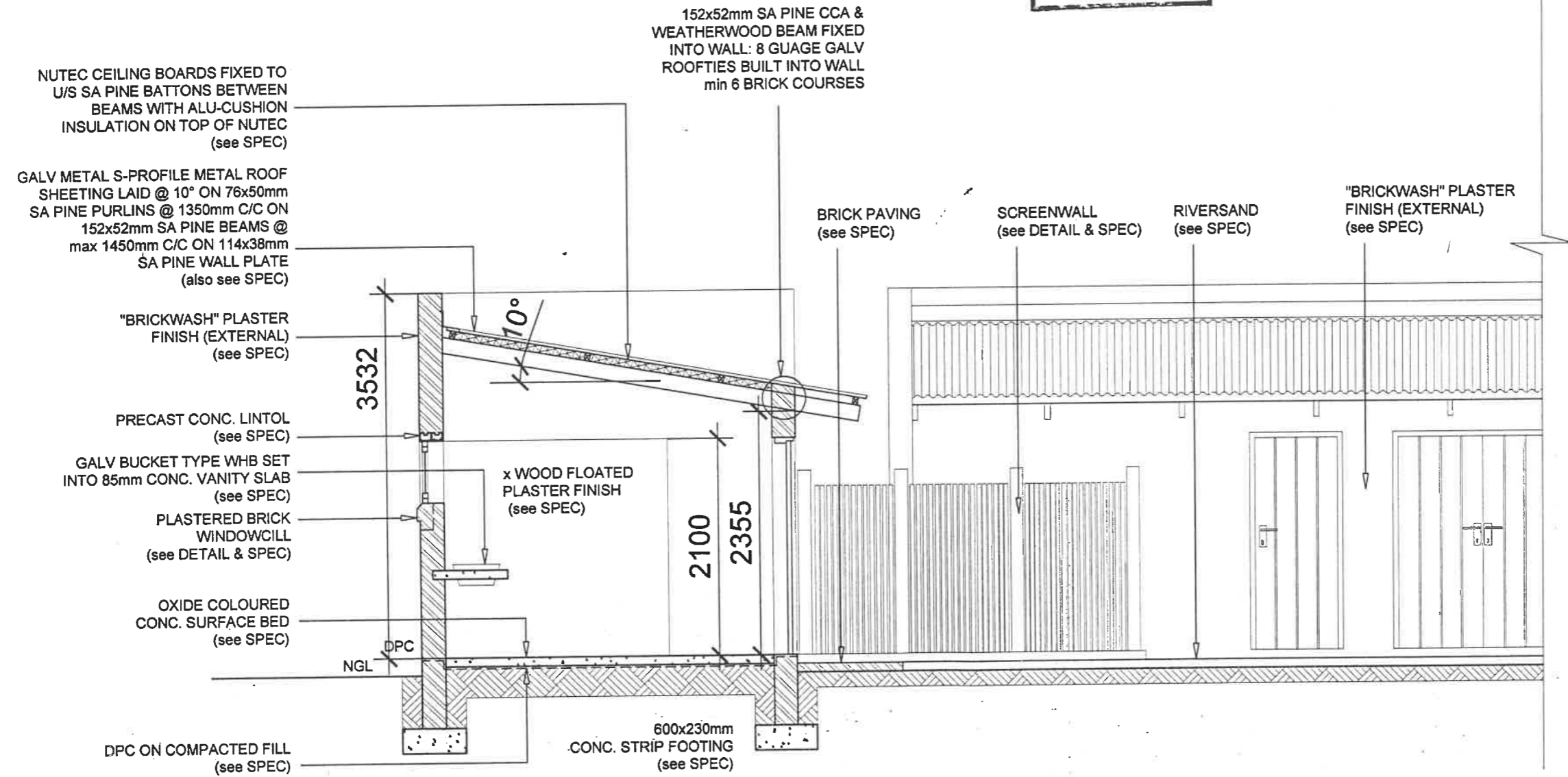


*Crafford & Crafford*

ARCHITECTS  
TEL(012) 362 3992  
7, FIRST STREET, MENLOPARK, PRETORIA, GAUTENG 0081  
E-MAIL

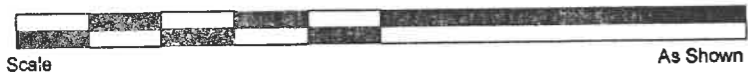
ARGITEKTE  
FAX(012) 362 9025  
admin@ccarchitects.co.za

**PROVISIONAL  
VOORLOPIG**



**SECTIONAL ELEVATION**

Project Title  
**0220-E GOLDEN GATE NP.**



*Crafford & Crafford*

ARCHITECTS  
TEL(012) 362 3992  
7, FIRST STREET, MENLO PARK, PRETORIA, GAUTENG 0081  
E-MAIL

ARGITEKTE  
FAX(012) 362 9025  
admin@ccarchitects.co.za

ALL LOCAL & NATIONAL BUILDING REGULATIONS MUST BE COMPLIED WITH. ALL DIMENSIONS TO BE CHECKED ON SITE  
THIS DRAWING TO BE USED ONLY ON ORIGINAL DESIGNATED SITE UNLESS OTHERWISE AGREED BY ARCHITECTS  
Copyright Reserved Crafford & Crafford Architects © 2002

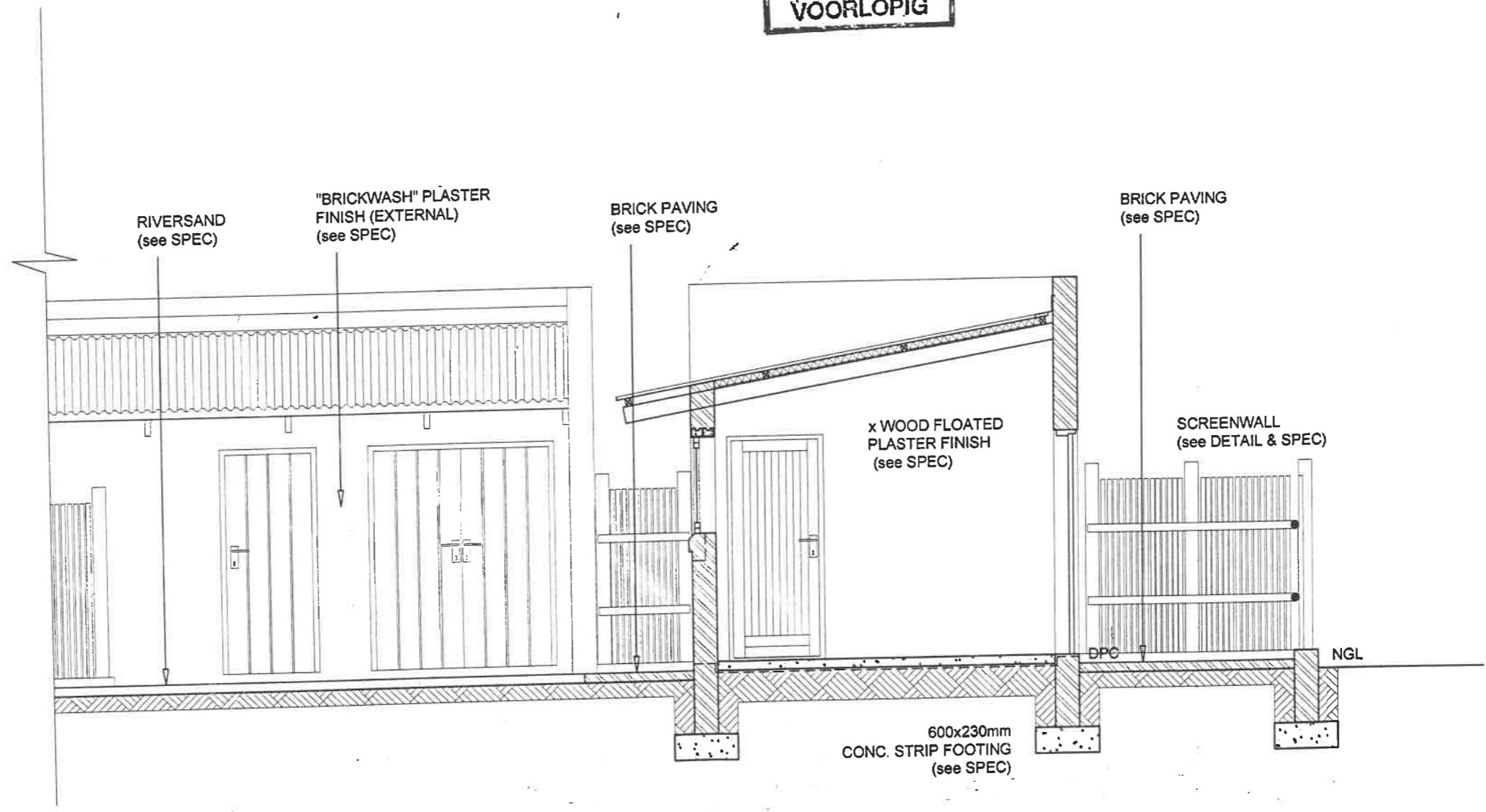
Drawing Title  
**QWAQWA STAFF QUARTERS - SECTIONAL ELEV.**

Tekening Naam

Drawn	PN	Geteken	Project	0220-D	Projek	TEK # DWG
Scale	1:50	Skaal	Date	22.09.2003	Datum	<del>302</del>

REVISION WYSIGING  
A 303

**PROVISIONAL  
VOORLOPIG**



**SECTIONAL ELEVATION**

Project Title

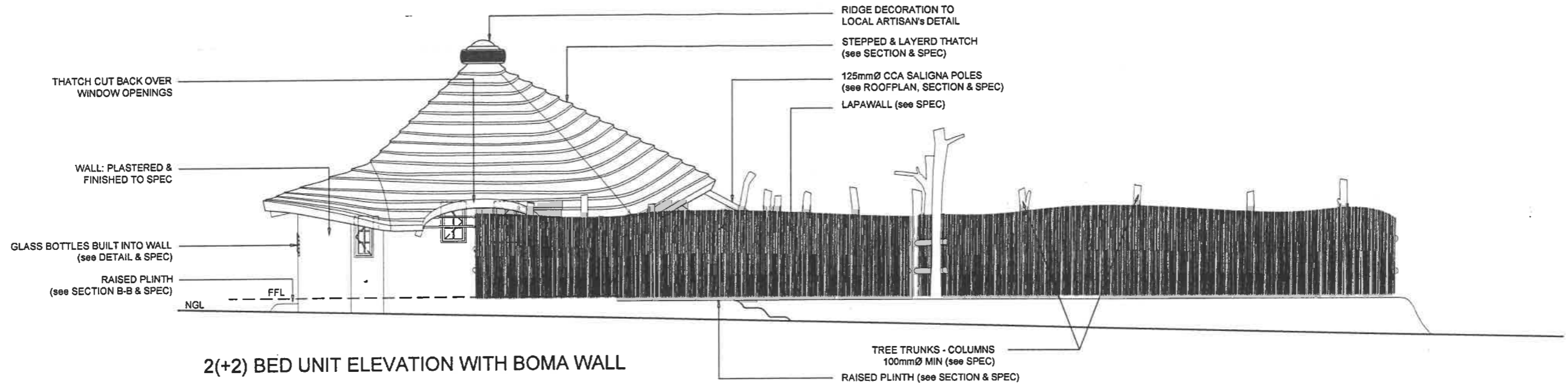
**0220-E GOLDEN GATE NP.**



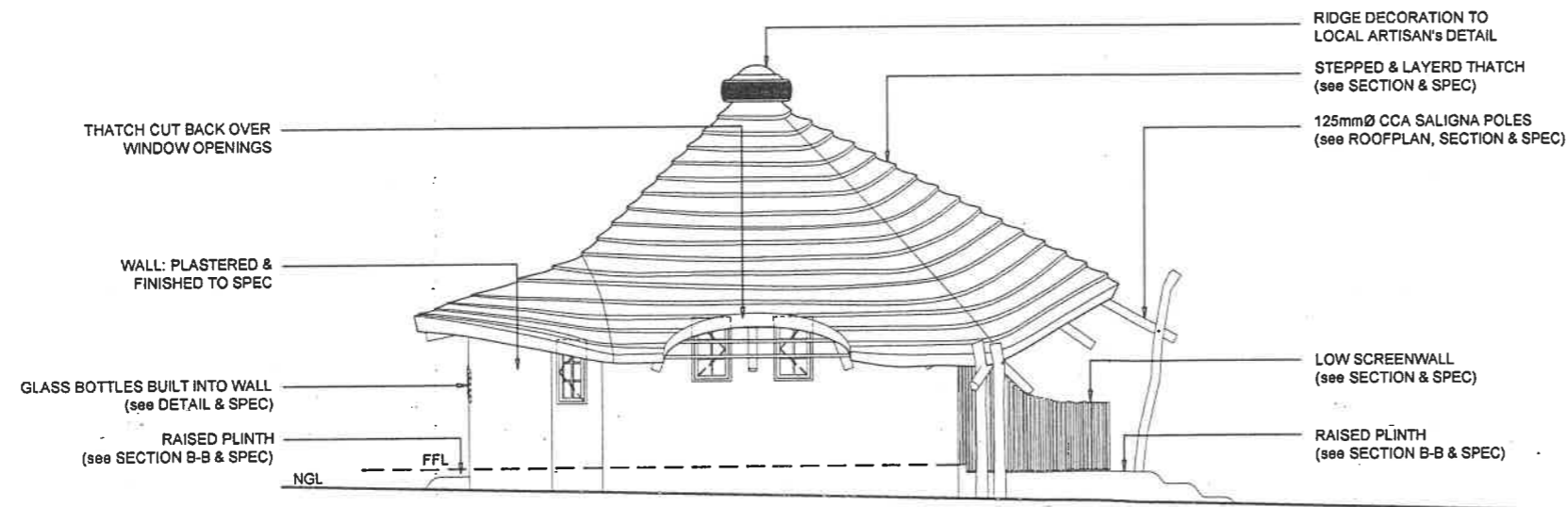
*Crafford & Crafford*

ARCHITECTS  
TEL(012) 362 3992  
7, FIRST STREET, MENLOPARK, PRETORIA, GAUTENG 0081  
E-MAIL  
admin@ccarchitects.co.za

ARGITEKTE  
FAX(012) 362 9025



**2(+2) BED UNIT ELEVATION WITH BOMA WALL**



**2(+2) BED UNIT ELEVATION**

**PROVISIONAL  
VOORLOPIG**

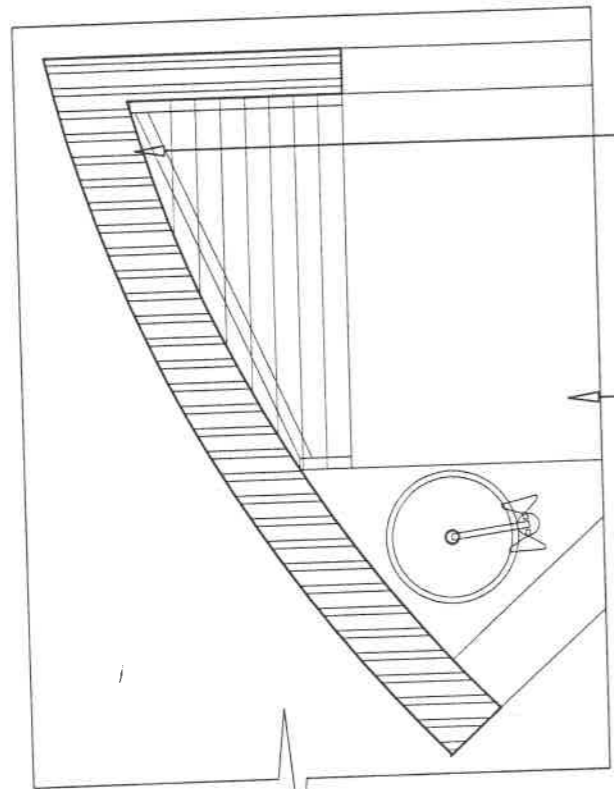
ALL LOCAL & NATIONAL BUILDING REGULATIONS MUST BE COMPLIED WITH. ALL DIMENSIONS TO BE CHECKED ON SITE  
THIS DRAWING TO BE USED ONLY ON ORIGINAL DESIGNATED SITE UNLESS OTHERWISE AGREED BY ARCHITECTS  
Copyright Reserved Crafford & Crafford Architects © 2002

Drawing Title  
**DETAILS**

Tekening Naam

Drawn	PN	Geteken	Project 0220-E	Projek	TEK # DWG
Scale	1 : 50	Skaal	Date 22.09.2003	Datum	501

A  
REVISION WYSIGING

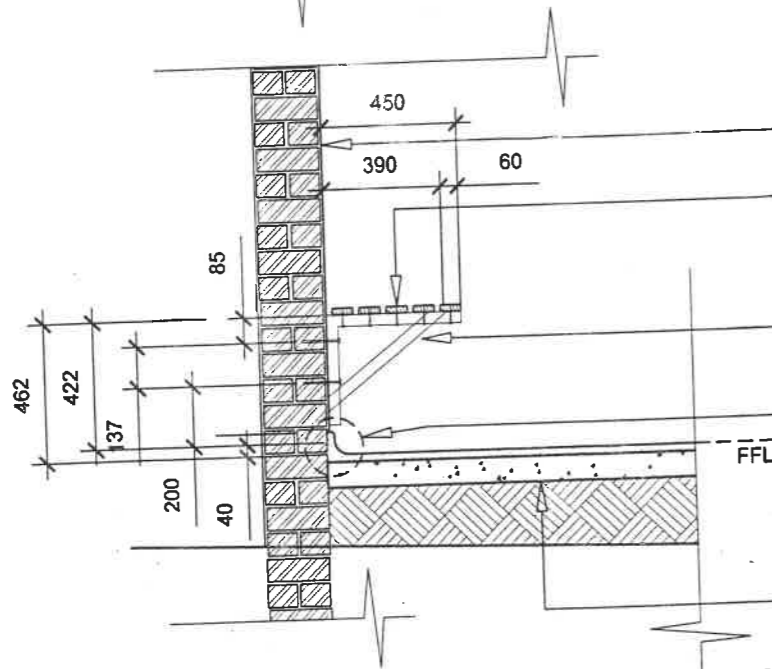


BRICK WALL (see SPEC)

38x38mm CCA SALIGNA SUPPORT  
FRAME, NAILED TOGETHER  
& FIXED INTO WALL WITH RAWLBOLTS  
(see SPEC)

**SHWR BENCH DETAIL:  
PLAN 1:25  
[2(+2) BED UNIT]**

**PROVISIONAL  
VOORLOPIG**



BRICK WALL

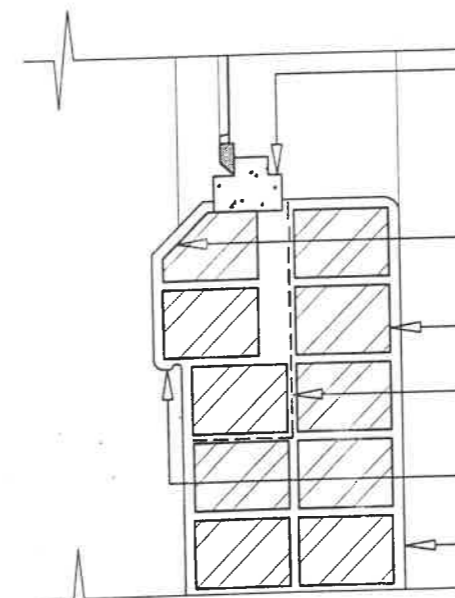
80x20mm CCA & WEATHERWOOD  
TREATED SALIGNA SLATS WITH  
ROUNDED EDGES, SCREWED TO  
FRAME WITH COUNTERSUNK SCREWS

38x38mm CCA & WEATHERWOOD  
SALIGNA SUPPORT FRAME,  
NAILED TOGETHER & FIXED  
TO WALL WITH RAWLBOLTS  
(see SPEC)

SCREED & SKIRTING CONTINUOUS.  
SKIRTING JOINT @ 75mm ABOVE FFL  
- WALL PLASTER STARTS

CONC. SURFACE BED & FILLING  
(see SECTION & SPEC)

SEAL CCA & WEATHERWOOD TREATED SALIGNA  
WITH TIMBERLIFE SATINWOOD 28 BASE, MATT, CLEAR  
(see SPEC)



BETRAMS FRAME & TIMBER  
SUBFRAME WINDOW

approx 55mm CHAMFER IN  
BRICKWORK & PLASTER FINISH

STD CLAY BRICKS (see SPEC)

DPC PROVIDED UNDERNEATH FRAME

PROVIDE DRIP IN PLASTER

WALL FINISH TO SPEC

**TYPICAL WINDOW CILL DETAIL 1:25**

**TYPICAL SHWR BENCH & SKIRTING DETAIL  
SCALE 1:25**

Project Title

**0220-E GOLDEN GATE NP.**



As Shown

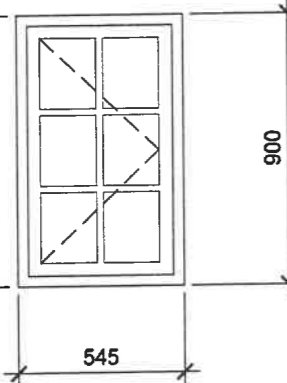
**ARCHITECTS**  
TEL(012) 362 3992

**ARGITEKTE**  
FAX(012) 362 9025

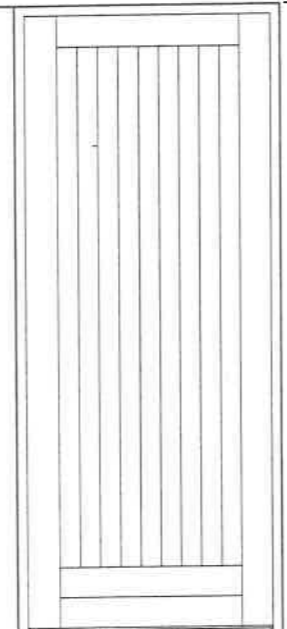
7, FIRST STREET, MENLOPARK, PRETORIA, GAUTENG 0081  
E-MAIL admin@ccarchitects.co.za



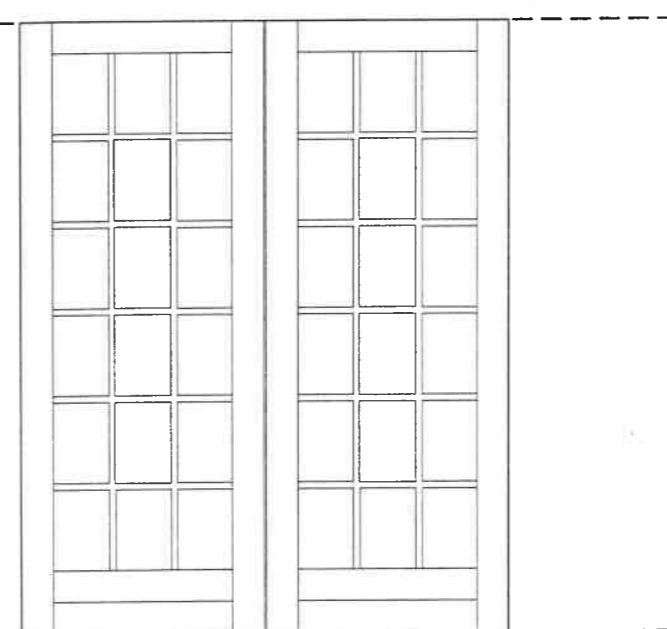
2(+2) bed unit (x18)

<b>WINDOW ONE</b> <b>QUANTITY - 6</b> (W1)

<b>DESCRIPTION:</b> Std Swartland "Status", code SC1SPL/R, to be installed as per manufacturer's spec. Size: 545x900mm
<b>FINISH:</b> Sand & finish with 2 coats Timberlife Satinwood 28 base (see SPEC)
<b>GLAZING/IRONMONGERY:</b> GLAZING: 4mm clear float glass installed as per SABS 0400, PART N & SABS 0137 IRONMONGERY: supplied with window (see SPEC)

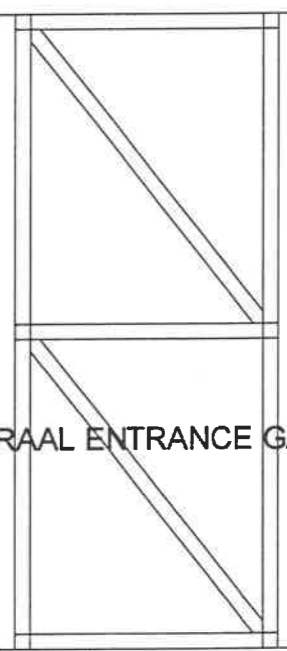
2(+2) bed unit (x18)

<b>DOOR ONE:</b> <b>QUANTITY - 1</b> (D1)

<b>DESCRIPTION:</b> Std Swartland "Status" code D7, installed to manufac.'s spec. - 813x2032mm (90x55mm frame)
<b>FINISH:</b> Sand & finish frame with 2 coats Timberlife Satinwood 28 base
<b>IRONMONGERY:</b> HANDLE: UNION - Solid brass BACKPLATE, INDICATOR BOLT HINGES: UNION - Solid brass 100mm HINGES (see SPEC)

**DOOR TWO:**  
**QUANTITY - 1**     (D2)


<b>DESCRIPTION:</b> Std Swartland "Status" code D4-1612, installed to manufac.'s spec. - 1612x2032mm (90x55mm frame), 6mm safety glass (see SPEC)
<b>FINISH:</b> Sand & finish frame with 2 coats Timberlife Satinwood 28 base
<b>IRONMONGERY:</b> HANDLE: UNION - Solid brass BACKPLATE LOCK: UNION - CILINDER ON MASTERKEY SYSTEM HINGES: UNION - Solid brass 100mm HINGES (see SPEC)

**DOOR THREE:**  
**x1 per KRAAL**     (D3)


<b>DESCRIPTION:</b> Purpose made MS gate: 813x2032mm, 50x75mm MS hollow section frame with 20-40mm Ø CCA treated laths fixed screwed to frame
<b>FINISH:</b> To be clean, dry & dust free; painted with one coat MERIT universal undercoat (UC1) & 2 coats PLASCON VELVAGLO
<b>IRONMONGERY:</b> LOCK: provide GALV 200mm padbolt & padlock HINGES: UNION - GALV MS heavy butt hinge 100mm, "Parliament" type (see SPEC)

PROVISIONAL  
VOORLOPIG

4(+2) bed unit (x17)

<b>WINDOW ONE</b> <b>QUANTITY - 8</b> (W1)
<b>DESCRIPTION:</b> Std Swartland "Status", code SC1SPL/R, to be installed as per manufacturer's spec. Size: 545x900mm
<b>FINISH:</b> Sand & finish with 2 coats Timberlife Satinwood 28 base (see SPEC)
<b>GLAZING/IRONMONGERY:</b> GLAZING: 4mm clear float glass installed as per SABS 0400, PART N & SABS 0137 IRONMONGERY: supplied with window (see SPEC)

4(+2) bed unit (x17)

<b>DOOR ONE:</b> <b>QUANTITY - 2</b> (D1)
<b>DESCRIPTION:</b> Std Swartland "Status" code D7, installed to manufac.'s spec. - 813x2032mm (90x55mm frame)
<b>FINISH:</b> Sand & finish frame with 2 coats Timberlife Satinwood 28 base
<b>IRONMONGERY:</b> HANDLE: UNION - Solid brass BACKPLATE, INDICATOR BOLT HINGES: UNION - Solid brass 100mm HINGES (see SPEC)

**DOOR TWO:**  
**QUANTITY - 1** (D2)

<b>DESCRIPTION:</b> Std Swartland "Status" code D4-1612, installed to manufac.'s spec. - 1612x2032mm (90x55mm frame), 6mm safety glass (see SPEC)
<b>FINISH:</b> Sand & finish frame with 2 coats Timberlife Satinwood 28 base
<b>IRONMONGERY:</b> HANDLE: UNION - Solid brass BACKPLATE LOCK: UNION - CILINDER ON MASTERKEY SYSTEM HINGES: UNION - Solid brass 100mm HINGES (see SPEC)

**DOOR THREE:**  
**x1 per KRAAL** (D3)

<b>DESCRIPTION:</b> Purpose madde MS gate: 813x2032mm, 50x75mm MS hollow section frame with 20-40mm Ø CCA treated laths fixed screwed to frame
<b>FINISH:</b> To be clean, dry & dust free; painted with one coat MERIT universal undercoat (UC1) & 2 coats PLASCON VELVAGLO
<b>IRONMONGERY:</b> LOCK: provide GALV 200mm padbolt & padlock HINGES: UNION - GALV MS heavy butt hinge 100mm, "Parliment" type (see SPEC)

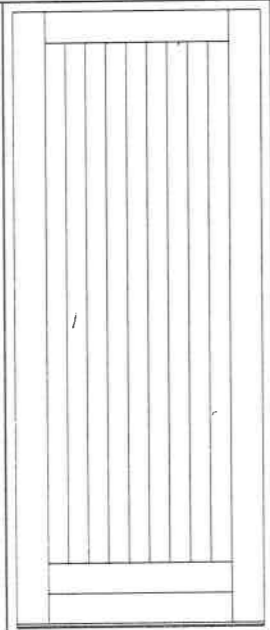
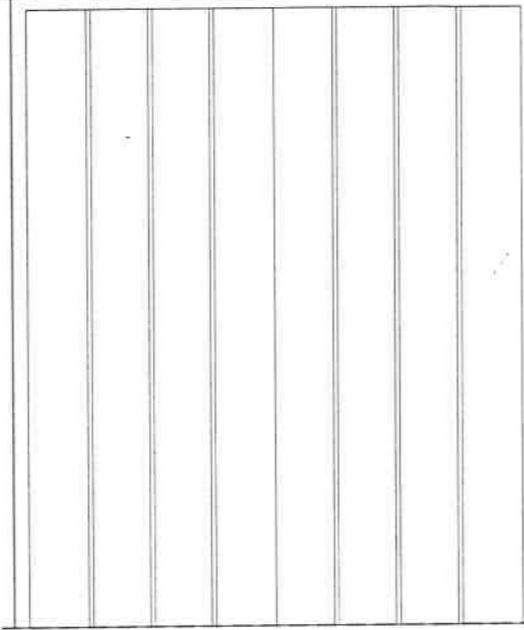
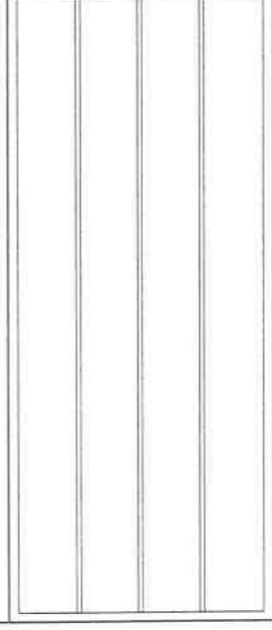
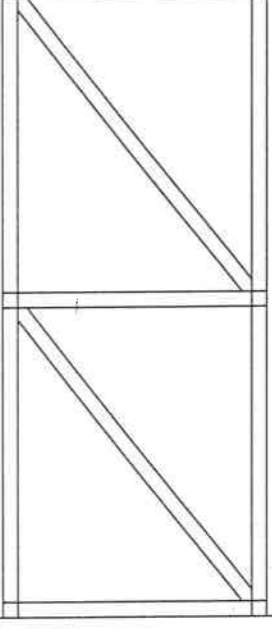
PROVISIONAL VOORLOPIG

WINDOW SCHEDULE - STAFF UNIT

WINDOW ONE QUANTITY - 14 (W1)	WINDOW TWO QUANTITY - 10 (W2)
<p>DESCRIPTION:                  Std Swartland "Status", code SC1SPL/R, to be installed as per manufacturer's spec. Size: 545x900mm</p>	<p>DESCRIPTION:                  Std Swartland "Status", code SC 1FSP, to be installed as per manufacturer's spec. Size: 545x900mm</p>
<p>FINISH:                  Sand &amp; finish with 2 coats Timberlife Satinwood 28 base (see SPEC)</p>	<p>FINISH:                  Sand &amp; finish with 2 coats Timberlife Satinwood 28 base (see SPEC)</p>
<p>GLAZING/IRONMONGERY:                  GLAZING: 4mm clear float glass installed as per SABS 0400, PART N &amp; SABS 0137                  IRONMONGERY: supplied with window (see SPEC)</p>	<p>GLAZING/IRONMONGERY:                  GLAZING: 4mm clear float glass installed as per SABS 0400, PART N &amp; SABS 0137                  IRONMONGERY: supplied with window (see SPEC)</p>

**PROVISIONAL  
 VOORLOPIG**

## DOOR SCHEDULE - STAFF UNIT

DOOR ONE: QUANTITY - 9      (D1)	DOOR THREE: QUANTITY - 1      (D3)	DOOR FOUR: QUANTITY - 2      (D4)	DOOR FIVE: QUANTITY - 1      (D5)
USL  UFFL	USL  UFFL	USL  UFFL	USL  UFFL
<p><b>DESCRIPTION:</b> Std Swartland "Status" code D7, installed to manufac.'s spec. - 813x2032mm (90x55mm frame)</p> <p><b>FINISH:</b> Sand &amp; finish frame with 2 coats Timberlife Satinwood 28 base</p> <p><b>IRONMONGERY:</b> HANDLE: UNION - Solid brass BACKPLATE, INDICATOR BOLT HINGES: UNION - Solid brass 100mm HINGES (see SPEC)</p>	<p><b>DESCRIPTION:</b> STD MS FLUTED door 1719x2100mm in MS frame to fit door</p> <p><b>FINISH:</b> To be clean, dry &amp; dust free; painted with one coat MERIT universal undercoat (UC1) &amp; 2 coats PLASCON VELVAGLO</p> <p><b>IRONMONGERY:</b> HANDLE: UNION - Solid brass on 152mm BACKPLATE LOCK: UNION - CILINDER ON MASTERKEY SYSTEM HINGES: UNION - Solid brass 100mm HINGES (see SPEC)</p>	<p><b>DESCRIPTION:</b> STD MS FLUTED door 813x2032mm in MS FRAME to fit door</p> <p><b>FINISH:</b> To be clean, dry &amp; dust free; painted with one coat MERIT universal undercoat (UC1) &amp; 2 coats PLASCON VELVAGLO</p> <p><b>IRONMONGERY:</b> HANDLE: UNION - Solid brass on 152mm BACKPLATE LOCK: UNION - CILINDER ON MASTERKEY SYSTEM HINGES: UNION - Solid brass 100mm HINGES (see SPEC)</p>	<p><b>DESCRIPTION:</b> PURPOSE MADE MS GATE: 50x50mm MS hollow section frame with 20-40mm Ø CCA treated laths fixed screwed to frame</p> <p><b>FINISH:</b> To be clean, dry &amp; dust free; painted with one coat MERIT universal undercoat (UC1) &amp; 2 coats PLASCON VELVAGLO</p> <p><b>IRONMONGERY:</b> LOCK: provide GALV 200mm padbolt &amp; padlock HINGES: UNION - GALV MS heavy butt hinge 100mm, "Parliment" type (see SPEC)</p>

**PROVISIONAL  
VOORLOPIG**

Project Title

**0220-E GOLDEN GATE NP**



*Crafford & Crafford*

ARCHITECTS  
TEL(012) 362 3992  
7, FIRST STREET, MENLOPARK, PRETORIA, GAUTENG 0081  
E-MAIL

ARGITEKTE  
FAX(012) 362 9025  
admin@ccarchitects.co.za