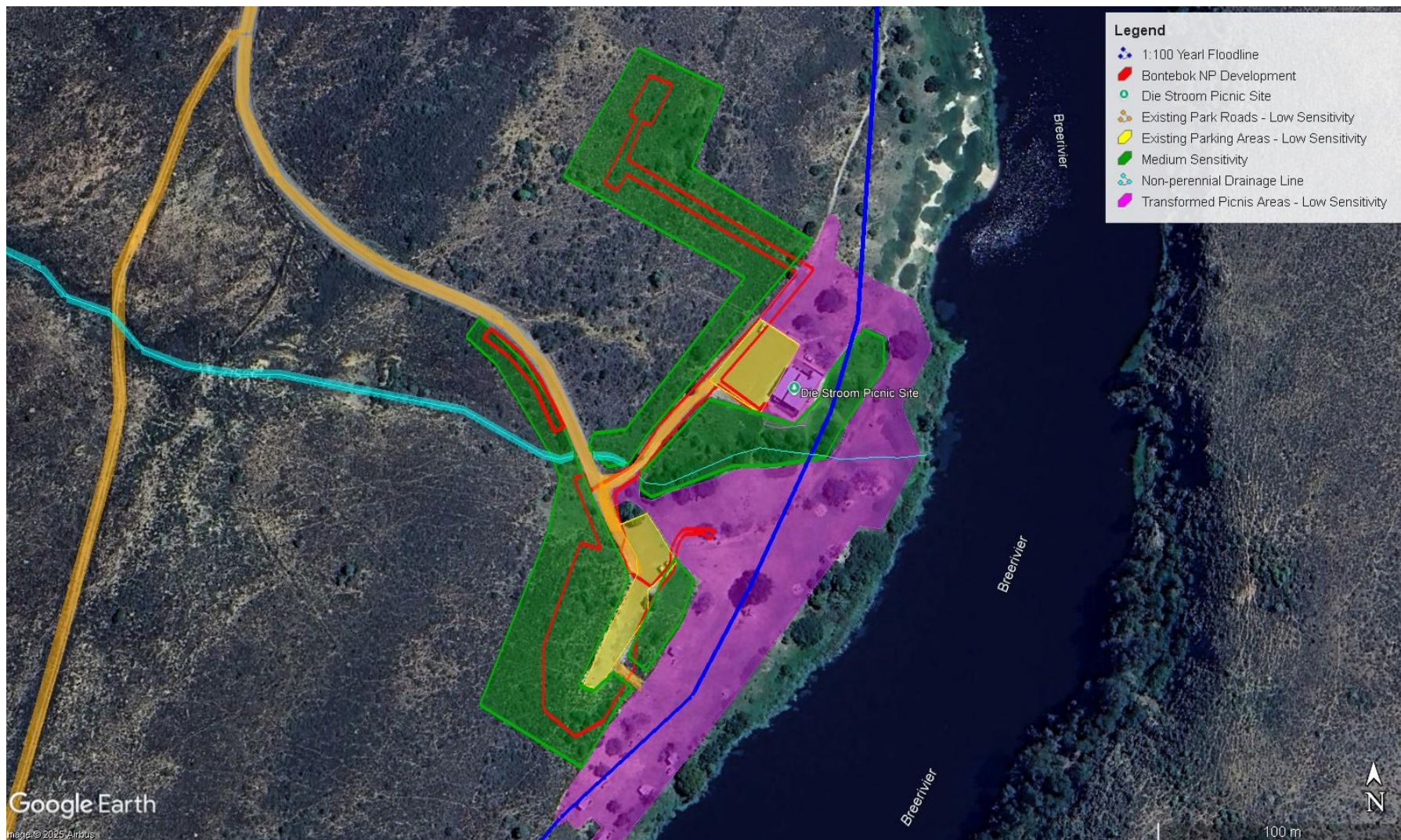


APPENDIX B2: ENVIRONMENTAL SENSITIVITIES MAP



Map 5: Environment sensitivities map. Map Key:

- **Red outline** indicates the boundaries of the proposed development areas. All undeveloped areas falling outside of the proposed development area is to be treated as No-Go areas. Construction laydown and stockpiling areas are to be restricted to the existing transformed parking areas.
- **Dark green** represents the Medium Sensitivity Areas as surveyed on and within a $\pm 10\text{m}$ radius of the proposed development area.
- **Orange** represents the Low Sensitivity Existing Park Roads.
- **Yellow** represents the Low Sensitivity Existing Parking Areas.
- **Purple** represents the Low Sensitivity Transformed Picnic Areas.