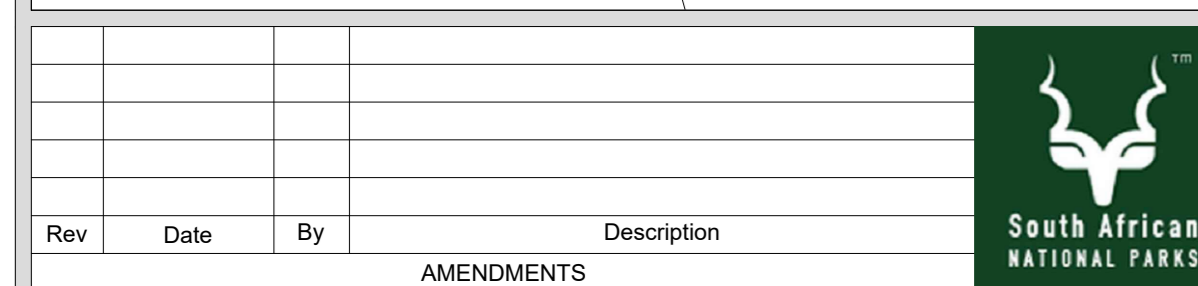
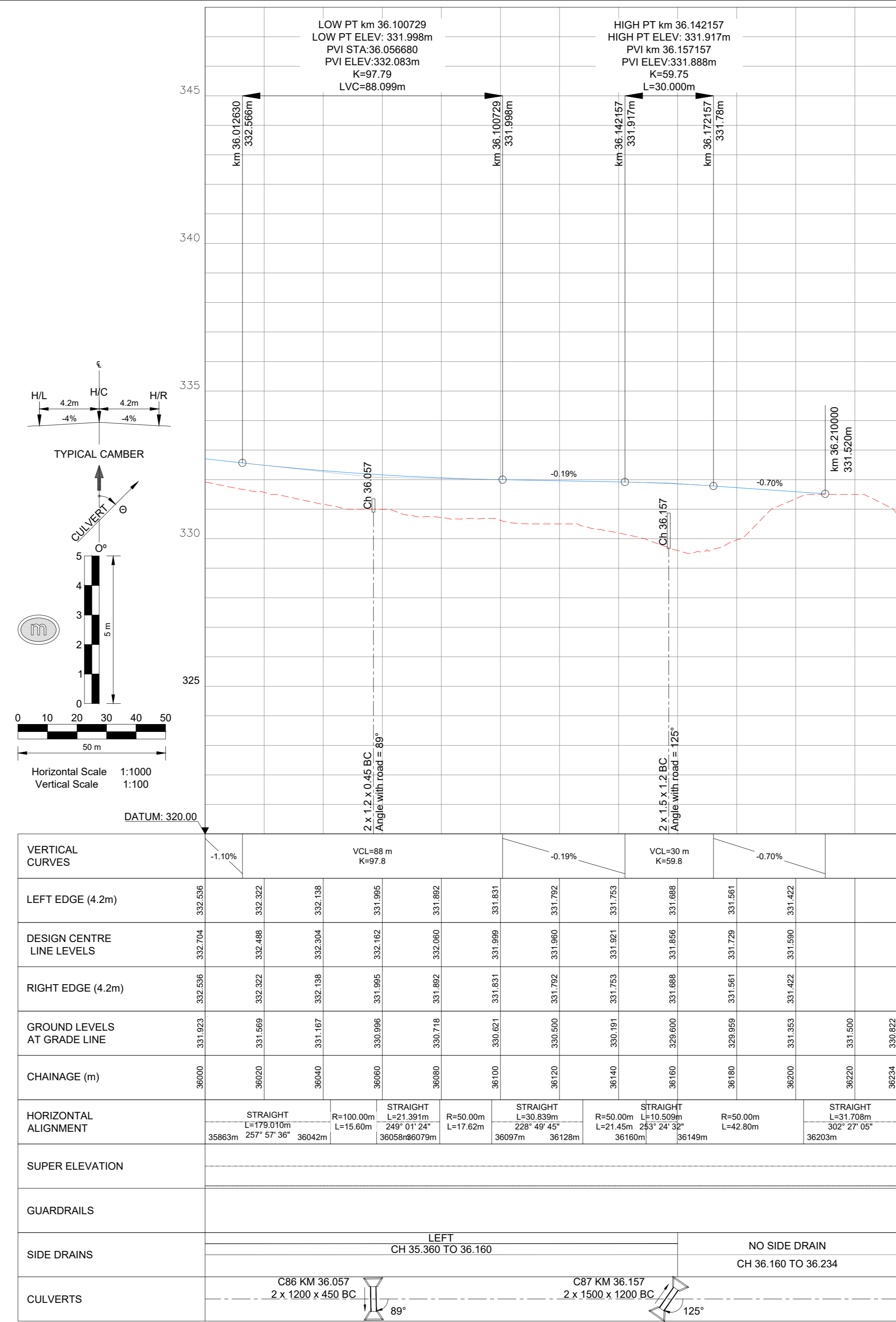
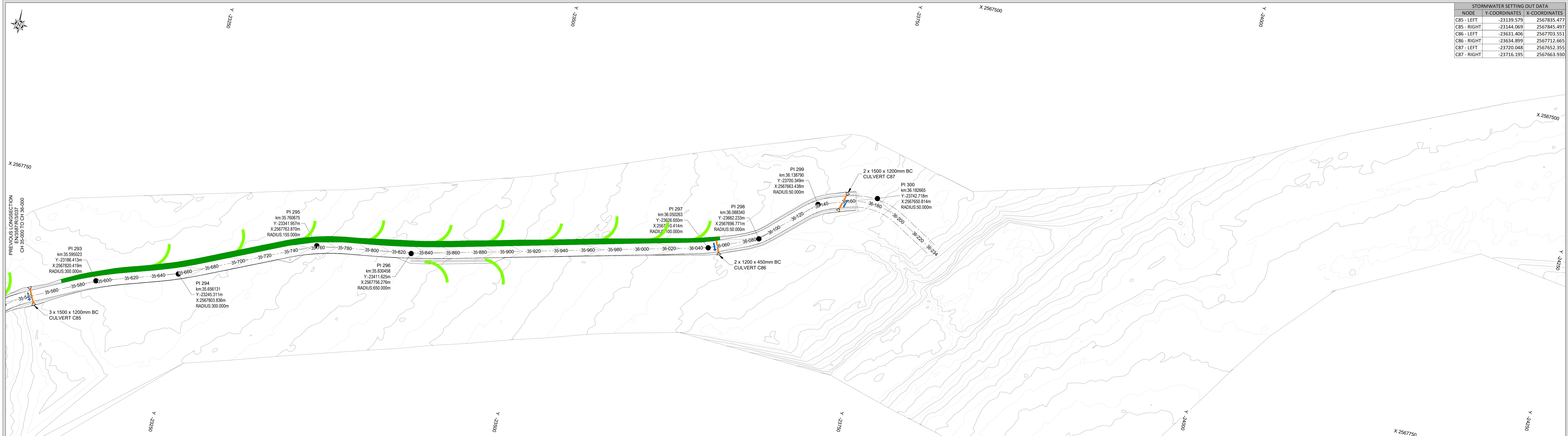


STORMWATER SETTING OUT DATA		
NODE	Y-COORDINATES	X-COORDINATES
C85 - LEFT	-23139.579	2567835.477
C85 - RIGHT	-23144.069	2567845.497
C86 - LEFT	-23631.406	2567703.551
C86 - RIGHT	-23634.899	2567712.665
C87 - LEFT	-23720.048	2567652.355
C87 - RIGHT	-23716.195	2567663.930



TECHNICAL SERVICES DEPARTMENT
KRUGER NATIONAL PARK
DRAWING OFFICE (DNP)
Tel: (013) 735 3448

DESIGNED BY		APPROVED BY		SERVICE		PROJECT		TITLE	
DESIGNED BY	A.J. NEL	APPROVED BY		SERVICE	ROADS	PROJECT	SHANGONI ROAD PH 1	TITLE	ROADS - LONGSECTION: CH-36+000 TO CH-36+234
CHECKED BY	C.J. SMIT	SEN. MAN. CIVIL & BUILDING		MAN. PLANNING & DESIGN		CLIENT		DATE	
DRAWN BY	J. VAN DYK	SEN. MAN. ELECTRO & MECHANICAL		SEN. MAN. ROADS & MAINTENANCE				DATE	
CHECKED BY	C.J. SMIT	SEN. MAN. ROADS & MAINTENANCE		MAN. PLANNING & DESIGN				DATE	

FOR TENDER PURPOSES

DATE: APRIL 2024
SCALE: 1:1000
CAD FILE NAME: EN3587R3-038.dwg
PAPER SIZE: A0

CONSULTANT DWG. NO.: EN3587R/3/038
CLIENT DWG. NO.: P09/R/3/038

(REF FOLDER: X:\02 PROJECTS\3000\3500 - 3599\N3587EN - SHANGONI ROAD KNP1 DESIGN PHASE\TENDER\ROADS\EN3587R3001-038.DWG)