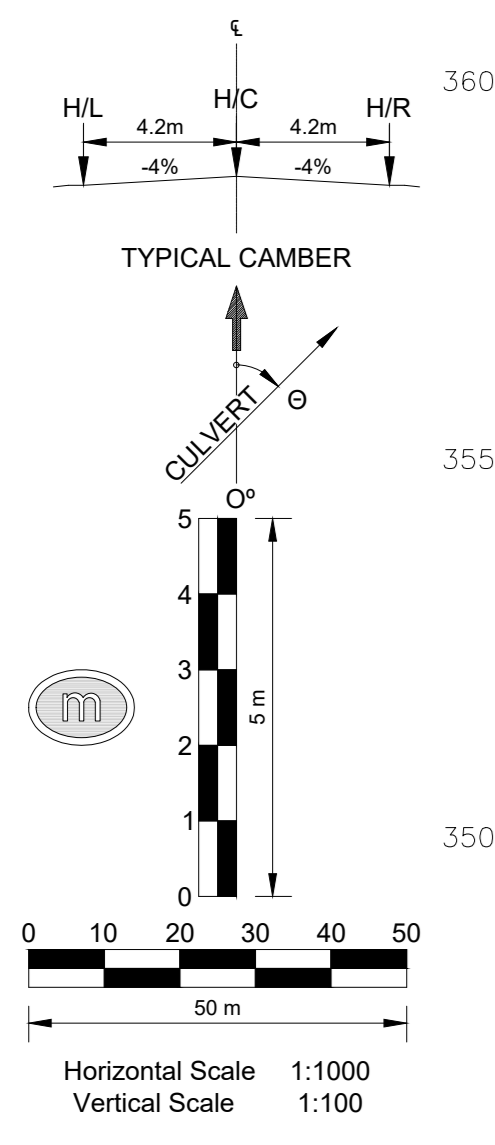
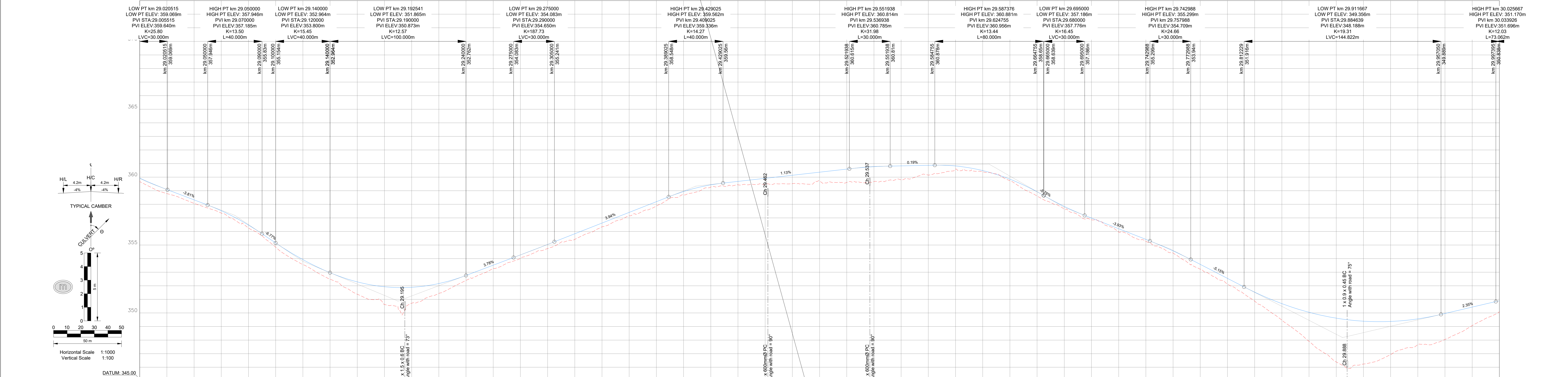


STORMWATER SETTING OUT DATA

| NODE | Y-COORDINATES | X-COORDINATES |
|-------------|---------------|---------------|
| C61 - LEFT | -17792.207 | 2566588.199 |
| C61 - RIGHT | -17785.984 | 2566598.693 |
| C62 - LEFT | -17977.395 | 2566782.721 |
| C62 - RIGHT | -17970.228 | 2566789.695 |
| C63 - LEFT | -18029.575 | 2566835.229 |
| C63 - RIGHT | -18022.575 | 2566843.371 |
| C64 - LEFT | -18287.674 | 2567042.966 |
| C64 - RIGHT | -18292.569 | 2567059.330 |



| VERTICAL CURVES | VCL=30 m K=25.6 | -3.81% | VCL=40 m K=13.5 | 4.77% | VCL=40 m K=15.5 | Vertical | VCL=100 m K=12.6 | 3.78% | VCL=30 m K=18.7 | 3.94% | VCL=40 m K=14.3 | 1.13% | VCL=30 m K=32.0 | 0.19% | VCL=60 m K=13.4 | 5.70% | VCL=30 m K=16.4 | -3.80% | VCL=30 m K=24.7 | -4.10% | VCL=145 m K=19.3 | 2.35% | VCL=73 m K=12.0 | | | | | | | | |
|-----------------------------|-------------------------------------------|---------------------------------------|--------------------|------------------------|--------------------|----------|---------------------------------------|--------|-----------------------|--------|----------------------------------------|--------|--------------------------------------|---------------------------------------|--------------------|-----------------------|---------------------------------------|--------|--------------------------------------|--------|---------------------------------------|--------|----------------------|--------|------------------------------------------|--------|-----------------------|--------|---------------------------------------|--------|-----------------------|
| LEFT EDGE (4.2m) | 350.99 | 350.99 | 350.99 | 350.99 | 350.99 | 350.99 | 350.99 | 350.99 | 350.99 | 350.99 | 350.99 | 350.99 | 350.99 | 350.99 | 350.99 | 350.99 | 350.99 | 350.99 | 350.99 | 350.99 | 350.99 | 350.99 | 350.99 | | | | | | | | |
| DESIGN CENTRE LINE LEVELS | 350.99 | 350.99 | 350.99 | 350.99 | 350.99 | 350.99 | 350.99 | 350.99 | 350.99 | 350.99 | 350.99 | 350.99 | 350.99 | 350.99 | 350.99 | 350.99 | 350.99 | 350.99 | 350.99 | 350.99 | 350.99 | 350.99 | 350.99 | | | | | | | | |
| RIGHT EDGE (4.2m) | 350.99 | 350.99 | 350.99 | 350.99 | 350.99 | 350.99 | 350.99 | 350.99 | 350.99 | 350.99 | 350.99 | 350.99 | 350.99 | 350.99 | 350.99 | 350.99 | 350.99 | 350.99 | 350.99 | 350.99 | 350.99 | 350.99 | 350.99 | | | | | | | | |
| GROUND LEVELS AT GRADE LINE | 350.99 | 350.99 | 350.99 | 350.99 | 350.99 | 350.99 | 350.99 | 350.99 | 350.99 | 350.99 | 350.99 | 350.99 | 350.99 | 350.99 | 350.99 | 350.99 | 350.99 | 350.99 | 350.99 | 350.99 | 350.99 | 350.99 | 350.99 | | | | | | | | |
| CHAINAGE (m) | 29000 | 29000 | 29000 | 29000 | 29000 | 29000 | 29000 | 29000 | 29000 | 29000 | 29000 | 29000 | 29000 | 29000 | 29000 | 29000 | 29000 | 29000 | 29000 | 29000 | 29000 | 29000 | 29000 | | | | | | | | |
| HORIZONTAL ALIGNMENT | R=235.00m L=133.00m | STRAIGHT L=88.401m 310° 49' 58" | 29015m | R=350.00m L=108.83m | 29044m | 29103m | STRAIGHT L=53.212m 317° 38' 01" | 29046m | R=700.00m L=22.49m | 29068m | STRAIGHT L=244.576m 310° 47' 34" | 29133m | R=700.00m L=16.73m | STRAIGHT L=33.070m 314° 25' 24" | 29133m | R=700.00m L=31.90m | STRAIGHT L=53.206m 311° 48' 44" | 29648m | R=235.00m L=36.67m | 29665m | STRAIGHT L=97.225m 307° 42' 09" | 29762m | R=65.00m L=47.41m | 29860m | STRAIGHT L=33.380m 289° 02' 10" | 29860m | R=135.00m L=56.98m | 29903m | STRAIGHT L=38.000m 310° 14' 29" | 29999m | R=150.00m L=53.38m |
| SUPER ELEVATION | | | | | | | | | | | | | | | | | | | | | | | | | | | | | | | |
| GUARDRAILS | | | | | | | | | | | | | | | | | | | | | | | | | | | | | | | |
| SIDE DRAINS | BOTH SIDES CH 29.000 TO 29.200 | | | | | | | | | | | | | | | | | | | | | | | | | | | | | | |
| CULVERTS | C61 KM 29.195 2 x 1500 x 600 BC 73° | | | | | | | | | | | | C62 KM 29.462 1 x 600mm PC 90° | | | | | | C63 KM 29.537 1 x 600mm PC 90° | | | | | | C64 KM 29.888 1 x 900 x 450 BC 75° | | | | | | |

TECHNICAL SERVICES DEPARTMENT
KRUGER NATIONAL PARK
DRAWING OFFICE (DNP)
Tel: (013) 735 3448

DESIGNED BY: A.J. NEL
CHECKED BY: C.J. SMIT
DRAWN BY: J. VAN DYK
CHECKED BY: C.J. SMIT

APPROVED BY

SEN. MAN. CIVIL & BUILDING
SEN. MAN. ELECTRO & MECHANICAL
SEN. MAN. ROADS & MAINTENANCE
MAN. PLANNING & DESIGN

SERVICE: ROADS
PROJECT: SHANGONI ROAD PH 1
TITLE: ROADS - LONGSECTION: CH-29.000 TO CH-30.000

DATE: APRIL 2024
SCALE: 1:1000
CAD FILE NAME: EN3587R301-038.dwg
PAPER SIZE: A0

CONSULTANT DWG. NO.: EN/3587/R/3/031
CLIENT DWG. NO.: P09/R/3/031

FOR TENDER PURPOSES