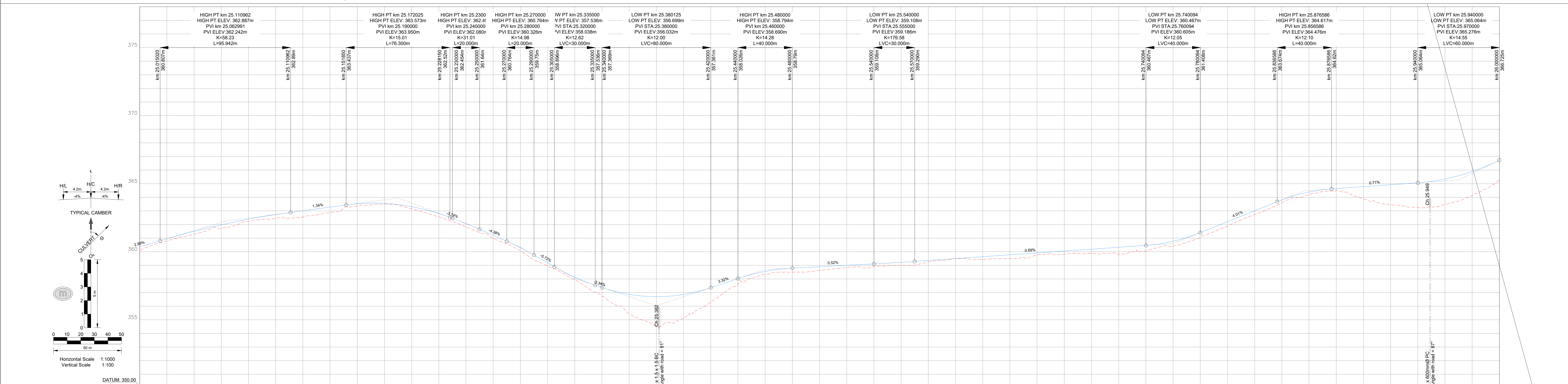


STORMWATER SETTING OUT DATA			
NODE	Y-COORDINATES	X-COORDINATES	
CS2 - LEFT	-14576.131	2563987.503	
CS2 - RIGHT	-14570.895	2563995.745	
CS3 - LEFT	-14945.541	2564251.423	
CS3 - RIGHT	-14938.225	2564259.611	
CS4 - LEFT	-15412.746	2564569.857	
CS4 - RIGHT	-15404.011	2564577.791	



VERTICAL CURVES	2.66%	VCL=96m K=58.2	1.34%	VCL=76m K=15.0	-3.74% VCL=20m K=31.0	-4.38%	VCL=20m K=15.0	-6.72%	VCL=30m K=12.6	-3.34%	3.32%	VCL=40m K=14.3	0.62%	VCL=30m K=17.6	0.69%	VCL=40m K=12.1	4.01%	VCL=40m K=12.1	0.71%	VCL=60m K=14.5	4.83%					
LEFT EDGE (4.2m)	360.115	360.195	360.350	360.595	360.935	361.345	361.815	362.345	362.935	363.585	364.295	365.065	365.895	366.785	367.725	368.715	369.755	370.845	371.985	373.175	374.415					
DESIGN CENTRE LINE LEVELS	360.115	360.195	360.350	360.595	360.935	361.345	361.815	362.345	362.935	363.585	364.295	365.065	365.895	366.785	367.725	368.715	369.755	370.845	371.985	373.175	374.415					
RIGHT EDGE (4.2m)	360.115	360.195	360.350	360.595	360.935	361.345	361.815	362.345	362.935	363.585	364.295	365.065	365.895	366.785	367.725	368.715	369.755	370.845	371.985	373.175	374.415					
GROUND LEVELS AT GRADE LINE	360.115	360.195	360.350	360.595	360.935	361.345	361.815	362.345	362.935	363.585	364.295	365.065	365.895	366.785	367.725	368.715	369.755	370.845	371.985	373.175	374.415					
CHAINAGE (m)	25000	25096	25192	25288	25384	25480	25576	25672	25768	25864	25960	26056	26152	26248	26344	26440	26536	26632	26728	26824	26920					
HORIZONTAL ALIGNMENT	STRAIGHT L=40.00m 24968m 25031m		STRAIGHT R=400.00m L=19.18m		STRAIGHT L=38.528m 25056m 25069m 33' 44" 25069m		STRAIGHT R=450.00m L=186.38m		STRAIGHT L=37.650m 31° 59' 28"		STRAIGHT R=250.00m L=35.41m		STRAIGHT L=42.428m 25387m 311' 47' 17" 25420m		STRAIGHT R=700.00m L=10.85m		STRAIGHT L=70.035m 304' 21' 07"		STRAIGHT R=450.00m L=27.27m		STRAIGHT L=75.187m 297' 43' 09"		STRAIGHT R=240.00m L=125.91m		STRAIGHT L=11.130m 327' 46' 40"	
SUPER ELEVATION																										
GUARDRAILS																										
SIDE DRAINS	LEFT CH 24.740 TO 25.200										BOTH SIDES CH 25.200 TO 25.390					NO SIDE DRAIN CH 25.390 TO 25.500					LEFT CH 25.500 TO 26.360					
CULVERTS	<div style="display: flex; justify-content: space-between;"> <div>CS3 KM 25.382 1 x 1500 x 1500 BC</div> <div>CS4 KM 25.948 1 x 600mmØ PC</div> </div>																									

Rev	Date	By	Description



DESIGNED BY	A. J. NEL
CHECKED BY	C. J. SMIT
DRAWN BY	J. VAN DYK
CHECKED BY	C. J. SMIT

APPROVED BY				
SEN. MAN. CIVIL & BUILDING	SEN. MAN. ELECTRO & MECHANICAL	SEN. MAN. ROADS & MAINTENANCE	MAN. PLANNING & DESIGN	CLIENT
DATE:	DATE:	DATE:	DATE:	DATE:

SERVICE: **ROADS**
FOR TENDER PURPOSES

PROJECT: **SHANGONI ROAD PH 1**

TITLE: **ROADS - LONGSECTION: CH-25+000 TO CH-26+000**

DATE: **APRIL 2024**
SCALE: **1:1000**

CAD FILE NAME: **EN3587R/3-038.dwg**
PAPER SIZE: **A0**
CONSULTANT DWG. NO.: **EN3587R/3/027**
CLIENT DWG. NO.: **P09/R/3/027**

(REF FOLDER: X:\02\PROJECTS\3000\3500 - 3599\3587EN - SHANGONI ROAD KNP1 DESIGN PHASE7\DRAWINGS\TENDER\ROADS\EN3587R301-038.DWG)