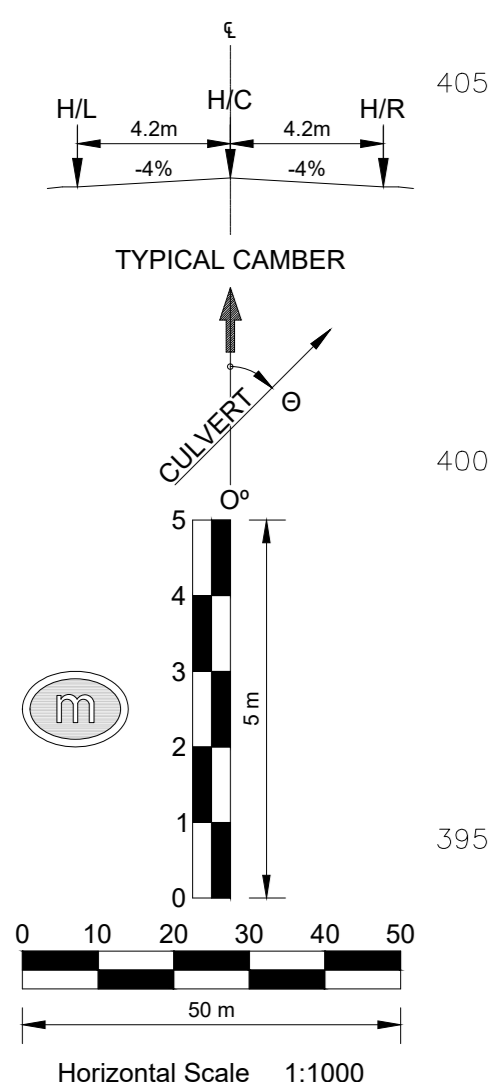
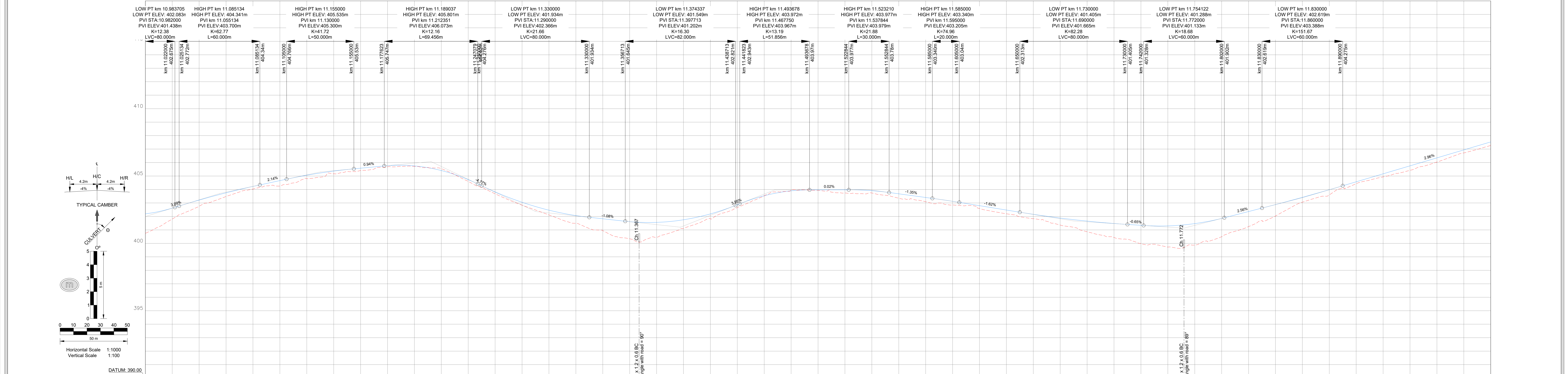
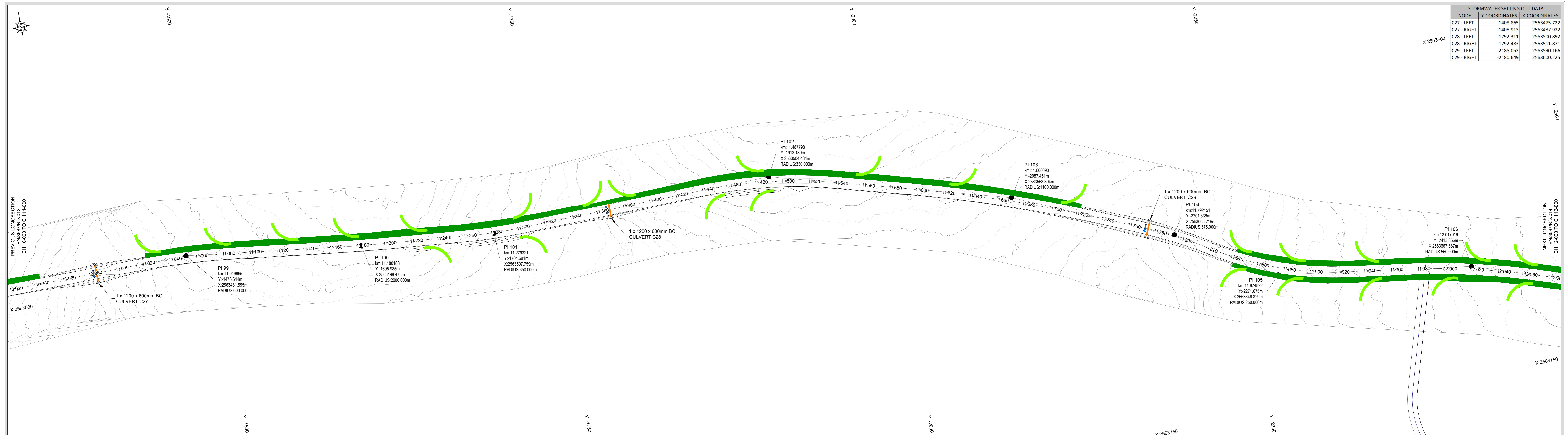


| STORMWATER SETTING OUT DATA | | |
|-----------------------------|---------------|---------------|
| NODE | Y-COORDINATES | X-COORDINATES |
| C27 - LEFT | -1408.865 | 2563475.722 |
| C27 - RIGHT | -1408.913 | 2563487.922 |
| C28 - LEFT | -1792.311 | 2563500.892 |
| C28 - RIGHT | -1792.483 | 2563511.871 |
| C29 - LEFT | -2185.052 | 2563590.166 |
| C29 - RIGHT | -2180.649 | 2563600.225 |



| VERTICAL CURVES | LEFT EDGE (4.2m) | DESIGN CENTRE LINE LEVELS | RIGHT EDGE (4.2m) | GROUND LEVELS AT GRADE LINE | CHAINAGE (m) | HORIZONTAL ALIGNMENT | SUPER ELEVATION | GUARDRAILS | SIDE DRAINS | CULVERTS |
|-----------------|------------------|---------------------------|-------------------|-----------------------------|--------------|----------------------|-----------------|------------|-----------------------------------|----------|
| VCL=80m K=12.4 | 402.036 | 402.036 | 402.036 | 402.036 | 11000 | STRAIGHT L=104.27m | | | NO SIDE DRAIN CH 10.940 TO 11.020 | |
| VCL=40m K=62.8 | 402.015 | 402.015 | 402.015 | 402.015 | 11020 | R=600.00m L=60.41m | | | | |
| VCL=50m K=41.7 | 402.009 | 402.009 | 402.009 | 402.009 | 11040 | STRAIGHT L=133.977m | | | | |
| VCL=49m K=12.2 | 402.005 | 402.005 | 402.005 | 402.005 | 11060 | R=2000.00m L=72.59m | | | | |
| VCL=40m K=16.3 | 402.002 | 402.002 | 402.002 | 402.002 | 11080 | STRAIGHT L=130.347m | | | | |
| VCL=42m K=13.2 | 402.001 | 402.001 | 402.001 | 402.001 | 11100 | R=350.00m L=38.32m | | | | |
| VCL=40m K=15.7 | 402.000 | 402.000 | 402.000 | 402.000 | 11120 | STRAIGHT L=143.261m | | | | |
| VCL=40m K=15.7 | 402.000 | 402.000 | 402.000 | 402.000 | 11140 | R=350.00m L=38.32m | | | | |
| VCL=40m K=15.7 | 402.000 | 402.000 | 402.000 | 402.000 | 11160 | STRAIGHT L=143.261m | | | | |
| VCL=40m K=15.7 | 402.000 | 402.000 | 402.000 | 402.000 | 11180 | R=350.00m L=38.32m | | | | |
| VCL=40m K=15.7 | 402.000 | 402.000 | 402.000 | 402.000 | 11200 | STRAIGHT L=143.261m | | | | |
| VCL=40m K=15.7 | 402.000 | 402.000 | 402.000 | 402.000 | 11220 | R=350.00m L=38.32m | | | | |
| VCL=40m K=15.7 | 402.000 | 402.000 | 402.000 | 402.000 | 11240 | STRAIGHT L=143.261m | | | | |
| VCL=40m K=15.7 | 402.000 | 402.000 | 402.000 | 402.000 | 11260 | R=350.00m L=38.32m | | | | |
| VCL=40m K=15.7 | 402.000 | 402.000 | 402.000 | 402.000 | 11280 | STRAIGHT L=143.261m | | | | |
| VCL=40m K=15.7 | 402.000 | 402.000 | 402.000 | 402.000 | 11300 | R=350.00m L=38.32m | | | | |
| VCL=40m K=15.7 | 402.000 | 402.000 | 402.000 | 402.000 | 11320 | STRAIGHT L=143.261m | | | | |
| VCL=40m K=15.7 | 402.000 | 402.000 | 402.000 | 402.000 | 11340 | R=350.00m L=38.32m | | | | |
| VCL=40m K=15.7 | 402.000 | 402.000 | 402.000 | 402.000 | 11360 | STRAIGHT L=143.261m | | | | |
| VCL=40m K=15.7 | 402.000 | 402.000 | 402.000 | 402.000 | 11380 | R=350.00m L=38.32m | | | | |
| VCL=40m K=15.7 | 402.000 | 402.000 | 402.000 | 402.000 | 11400 | STRAIGHT L=143.261m | | | | |
| VCL=40m K=15.7 | 402.000 | 402.000 | 402.000 | 402.000 | 11420 | R=350.00m L=38.32m | | | | |
| VCL=40m K=15.7 | 402.000 | 402.000 | 402.000 | 402.000 | 11440 | STRAIGHT L=143.261m | | | | |
| VCL=40m K=15.7 | 402.000 | 402.000 | 402.000 | 402.000 | 11460 | R=350.00m L=38.32m | | | | |
| VCL=40m K=15.7 | 402.000 | 402.000 | 402.000 | 402.000 | 11480 | STRAIGHT L=143.261m | | | | |
| VCL=40m K=15.7 | 402.000 | 402.000 | 402.000 | 402.000 | 11500 | R=350.00m L=38.32m | | | | |
| VCL=40m K=15.7 | 402.000 | 402.000 | 402.000 | 402.000 | 11520 | STRAIGHT L=143.261m | | | | |
| VCL=40m K=15.7 | 402.000 | 402.000 | 402.000 | 402.000 | 11540 | R=350.00m L=38.32m | | | | |
| VCL=40m K=15.7 | 402.000 | 402.000 | 402.000 | 402.000 | 11560 | STRAIGHT L=143.261m | | | | |
| VCL=40m K=15.7 | 402.000 | 402.000 | 402.000 | 402.000 | 11580 | R=350.00m L=38.32m | | | | |
| VCL=40m K=15.7 | 402.000 | 402.000 | 402.000 | 402.000 | 11600 | STRAIGHT L=143.261m | | | | |
| VCL=40m K=15.7 | 402.000 | 402.000 | 402.000 | 402.000 | 11620 | R=350.00m L=38.32m | | | | |
| VCL=40m K=15.7 | 402.000 | 402.000 | 402.000 | 402.000 | 11640 | STRAIGHT L=143.261m | | | | |
| VCL=40m K=15.7 | 402.000 | 402.000 | 402.000 | 402.000 | 11660 | R=350.00m L=38.32m | | | | |
| VCL=40m K=15.7 | 402.000 | 402.000 | 402.000 | 402.000 | 11680 | STRAIGHT L=143.261m | | | | |
| VCL=40m K=15.7 | 402.000 | 402.000 | 402.000 | 402.000 | 11700 | R=350.00m L=38.32m | | | | |
| VCL=40m K=15.7 | 402.000 | 402.000 | 402.000 | 402.000 | 11720 | STRAIGHT L=143.261m | | | | |
| VCL=40m K=15.7 | 402.000 | 402.000 | 402.000 | 402.000 | 11740 | R=350.00m L=38.32m | | | | |
| VCL=40m K=15.7 | 402.000 | 402.000 | 402.000 | 402.000 | 11760 | STRAIGHT L=143.261m | | | | |
| VCL=40m K=15.7 | 402.000 | 402.000 | 402.000 | 402.000 | 11780 | R=350.00m L=38.32m | | | | |
| VCL=40m K=15.7 | 402.000 | 402.000 | 402.000 | 402.000 | 11800 | STRAIGHT L=143.261m | | | | |
| VCL=40m K=15.7 | 402.000 | 402.000 | 402.000 | 402.000 | 11820 | R=350.00m L=38.32m | | | | |
| VCL=40m K=15.7 | 402.000 | 402.000 | 402.000 | 402.000 | 11840 | STRAIGHT L=143.261m | | | | |
| VCL=40m K=15.7 | 402.000 | 402.000 | 402.000 | 402.000 | 11860 | R=350.00m L=38.32m | | | | |
| VCL=40m K=15.7 | 402.000 | 402.000 | 402.000 | 402.000 | 11880 | STRAIGHT L=143.261m | | | | |
| VCL=40m K=15.7 | 402.000 | 402.000 | 402.000 | 402.000 | 11900 | R=350.00m L=38.32m | | | | |
| VCL=40m K=15.7 | 402.000 | 402.000 | 402.000 | 402.000 | 11920 | STRAIGHT L=143.261m | | | | |
| VCL=40m K=15.7 | 402.000 | 402.000 | 402.000 | 402.000 | 11940 | R=350.00m L=38.32m | | | | |
| VCL=40m K=15.7 | 402.000 | 402.000 | 402.000 | 402.000 | 11960 | STRAIGHT L=143.261m | | | | |
| VCL=40m K=15.7 | 402.000 | 402.000 | 402.000 | 402.000 | 11980 | R=350.00m L=38.32m | | | | |
| VCL=40m K=15.7 | 402.000 | 402.000 | 402.000 | 402.000 | 12000 | STRAIGHT L=143.261m | | | | |

TECHNICAL SERVICES DEPARTMENT
KRUGER NATIONAL PARK
DRAWING OFFICE (KNP)
Tel: (013) 735 3448

DESIGNED BY: A.J. NEL
CHECKED BY: C.J. SMIT
DRAWN BY: J. VAN DYK
CHECKED BY: C.J. SMIT

APPROVED BY: SEN. MAN. CIVIL & BUILDING, SEN. MAN. ELECTRO & MECHANICAL, SEN. MAN. ROADS & MAINTENANCE, MAN. PLANNING & DESIGN

SERVICE: ROADS
PROJECT: SHANGONI ROAD PH 1
TITLE: ROADS - LONGSECTION: CH-11.000 TO CH-12.000

DATE: APRIL 2024
SCALE: 1:1000
CAD FILE NAME: EN3587R301-036.dwg
PAPER SIZE: A0

CONSULTANT DWG. NO: EN/3587/R/3/013
CLIENT DWG. NO: P09/R/3/013