

SITE SURVEY NOTES

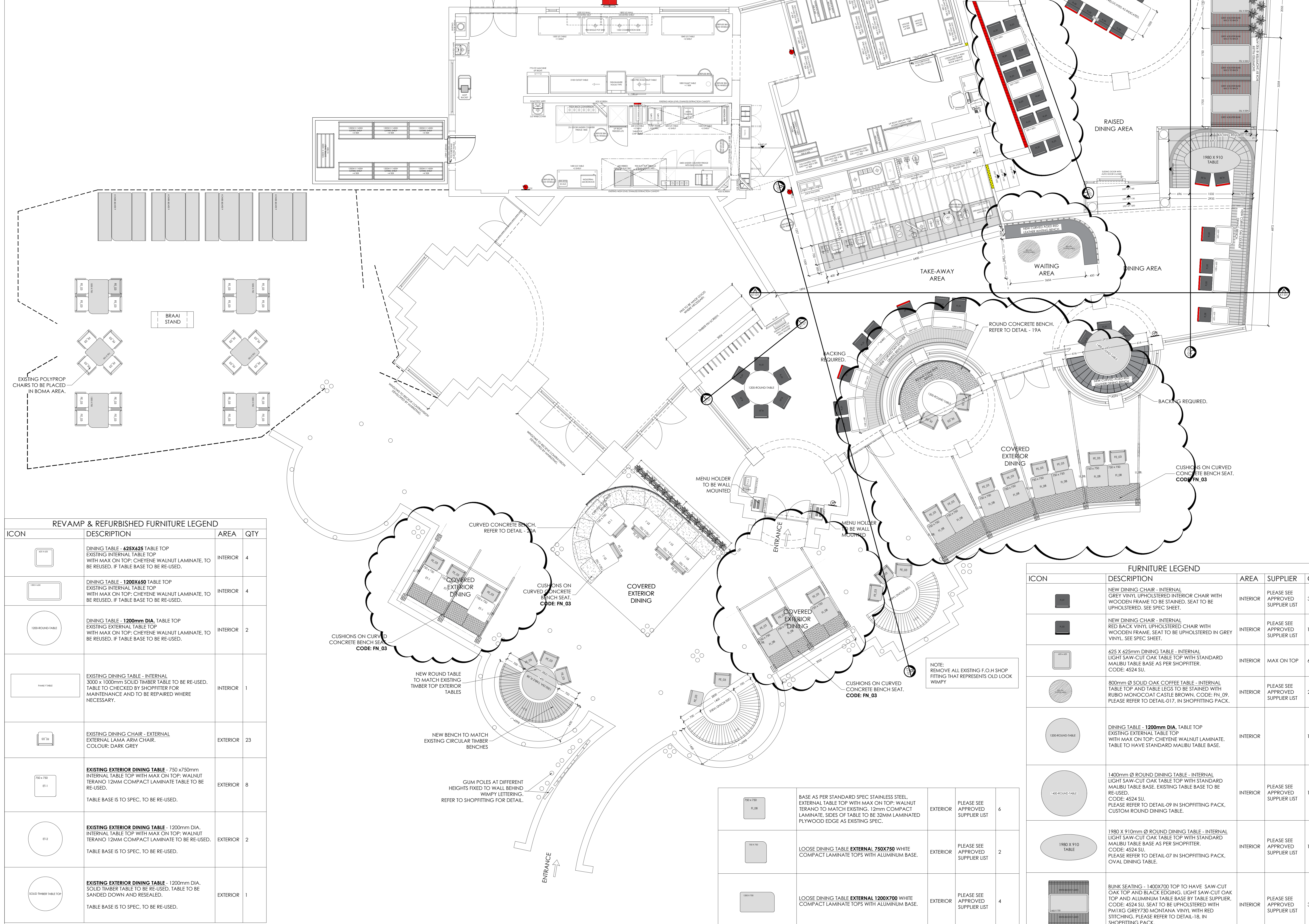
THIS SITE WAS NOT READY TO BE SURVEYED ON COMMENCEMENT WITH WORKING DRAWINGS. PROJECT MANAGER TO CHECK WHETHER PERIMETER WALLS WERE BUILT ACCORDING TO PLAN.

NOTES

ALL FURNITURE & EQUIPMENT SHADED IN GREY IS NEW. ALL OTHER FURNITURE AND EQUIPMENT NOT SHADED IS EXISTING. ALL WALL SHELVING INDICATED AS A SOLID LINE IS NEW. WALL SHELVING INDICATED AS A DASHED LINE IS EXISTING.

TOTAL HEAD COUNT

	OLD	NEW
INTERIOR SEATING	32	64
EXTERIOR SEATING	33	107
TOTAL SEATING	65	171



- HEALTH NOTES**
1. ALL WATER PIPING & ELECTRICAL CONDUITING TO BE CONCEALED IN WALLS OR EMBEDDED IN THE FLOOR SURFACES.
 2. ALL EQUIPMENT INCLUDING FRIDGE & FREEZERS TO BE FREESTANDING TYPE OR MOUNTED ON LEGS 250MM ABOVE FLOOR LEVEL.
 3. FLOORS OF PREPARATION AREA, WASH-UP, SERVERY, TAKE AWAY & W.C.'S TO BE NON-SLIP CERAMIC TILES WITH 3MM EPOXY GROUTING GRADDED & DRAINED TO GULLY.
 4. A SPACE OF 100MM TO BE ALLOWED BETWEEN WASH-UP SINKS & FITTINGS.
 5. ALL WINDOW SILLS & TOPS OF WALLS NOT EXTENDED TO CEILING TO BE 45 DEGREES.
 6. WALL SURFACES IN PREPARATION AREA, WASH-UP & SERVERY TO BE TILED TO FULL HEIGHT.
 7. STORE ROOM TO BE EQUIPPED WITH FREE STANDING METAL SHELVES RAISED 250MM ABOVE FLOOR ON METAL LEGS.
 8. A SUPPLY OF HOT & COLD WATER AT ALL WHB'S WASH-UP SINKS.
 9. WALL SURFACES BEHIND & ABOVE ALL WHB'S TO BE COVERED WITH GLAZED TILES.
 10. ALL TABLES & OTHER WORKING SURFACES TO BE OF STAINLESS STEEL WITH 100MM HIGH UPRIGHT.
 11. POTATO PEELER TO BE SEPARATE UNIT WITH LEGS.
 12. PREMISES TO BE MADE RODENT PROOF.
 13. ALL WORK TO BE DONE IN A WORKMANLIKE MANNER & TO THE SATISFACTION OF THE HEALTH DEPARTMENT.
 14. ALL ELECTRICAL CONNECTING CABLES TO BE PVC ENCASED.
 15. MECHANICAL VENTILATION:
 - (i) HABITABLE AREAS: FRESH AIR TO BE SUPPLIED AT A RATE OF 17.5L/PERSON. AIR TO BE EVENLY DISTRIBUTED THROUGHOUT ALL HABITABLE AREAS AND THE VELOCITY IS NOT TO EXCEED 0.5M/S.
 - (ii) KITCHENS: FRESH AIR SUPPLIED AT A RATE OF 7.5L/PERSON (COMMERCIAL). AIR TO BE EVENLY DISTRIBUTED THROUGHOUT THE KITCHEN AND THE VELOCITY IS NOT TO EXCEED 0.5M/S.
 - (iii) WATER CLOSETS: AIR TO BE EXTRACTED TO EXTERNAL AT A RATE OF 20L/PERSON PER FITMENT (COMMERCIAL/INDUSTRIAL PREMISES).

- GENERAL NOTES**
1. EXTERNAL WALLS TO COMPLY WITH H.B.R. 110 WALL FOUNDATIONS TO BE MINIMUM 600 WIDE & 200 THICK.
 2. CANOPY & EXTRACTION DUCT TO COMPLY WITH ALL LOCAL REGULATIONS.
 3. ALL LIGHTING & VENTILATION TO COMPLY WITH PART 'D' OF THE NATIONAL BUILDING REGULATIONS.
 4. 2 A.B.'S TO EACH URINAL & SHOWER.
 5. 2 A.B.'S OVER EACH FAN-LESS DOOR OR WINDOW.

ENVIRONMENTAL HEALTH NOTE:

THE PREMISES MUST COMPLY WITH THE PROVISIONS OF THE TOBACCO PRODUCTS CONTROL AMENDMENT ACT, 1999

IMPORTANT NOTES

ALL DIMENSIONS TO BE CONFIRMED ON SITE PRIOR TO COMMENCEMENT OF CONTRACT. DO NOT SCALE THIS DRAWING. USE FIGURED DIMENSIONS ONLY. ANY DISCREPANCIES TO BE BROUGHT UNDER THE ATTENTION OF DHD DESIGNER & FAMOUS BRANDS PROJECT MANAGERS BEFORE COMMENCING WITH WORK. FAMOUS BRANDS WILL NOT BE HELD RESPONSIBLE FOR COST INCURRED.

SQUARE METERS

B.O.H. %	40%
F.O.H. %	40%
TOTAL RESTAURANT INTERIOR AREA	317.400000
B.O.H. AREA	137
F.O.H. AREA	180.4
PLAY WORLD AREA	0
EXTERIOR AREA	0

“COUNCIL SUBMISSION PLAN”

DHO INTERIOR BRAND ARCHITECTS
LINCOLNWOOD OFFICE PARK BLOCK D,
WOODMEAD DR. WOODMEAD
TEL: 010 140 8520

DAVID COUSINS
SACAP: PAD 24749835

CYCLONE 1.2 APPROVED

REVAMP & REFURBISHED FURNITURE LEGEND

ICON	DESCRIPTION	AREA	QTY
[Icon]	DINING TABLE - 625x625 TABLE TOP EXISTING INTERNAL TABLE TOP WITH MAX ON TOP: CHEYENE WALNUT LAMINATE. TO BE RE-USED, IF TABLE BASE TO BE RE-USED.	INTERIOR	4
[Icon]	DINING TABLE - 1200x650 TABLE TOP EXISTING INTERNAL TABLE TOP WITH MAX ON TOP: CHEYENE WALNUT LAMINATE. TO BE RE-USED, IF TABLE BASE TO BE RE-USED.	INTERIOR	4
[Icon]	DINING TABLE - 1200mm DIA. TABLE TOP EXISTING EXTERNAL TABLE TOP WITH MAX ON TOP: CHEYENE WALNUT LAMINATE. TO BE RE-USED, IF TABLE BASE TO BE RE-USED.	INTERIOR	2
[Icon]	EXISTING DINING TABLE - INTERNAL 3000 x 1000mm SOLID TIMBER TABLE TO BE RE-USED. TABLE TO CHECKED BY SHOPFITTER FOR MAINTENANCE AND TO BE REPAIRED WHERE NECESSARY.	INTERIOR	1
[Icon]	EXISTING DINING CHAIR - EXTERNAL EXTERNAL LAMA ARMA CHAIR. COLOUR: DARK GREY	EXTERIOR	23
[Icon]	EXISTING EXTERIOR DINING TABLE - 750 x 750mm INTERNAL TABLE TOP WITH MAX ON TOP: WALNUT TERANO 12MM COMPACT LAMINATE TABLE TO BE RE-USED.	EXTERIOR	8
[Icon]	EXISTING EXTERIOR DINING TABLE - 1200mm DIA. INTERNAL TABLE TOP WITH MAX ON TOP: WALNUT TERANO 12MM COMPACT LAMINATE TO BE RE-USED.	EXTERIOR	2
[Icon]	EXISTING EXTERIOR DINING TABLE - 1200mm DIA. SOLID TIMBER TABLE TO BE RE-USED. TABLE TO BE SANDED DOWN AND RESEALED.	EXTERIOR	1

FURNITURE LEGEND

ICON	DESCRIPTION	AREA	SUPPLIER	QTY
[Icon]	NEW DINING CHAIR - INTERNAL GREY VINYL UPHOLSTERED INTERIOR CHAIR WITH WOODEN FRAME TO BE STAINED. SEAT TO BE UPHOLSTERED. SEE SPEC SHEET.	INTERIOR	PLEASE SEE APPROVED SUPPLIER LIST	30
[Icon]	NEW DINING CHAIR - INTERNAL RED BACK VINYL UPHOLSTERED CHAIR WITH WOODEN FRAME. SEAT TO BE UPHOLSTERED IN GREY VINYL. SEE SPEC SHEET.	INTERIOR	PLEASE SEE APPROVED SUPPLIER LIST	16
[Icon]	625 X 625mm DINING TABLE - INTERNAL LIGHT SAW-CUT OAK TABLE TOP WITH STANDARD MALIBU TABLE BASE AS PER SHOPFITTER. CODE: 4524 SU.	INTERIOR	MAX ON TOP	6
[Icon]	800mm Ø SOLID OAK COFFEE TABLE - INTERNAL TABLE TOP AND TABLE LEGS TO BE STAINED WITH RIBBO MONOCOAT CASTLE BROWN. CODE: FN 09. PLEASE REFER TO DETAIL-017. IN SHOPFITTING PACK.	INTERIOR	PLEASE SEE APPROVED SUPPLIER LIST	2
[Icon]	DINING TABLE - 1200mm DIA. TABLE TOP EXISTING EXTERNAL TABLE TOP WITH MAX ON TOP: CHEYENE WALNUT LAMINATE. TABLE TO HAVE STANDARD MALIBU TABLE BASE.	INTERIOR	PLEASE SEE APPROVED SUPPLIER LIST	1
[Icon]	1400mm Ø ROUND DINING TABLE - INTERNAL LIGHT SAW-CUT OAK TABLE TOP WITH STANDARD MALIBU TABLE BASE. EXISTING TABLE BASE TO BE RE-USED. CODE: 4524 SU. PLEASE REFER TO DETAIL-09 IN SHOPFITTING PACK. CUSTOM ROUND DINING TABLE.	INTERIOR	PLEASE SEE APPROVED SUPPLIER LIST	1
[Icon]	1980 X 910mm Ø ROUND DINING TABLE - INTERNAL LIGHT SAW-CUT OAK TABLE TOP WITH STANDARD MALIBU TABLE BASE AS PER SHOPFITTER. CODE: 4524 SU. SEAT TO BE UPHOLSTERED WITH PM1XG GREY730 MONTANA VINYL WITH RED STITCHING. PLEASE REFER TO DETAIL-18. IN SHOPFITTING PACK.	INTERIOR	PLEASE SEE APPROVED SUPPLIER LIST	1
[Icon]	BUNK SEATING - 1400x700 TOP TO HAVE SAW-CUT OAK TOP AND BLACK EDGING. LIGHT SAW-CUT OAK TOP AND ALUMINUM TABLE BASE BY TABLE SUPPLIER. CODE: 4524 SU. SEAT TO BE UPHOLSTERED WITH PM1XG GREY730 MONTANA VINYL WITH RED STITCHING. PLEASE REFER TO DETAIL-18. IN SHOPFITTING PACK.	INTERIOR	PLEASE SEE APPROVED SUPPLIER LIST	3
[Icon]	NEW DINING CHAIR - EXTERNAL EXTERNAL LAMA ARMA CHAIR. COLOUR: DARK GREY	EXTERIOR	MERGE DESIGNS	30

[Icon]	BASE AS PER STANDARD SPEC. STAINLESS STEEL EXTERNAL TABLE TOP WITH MAX ON TOP: WALNUT TERANO TO MATCH EXISTING. 12mm COMPACT LAMINATE. SIDES OF TABLE TO BE 32MM LAMINATED PLYWOOD EDGE AS EXISTING SPEC.	EXTERIOR	PLEASE SEE APPROVED SUPPLIER LIST	6
[Icon]	LOOSE DINING TABLE EXTERNAL 750x750 WHITE COMPACT LAMINATE TOPS WITH ALUMINUM BASE.	EXTERIOR	PLEASE SEE APPROVED SUPPLIER LIST	2
[Icon]	LOOSE DINING TABLE EXTERNAL 1200x700 WHITE COMPACT LAMINATE TOPS WITH ALUMINUM BASE.	EXTERIOR	PLEASE SEE APPROVED SUPPLIER LIST	4
[Icon]	BENCH SEATING TABLE EXTERNAL 6 SEATER WHITE COMPACT LAMINATE TOPS WITH ALUMINUM BASE. TO HAVE TIMBER COMPACT LAMINATE SEAT. NATURAL OAK. LIGHT MAX ON TOP. REFER TO SHOPFITTING MANUAL	EXTERIOR	PLEASE SEE APPROVED SUPPLIER LIST	4

EQUIPMENT LAYOUT
SCALE 1:50

DRAWING NO. W - 110401 - MP - K1

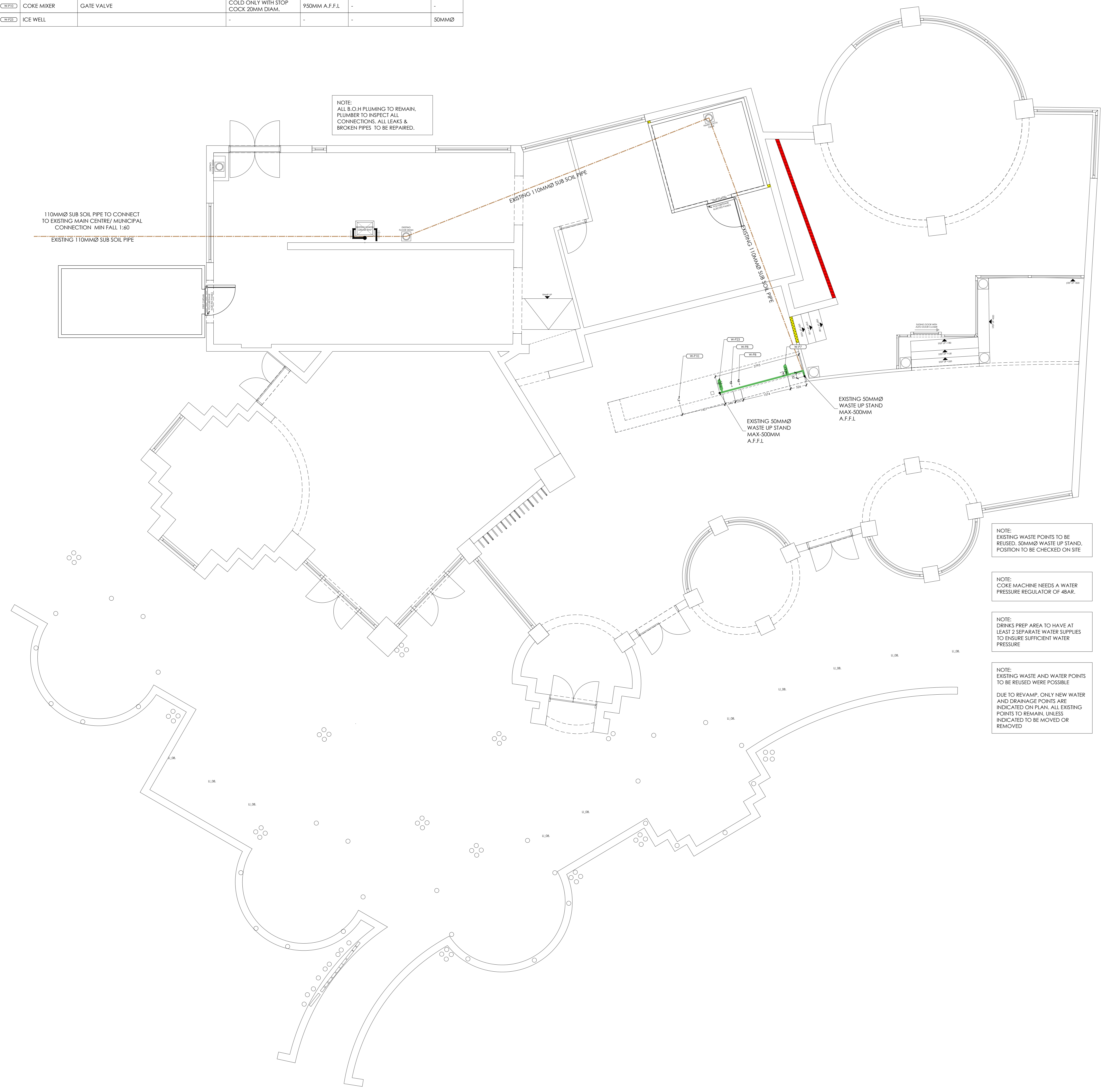
DATE: 04.03.2019 SCALE: 1:50 PROJECT: WIMPY PRETORIUSKOP REVAMP

DO NOT SCALE. USED FIGURED DIMENSIONS. COPYRIGHT RESERVED

SANITARY SCHEDULE					
EQUIPMENT	FITTING	WATER SUPPLY	SUPPLY HEIGHT	EXTRA	WASTE
0277 SANMARCO COFFEE MACHINE	GATE VALVE	COLD ONLY WITH STOP COCK 20MM DIAM.	950MM A.F.F.L.	FLEXI HOSE TO CONNECT TO COFFEE MACHINE BY PLUMBER	50MMØ
0278 DRIP COFFEE MACHINE	GATE VALVE	COLD ONLY WITH STOP COCK 20MM DIAM.	600MM A.F.F.L.	FLEXI HOSE TO CONNECT TO COFFEE MACHINE BY PLUMBER	-
0293 COKE MIXER	GATE VALVE	COLD ONLY WITH STOP COCK 20MM DIAM.	950MM A.F.F.L.	-	-
0292 ICE WELL		-	-	-	50MMØ

NOTE:
ALL B.O.H PLUMBING TO REMAIN.
PLUMBER TO INSPECT ALL CONNECTIONS. ALL LEAKS & BROKEN PIPES TO BE REPAIRED.

110MMØ SUB SOIL PIPE TO CONNECT TO EXISTING MAIN CENTRE MUNICIPAL CONNECTION MIN FALL 1:60
EXISTING 110MMØ SUB SOIL PIPE



NOTE:
EXISTING WASTE POINTS TO BE REUSED. 50MMØ WASTE UP STAND POSITION TO BE CHECKED ON SITE

NOTE:
COKE MACHINE NEEDS A WATER PRESSURE REGULATOR OF 4BAR.

NOTE:
DRINKS PREP AREA TO HAVE AT LEAST 2 SEPARATE WATER SUPPLIES TO ENSURE SUFFICIENT WATER PRESSURE

NOTE:
EXISTING WASTE AND WATER POINTS TO BE REUSED WHERE POSSIBLE
DUE TO REVAMP, ONLY NEW WATER AND DRAINAGE POINTS ARE INDICATED ON PLAN. ALL EXISTING POINTS TO REMAIN, UNLESS INDICATED TO BE MOVED OR REMOVED

BUILDERS NOTES

THIS DRAWING IS TO BE READ IN CONJUNCTION WITH THE K4 - TILING & WALL FINISHES DRAWING

FLOOR:
- FLOORS WHICH FALL TO FLOOR DRAIN TO HAVE A MIN. FALL OF 1:20 & 1:40 MAX.
- MIN. 30MM SCREED TO FLOOR TO FALL TO FLOOR DRAIN, FILLING UP THOSE SECTIONS.
- ACID RESISTANT GROUT TO BE USED.
- REST OF FLOORS TO RECEIVE 30MM SCREED.
- PREPARE FOR TILING
- AREAS TO RECEIVE VINYL FLOORING TO BE PREPARED AS PER MANUFACTURERS SPECIFICATIONS

WALLS:
- ALL NEW INTERNAL WALLS TO BE BUILT 150MM ABOVE CEILING HEIGHT, UNLESS OTHERWISE INDICATED.
- ANY DOORS OR WINDOWS REMOVED, OR OPENINGS TO BE BRICKED UP, TO BE FINISHED ACCORDING TO SECTION DRAWINGS.

PLASTER:
REFER TO EQUIPMENT LAYOUT FOR SPECIFIED AREAS.
CUSTOMER TILED AREAS
- 12MM WOOD FLOATED CEMENT PLASTER FINISHED WITH STEEL TROWEL AND PREPARED FOR TILING.
CUSTOMER AREA - PAINTED AREA
- 12MM WOOD FLOATED CEMENT PLASTER TO HAVE SMOOTH RHINOULITE FINISH IN PREPARATION FOR PAINT.
KITCHEN: FOOD PREPARATION, SERVERY AND WASH-UP AREA
- 12MM WOOD FLOATED CEMENT PLASTER FINISHED WITH STEEL TROWEL AND PREPARED FOR TILING, TILE TO CEILING HEIGHT.
- PLACE 45° NCI TILE SKIRTING AS SPECIFIED.
KITCHEN: FOOD STORE, STAFF CHANGE ROOM & RECORDS ROOM
- 12MM WOOD FLOATED CEMENT PLASTER, GENTLY FINISHED WITH STEEL TROWEL AND PREPARED FOR PAINTING.
- PLACE 90° NCI TILE SKIRTING AS SPECIFIED.

DRAINAGE NOTES

THE DESIGN OF THE DRAINAGE SYSTEM IS IN ACCORDANCE WITH THE DETAILED REQUIREMENTS OF SANS 10400-P. THE SUBJECT OF A RATIONAL DESIGN OR RATIONAL ASSESSMENT (OR BOTH) IS THE SUBJECT OF AN AGREEMENT CERTIFICATE COMPRISING PAIL CLOSES WHICH ARE EMPLOYED BY OR ON BEHALF OF A LOCAL AUTHORITY.

- LANDLORD TO SUPPLY MAIN WATER & WASTE/SEWER CONNECTION.
- ENSURE THAT THERE IS SUFFICIENT FALL FOR ALL KITCHEN DRAINAGE & WASTE TO MEET MUNICIPAL CONNECTION POINT.

- ALL SINKS TO DISCHARGE INTO GREASE TRAP.
- GREASE TRAP TO BE ROFO GT 500.
- SURFACE DRAINAGE - SOLID LINES SUB SOIL - DASHED FLOOR DRAINS AS SPECIFIED.
- ALL STORMWATER PIPES & DRAINS TO DETAIL BY ENGINEER.
- DRAINAGE INSTALLATION TO COMPLY WITH NBR. & LOCAL MUNICIPAL REQUIREMENTS.
- R.E.S TO ALL CHANGE OF DIRECTION/GRADIENT OF DRAINS.
- R.E.S TO ALL JUNCTIONS.
- MARKED COVERS TO R.E.S BELOW PAVED AREAS.
- RESEAL TRAPS TO ALL WASTE FITTINGS.
- ADEQUATE PIPE ACCESS WILL BE PROVIDED.

GEYSER NOTES:
- SUPPLY 200 LITRE GEYSER IN WASH-UP AREA.
- GEYSER NET WEIGHT = 40KG.
- GEYSER GROSS WEIGHT = 260KG.

IN THE CASE OF A NEW SLAB/SCREEDS:
- BUILDER TO APPLY SCREED TO ENSURE FALL TO WATER DRAINS AS INDICATED ON PLAN.
- FALL'S TO DRAINAGE NOT TO EXCEED A GRADIENT OF MORE THAN 1 IN 200 (3MM IN HEIGHT FOR EVERY 1000MM IN LENGTH).

IN CASE OF EXISTING SLABS/SCREEDS:
- BUILDER/TILER CONTRACTOR TO EVALUATE THE FLOOR CONDITIONS & ENSURE BEFORE TILING THAT FLOORS ARE 100% LEVEL & SO THAT AFTER TILING, WATER DOES NOT FLOW AWAY FROM DRAINS BUT THAT WATER WILL FLOW TO FLOOR DRAIN POSITIONS AS INDICATED ON PLAN, ELSE BUILDER TO APPLY SCREED & FALL TO WATER DRAINS.
- FALL'S TO DRAINAGE NOT TO EXCEED A GRADIENT OF MORE THAN 1 IN 200 (3MM IN HEIGHT FOR EVERY 1000MM IN LENGTH).

HEALTH NOTES

1. ALL WATER PIPING & ELECTRICAL CONDUCTING TO BE CONCEALED IN WALLS OR EMBEDDED IN THE FLOOR SURFACES.
2. ALL EQUIPMENT INCLUDING FRIDGE & FREEZERS TO BE REFRIG. TYPE OR MOUNTED ON LEGS 250MM ABOVE FLOOR LEVEL.
3. FLOORS OF PREPARATION AREA, WASH-UP, SERVERY, TAKE AWAY & W.C.'S TO BE NON-SLIP CERAMIC TILES WITH 3MM EPOXY GROUTING GRADDED & DRAINED TO GULLY.
4. A SPACE OF 100MM TO BE ALLOWED BETWEEN WASH-UP SINKS & FITTINGS.
5. ALL WINDOW SILLS & TOPS OF WALLS NOT EXTENDED TO CEILING TO BE 45 DEGREES.
6. WALL SURFACES IN PREPARATION AREA, WASH-UP & SERVERY TO BE TILED TO FULL HEIGHT.
7. STORE ROOM TO BE EQUIPPED WITH FREE STANDING METAL SHELVES RAISED 250MM ABOVE FLOOR ON METAL LEGS.
8. A SUPPLY OF HOT & COLD WATER AT ALL WHB'S WASH-UP SINKS.
9. WALL SURFACES BEHIND & ABOVE ALL WHB'S TO BE COVERED WITH GLAZED TILES.
10. ALL TABLES & OTHER WORKING SURFACES TO BE OF STAINLESS STEEL WITH 100MM HIGH UPRIGHT.
11. POTATO PEELER TO BE SEPARATE UNIT WITH LEGS.
12. PREMISES TO BE MADE RODENT PROOF.
13. ALL WORK TO BE DONE IN A WORKMANLIKE MANNER & TO THE SATISFACTION OF THE HEALTH DEPARTMENT.
14. ALL ELECTRICAL CONNECTING CABLES TO BE PVC ENCASED.
15. MECHANICAL VENTILATION:
(i) HABITABLE AREAS: FRESH AIR TO BE SUPPLIED AT A RATE OF 17 SL/S/PERSON. AIR TO BE EVENLY DISTRIBUTED THROUGHOUT ALL HABITABLE AREAS AND THE VELOCITY IS NOT TO EXCEED 0.5M/S.
(ii) KITCHENS: FRESH AIR SUPPLIED AT A RATE OF 7.5 SL/S/PERSON (COMMERCIAL). AIR TO BE EVENLY DISTRIBUTED THROUGHOUT THE KITCHEN AND THE VELOCITY IS NOT TO EXCEED 0.5M/S.
(iii) WATER CLOSETS: AIR TO BE EXTRACTED TO EXTERNAL AT A RATE OF 20 SL/S/PERSON PER FITMENT (COMMERCIAL/INDUSTRIAL PREMISES).

GENERAL NOTES

1. EXTERNAL WALLS TO COMPLY WITH N.B.R. 110 WALL FOUNDATIONS TO BE MINIMUM 600 WIDE & 200 THICK.
2. CANOPY & EXTRACTION DUCT TO COMPLY WITH ALL LOCAL REGULATIONS.
3. ALL LIGHTING & VENTILATION TO COMPLY WITH PART 'D' OF THE NATIONAL BUILDING REGULATIONS.
4. 2 A.B.'S TO EACH URINAL & SHOWER.
5. 2 A.B.'S OVER EACH FAN-LESS DOOR OR WINDOW.

ENVIRONMENTAL HEALTH NOTE:
THE PREMISES MUST COMPLY WITH THE PROVISIONS OF THE TOBACCO PRODUCTS CONTROL AMENDMENT ACT, 1999

IMPORTANT NOTES

ALL DIMENSIONS TO BE CONFIRMED ON SITE PRIOR TO COMMENCEMENT OF CONTRACT.
DO NOT SCALE THIS DRAWING USE FIGURED DIMENSIONS ONLY. ANY DISCREPANCIES TO BE BROUGHT UNDER THE ATTENTION OF DHQ DESIGNER & FAMOUS BRANDS PROJECT MANAGERS BEFORE COMMENCING WITH WORK. FAMOUS BRANDS WILL NOT BE HELD RESPONSIBLE FOR COST INCURRED

SQUARE METERS

8.0.H. %	40%
F.O.H. %	60%
TOTAL RESTAURANT INTERIOR AREA	317.400000
8.0.H AREA	137
F.O.H AREA	180.4
PLAY WORLD AREA	0
EXTERIOR AREA	0



"COUNCIL SUBMISSION PLAN"

DHO INTERIOR BRAND ARCHITECTS
LINCOLNWOOD OFFICE PARK BLOCK D,
WOODMEAD DR, WOODMEAD
TEL: 010 140 8520
DAVID COUSINS
SACAP: PAD 24749835

REV	DATE	DETAILS	NAME
A	09.10.19	REDUCED PERGOLA BEAMS AND SLAT REMOVED COLUMN CLADDING REVISED TAKE AWAY BENCH REDUCED TILING AT TAKE AWAY REDUCED FRAMING RULES TO EXTERIOR	

DHO
INTERIOR \ BRAND \ ARCHITECTS
Famous Brands Design Studio Trading As DHQ
Lincolnwood Office Park
Building D - Ground Floor
6 - 8 Woodlands Drive, Woodmead
TEL: 010 140 8520
E-Mail: info@dhqpa.co.za
BRAND TEMPLATE 0007



PROJECT: INTERNAL SHOP FITTING & ALTERATIONS TO
WIMPY PRETORIUSKOP REVAMP

ADDRESS:
ERF NUMBER:
PRETORIUS CAMP
KRUGER NATIONAL PARK, 1200
NPUMALANGA

DESCRIPTION - WORKING DRAWING
PLUMBING LAYOUT

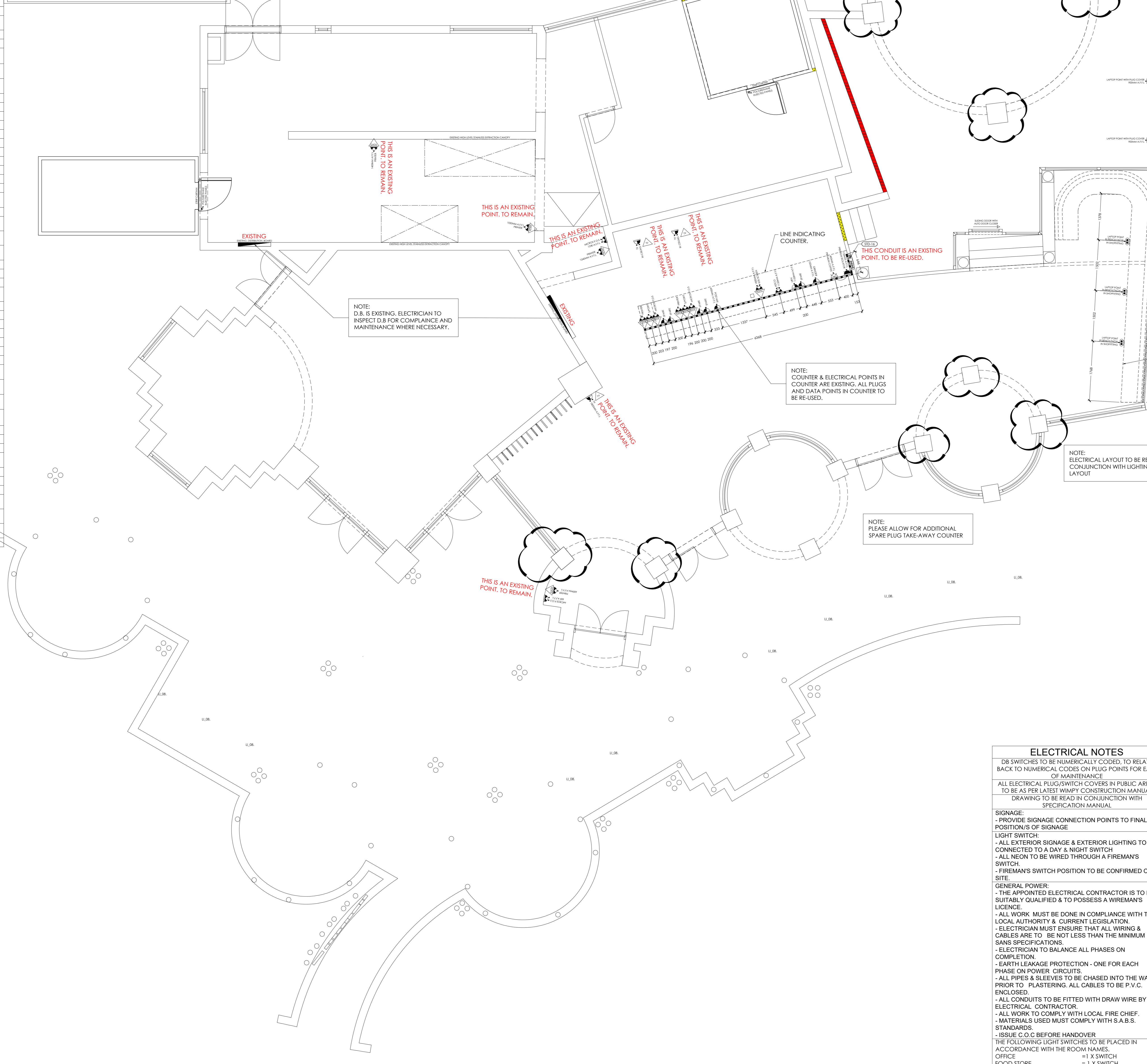
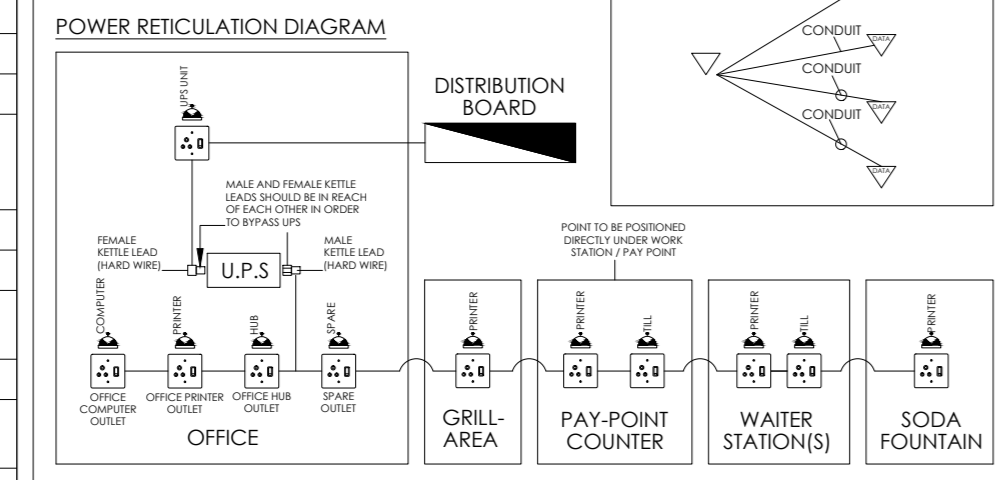
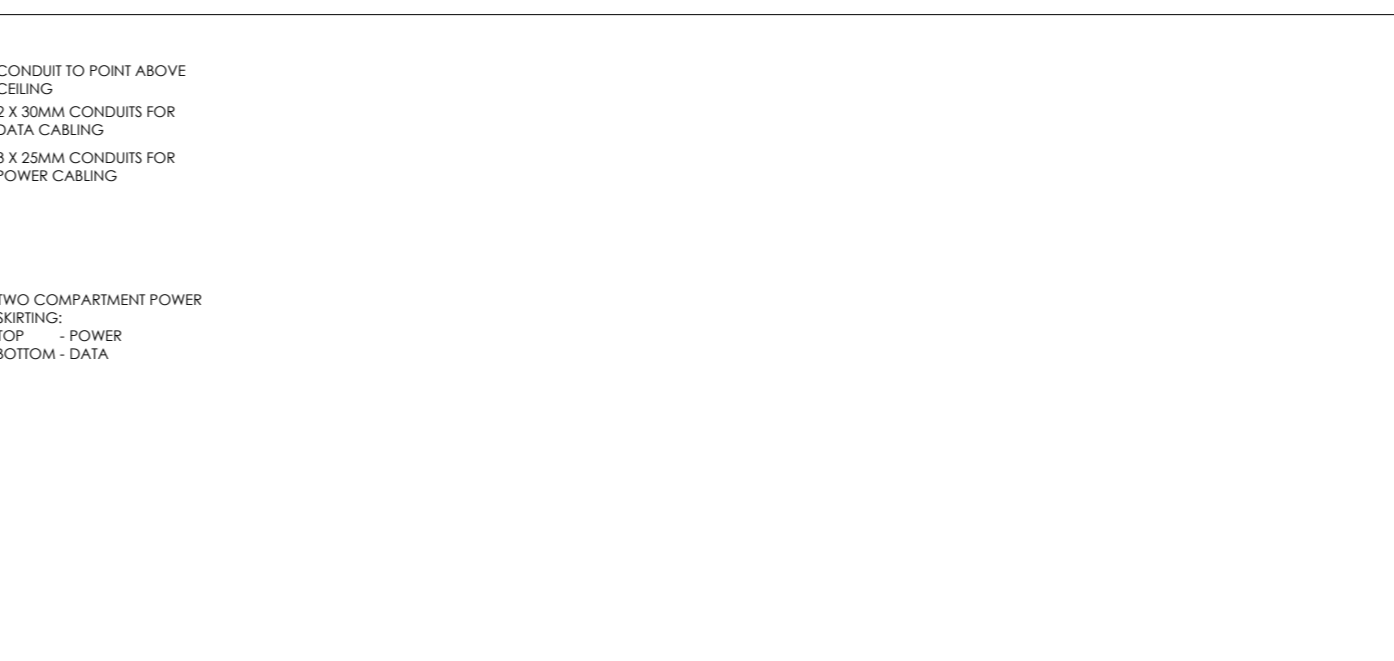
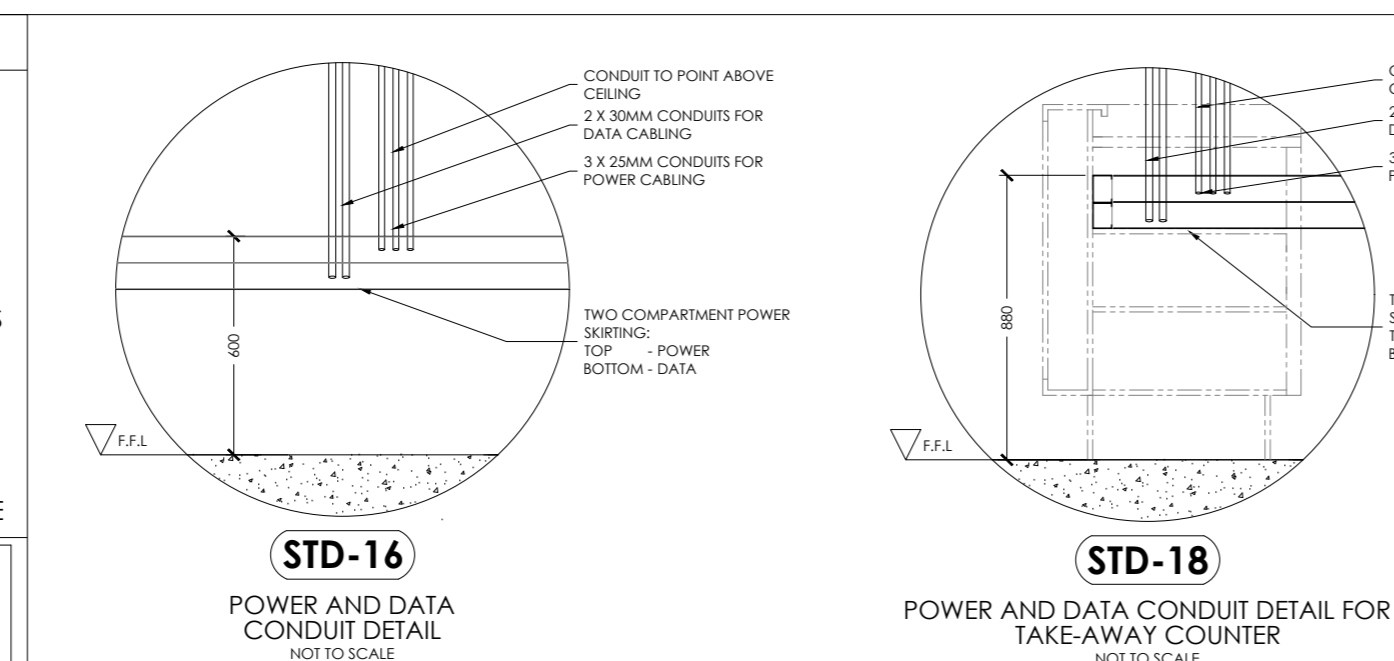
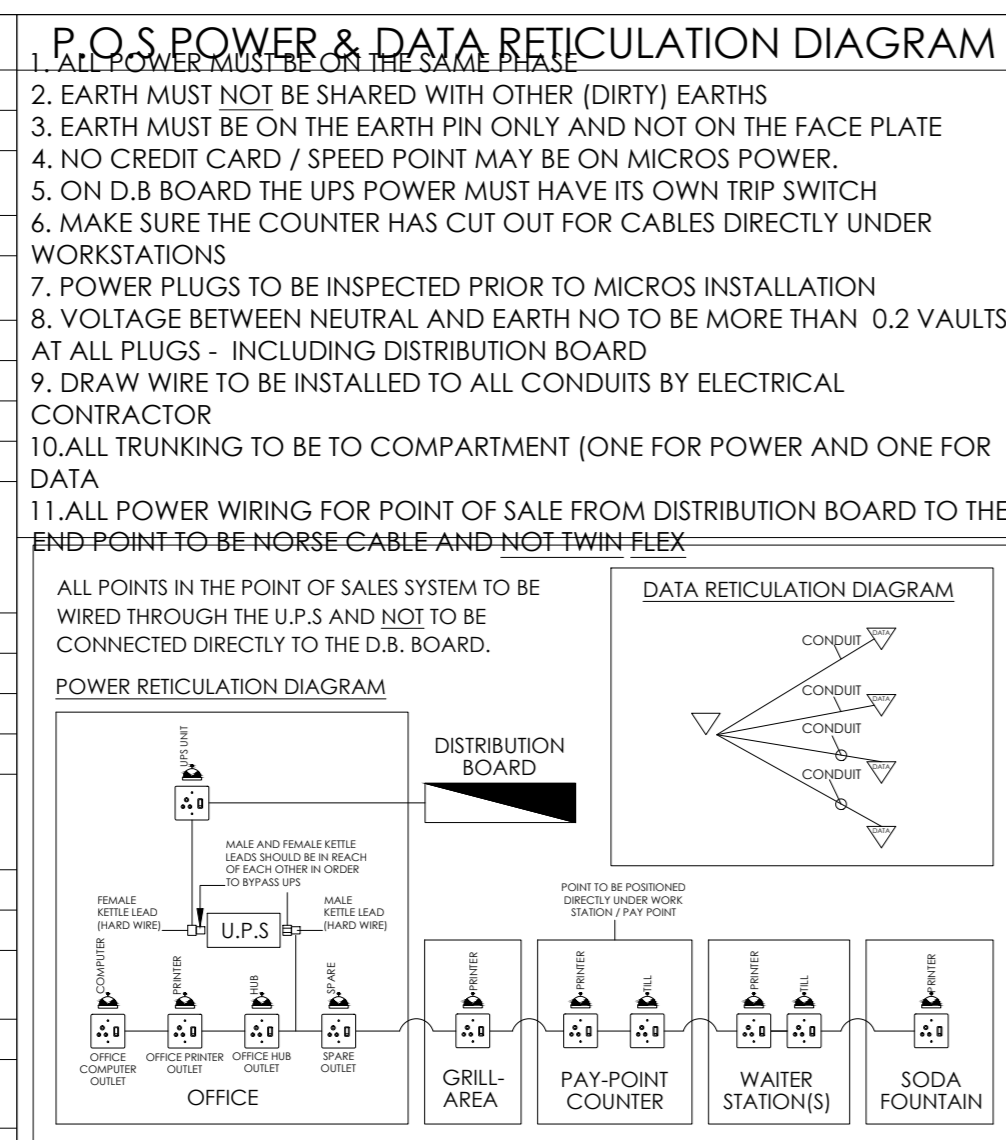
DRAWING NO.
W - 110401 - MP - K3

DATE	SCALE	CHECKED	REV
04.03.2019	1:50		A

DO NOT SCALE, USED FIGURED DIMENSIONS COPYRIGHT RESERVED

PLUMBING LAYOUT
SCALE 1:50

EQUIPMENT SCHEDULE		P.O.S POWER & DATA RETICULATION DIAGRAM	
DESCRIPTION	LOADING	HEIGHTS	
ELECTRIC CHAR GRILL	3 PHASE, 6 KW	1050MM	
GRIDDLE - FLAT TOP	3 PHASE, 10 KW; 45AMP	1050MM	
HEATED RISER SHELF (DOUBLE)	1.7KW, 8AMP (X2)	1050MM	
PRINCE CASTLE TOASTER (RUN)	220V, 1750W, 15AMP	1050MM	
FISH FRYER	3KW, 15AMP	1150MM	
CHICKEN FRYER	3KW, 15AMP	1150MM	
EGG FRYER / OMELETTE FLAT TOP	3KW, 15AMP	1150MM	
CHIP DUMP WITH HEAT LAMPS	15AMP	1150MM	
DOUBLE PAN CHIP FRYER	3 PHASE, 380V, 45AMP CIRCUIT BREAKERS; 16KW PER PAN (X2)	1150MM	
CHEST FREEZER / UPRIGHT FREEZER	8AMP, 15AMP	1150MM	
ANVIL TOASTER	220V, 15AMP	1150MM	
SILEX / PANINI TOASTER	220V, 15AMP	1150MM	
UNDER BAR FRIDGE	220V, 15AMP	600MM	
HOT HOLDING CABINET	19AMP SINGLE PHASE, 25 AMP CIRCUIT	1050MM	
2 PLATE HOT PLATE / INDUCTION	15 AMP	1050MM	
MICROWAVE	15AMP	1800MM	
EXTRACTOR FAN & RETURN AIR	15AMP, 3 PHASE, 3KW, 10AMP	STOP/START - 2000MM	
SPARE PLUG	15AMP	1150MM	
BAINE MARIE	15AMP OR 3 PHASE, 30AMP	1050MM	
HENRY PENNY PRESSURE FRYER	3 PHASE, 30AMP	1150MM	
HUMIDIFIED DISPLAY CABINET	3 PHASE, 20AMP	1150MM	
NEICO BROILER (DRIVE-THRU ONLY)	15AMP GAS POINT, WATER POINT	1150MM	
BURGER SHUTE (DRIVE-THRU ONLY)	15AMP	1150MM	
CHIP SHUTE (DRIVE-THRU ONLY)	15AMP	1150MM	
BAGGING STATION (DRIVE-THRU ONLY)	220V, 15AMP	1150MM	
WAFFLE IRON	120V, 1.9KW, 12AMP	1150MM	
SOFT SERVE ICE CREAM MACHINE	3 PHASE, 20AMP, 12KW, 4KW	1150MM	
MILK SHAKE MIXER	15AMP	1150MM	
UNDER BAR FRIDGE	220V, 15AMP	600MM	
CIRO / FETCO COFFEE MACHINE	15AMP	1150MM	
HAMILTON BEACH TEMPEST BLENDER	15AMP	IN COKE TABLE	
ICE MACHINE	6AMP	IN COKE TABLE	
JUICE DISPENSER	15AMP	IN COKE TABLE	
COFFEE DISPENSER	15AMP	IN COKE TABLE	
COFFEE MACHINE (PREMIUM)	3 PHASE, 30AMP	IN COKE TABLE	
MILK FROTHER	15AMP	IN COKE TABLE	
MILK URN	3KW	IN COKE TABLE	
COFFEE GRINDER	15AMP	IN COKE TABLE	
TWIKOT ZIP WATER HEATER/ HYDROSOIL	15AMP	1750MM	
MICROWAVE	15AMP	AS PER DWG	
TAYLOR MILKSHAKE MACHINE	3 PHASE, 220V, 15AMP	1150MM	
COLD ROOM / FREEZER	10AMP & 3 PHASE, 15AMP	AS PER DWG	
DISHWASHER	380V, 9.1KW, 3 PHASE, 40AMP	1150MM	
PREP TABLE SPARE	15AMP, 220V	1150MM	
UNDER BAR FRIDGE	220V, 15AMP	600MM	
UPRIGHT REACH-IN CHILLER	15AMP	1150MM	
MACEATOR	380V, 6.5KW, 3 PHASE	600MM	
TOUCH SCREEN (WATER POS)	15AMP	AS PER DWG	
SLIP PRINTER (WATER POS)	15AMP	AS PER DWG	
CASH TILL / POINT OF SALE	15AMP CLEAR LINE	AS PER DWG	
SPARE / POINT OF SALE	15AMP	AS PER DWG	
SLIP PRINTER	15AMP	AS PER DWG	
SPEED POINT	15AMP	AS PER DWG	
KDS TOUCH SCREEN	15AMP	AS PER DWG	
HI-FI	15AMP	CONSULT CONTRACTOR	
WI-FI	15AMP	CONSULT CONTRACTOR	
SIGNAGE	RECOMMENDED BY SPECIALIST	CONSULT CONTRACTOR	
SPARE (AS INDICATED ON FLOOR PLAN)	15AMP	AS PER DWG	
LAP TOPPOINTS	15AMP	AS PER DWG	
KIDDIES PLAY TABLE	15AMP	AS PER DWG	
GEYSER	400KPA, 16AMP	IN CEILING	
MENU PANELS	CONSULT CONTRACTOR	IN CEILING	
TELEVISION SCREENS	15AMP	AS PER DWG	
HAND DRYER	15AMP	AS PER DWG	
BLUE LIGHT FLY TRAP	15AMP	AS PER DWG	
EXTRACTION FAN	CONSULT CONTRACTOR	IN CEILING	
RETURN AIR SYSTEM	CONSULT CONTRACTOR	IN CEILING	
AIR CONDITIONING	CONSULT CONTRACTOR	IN CEILING	
DISPLAY FRIDGE	15AMP	AS PER DWG	



- ### HEALTH NOTES
- ALL WATER PIPING & ELECTRICAL CONDUITING TO BE CONCEALED IN WALLS OR EMBEDDED IN THE FLOOR SURFACES.
 - ALL EQUIPMENT INCLUDING FRIDGE & FREEZERS TO BE FREESTANDING TYPE OR MOUNTED ON LEGS 250MM ABOVE FLOOR LEVEL.
 - FLOORS OF PREPARATION AREA, WASH-UP, SERVEY, TAKE AWAY & W.C.'S TO BE NON-SLIP CERAMIC TILES WITH 3MM EPOXY GROUTING GRADDED & DRAINED TO GULLY.
 - A SPACE OF 100MM TO BE ALLOWED BETWEEN WASH-UP SINKS & FITTINGS.
 - ALL WINDOW SILLS & TOPS OF WALLS NOT EXTENDED TO CEILING TO BE 45 DEGREES.
 - WALL SURFACES IN PREPARATION AREA, WASH-UP & SERVEY TO BE TILED TO FULL HEIGHT.
 - STORE ROOM TO BE EQUIPPED WITH FREE STANDING METAL SHELVES RAISED 250MM ABOVE FLOOR ON METAL LEGS.
 - A SUPPLY OF HOT & COLD WATER AT ALL WHB'S WASH-UP SINKS.
 - WALL SURFACES BEHIND & ABOVE ALL WHB'S TO BE COVERED WITH GLAZED TILES.
 - ALL TABLES & OTHER WORKING SURFACES TO BE OF STAINLESS STEEL WITH 100MM HIGH UPRIGHT.
 - POTATO PEELER TO BE SEPARATE UNIT WITH LEGS.
 - PREMISES TO BE MADE RODENT PROOF.
 - ALL WORK TO BE DONE IN A WORKMANLIKE MANNER & TO THE SATISFACTION OF THE HEALTH DEPARTMENT.
 - ALL ELECTRICAL CONNECTING CABLES TO BE PVC ENCASED.
 - MECHANICAL VENTILATION:
 - (i) HABITABLE AREAS: FRESH AIR TO BE SUPPLIED AT A RATE OF 17 SL/S/PERSON. AIR TO BE EVENLY DISTRIBUTED THROUGHOUT ALL HABITABLE AREAS AND THE VELOCITY IS NOT TO EXCEED 0.5M/S.
 - (ii) KITCHENS: FRESH AIR SUPPLIED AT A RATE OF 7.5 SL/S/PERSON (COMMERCIAL). AIR TO BE EVENLY DISTRIBUTED THROUGHOUT THE KITCHEN AND THE VELOCITY IS NOT TO EXCEED 0.5M/S.
 - (iii) WATER CLOSETS: AIR TO BE EXTRACTED TO EXTERNAL AT A RATE OF 20 SL/S/PERSON PER FITMENT (COMMERCIAL/INDUSTRIAL PREMISES).

- ### GENERAL NOTES
- EXTERNAL WALLS TO COMPLY WITH H.B.R. 110 WALL FOUNDATIONS TO BE MINIMUM 600 WIDE & 200 THICK.
 - CANOPY & EXTRACTION DUCT TO COMPLY WITH ALL LOCAL REGULATIONS.
 - ALL LIGHTING & VENTILATION TO COMPLY WITH PART 'O' OF THE NATIONAL BUILDING REGULATIONS.
 - 2 A.B.'S TO EACH URINAL & SHOWER.
 - 2 A.B.'S OVER EACH FAN-LESS DOOR OR WINDOW.

ENVIRONMENTAL HEALTH NOTE:

THE PREMISES MUST COMPLY WITH THE PROVISIONS OF THE TOBACCO PRODUCTS CONTROL AMENDMENT ACT, 1999

IMPORTANT NOTES

ALL DIMENSIONS TO BE CONFIRMED ON SITE PRIOR TO COMMENCEMENT OF CONTRACT.
DO NOT SCALE THIS DRAWING. USE FIGURED DIMENSIONS ONLY. ANY DISCREPANCIES TO BE BROUGHT UNDER THE ATTENTION OF DHQ DESIGNER & FAMOUS BRANDS PROJECT MANAGERS BEFORE COMMENCING WITH WORK. FAMOUS BRANDS WILL NOT BE HELD RESPONSIBLE FOR COST INCURRED.

SQUARE METERS

8.0H. %	40%
F.O.H. %	60%
TOTAL RESTAURANT INTERIOR AREA	317,400000
8.0H. AREA	137
F.O.H. AREA	180.4
PLAY WORLD AREA	0
EXTERIOR AREA	0



"COUNCIL SUBMISSION PLAN"
DHQ INTERIOR BRAND ARCHITECTS
LINCOLNWOOD OFFICE PARK BLOCK D,
WOODMEAD DR., WOODMEAD
TEL: 010 140 8820
E-MAIL: info@dhqa.co.za
DAVID COUSINS
SACAP: PAD 24749835

ELECTRICAL LEGEND

CENTRE HEIGHTS INDICATED ON DRAWING

DESCRIPTION	REVISION	DATE	BY
DISTRIBUTION BOARD	A	09.10.19	REduced PERCOLA BEAMS AND SLATS
15 AMP SINGLE PLUG - EACH PLUG TO BE WIRED WITH 4MM WIRE			REVISED TAKE AWAY BENCH
15 AMP DOUBLE PLUG - EACH PLUG TO BE WIRED WITH 4MM WIRE			REDUCED TILING AT TAKE AWAY
15 AMP SINGLE DEDICATED RED PLUG - EACH PLUG TO BE WIRED WITH NORSSE CABLE			REDUCED PLASTER RULES TO EXTERIOR
15 AMP DOUBLE DEDICATED RED PLUG - EACH PLUG TO BE WIRED WITH NORSSE CABLE			
30 AMP SINGLE PLUG			
ISOLATOR FOR SINGLE PHASE EQUIPMENT			
3 PHASE EQUIPMENT CONNECTION			
ISOLATOR FOR 3 PHASE EQUIPMENT			
LAPTOP POINT - PLEASE SEE CONSTRUCTION MANUAL			
TWO COMPARTMENT POWER SKIRTING (ONE DATA ONE POWER)			
STOP / START BUTTON FOR EXTRACTION CANOPY FAN - 20 AMP (TO BE RECESSED TIRE WITH CONTRACTOR IN DB)			
PABX NETWORK			
4 x 4 BOX FOR MICROS CHIP POINT OF SALE COMPUTERS IN POWER SKIRTING CLOSE TO SERVER			
TELEPHONE CONNECTION POINT			
ADSL TELEPHONE CONNECTION POINT FOR FAX & MODEM ONLY			
DATA POINT			
TV POINT ABOVE CEILING			
CONNECTION POINT FOR GEYSER			
CONNECTION FOR HEAT PUMP			
SIGNAGE POINT - ILLUMINATED ELECTRICAL CONNECTION			
MENU BOARDS - ILLUMINATED ELECTRICAL CONNECTION POINT FOR AIR-CONDITIONING			
CONNECTION POINT FOR COLDROOM			
CONNECTION POINT FOR FREEZER ROOM			
CONNECTION POINT & ISOLATOR FOR HAND DRYER			
LIGHT SWITCH			
EXTERNAL SPOTLIGHT			
CONDUIT FOR ELECTRICAL & DATA			

- ### ELECTRICAL NOTES
- DB SWITCHES TO BE NUMERICALLY CODED, TO RELATE BACK TO NUMERICAL CODES ON PLUG POINTS FOR EASE OF MAINTENANCE.
 - ALL ELECTRICAL PLUG/SWITCH COVERS IN PUBLIC AREAS TO BE AS PER LATEST WIMPY CONSTRUCTION MANUAL DRAWING TO BE READ IN CONJUNCTION WITH SPECIFICATION MANUAL.
 - SIGNAGE:
 - PROVIDE SIGNAGE CONNECTION POINTS TO FINAL POSITION/S OF SIGNAGE
 - LIGHT SWITCH:
 - ALL EXTERIOR SIGNAGE & EXTERIOR LIGHTING TO BE CONNECTED TO A DAY & NIGHT SWITCH
 - ALL NEON TO BE WIRED THROUGH A FIREMAN'S SWITCH
 - FIREMAN'S SWITCH POSITION TO BE CONFIRMED ON SITE.
 - GENERAL POWER:
 - THE APPOINTED ELECTRICAL CONTRACTOR IS TO BE SUITABLY QUALIFIED & TO POSSESS A WIREMAN'S LICENSE.
 - ALL WORK MUST BE DONE IN COMPLIANCE WITH THE LOCAL AUTHORITY & CURRENT LEGISLATION.
 - ELECTRICIAN MUST ENSURE THAT ALL WIRING & CABLES ARE TO BE NOT LESS THAN THE MINIMUM SANS SPECIFICATIONS.
 - ELECTRICIAN TO BALANCE ALL PHASES ON COMPLETION.
 - EARTH LEAKAGE PROTECTION - ONE FOR EACH PHASE ON POWER CIRCUITS.
 - ALL PIPES & SLEEVES TO BE CHASED INTO THE WALL PRIOR TO PLASTERING. ALL CABLES TO BE P.V.C. ENCLOSED.
 - ALL CONDUITS TO BE FITTED WITH DRAW WIRE BY ELECTRICAL CONTRACTOR.
 - ALL WORK TO COMPLY WITH LOCAL FIRE CHIEF. MATERIALS USED MUST COMPLY WITH S.A.B.S. STANDARDS.
 - ISSUE C.O.C BEFORE HANDOVER.
 - THE FOLLOWING LIGHT SWITCHES TO BE PLACED IN ACCORDANCE WITH THE ROOM NAMES.
 - OFFICE = 1 X SWITCH
 - FOOD STORE = 1 X SWITCH
 - STAFF CHANGE ROOMS = 1 X SWITCH

ELECTRICAL LAYOUT
SCALE 1:50



Famous Brands Design Studio Trading As DHQ
Lincolnwood Office Park
Building D - Ground Floor
6-8 Woodlands Drive, Woodmead
TEL: 010 140 8820
E-Mail: info@dhqa.co.za



PROJECT: INTERNAL SHOP FITTING & ALTERATIONS TO WIMPY PRETORIUSKOP REVAMP

ADDRESS:
ERF NUMBER:
PRETORIUS CAMP
GERGER NATIONAL PARK, 1200
MUPMAMALANGA

DESCRIPTION - WORKING DRAWING

ELECTRICAL LAYOUT

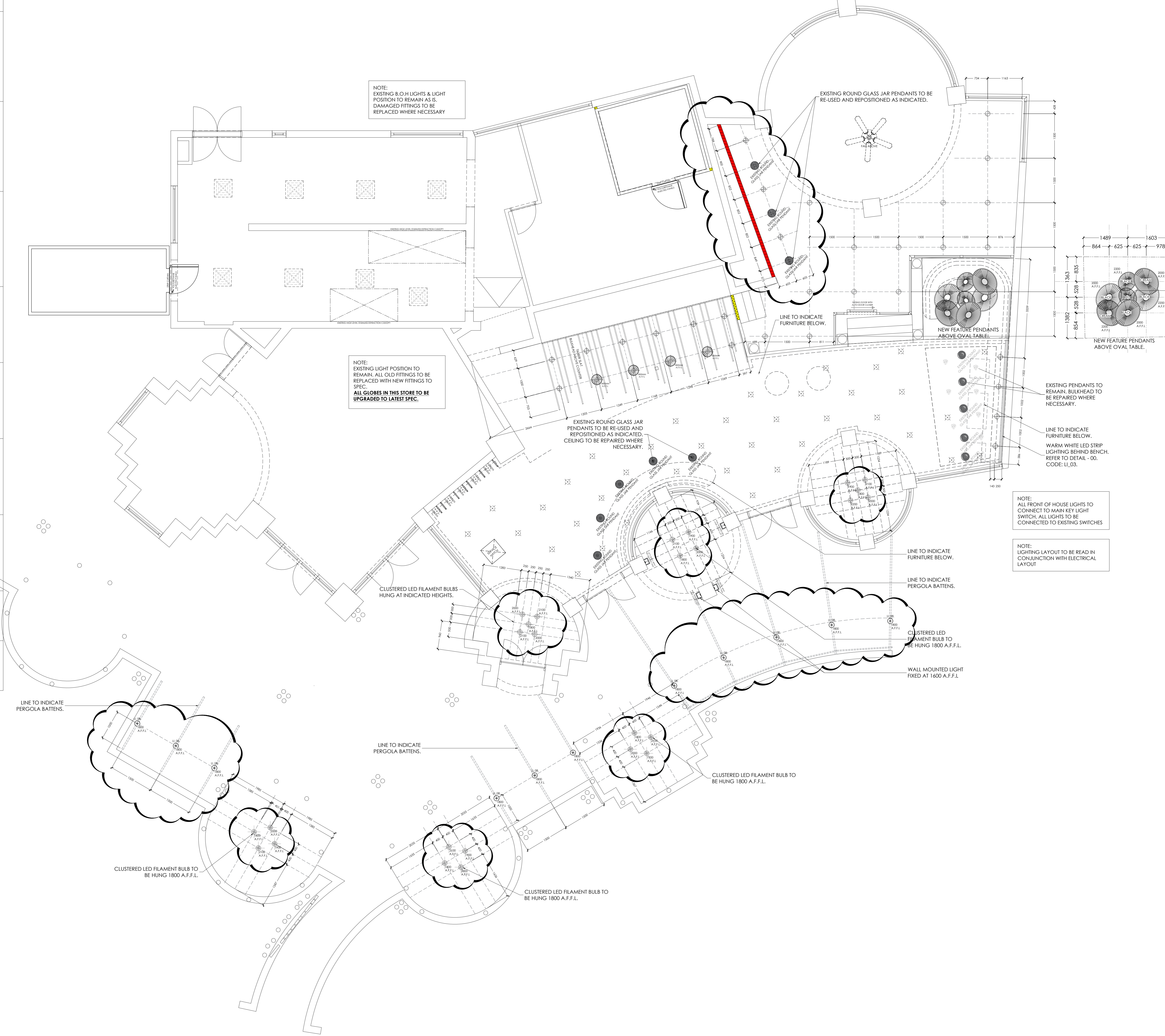
DRAWING NO. W - 110401 - MP - K5

DO NOT SCALE, USED FIGURED DIMENSIONS. COPYRIGHT RESERVED

F.O.H LIGHTING SCHEDULE	
- ALL VENTILATION TO COMPLY WITH NBR/SANS 10400 PART 1 TABLE 2.	
- TOILET FANS TO BE DUCTED TO OUTSIDE.	
- ALL CUT-OUTS IN CEILING FOR LIGHTING / AIR-CONDITIONING BY CEILING CONTRACTOR.	
- ELECTRICIAN TO CONNECT ALL EQUIPMENT.	
- ELECTRICIAN TO DETERMINE IF NEON SIGNAGE IS TO BE CONNECTED TO A CENTRAL FREEMANS SWITCH. IN THE CENTRE, FREEMANS SWITCH TO ALL NEON.	
- DESIGN AND POSITION OF AIR-CONDITIONING AND VENTILATION DIFFUSERS BY MECHANICAL ENGINEER IN ACCORDANCE WITH LIGHTING LAYOUT.	
- SPRINKLER LAYOUT TO BE DONE BY SPECIALIST - TO BE FORWARDED TO FAMOUS BRANDS FOR APPROVAL.	
- SPEAKER LAYOUT BY SPECIALIST.	
- CCTV TO BE INSTALLED BY SPECIALIST.	
- DRAWING TO BE READ IN CONJUNCTION WITH SPECIFICATION MANUAL.	
- THIS PLAN TO BE READ IN CONJUNCTION WITH SERVICES PLAN. REFER TO SERVICES LAYOUT, WHERE POSSIBLE GROUP LIGHT SWITCHES UNDERNEATH EACH OTHER. ELECTRICIAN TO SET UP MEETING WITH MICROS REGARDING P.O.S SYSTEM.	
ALLOW FOR EMERGENCY LIGHTING AS PER FIRE CONSULTANT SPEC. BLOCKED IN LIGHTS INDICATED EMERGENCY LIGHTS	

EXISTING F.O.H LIGHTING SCHEDULE	
	DOWN LIGHT FITTING. GLOBE TO BE UPGRADED TO LATEST SPEC. 43
	SUPPLY AIR DIFFUSER TO BE SPRAYED TO MATCH CEILING OR BULKHEAD FINISH RESPECTIVELY 8
	AMBER GLASS PENDANT - BELL JAR 7
	AMBER GLASS PENDANT - ROUND 13

	GENERAL DOWN LIGHT NON- DIMMABLE. (FOR GENERAL DAY TRADE STORES) CODE: LED/DL/D22/WHITE TYPE: LED, GU10, TILT ADJUSTABLE TRIM COLOUR: WHITE POWER: 5.7WATT DRIVER: 230V SIZE: 74MM (CUT OUT HOLE SIZE) COLOUR: 3000K WARM WHITE SPACING: 1.2M APART @ 2.7M MOUNTING HEIGHT GUARANTEE: 2 YEARS @ 14 HOURS A DAY 3 YEARS @ 14 HOURS A DAY (WITH A SURGE FILTER INSTALLED IN CIRCUIT)	29
	BARISTA PENDANT - RED (CREME TILE STORE) SIZE: 450MM DIAMETER CODE: PEN06/WB9/27018E - RED LAMP SPEC: E27 LED 5-7W WARM WHITE LAMP SPEC: SIZE: 5-7 WATT 60MM DIA COLOUR: WARM WHITE POWER (WATT): 5-7W VOLT: 240V E27 LED TYPE: SMD COLOUR TEMPERATURE: WARM WHITE COLOUR RENDERING %: RA 80 GUARANTEE: 2 YEARS AT 8 HRS PER DAY	4
	LED FILAMENT BULB COMBINATION: 1- CODE: HA-LB145-F5-NON DIM 2- CODE: HA-LB125-F5-NON DIM 3- CODE: HA-LB40-T4-NON DIM 4- CODE: HA-ST64-F5-NON DIM TWISTED BLACK FABRIC CABLE EACH CORD TO BE THREADED THROUGH CUSTOM BLACK AND COLOURED TUBING. 20% NO PIPE, 30% 400mm BENT PIPE, 20% STRAIGHT FULL PIPE & 30% FULL BENT PIPE.	26
	BLACK 850MM WIRE BESPOKE LIGHTING PENDANT.	4
	RED 620MM WIRE BESPOKE LIGHTING PENDANT.	1
	CREAM 850MM WIRE BESPOKE LIGHTING PENDANT.	2
	WALL MOUNTED LIGHT WITH BUILT-IN LED LAMP CODE: SP01 4549 - 1-3030 DIMENSIONS 210MM X 140MM COLOUR TO BE BLACK COATED	4
	BLACK SPUN METAL PENDANT LIGHT DIAMETER: 340MM CODE: H13 547G-340MM	11
	TRIDENT NO LIGHT 60" (152) BLADE SPAN 3 SLID WOOD BLADE SATIN NICKLE METAL PARTS NO LIGHT 6 SPEEDS REMOTE CONTROL 30 WATT MAX CONSUMPTION	1



HEALTH NOTES	
1.	ALL WATER PIPING & ELECTRICAL CONDUCTING TO BE CONCEALED IN WALLS OR EMBEDDED IN THE FLOOR SURFACES.
2.	ALL EQUIPMENT INCLUDING FRIDGE & FREEZERS TO BE FREESTAL TYPE OR MOUNTED ON LEGS 250MM ABOVE FLOOR LEVEL.
3.	FLOORS OF PREPARATION AREA, WASH-UP, SERVERY, TAKE AWAY & W.C.'S TO BE NON-SLIP CERAMIC TILES WITH 3MM EPOXY GROUTING GRADED & DRAINED TO GULLY.
4.	A SPACE OF 100MM TO BE ALLOWED BETWEEN WASH-UP SINKS & FITTINGS.
5.	ALL WINDOW SILLS & TOPS OF WALLS NOT EXTENDED TO CEILING TO BE 45 DEGREES.
6.	WALL SURFACES IN PREPARATION AREA, WASH-UP & SERVERY TO BE TILED TO FULL HEIGHT.
7.	STORE ROOM TO BE EQUIPPED WITH FREE STANDING METAL SHELVES RAISED 250MM ABOVE FLOOR ON METAL LEGS.
8.	A SUPPLY OF HOT & COLD WATER AT ALL WHB'S WASH-UP SINKS.
9.	WALL SURFACES BEHIND & ABOVE ALL WHB'S TO BE COVERED WITH GLAZED TILES.
10.	ALL TABLES & OTHER WORKING SURFACES TO BE OF STAINLESS STEEL WITH 100MM HIGH UPRIGHT.
11.	POTATO PEELER TO BE SEPARATE UNIT WITH LEGS.
12.	PREMISES TO BE MADE RODENT PROOF.
13.	ALL WORK TO BE DONE IN A WORKMANLIKE MANNER & TO THE SATISFACTION OF THE HEALTH DEPARTMENT.
14.	ALL ELECTRICAL CONNECTING CABLES TO BE PVC ENCASED.
15.	MECHANICAL VENTILATION:
(i)	HABITABLE AREAS: FRESH AIR TO BE SUPPLIED AT A RATE OF 17 SL/S/PERSON. AIR TO BE EVENLY DISTRIBUTED THROUGHOUT ALL HABITABLE AREAS AND THE VELOCITY IS NOT TO EXCEED 0.5M/S.
(ii)	KITCHENS: FRESH AIR SUPPLIED AT A RATE OF 7.5 SL/S/PERSON (COMMERCIAL). AIR TO BE EVENLY DISTRIBUTED THROUGHOUT THE KITCHEN AND THE VELOCITY IS NOT TO EXCEED 0.5M/S.
(iii)	WATER CLOSETS: AIR TO BE EXTRACTED TO EXTERNAL AT A RATE OF 20 SL/S/PERSON PER FITMENT (COMMERCIAL/INDUSTRIAL PREMISES).

GENERAL NOTES	
1.	EXTERNAL WALLS TO COMPLY WITH N.B.R. 110 WALL FOUNDATIONS TO BE MINIMUM 600 WIDE & 200 THICK.
2.	CANOPY & EXTRACTION DUCT TO COMPLY WITH ALL LOCAL REGULATIONS.
3.	ALL LIGHTING & VENTILATION TO COMPLY WITH PART 'O' OF THE NATIONAL BUILDING REGULATIONS.
4.	2 A.B.'S TO EACH URINAL & SHOWER.
5.	2 A.B.'S OVER EACH FAN-LESS DOOR OR WINDOW.

ENVIRONMENTAL HEALTH NOTE:	
THE PREMISES MUST COMPLY WITH THE PROVISIONS OF THE TOBACCO PRODUCTS CONTROL AMENDMENT ACT, 1999	

IMPORTANT NOTES	
ALL DIMENSIONS TO BE CONFIRMED ON SITE PRIOR TO COMMENCEMENT OF CONTRACT.	
DO NOT SCALE THIS DRAWING USE FIGURED DIMENSIONS ONLY. ANY DISCREPANCIES TO BE BROUGHT UNDER THE ATTENTION OF DHD DESIGNER & FAMOUS BRANDS PROJECT MANAGERS BEFORE COMMENCING WITH WORK. FAMOUS BRANDS WILL NOT BE HELD RESPONSIBLE FOR COST INCURRED	

SQUARE METERS	
8.0H. %	40%
F.O.H. %	40%
TOTAL RESTAURANT INTERIOR AREA	317,400,000
8.0H AREA	137
F.O.H AREA	180.4
PLAY WORLD AREA	0
EXTERIOR AREA	0

COUNCIL SUBMISSION PLAN

DHO INTERIOR BRAND ARCHITECTS
 LINCOLNWOOD OFFICE PARK BLOCK D,
 WOODMEAD DR, WOODMEAD
 TEL: 010 140 8520

DAVID COUSINS
 SACAP: PAD 24749835

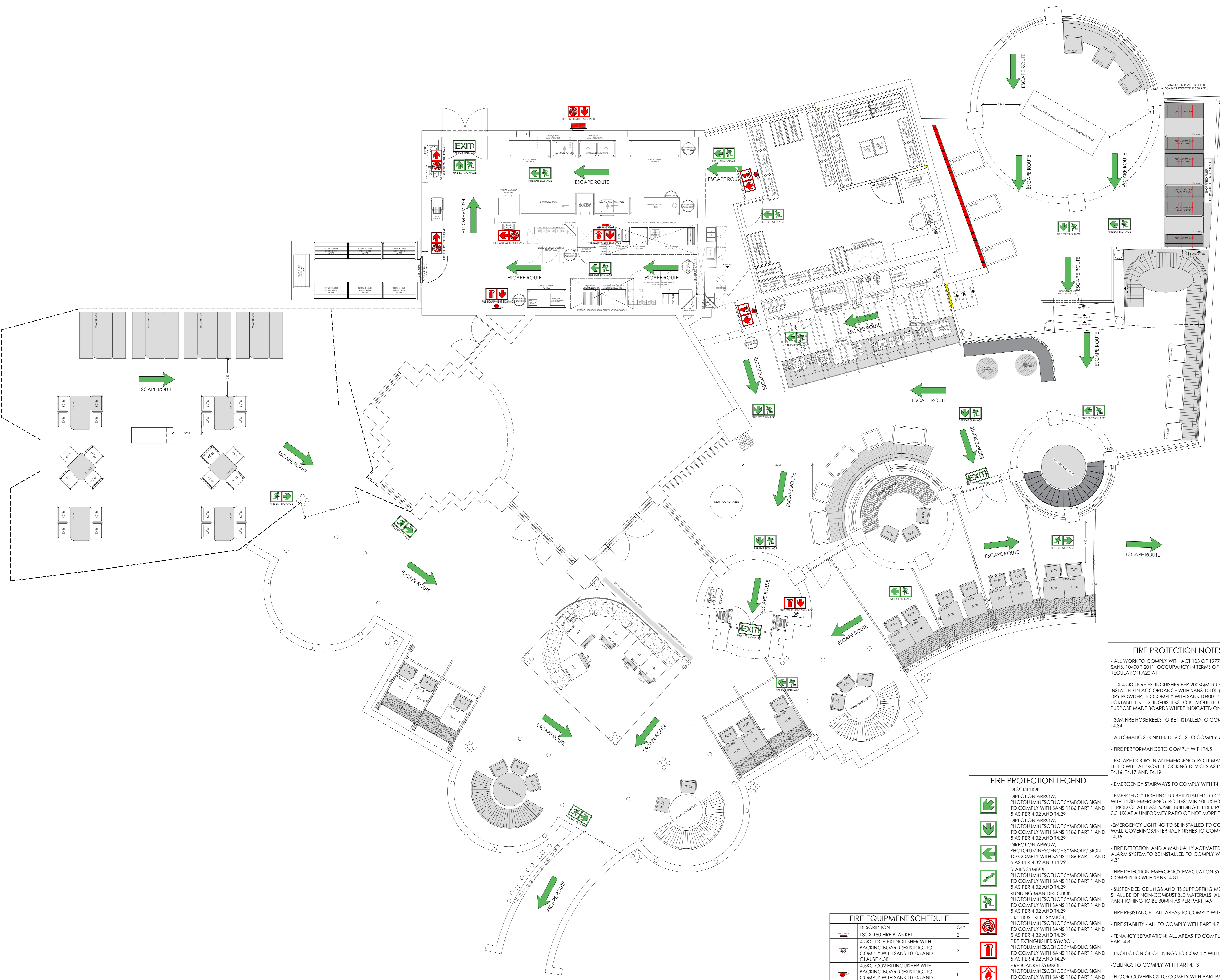
REV	DATE	DETAILS	NAME
A	09.10.19	REDUCED PERGOLA BEAMS AND SLATS REMOVED COLUMN CLADDING REVISED TAKE AWAY BENCH REDUCED TILING AT TAKE AWAY REDUCED FILAMENT BULBS TO EXTERIOR	

Interior Brand Architects
 Famous Brands Design Studio Trading As DHO
 Lincolnwood Office Park
 Building D - Ground Floor
 6-8 Woodlands Drive, Woodmead
 TEL: 010 140 8520
 E-Mail: info@dhoqa.co.za

BRAND TEMPLATE 0007

PROJECT	INTERNAL SHOP FITTING & ALTERATIONS TO WIMPY PRETORIUSKOP REVAMP
ADDRESS	ERF NUMBER: PRETORIUS CAMP KRUGER NATIONAL PARK, 1200 MPUMALANGA
DESCRIPTION	WORKING DRAWING LIGHTING LAYOUT
DRAWING NO.	W - 110401 - MP - K7
DATE	04.03.2019
SCALE	1:50
REVISION	A
DO NOT SCALE, USED FIGURED DIMENSIONS COPYRIGHT RESERVED	

LIGHTING LAYOUT
SCALE 1:50



FIRE PROTECTION LAYOUT
SCALE 1:50

FIRE EQUIPMENT SCHEDULE		
DESCRIPTION	QTY	
180 X 180 FIRE BLANKET	2	
4.5KG DCP EXTINGUISHER WITH BACKING BOARD (EXISTING) TO COMPLY WITH SANS 10105 AND CLAUSE 4.38	2	
4.5KG CO2 EXTINGUISHER WITH BACKING BOARD (EXISTING) TO COMPLY WITH SANS 10105 AND CLAUSE 4.38	1	
30M STANDARD FIRE HOSE REEL (EXISTING) TO COMPLY WITH SANS 10105 AND CLAUSE 4.38	0	
30M STANDARD FIRE HOSE REEL WITH 2X 4.5KG DCP EXTINGUISHER UNDERNEATH TO COMPLY WITH SANS 543 AND 4.34, 10105 AND CLAUSE 4.38 RESPECTIVELY	0	

FIRE PROTECTION LEGEND	
	DIRECTION ARROW, PHOTOLUMINESCENCE SYMBOLIC SIGN TO COMPLY WITH SANS 1186 PART 1 AND 5 AS PER 4.32 AND 14.29
	DIRECTION ARROW, PHOTOLUMINESCENCE SYMBOLIC SIGN TO COMPLY WITH SANS 1186 PART 1 AND 5 AS PER 4.32 AND 14.29
	DIRECTION ARROW, PHOTOLUMINESCENCE SYMBOLIC SIGN TO COMPLY WITH SANS 1186 PART 1 AND 5 AS PER 4.32 AND 14.29
	STAIRS SYMBOL, PHOTOLUMINESCENCE SYMBOLIC SIGN TO COMPLY WITH SANS 1186 PART 1 AND 5 AS PER 4.32 AND 14.29
	RUNNING MAN DIRECTION, PHOTOLUMINESCENCE SYMBOLIC SIGN TO COMPLY WITH SANS 1186 PART 1 AND 5 AS PER 4.32 AND 14.29
	FIRE HOSE REEL SYMBOL, PHOTOLUMINESCENCE SYMBOLIC SIGN TO COMPLY WITH SANS 1186 PART 1 AND 5 AS PER 4.32 AND 14.29
	FIRE EXTINGUISHER SYMBOL, PHOTOLUMINESCENCE SYMBOLIC SIGN TO COMPLY WITH SANS 1186 PART 1 AND 5 AS PER 4.32 AND 14.29
	FIRE BLANKET SYMBOL, PHOTOLUMINESCENCE SYMBOLIC SIGN TO COMPLY WITH SANS 1186 PART 1 AND 5 AS PER 4.32 AND 14.29
	FIRE HYDRANT SYMBOL, PHOTOLUMINESCENCE SYMBOLIC SIGN TO COMPLY WITH SANS 1186 PART 1 AND 5 AS PER 4.32 AND 14.29
	EXIT SYMBOL, PHOTOLUMINESCENCE SYMBOLIC SIGN TO COMPLY WITH SANS 1186 PART 1 AND 5 AS PER 4.32 AND 14.29

FIRE PROTECTION NOTES

- ALL WORK TO COMPLY WITH ACT 103 OF 1977 AND SANS 10400/2011, OCCUPANCY IN TERMS OF REGULATION A20(A)
- 1 X 4.5KG FIRE EXTINGUISHER PER 200SQM TO BE INSTALLED IN ACCORDANCE WITH SANS 10105 (2X 4.5KG DRY POWDER) TO COMPLY WITH SANS 10400 T4.38. PORTABLE FIRE EXTINGUISHERS TO BE MOUNTED ON PURPOSE MADE BOARDS WHERE INDICATED ON THE PLAN.
- 30M FIRE HOSE REELS TO BE INSTALLED TO COMPLY WITH T4.34
- AUTOMATIC SPRINKLER DEVICES TO COMPLY WITH T4.36
- FIRE PERFORMANCE TO COMPLY WITH T4.5
- ESCAPE DOORS IN AN EMERGENCY ROUTE MAY ONLY BE FITTED WITH APPROVED LOCKING DEVICES AS PER CLAUSE T4.16, T4.17 AND T4.19
- EMERGENCY STAIRWAYS TO COMPLY WITH T4.23
- EMERGENCY LIGHTING TO BE INSTALLED TO COMPLY WITH T4.30. EMERGENCY ROUTES: MIN 50LUX FOR A PERIOD OF AT LEAST 60MIN BUILDING FEEDER ROUTES MIN 0.8LUX AT A UNIFORM RATIO OF NOT MORE THAN 40:1
- EMERGENCY LIGHTING TO BE INSTALLED TO COMPLY WITH T4.15
- FIRE DETECTION AND A MANUALLY ACTIVATED AUDIBLE ALARM SYSTEM TO BE INSTALLED TO COMPLY WITH SANS 4.31
- FIRE DETECTION EMERGENCY EVACUATION SYSTEM COMPLYING WITH SANS 14.31
- SUSPENDED CEILINGS AND ITS SUPPORTING MEMBERS SHALL BE OF NON-COMBUSTIBLE MATERIALS. ALL INTERNAL PARTITIONING TO BE 30MIN AS PER PART T4.9
- FIRE RESISTANCE - ALL AREAS TO COMPLY WITH PART 4.6
- FIRE STABILITY - ALL TO COMPLY WITH PART 4.7
- TENANCY SEPARATION: ALL AREAS TO COMPLY WITH PART 4.8
- PROTECTION OF OPENINGS TO COMPLY WITH PART 4.1
- CEILINGS TO COMPLY WITH PART 4.13
- FLOOR COVERINGS TO COMPLY WITH PART PART 4.14-CLASS 3
- EMERGENCY ROUTE TO COMPLY WITH PART 4.19
- MARKETING AND SIGN POSTING TO COMPLY WITH PART 4.29
- HYDRANTS TO COMPLY WITH PART 4.36

HEALTH NOTES

1. ALL WATER PIPING & ELECTRICAL CONDUCTING TO BE CONCEALED IN WALLS OR EMBEDDED IN THE FLOOR SURFACES.
2. ALL EQUIPMENT INCLUDING FRIDGE & FREEZERS TO BE FREESTAL TYPE OR MOUNTED ON LEGS 250MM ABOVE FLOOR LEVEL.
3. FLOORS OF PREPARATION AREA, WASH-UP, SERVEY, TAKE AWAY & W.C.'S TO BE NON-SLIP CERAMIC TILES WITH 3MM EPOXY GROUTING GRADED & DRAINED TO GULLY.
4. A SPACE OF 100MM TO BE ALLOWED BETWEEN WASH-UP SINKS & FITTINGS.
5. ALL WINDOW SILLS & TOPS OF WALLS NOT EXTENDED TO CEILING TO BE 45 DEGREES.
6. WALL SURFACES IN PREPARATION AREA; WASH-UP & SERVEY TO BE TILED TO FULL HEIGHT.
7. STORE ROOM TO BE EQUIPPED WITH FREE STANDING METAL SHELVES RAISED 250MM ABOVE FLOOR ON METAL LEGS.
8. A SUPPLY OF HOT & COLD WATER AT ALL WHB'S WASH-UP SINKS.
9. WALL SURFACES BEHIND & ABOVE ALL WHB'S TO BE COVERED WITH GLAZED TILES.
10. ALL TABLES & OTHER WORKING SURFACES TO BE OF STAINLESS STEEL WITH 100MM HIGH UPRIGHT.
11. POTATO FREEZERS TO BE SEPARATE UNIT WITH LEGS.
12. PREMISES TO BE MADE RODENT PROOF.
13. ALL WORK TO BE DONE IN A WORKMANLIKE MANNER & TO THE SATISFACTION OF THE HEALTH DEPARTMENT.
14. ALL ELECTRICAL CONNECTING CABLES TO BE PVC ENCASED.
15. MECHANICAL VENTILATION:
 - (i) HABITABLE AREAS: FRESH AIR TO BE SUPPLIED AT A RATE OF 17 SL/S/PERSON. AIR TO BE EVENLY DISTRIBUTED THROUGHOUT ALL HABITABLE AREAS AND THE VELOCITY IS NOT TO EXCEED 0.5M/S.
 - (ii) KITCHENS: FRESH AIR SUPPLIED AT A RATE OF 7.5 SL/S/PERSON (COMMERCIAL). AIR TO BE EVENLY DISTRIBUTED THROUGHOUT THE KITCHEN AND THE VELOCITY IS NOT TO EXCEED 0.5M/S.
 - (iii) WATER CLOSETS: AIR TO BE EXTRACTED TO EXTERNAL AT A RATE OF 20 SL/S/PERSON PER FITMENT (COMMERCIAL/INDUSTRIAL PREMISES).

GENERAL NOTES

1. EXTERNAL WALLS TO COMPLY WITH N.B.R. 110
2. WALL FOUNDATIONS TO BE MINIMUM 600 WIDE & 200 THICK.
3. CANOPY & EXTRACTION DUCT TO COMPLY WITH ALL LOCAL REGULATIONS
4. ALL LIGHTING & VENTILATION TO COMPLY WITH PART 'D' OF THE NATIONAL BUILDING REGULATIONS.
5. 2 A.B.'S TO EACH URINAL & SHOWER.
6. 2 A.B.'S OVER EACH FAN-LESS DOOR OR WINDOW.

ENVIRONMENTAL HEALTH NOTE:

THE PREMISES MUST COMPLY WITH THE PROVISIONS OF THE TOBACCO PRODUCTS CONTROL AMENDMENT ACT, 1999

IMPORTANT NOTES

ALL DIMENSIONS TO BE CONFIRMED ON SITE PRIOR TO COMMENCEMENT OF CONTRACT. DO NOT SCALE THIS DRAWING. USE FIGURED DIMENSIONS ONLY. ANY DISCREPANCIES TO BE BROUGHT UNDER THE ATTENTION OF DHO DESIGNER & FAMOUS BRANDS PROJECT MANAGERS BEFORE COMMENCING WITH WORK. FAMOUS BRANDS WILL NOT BE HELD RESPONSIBLE FOR COST INCURRED.

SQUARE METERS

B.O.H. %	40%
F.O.H. %	40%
TOTAL RESTAURANT INTERIOR AREA	317,400,000
B.O.H. AREA	137
F.O.H. AREA	180.4
PLAY WORLD AREA	0
EXTERIOR AREA	0

APPROVED

DAVID COUSINS
SACAP: PAD 24749835

DHO
INTERIOR BRAND ARCHITECTS
LINCOLNWOOD OFFICE PARK BLOCK D,
WOODMEAD DR., WOODMEAD
TEL: 010 160 8820
E-MAIL: info@dhoqa.co.za

BRAND TEMPLATE 0007

WIMPY

PROJECT: INTERNAL SHOP FITTING & ALTERATIONS TO WIMPY PRETORIUSKOP REVAMP

ADDRESS:
ERF NUMBER:
PRETORIUS CAMP
KRUGER NATIONAL PARK, 1200
MPUMALANGA

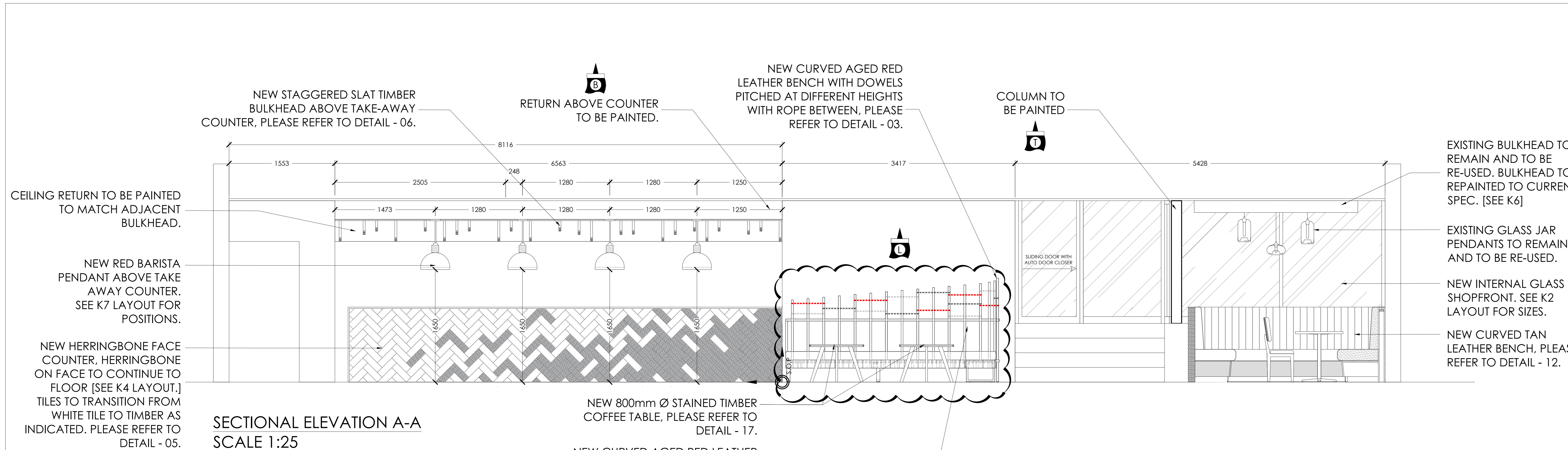
DESCRIPTION - WORKING DRAWING

FIRE PROTECTION LAYOUT

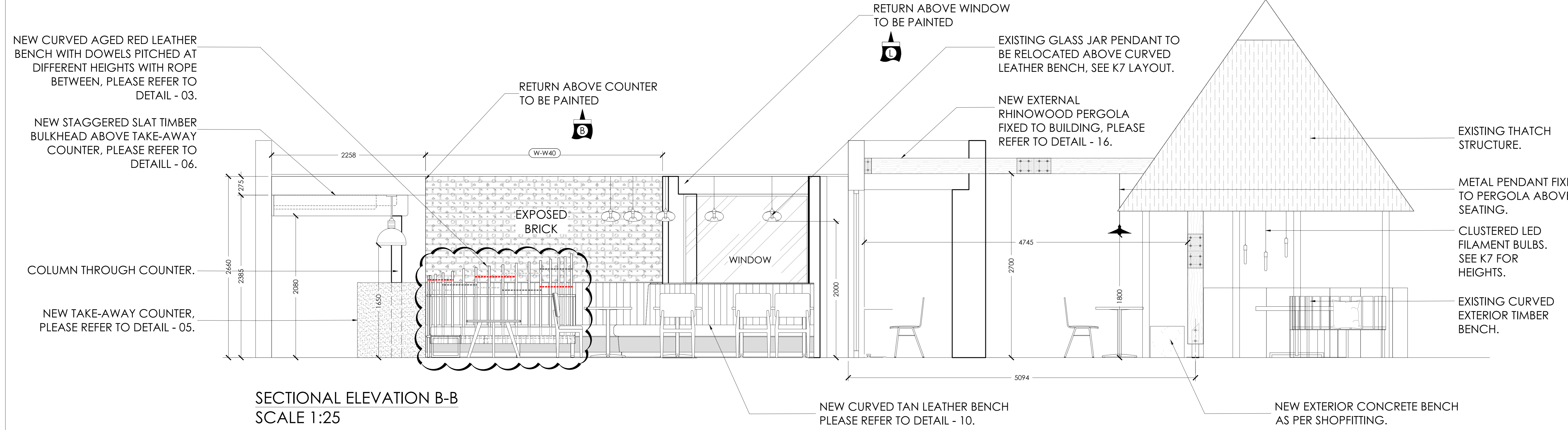
DRAWING NO. W - 110401 - MP - K8

DATE: 04.03.2019
SCALE: 1:50
REVISION: A

DO NOT SCALE, USE FIGURED DIMENSIONS. COPYRIGHT RESERVED



SECTIONAL ELEVATION A-A
SCALE 1:25



SECTIONAL ELEVATION B-B
SCALE 1:25

EXISTING BULKHEAD TO REMAIN AND TO BE RE-USED. BULKHEAD TO BE REPAINTED TO CURRENT SPEC. [SEE K6]

EXISTING GLASS JAR PENDANTS TO REMAIN AND TO BE RE-USED.

NEW INTERNAL GLASS SHOPFRONT. SEE K2 LAYOUT FOR SIZES.

NEW CURVED TAN LEATHER BENCH. PLEASE REFER TO DETAIL - 12.

EXISTING THATCH STRUCTURE.

METAL PENDANT FIXED TO PERGOLA ABOVE SEATING.

CLUSTERED LED FILAMENT BULBS. SEE K7 FOR HEIGHTS.

EXISTING CURVED EXTERIOR TIMBER BENCH.

HEALTH NOTES

1. ALL WATER PIPING & ELECTRICAL CONDUITING TO BE CONCEALED IN WALLS OR EMBEDDED IN THE FLOOR SURFACES.
2. ALL EQUIPMENT INCLUDING FRIDGE & FREEZERS TO BE FRESTAL TYPE OR MOUNTED ON LEGS 250MM ABOVE FLOOR LEVEL.
3. FLOORS OF PREPARATION AREA, WASH-UP, SERVEY, TAKE AWAY & W.C.'S TO BE NON-SLIP CERAMIC TILES WITH 3MM EPOXY GROUTING GRADED & DRAINED TO GULLY.
4. A SPACE OF 100MM TO BE ALLOWED BETWEEN WASH-UP SINKS & FITTINGS.
5. ALL WINDOW SILLS & TOPS OF WALLS NOT EXTENDED TO CEILING TO BE 45 DEGREE.
6. WALL SURFACES IN PREPARATION AREA, WASH-UP & SERVEY TO BE TILED TO FULL HEIGHT.
7. STORE ROOM TO BE EQUIPPED WITH FREE STANDING METAL SHELVES RAISED 250MM ABOVE FLOOR ON METAL LEGS.
8. A SUPPLY OF HOT & COLD WATER AT ALL WHB'S WASH-UP SINKS.
9. WALL SURFACES BEHIND & ABOVE ALL WHB'S TO BE COVERED WITH GLAZED TILES.
10. ALL TABLES & OTHER WORKING SURFACES TO BE OF STAINLESS STEEL WITH 100MM HIGH UPRIGHT.
11. POTATO PEELER TO BE SEPARATE UNIT WITH LEGS.
12. PREMISES TO BE MADE RODENT PROOF.
13. ALL WORK TO BE DONE IN A WORKMANLIKE MANNER & TO THE SATISFACTION OF THE HEALTH DEPARTMENT.
14. ALL ELECTRICAL CONNECTIONS TO BE FACE ENCASED.
15. MECHANICAL VENTILATION:
 - (i) HABITABLE AREAS: FRESH AIR TO BE SUPPLIED AT A RATE OF 17 SL/S/PERSON. AIR TO BE EVENLY DISTRIBUTED THROUGHOUT ALL HABITABLE AREAS AND THE VELOCITY IS NOT TO EXCEED 0.5M/S.
 - (ii) KITCHENS: FRESH AIR SUPPLIED AT A RATE OF 7.5 SL/S/PERSON (COMMERCIAL). AIR TO BE EVENLY DISTRIBUTED THROUGHOUT THE KITCHEN AND THE VELOCITY IS NOT TO EXCEED 0.5M/S.
 - (iii) WATER CLOSETS: AIR TO BE EXTRACTED TO EXTERNAL AT A RATE OF 20 SL/S/PERSON PER FITMENT (COMMERCIAL/INDUSTRIAL PREMISES).

GENERAL NOTES

1. EXTERNAL WALLS TO COMPLY WITH N.B.R. 110 WALL FOUNDATIONS TO BE MINIMUM 600 WIDE & 200 THICK.
2. CANOPY & EXTRACTION DUCT TO COMPLY WITH ALL LOCAL REGULATIONS.
3. ALL LIGHTING & VENTILATION TO COMPLY WITH PART 'D' OF THE NATIONAL BUILDING REGULATIONS.
4. 2 A.B.'S TO EACH URINAL & SHOWER.
5. 2 A.B.'S OVER EACH FAN-LESS DOOR OR WINDOW.

ENVIRONMENTAL HEALTH NOTE:

THE PREMISES MUST COMPLY WITH THE PROVISIONS OF THE TOBACCO PRODUCTS CONTROL AMENDMENT ACT, 1999

IMPORTANT NOTES

ALL DIMENSIONS TO BE CONFIRMED ON SITE PRIOR TO COMMENCEMENT OF CONTRACT. DO NOT SCALE THIS DRAWING. USE FIGURED DIMENSIONS ONLY. ANY DISCREPANCIES TO BE BROUGHT UNDER THE ATTENTION OF DHO DESIGNER & FAMOUS BRANDS PROJECT MANAGERS BEFORE COMMENCING WITH WORK. FAMOUS BRANDS WILL NOT BE HELD RESPONSIBLE FOR COST INCURRED.

SQUARE METERS

8.0H. %	40%
F.O.H. %	60%
TOTAL RESTAURANT INTERIOR AREA	317.400000
8.0H AREA	137
F.O.H AREA	180.4
PLAY WORLD AREA	0
EXTERIOR AREA	0



"COUNCIL SUBMISSION PLAN"
DHO INTERIOR BRAND ARCHITECTS
LINCOLNWOOD OFFICE PARK BLOCK D,
WOODMEAD DR, WOODMEAD
TEL: 010 140 8500

DAVID COUSINS
SACAP: PAD 24749835

REV	DATE	DETAILS	NAME
A	09/10/19	REDUCED PERGOLA BEAMS AND SLATS	TL
		REMOVED COLUMN CLADDING	
		REVISED TAKE-AWAY BENCH	
		REDUCED TILING AT TAKE-AWAY	
		REDUCED FILAMENT BULBS TO EXTERIOR	



Famous Brands Design Studio Trading As DHO
Lincolnwood Office Park
Building D - Ground Floor
6-8 Woodlands Drive, Woodmead
TEL: 010 140 8500
E-Mail: info@dhoqa.co.za



PROJECT: INTERNAL SHOP FITTING & ALTERATIONS TO WIMPY PRETORIUSKOP REVAMP

ADDRESS:
ERF NUMBER:
PRETORIUS CAMP
KRUGER NATIONAL PARK, 1200
MPUMALANGA

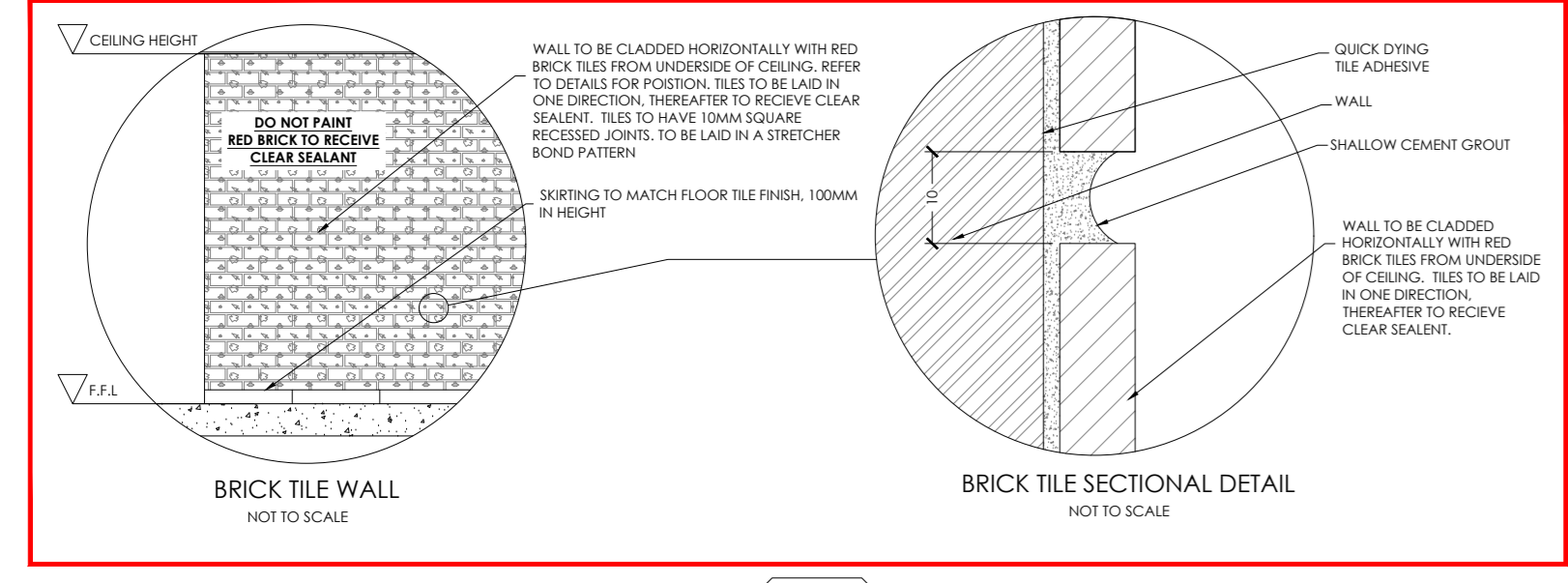
DESCRIPTION - WORKING DRAWING
ELEVATIONS LAYOUT

DRAWING NO.
W - 110401 - MP - D1.1

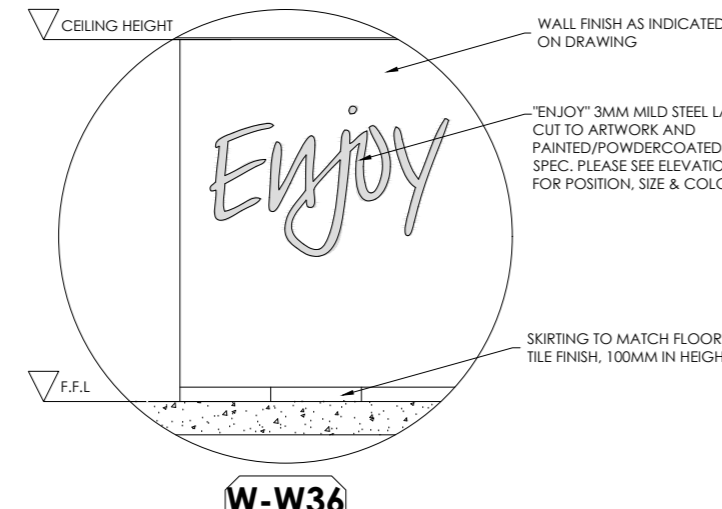
DO NOT SCALE. USED FIGURED DIMENSIONS. COPYRIGHT RESERVED

WALL	PAINT SCHEDULE
1	ACRYLIC PVA PAINT DULUX 30TY 517 098 COLOUR: LOASTY GREY
2	ACRYLIC PVA PAINT DULUX 40TY 20V 081 COLOUR: FLAUTEI GREY
3	ACRYLIC PVA PAINT DULUX 00NN 20V 000 COLOUR: GRIMMYS GREY
4	OIL BASED ENAMEL WHITE EGGSHELL

ENJOY LASER CUT DETAIL
"ENJOY" 3MM MILD STEEL LASER CUT TO ARTWORK AND PAINTED/POWDERCOATED CHARCOAL: RAL 7012 BASALT GREY. PANTONE. PLEASE SEE ELEVATIONS FOR POSITION AND SIZE.



W-W40
TILED BRICK WALL PAINTED TO SPEC



W-W36
LASER CUT "ENJOY"
NOT TO SCALE

FLOOR FINISHES SCHEDULE		HEALTH NOTES	
	MATTE CREAM FLOOR TILE: 100MM X 300MM COCO MI USO, CREAM FINISH FLOOR TILE. SUPPLIER EX: TILE AFRICA. TO BE LAID IN HERRINGBONE PATTERN.	5.4	30%
	TIMBER PLANK FLOOR TILE: 100MM X 300MM AMAZON OAK, OAK FINISH FLOOR TILE. SUPPLIER EX: TILE AFRICA. TO BE LAID IN HERRINGBONE PATTERN.	10.2	30%

1. ALL WATER PIPING & ELECTRICAL CONDUCTING TO BE CONCEALED IN WALLS OR EMBEDDED IN THE FLOOR SURFACES.
2. ALL EQUIPMENT INCLUDING FRIDGE & FREEZERS TO BE STAINLESS STEEL TYPE OR MOUNTED ON LEGS 250MM ABOVE FLOOR LEVEL.
3. FLOORS OF PREPARATION AREA, WASH-UP, SERVEY, TAKE AWAY & W.C.'S TO BE NON-SLIP CERAMIC TILES WITH 3MM EPOXY GROUTING GRADDED & DRAINED TO GULLY.
4. A SPACE OF 100MM TO BE ALLOWED BETWEEN WASH-UP SINKS & FITTINGS.
5. ALL WINDOW SILLS & TOPS OF WALLS NOT EXTENDED TO CEILING TO BE 45 DEGREES.
6. WALL SURFACES IN PREPARATION AREA; WASH-UP & SERVEY TO BE TILED TO FULL HEIGHT.
7. STORE ROOM TO BE EQUIPPED WITH FREE STANDING METAL SHELVES RAISED 250MM ABOVE FLOOR ON METAL LEGS.
8. A SUPPLY OF HOT & COLD WATER AT ALL WHB'S WASH-UP SINKS.
9. WALL SURFACES BEHIND & ABOVE ALL WHB'S TO BE COVERED WITH GLAZED TILES.
10. ALL TABLES & OTHER WORKING SURFACES TO BE OF STAINLESS STEEL WITH 100MM HIGH UPRIGHT.
11. POTATO PEELER TO BE SEPARATE UNIT WITH LEGS.
12. PREMISES TO BE MADE RODENT PROOF.
13. ALL WORK TO BE DONE IN A WORKMANLIKE MANNER & TO THE SATISFACTION OF THE HEALTH DEPARTMENT.
14. ALL ELECTRICAL CONNECTING CABLES TO BE PVC ENCASED.
15. MECHANICAL VENTILATION:
 - (i) HABITABLE AREAS: FRESH AIR TO BE SUPPLIED AT A RATE OF 17 SL/S/PERSON. AIR TO BE EVENLY DISTRIBUTED THROUGHOUT ALL HABITABLE AREAS AND THE VELOCITY IS NOT TO EXCEED 0.5M/S.
 - (ii) KITCHENS: FRESH AIR SUPPLIED AT A RATE OF 7.5 SL/S/PERSON (COMMERCIAL). AIR TO BE EVENLY DISTRIBUTED THROUGHOUT THE KITCHEN AND THE VELOCITY IS NOT TO EXCEED 0.5M/S.
 - (iii) WATER CLOSETS: AIR TO BE EXTRACTED TO EXTERNAL AT A RATE OF 20 SL/S/PERSON PER FITMENT (COMMERCIAL/INDUSTRIAL PREMISES).

GENERAL NOTES

1. EXTERNAL WALLS TO COMPLY WITH N.B.R. 110 WALL FOUNDATIONS TO BE MINIMUM 600 WIDE & 200 THICK.
2. CANOPY & EXTRACTION DUCT TO COMPLY WITH ALL LOCAL REGULATIONS.
3. ALL LIGHTING & VENTILATION TO COMPLY WITH PART 'D' OF THE NATIONAL BUILDING REGULATIONS.
4. 2 A.B.'S TO EACH URINAL & SHOWER.
5. 2 A.B.'S OVER EACH FAN-LESS DOOR OR WINDOW.

ENVIRONMENTAL HEALTH NOTE:

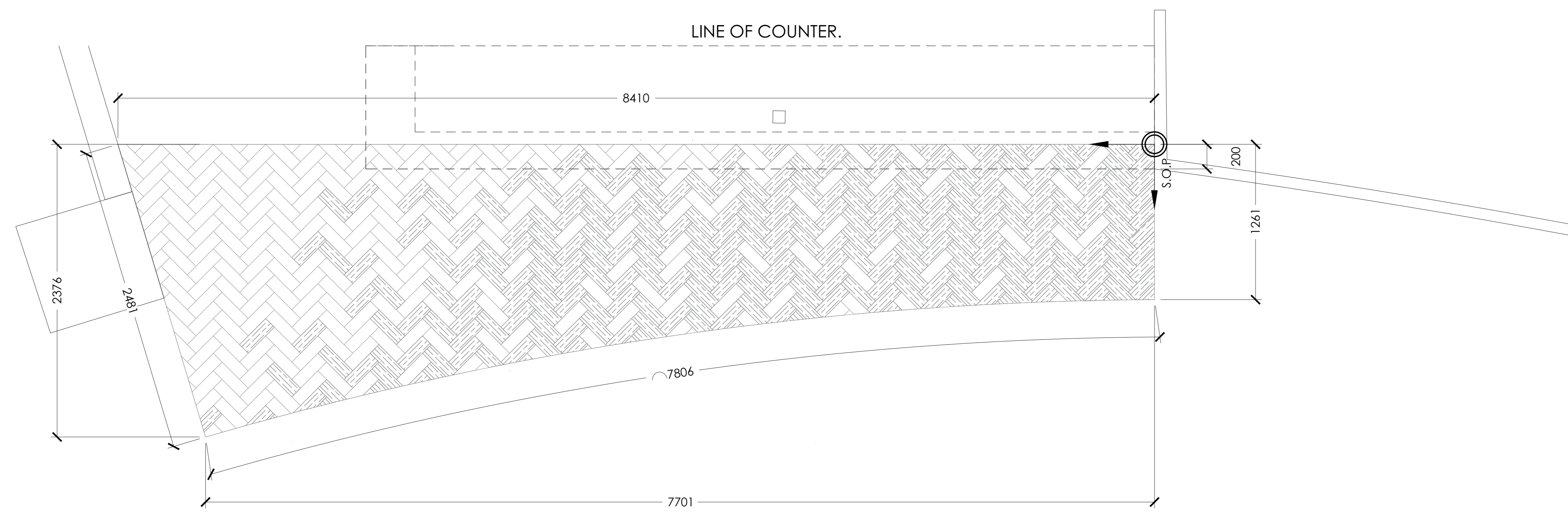
THE PREMISES MUST COMPLY WITH THE PROVISIONS OF THE TOBACCO PRODUCTS CONTROL AMENDMENT ACT, 1999

IMPORTANT NOTES

ALL DIMENSIONS TO BE CONFIRMED ON SITE PRIOR TO COMMENCEMENT OF CONTRACT. DO NOT SCALE THIS DRAWING USE FIGURED DIMENSIONS ONLY. ANY DISCREPANCIES TO BE BROUGHT UNDER THE ATTENTION OF DHQ DESIGNER & FAMOUS BRANDS PROJECT MANAGERS BEFORE COMMENCING WITH WORK. FAMOUS BRANDS WILL NOT BE HELD RESPONSIBLE FOR COST INCURRED

SQUARE METERS

B.O.H. %	40%
F.O.H. %	60%
TOTAL RESTAURANT INTERIOR AREA	317.400000
B.O.H AREA	137
F.O.H AREA	180.4
PLAY WORLD AREA	0
EXTERIOR AREA	0



"COUNCIL SUBMISSION PLAN"

DHO INTERIOR BRAND ARCHITECTS
LINCOLNWOOD OFFICE PARK BLOCK D,
WOODMEAD DR, WOODMEAD
TEL: 010 410 8526

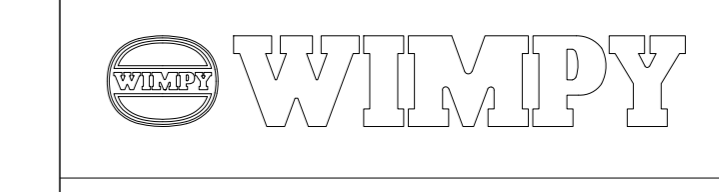
DAVID COUSINS
SACAP: PAD 24749835

REV	DATE	DETAILS	NAME
A	09.10.19	REDUCED PERGOLA BEAMS AND SLATS REMOVED COLUMN CLADDING REVISED TAKE AWAY BENCH REDUCED TILING AT TAKE AWAY REDUCED FLAMBER RULES TO EXTERIOR	TL

DHO
INTERIOR \ BRAND \ ARCHITECTS

Famous Brands Design Studio Trading As DHQ
Lincolnwood Office Park
Building D - Ground Floor
6-8 Woodlands Drive, Woodmead
TEL: 010 410 8520
E-Mail: info@dhqqa.co.za

BRAND TEMPLATE 0007



PROJECT: INTERNAL SHOP FITTING & ALTERATIONS TO WIMPY PRETORIUSKOP REVAMP

ADDRESS:
ERF NUMBER:
PRETORIUS CAMP
KRUGER NATIONAL PARK, 1200
MPUMALANGA

DESCRIPTION - WORKING DRAWING
FLOOR TILING LAYOUT

DRAWING NO.
W - 110401 - MP - K4

SEAL	DATE	SCALE	CHECKED	REV
TUMELO LEKHU	04.03.2019	1:50		A

DO NOT SCALE, USED FIGURED DIMENSIONS COPYRIGHT RESERVED

FLOOR & WALL FINISHES LAYOUT
SCALE 1:20