



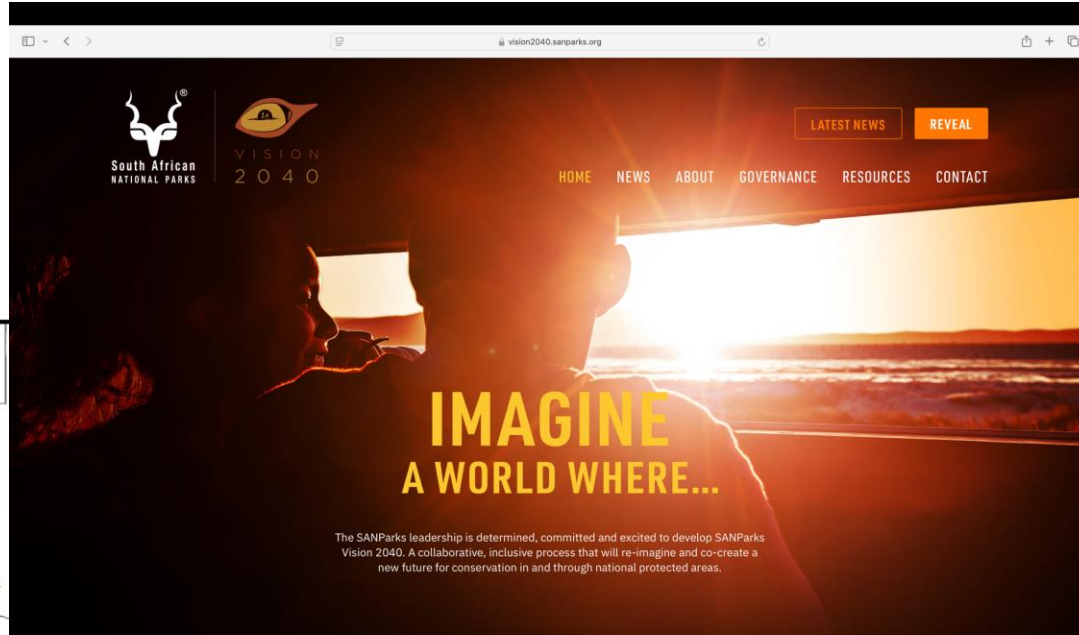
Improved household waste management as an opportunity to add value to protected area conservation

6 March 2025

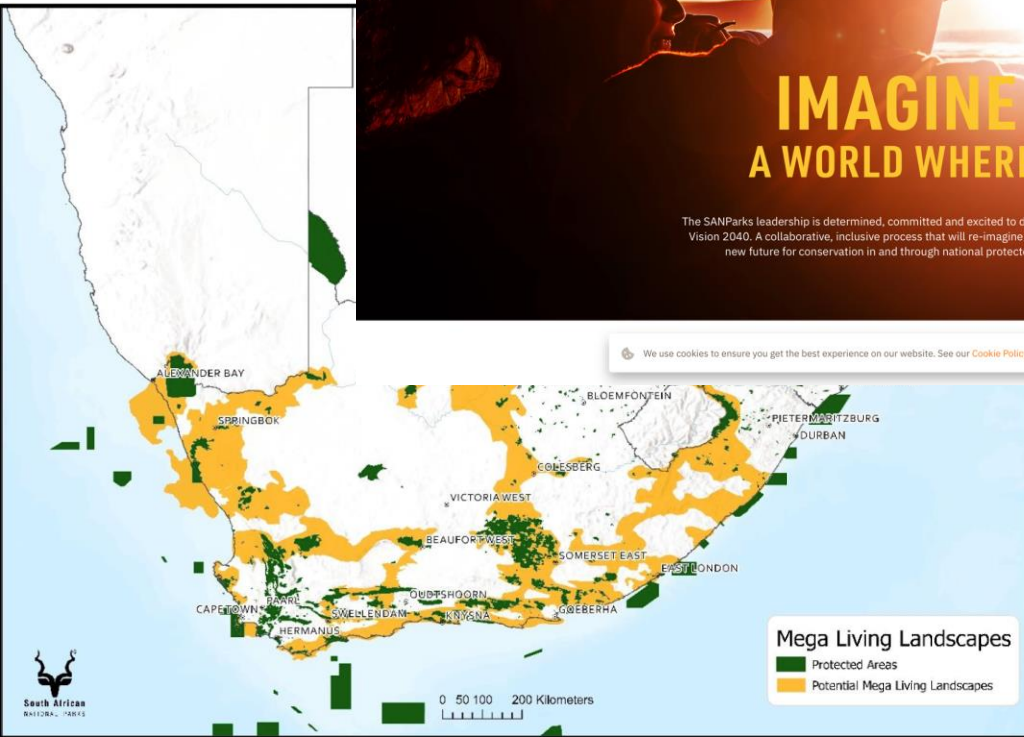
- Dr Montagu Murray

The Dream

Sanparks Vision 2040: People and nature thriving together in sustainable Mega Living Landscapes



- Towards MLLs
- Recognition of local communities
- Jobs, local entrepreneurs, education



Source:
<https://vision2040.sanparks.org/>

The Reality – Baseline 2025

(a) Heap 60



(b) Heap 110



(c) Heap 113



(d) Heap 118



(e) Heap 129



(f) Heap 103



- ✦ SA unemployment ~32%; extended unemployment ~42%
- ✦ Access to refuse removal - 60%
- ✦ 80% municipal landfill sites saturated, or nearing full capacity
- ✦ By 2050 - African population double; SA population ~64 to ~80 million

Sources

<https://data.who.int/countries/710>

www.Worldometers.info South Africa Solid Waste Management Industry Report 2024

Can the MLS dream become a reality?

- ✦ Face the facts - a tough task
- ✦ Good intentions - not good enough
- ✦ Viable solutions - integrated in households' lifeworld



Image credits:

<https://lethbridgenewsnow.com/2017/10/27/or-not-ostriches-bury-their-heads-in-sand/>

Moana Kadri, CC BY-NC-ND 2.0 license

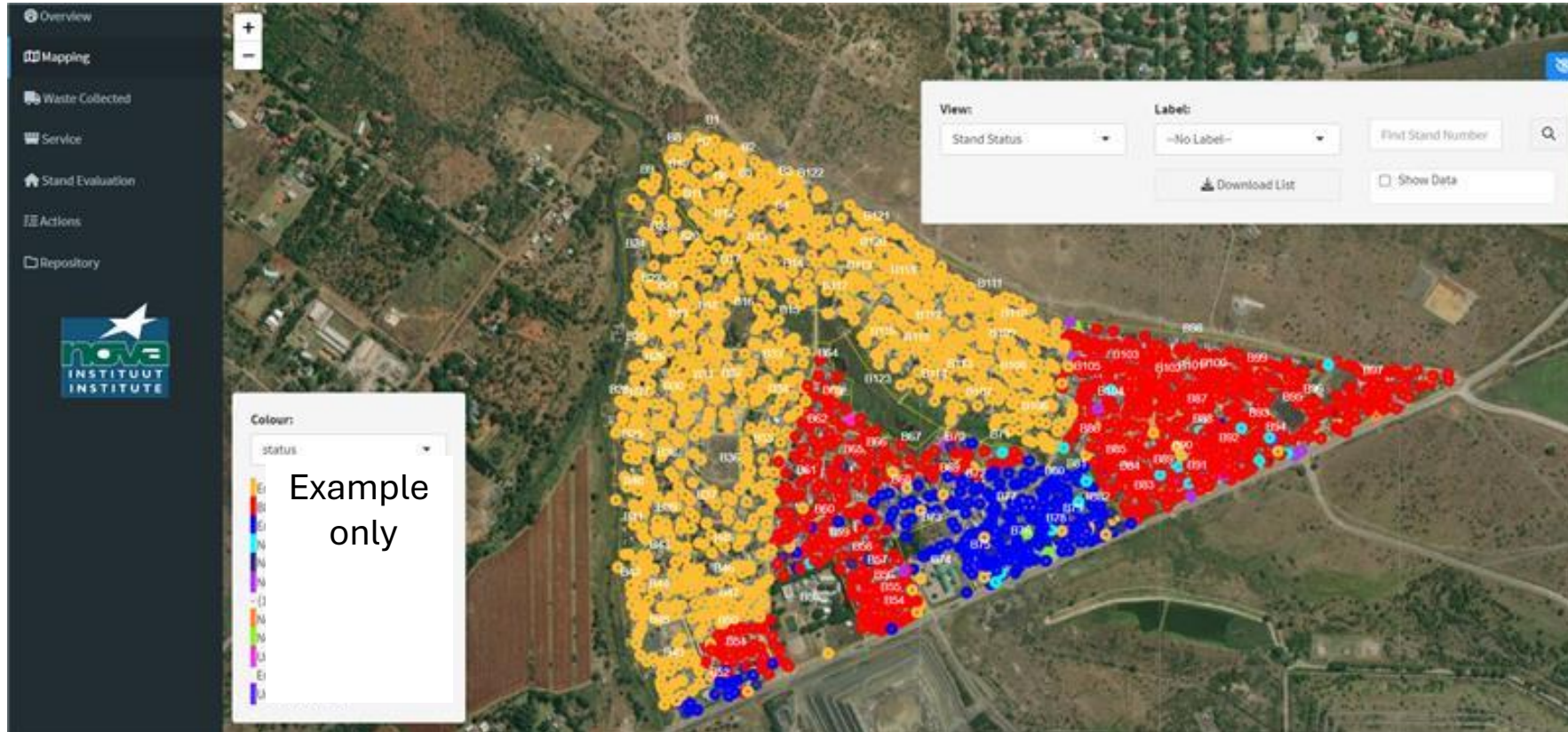
Tackling the tough task – new innovative waste model



- ✦ 8 mini-waste-sorting-for-transfer facilities operational
- ✦ ~ 30 000 people benefit
- ✦ Local waste pickers employed
- ✦ ~ 35 jobs per community
- ✦ 1000 tons sorted to date
- ✦ Household do S@S
- ✦ 50-60% landfill avoidance



Tackling the tough task – a brief case study



Household-level database & dashboard



Complete record keeping (block-chain style)



Tackling the tough task – a brief case study



✦ Live reporting on waste volumes, composition, and collection activity



Creating jobs and training young entrepreneurs

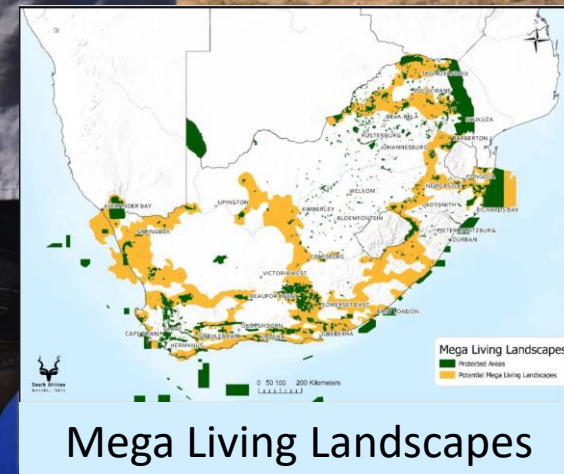


A trolley for a tough road

Baseline 2025



Vision 2040



...a step in the right direction





www.nova.org.za

NOVA
I N S T I T U T E