

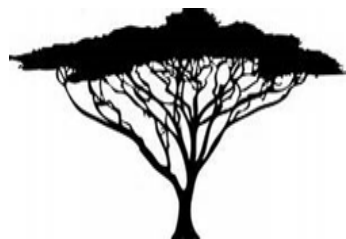
ACTIVITY PATTERNS OF WILDLIFE ALONG THE
PHALABORWA – HOEDSPRUIT RAILWAY LINE IN
BALULE NATURE RESERVE, SOUTH AFRICA.

Thela, S., Swanepoel, L., Allin, P., Collinson-Jonker, W., & Bhardwaj, M.

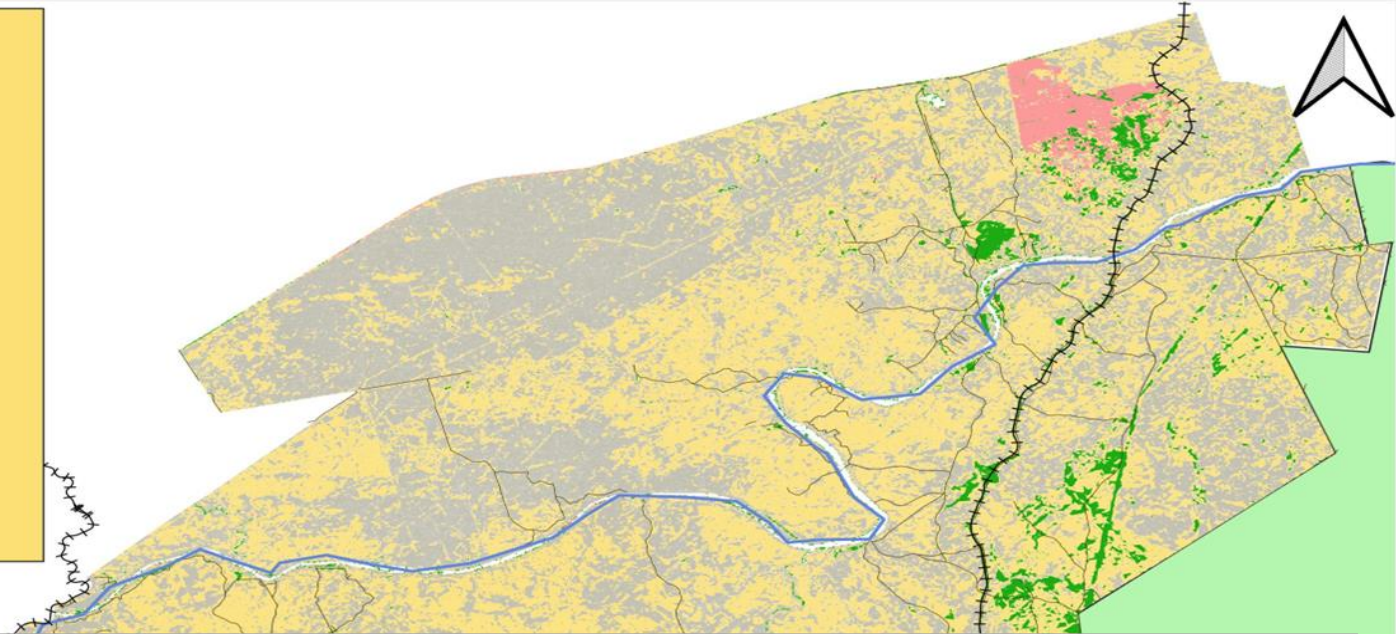
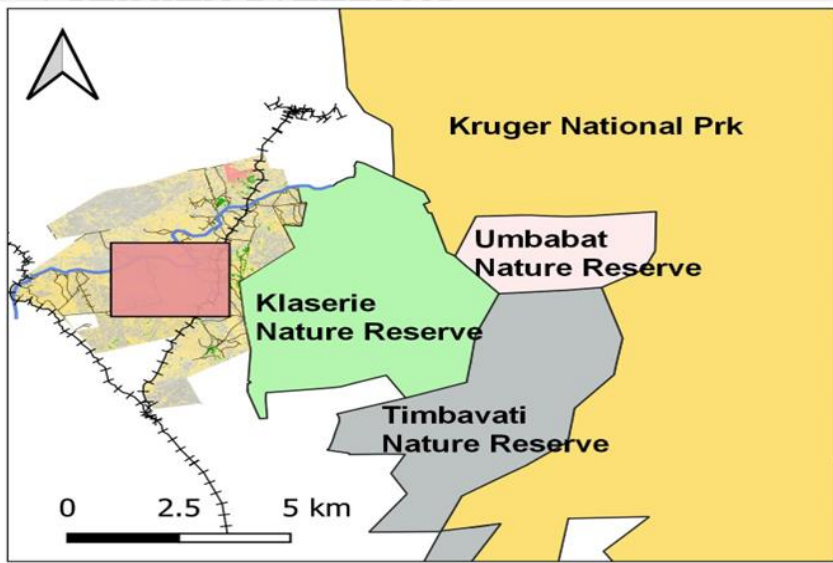
22nd SAVANNA SCIENCE NETWORK MEETING

02 – 06 March 2025

Skukuza, Kruger National Park



STUDY BACKGROUND



Research article

Mortality on the tracks: spatiotemporal patterns to rail-kill in the Balule Nature Reserve, South Africa

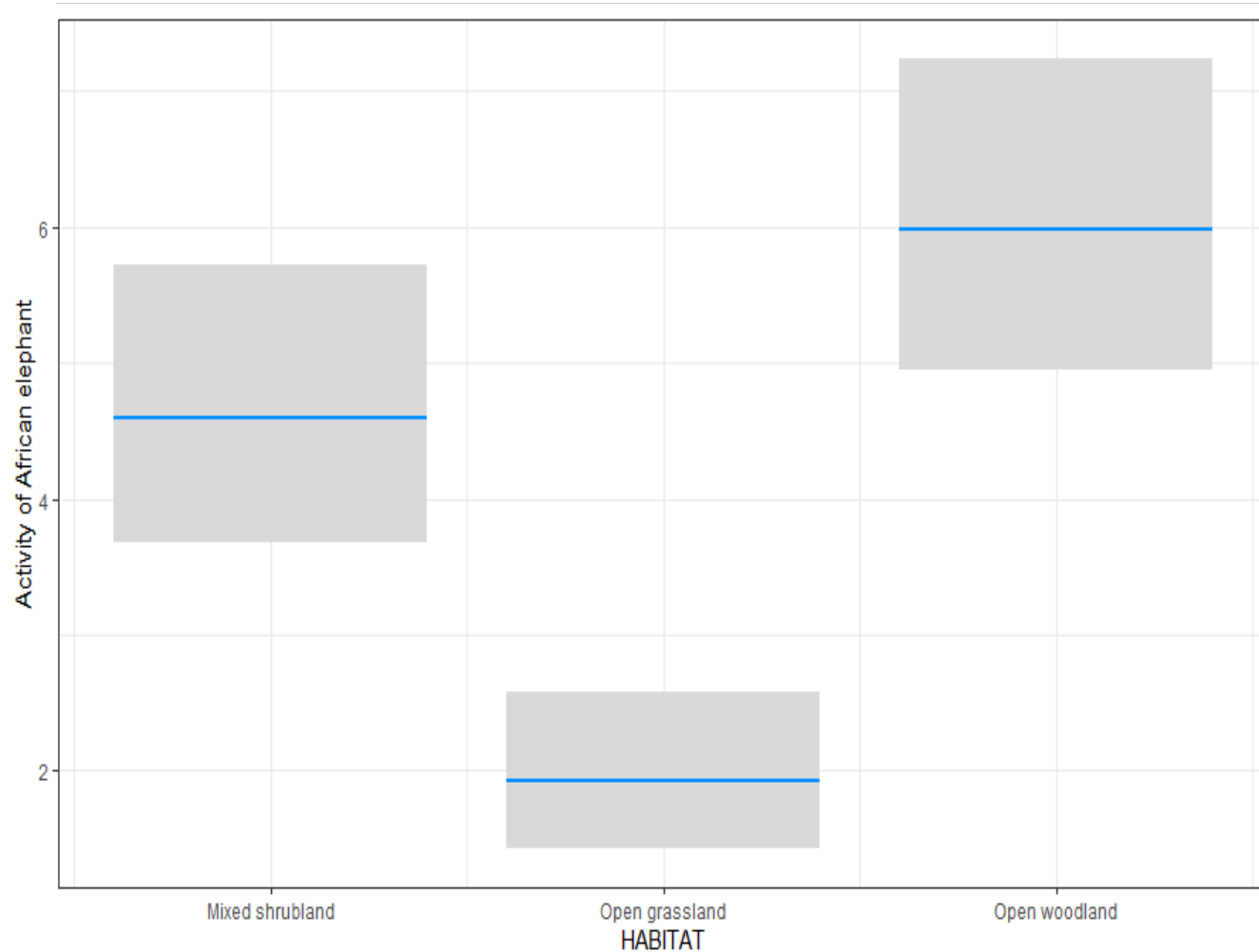
Manisha Bhardwaj¹, Wendy J. Collinson-Jonker^{2,3}, Siboniso K. Thela^{3,4,5}, Lourens H. Swanepoel^{3,4} and Paul Allin³

- Open grassland
- Open woodland
- Mixed shrubland
- Combretum - Mopani



RESULTS ON ELEPHANTS

	Estimate	Std. Error	Z-value	Pr(> z)
(Intercept)	-2.320	0.145	-15.972	<0.001
DISTANCE	-0.002	0.001	-2.919	0.004
SEASON wet	0.379	0.128	2.964	0.003
HABITAT open grassland	-0.744	0.182	-4.091	<0.001
HABITAT open woodland	0.348	0.146	2.389	0.017



CONCLUSION

□ Summary

Spatiotemporal differences in the activities of focal mammal species along the railroad.

- implications of management interventions to reduce wildlife-train collision for all mammal species.

□ Recommendations

Measures to prioritise species of conservation concern & most affected to reduce collision risk.

- interventions to reduce risks of elephant-train collisions during wet season & open woodlands.

□ Moving forward

Need for more research work and collaboration with other organisations.



Swedish University
of Agricultural Sciences

THANK YOU...!!!!



University of Venda



ENDANGERED
WILDLIFE TRUST
Protecting forever, together.

SIBONISO, K. THELA

C: 076 6436 678

E: SIBONISOTHELA@GMAIL.COM