

# Human-elephant conflict in communities around Gonarezhou National Park landscape, Zimbabwe

Magwiro, R.P.<sup>1,2</sup>, Mariotti, E.<sup>2</sup> & Parrini, F.<sup>2</sup>

<sup>1,2</sup>*Gonarezhou Conservation Trust, Gonarezhou National Parks, Private Bag 7003, Chipinda Pools, Chiredzi, Zimbabwe*

<sup>2</sup>*School of Animal, Plant and Environmental Sciences, University of the Witwatersrand, Private Bag 3, Wits, 2050, South Africa*

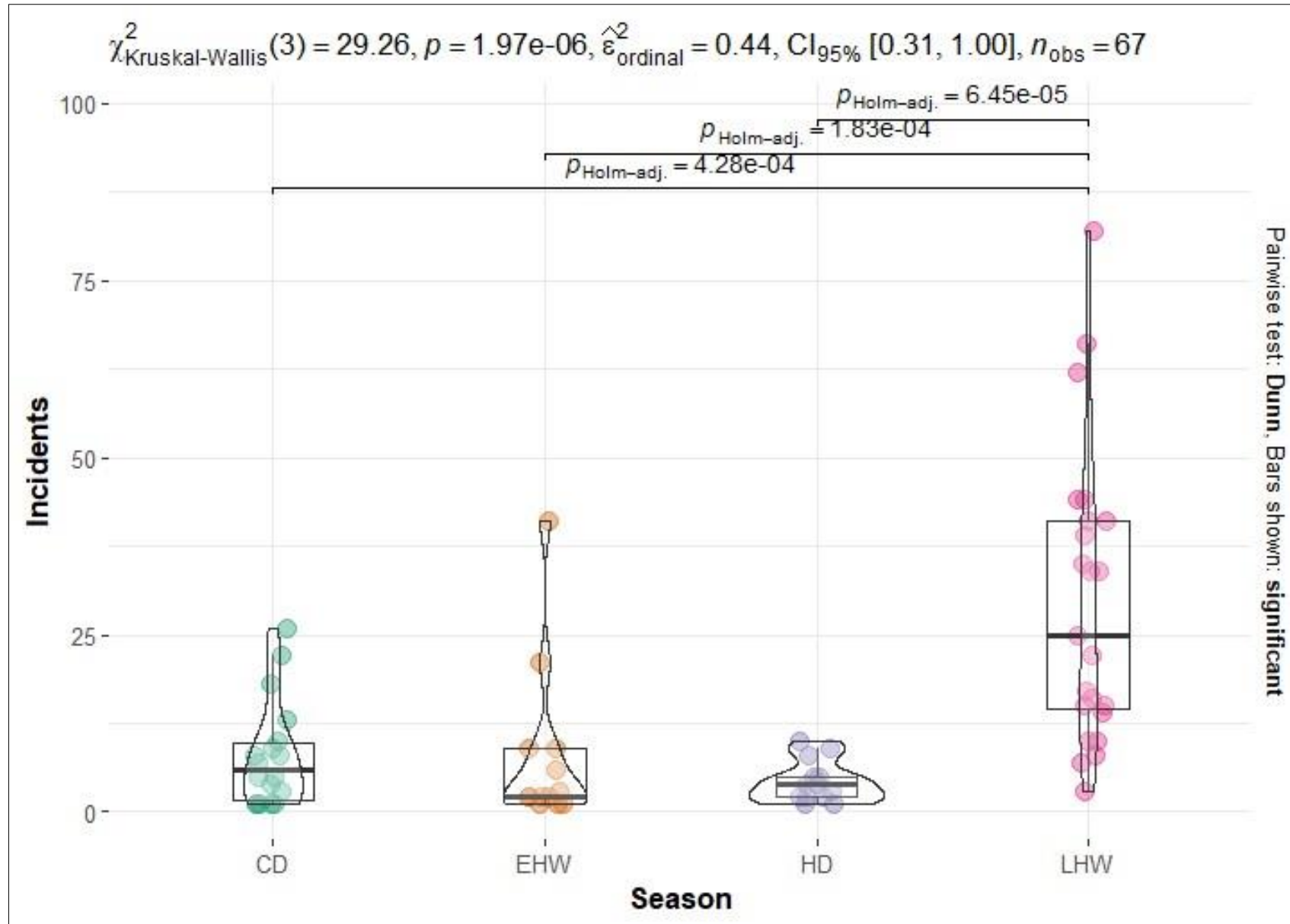
[rumbi@gonarezhou.org](mailto:rumbi@gonarezhou.org); [Francesca.Parrini@wits.ac.za](mailto:Francesca.Parrini@wits.ac.za), [elenamariotti8@gmail.com](mailto:elenamariotti8@gmail.com)

# Background

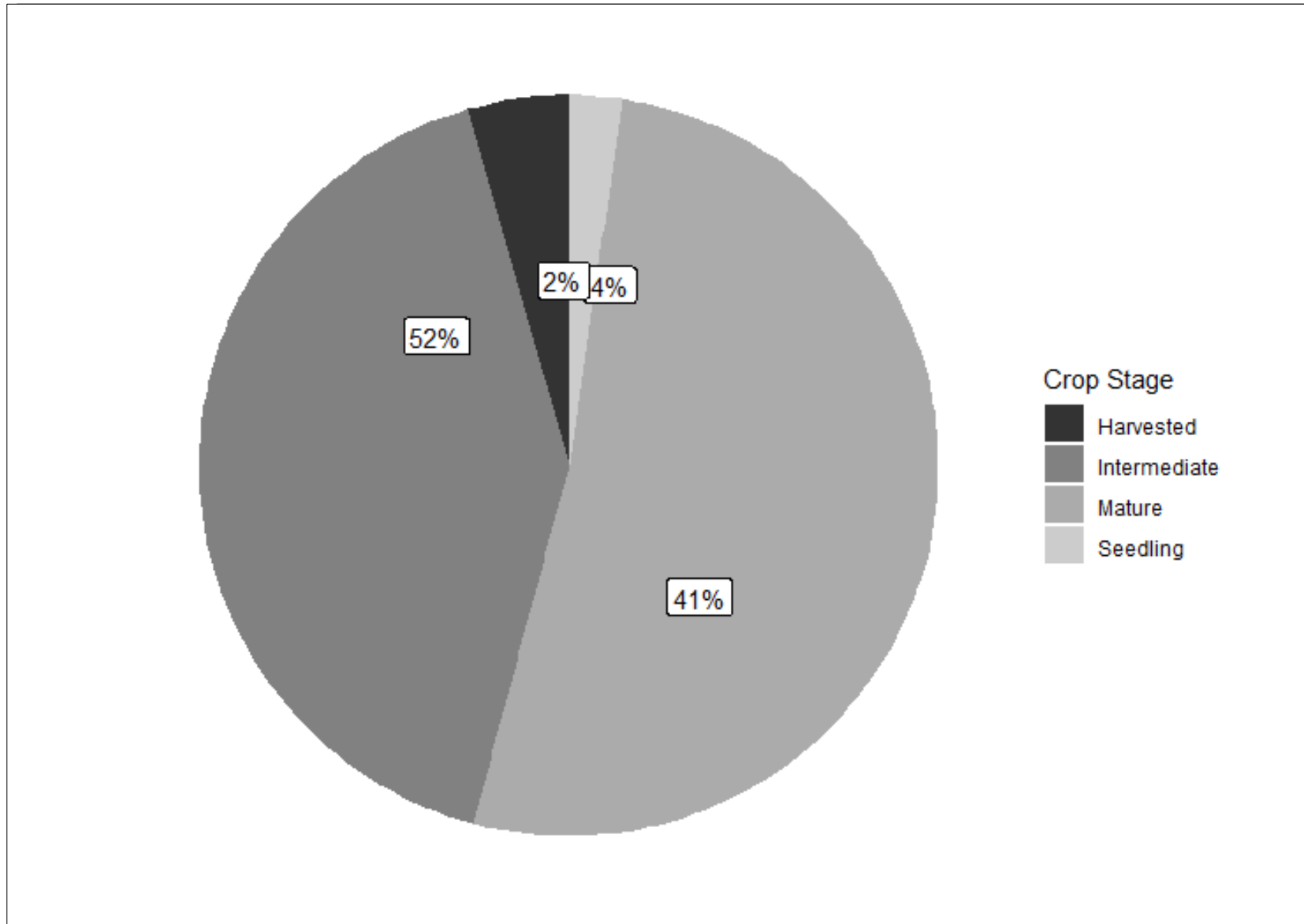
- Natural resources gradient prompts movement
- Interactions during movement result from HWC
- Around GNP, crop raiding common conflict type, 98% cause by elephants
  - Increasing elephant population within landscape
  - Lack of full proof fence around GNP
  - Settlements along possible corridors
- HEC have a magnified effect on communities as
  - subsistence livestock and crop farming
  - Lack of compensation or offsetting scheme



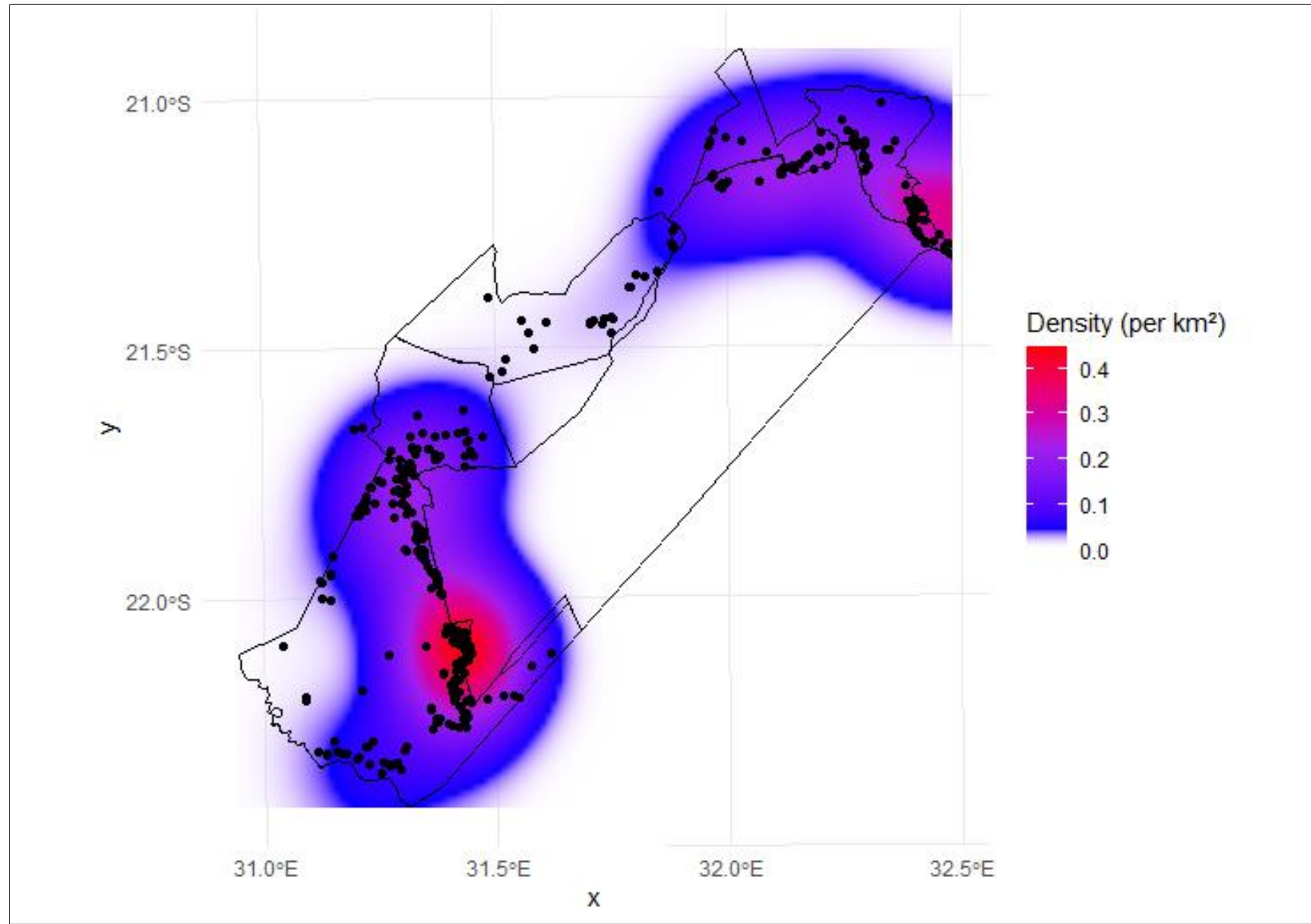
# Seasonal distribution of conflict



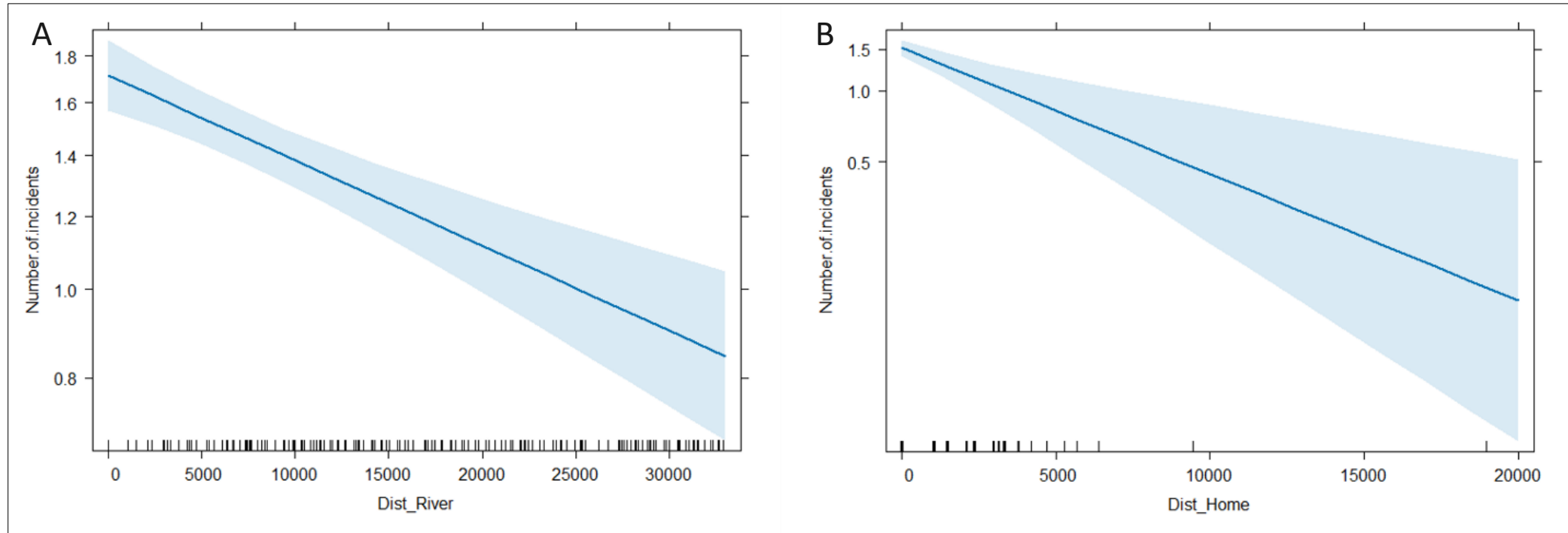
# Human-elephant conflict around GNP



# Spatial distribution of conflict

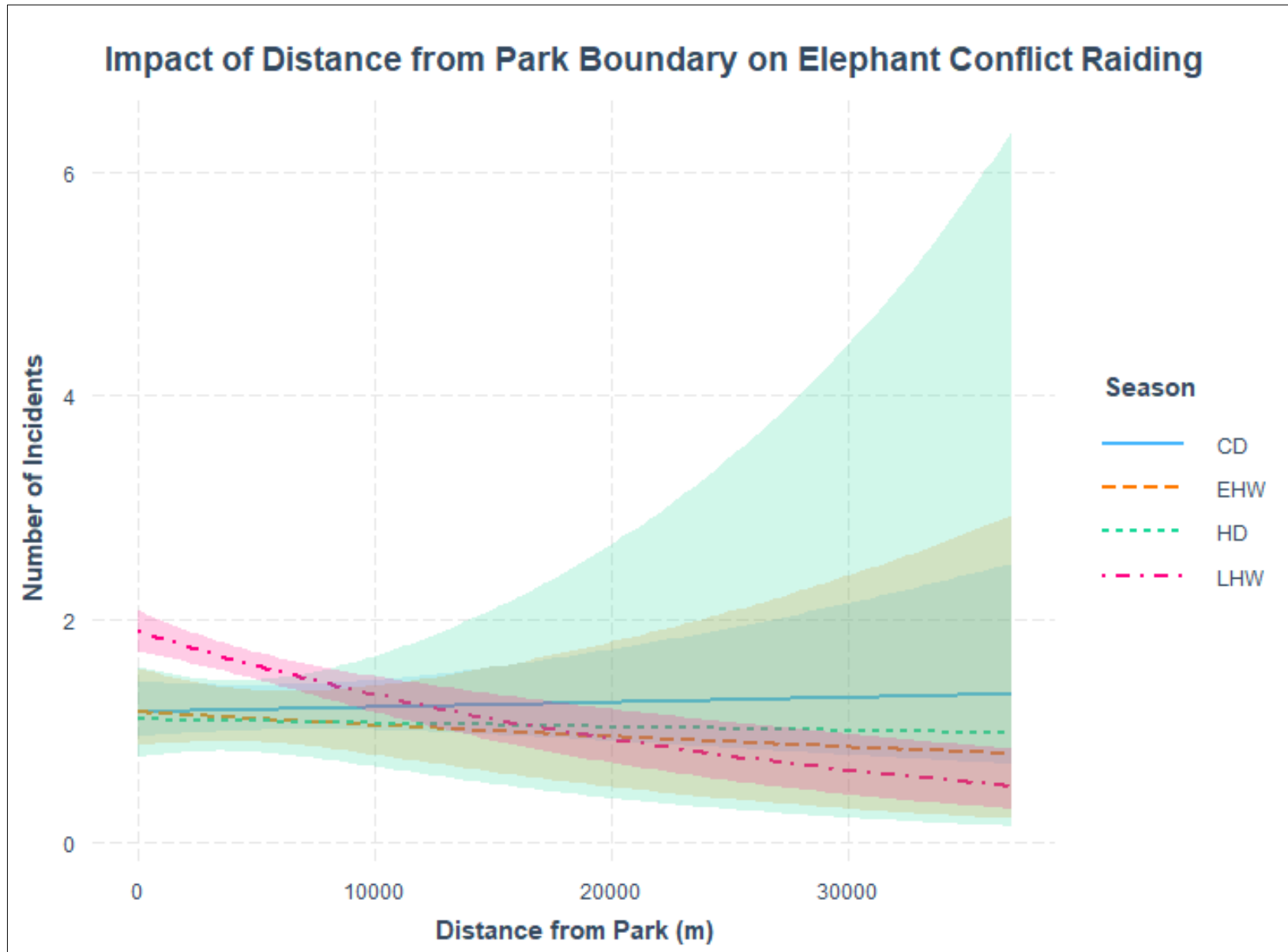


# Effect of environmental factors on HEC



The effect of A distance from the major river and B distance from the homestead on the number of elephant crop raiding incidents experienced in communities around GNP, Zimbabwe.

# Effect of environmental factors on HEC



# Conclusion

## Reflection points

- Spatial considerations in rural settlement planning could reduce HEC in similar contexts.
- Could the scheduling of HEC conflict mitigation be aligned with seasons and crop maturation periods for effectiveness in conflict reduction?
- Should the park be fenced on the boundaries where they have a hard edge with communities to reduce the frequency of conflict?



