

# AI or Eino?

Are we still driving  
the tech train or  
are we asleep at  
the wheel



# DANGER



Baclawski, K. (2018, June). The observer effect. In *2018 IEEE Conference on cognitive and computational aspects of situation management (CogSIMA 2018)* (pp. 83-89). IEEE

Selwyn, N. (2016). Minding our language: why education and technology is full of bullshit... and what might be done about it. *Learning, Media and Technology*, 41(3), 437-443.

Costello, E. ChatGPT and the Educational AI Chatter: Full of Bullshit or Trying to Tell Us Something?. *Postdigit Sci Educ* 6, 425-430 (2024).





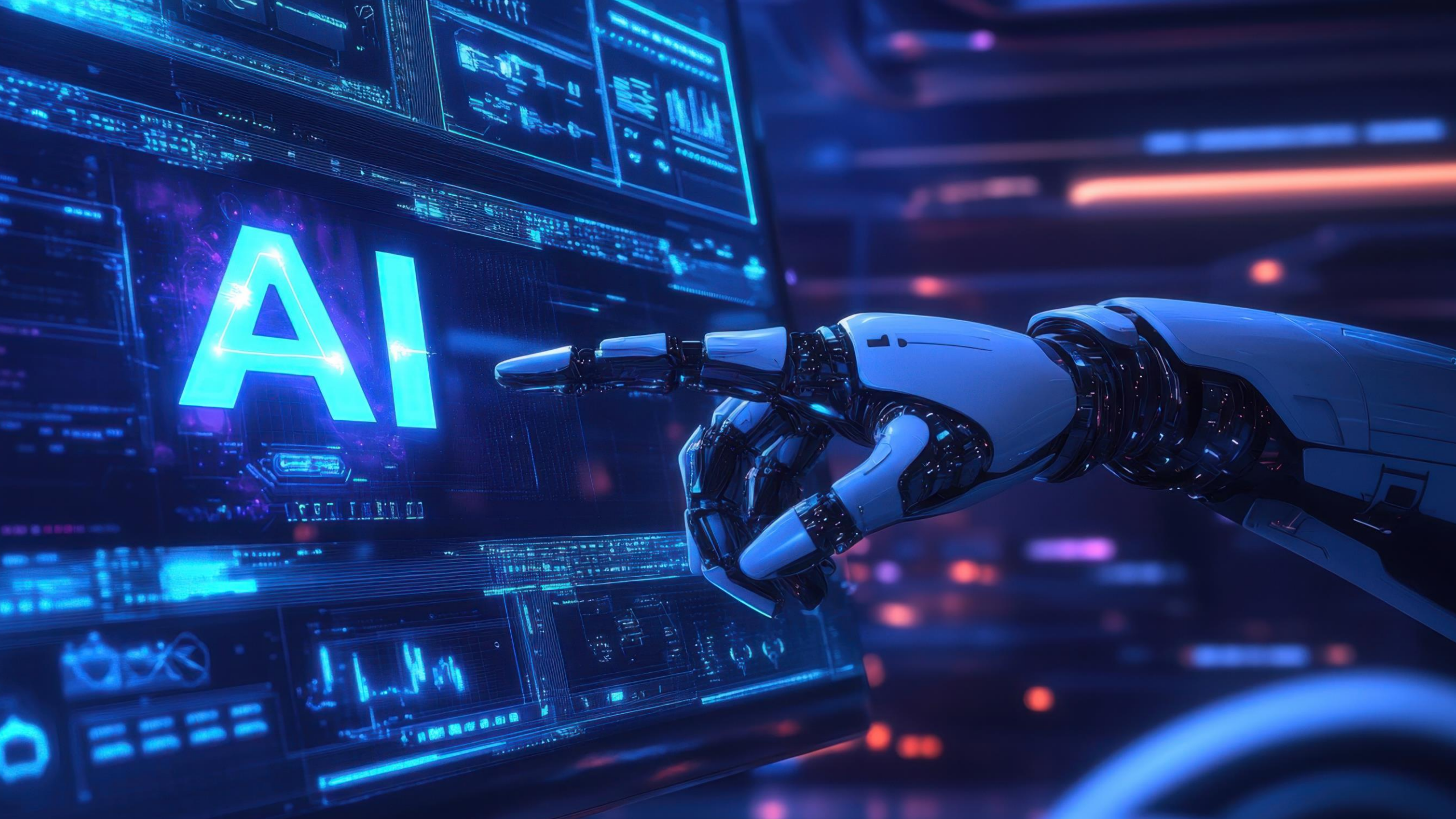




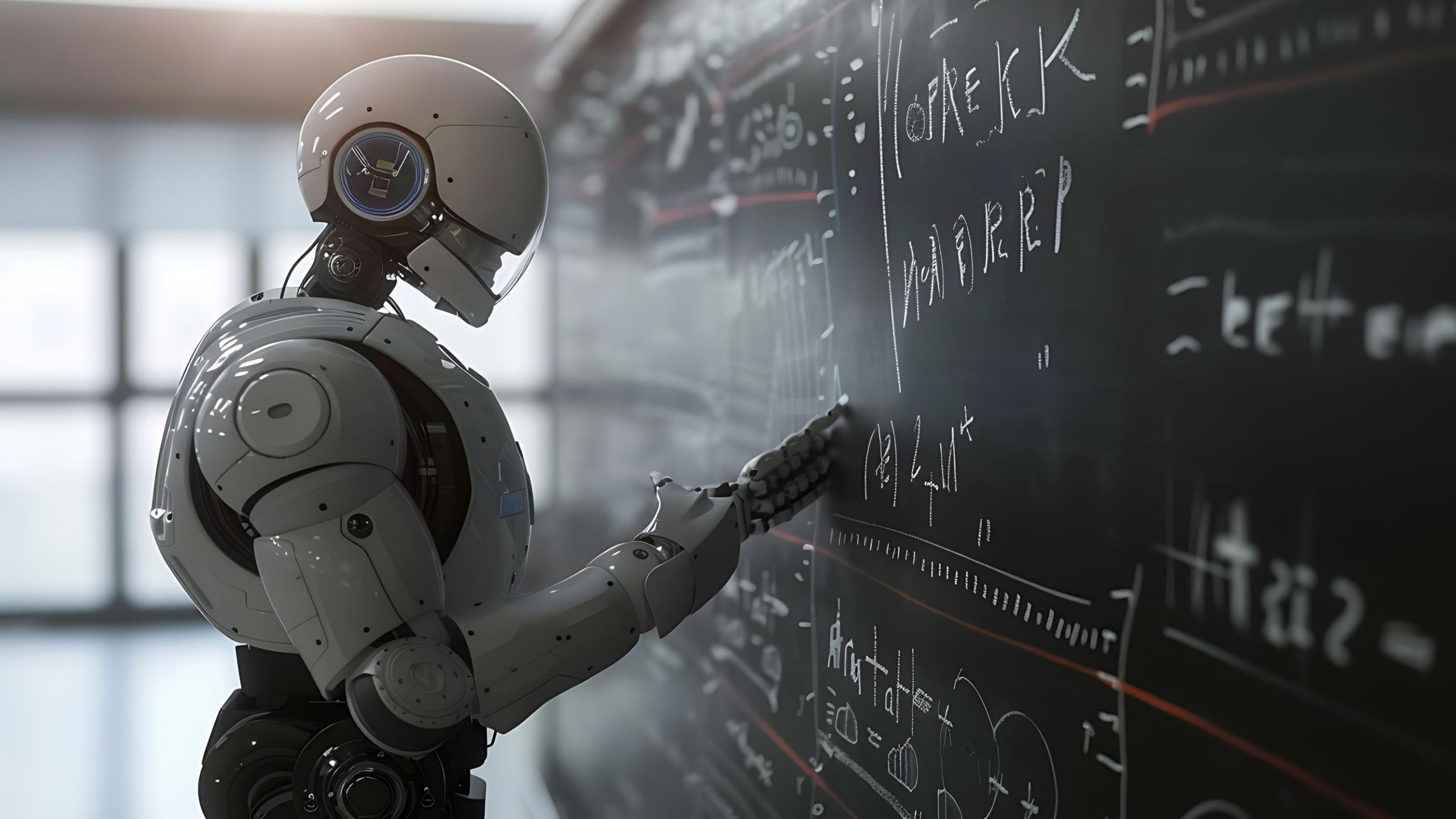








AI



$\int_0^1 x^2 dx = \frac{1}{3}$

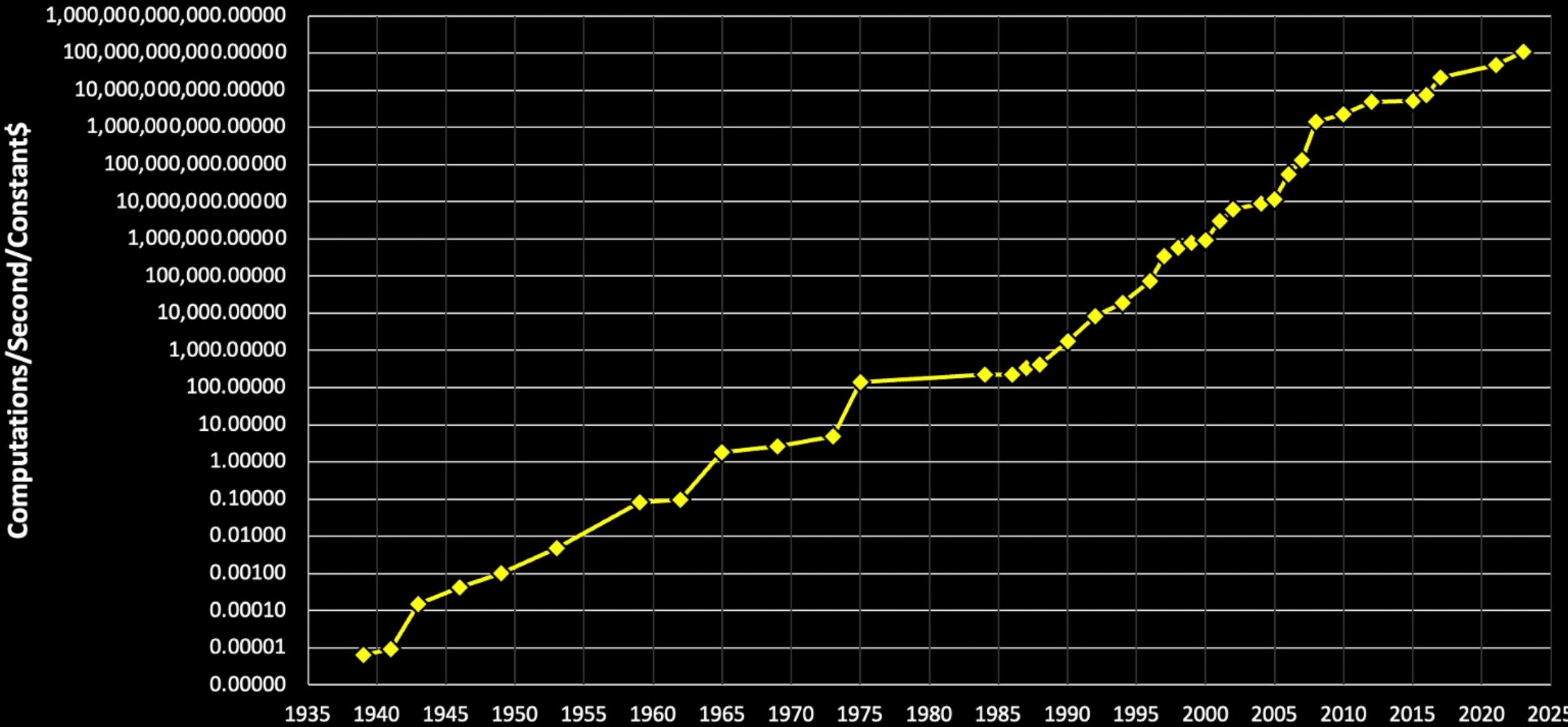
$\frac{d}{dx} x^3 = 3x^2$

$(x^2)' = 2x$



# Price-Performance of Computation, 1939-2023

*Best achieved price-performance in computations per second per constant 2023 dollar*



Moore, G. (1965). Cramming more components onto integrated circuits. *Electronics*, 38(8), 114-117.

Kurzweil, R. (2024, June 27). *The Last 6 Decades of AI — And What Comes Next* [Ted Talk].

**Year**



**ELITE**  
**DANGEROUS**<sup>®</sup>

# NO MAN'S SKY



NO MAN'S SKY

34,246,575,342,465





Willow



WE WILL  
TAKE  
YOUR JOB



CHATBOT/ AI (UNDERLYING LLM)	DEEPSEEK (DEEPSEEK SUITE)	META AI (LAMA 3.1)	GEMINI (GEMINI LLM FAMILY)	CLAUDE (SONNET 3.5)	OPENAI (CHATGPT-4O)
<b>RISKS</b>					
Over reliance on technology resulting in a loss of skills and a distancing from nature	2	2	1	2	2
High reource/ energy demands	1	1	1	1	2
Erosion of indigenous knowledge	1	0	1	1	2
Ethical concerns	1	0	2	0	2
Data quality concerns	0	1	0	1	1
<b>OPPORTUNITIES</b>					
AI can augment human expertise	1	1	1	1	2
Analyses and pattern recognition	0	1	0	1	0
Improved efficiency and resource (funding) use	0	0	0	1	2
Improved collaboration, bridging the knowledge gap	2	1	2	4	2
Good for the environment	1	0	3	0	2
Preserving indifgenous knowledge and empowering local communities	2	0	0	0	0
<b>TOTAL "OPINIONS" PER AI</b>	<b>11</b>	<b>7</b>	<b>11</b>	<b>12</b>	<b>17</b>



Two bald eagles are perched on a weathered, light-colored tree branch. The eagle on the left is facing left, looking upwards. The eagle on the right is facing right, looking towards the center. Both eagles have white heads and necks, and dark brown wings and bodies. The background is a clear, light blue sky.

**Thank You**

**We dedicate this presentation to God,  
Our Dogs, and Fish Eagles**

***May we never forgot your call***