



CHARLES  
UNIVERSITY  
Czech republic

EcoSpace



# Seasonal variations in bird community structure between wet and dry savanna

**Veronika Kučminová**

David Hořák

Gregg Jansen Van Regensburg

Tanja van de Ven

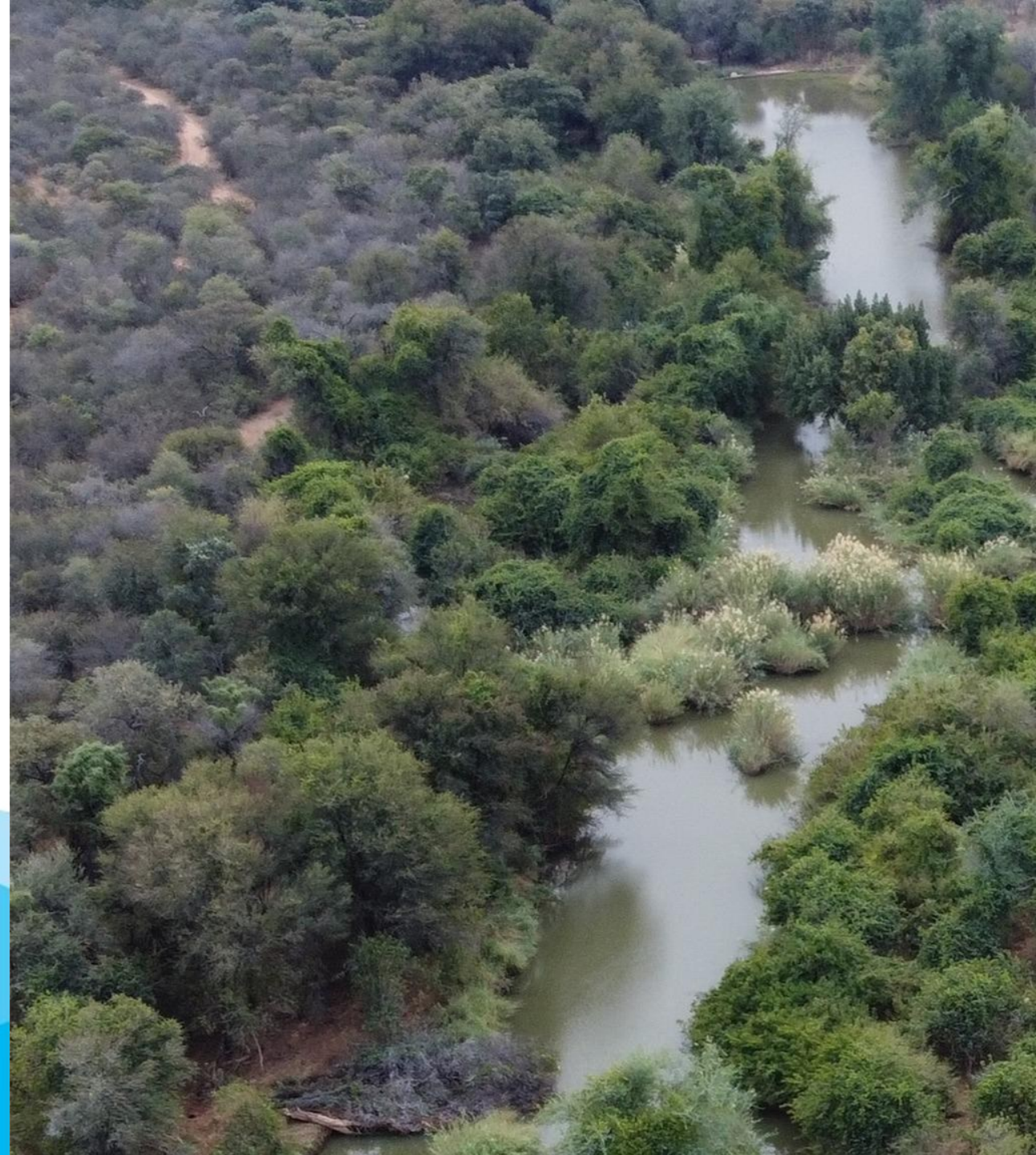




# Water changes savanna in time



# Water changes savanna in space



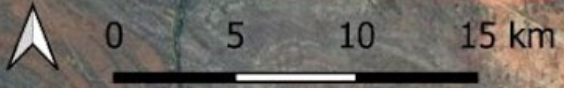
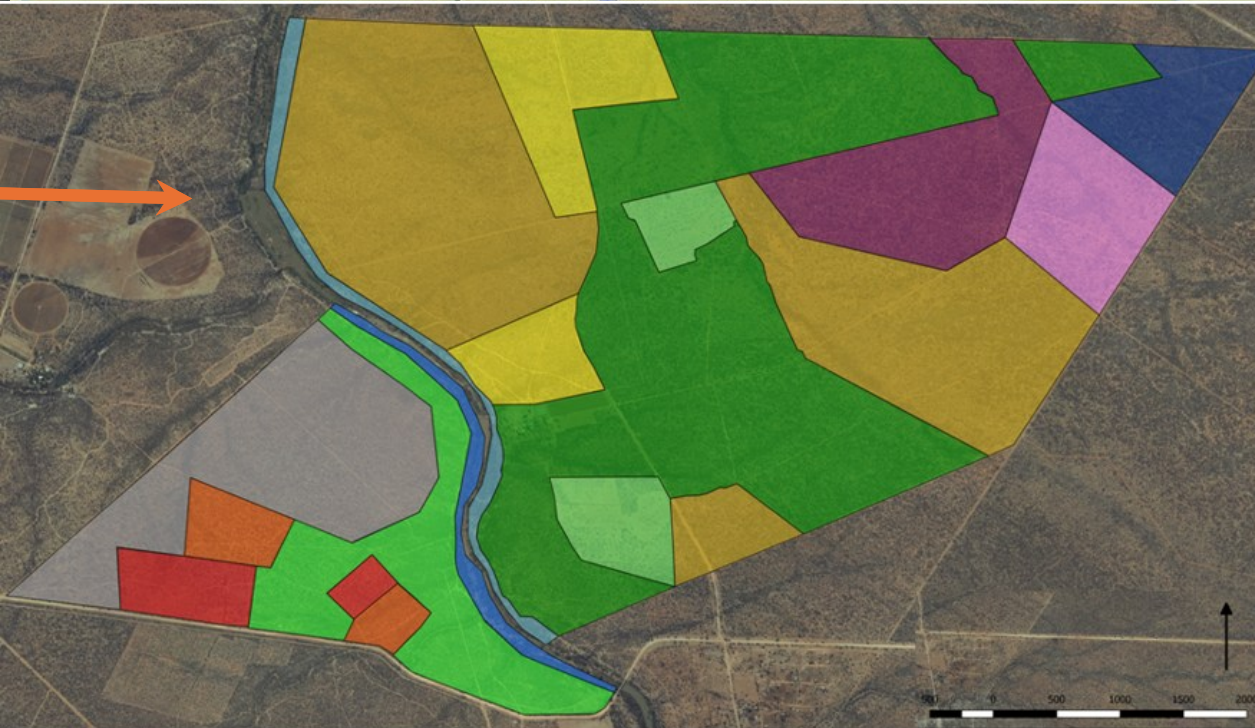
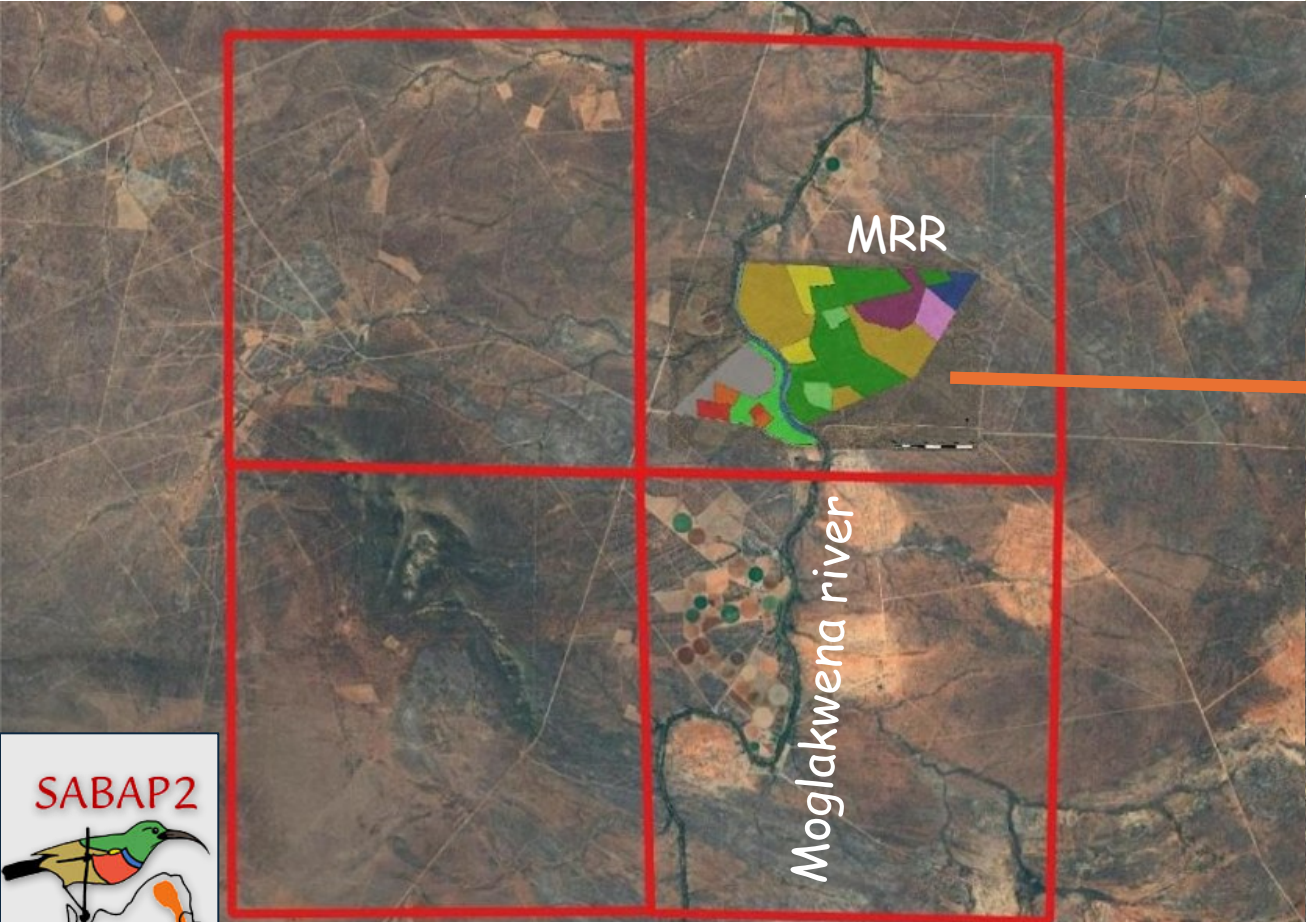


How do this  
factors  
affect  
savanna  
birds?



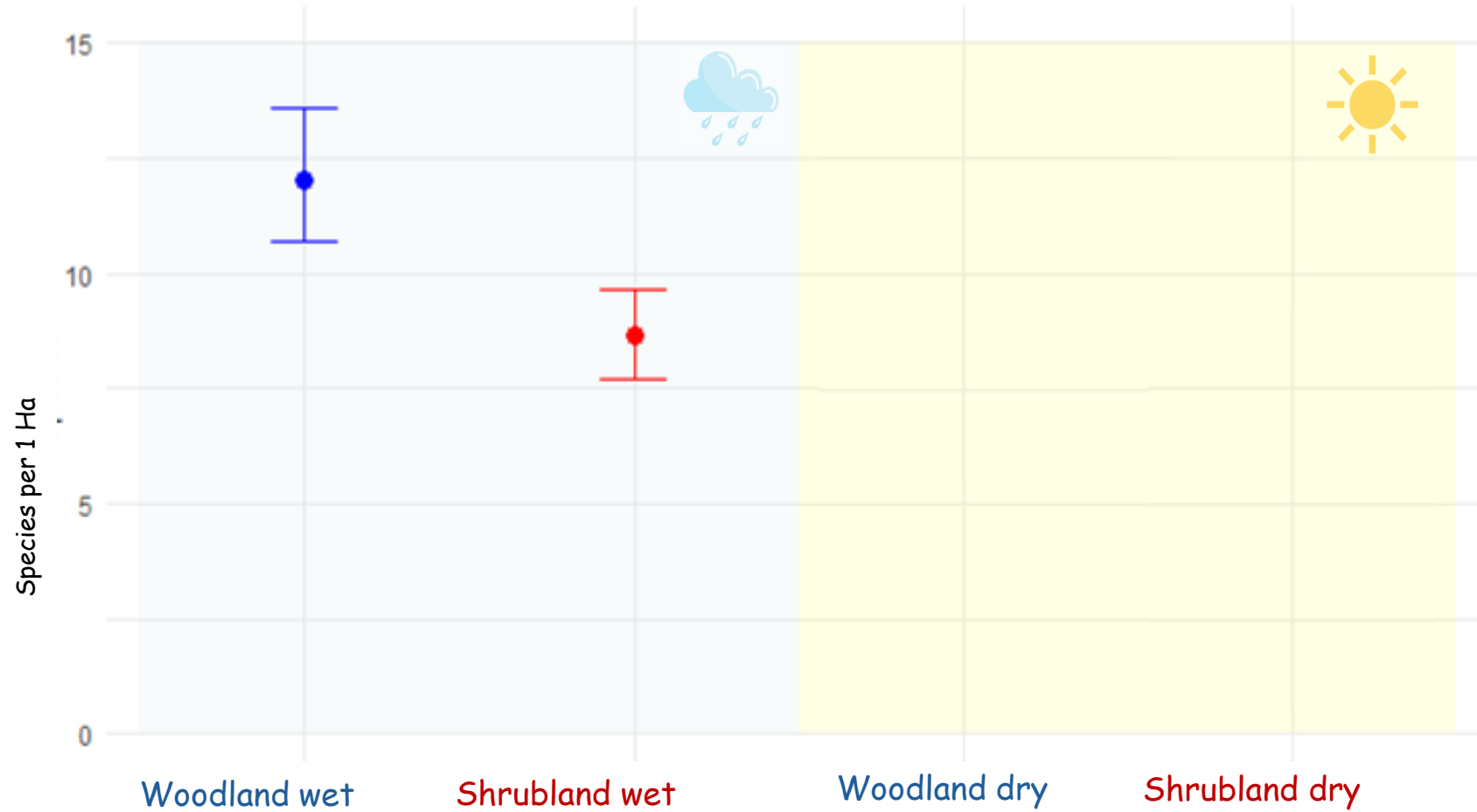


# Mogalakwena River Reserve



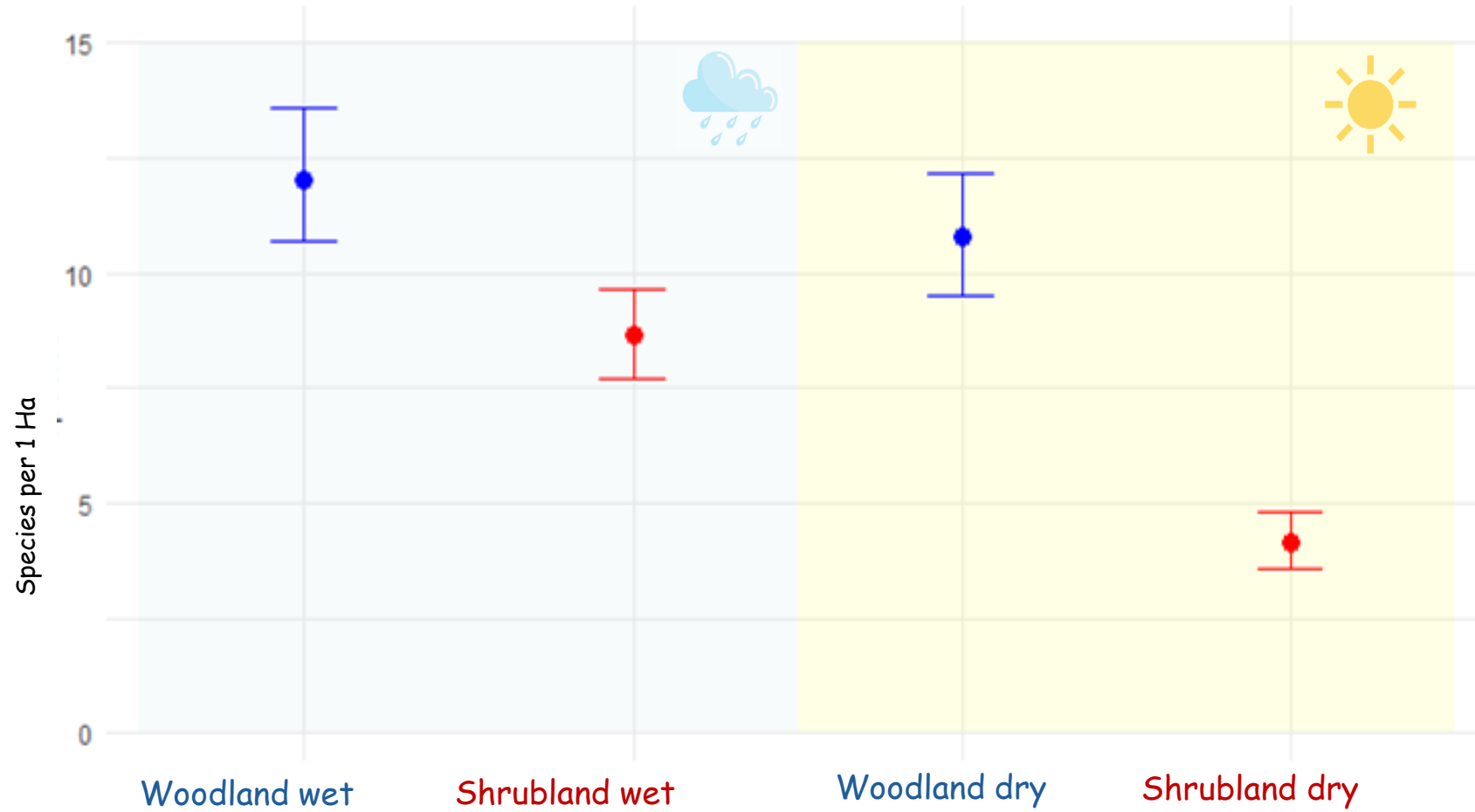
# Biotope differences

## Maximum number of species



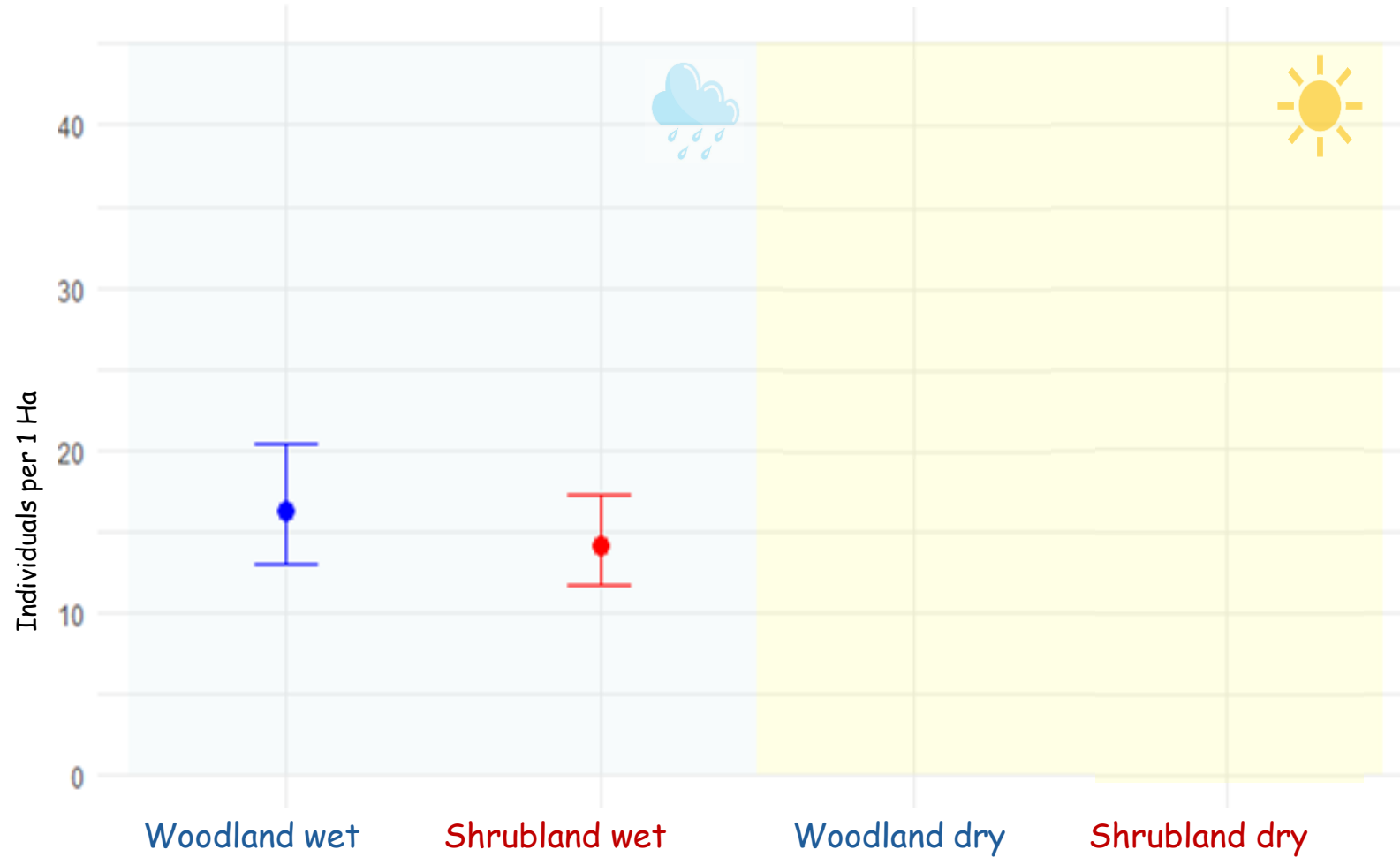
# Biotope differences

## Maximum number of species



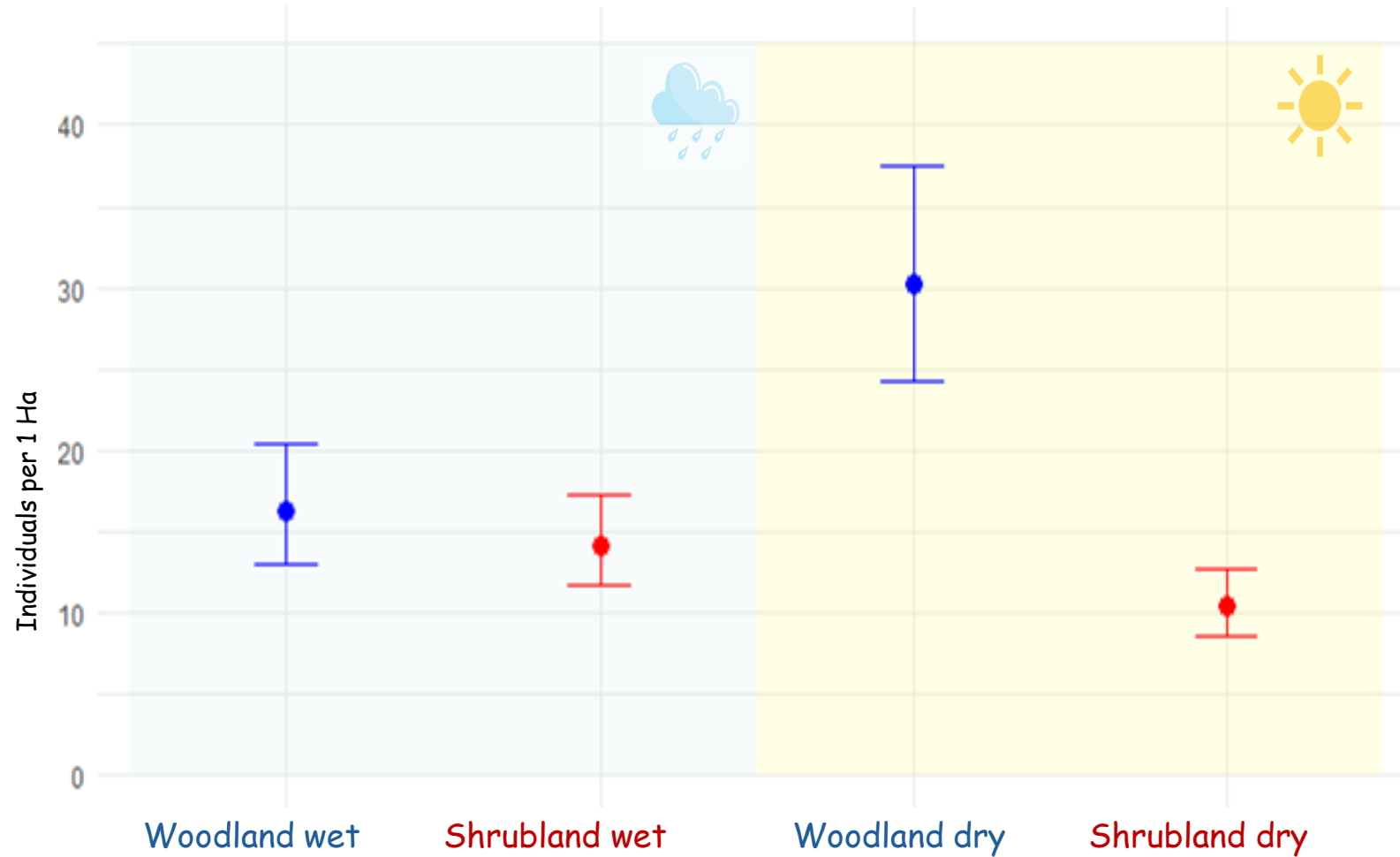
# Biotope differences

## Maximum number of individuals



# Biotope differences

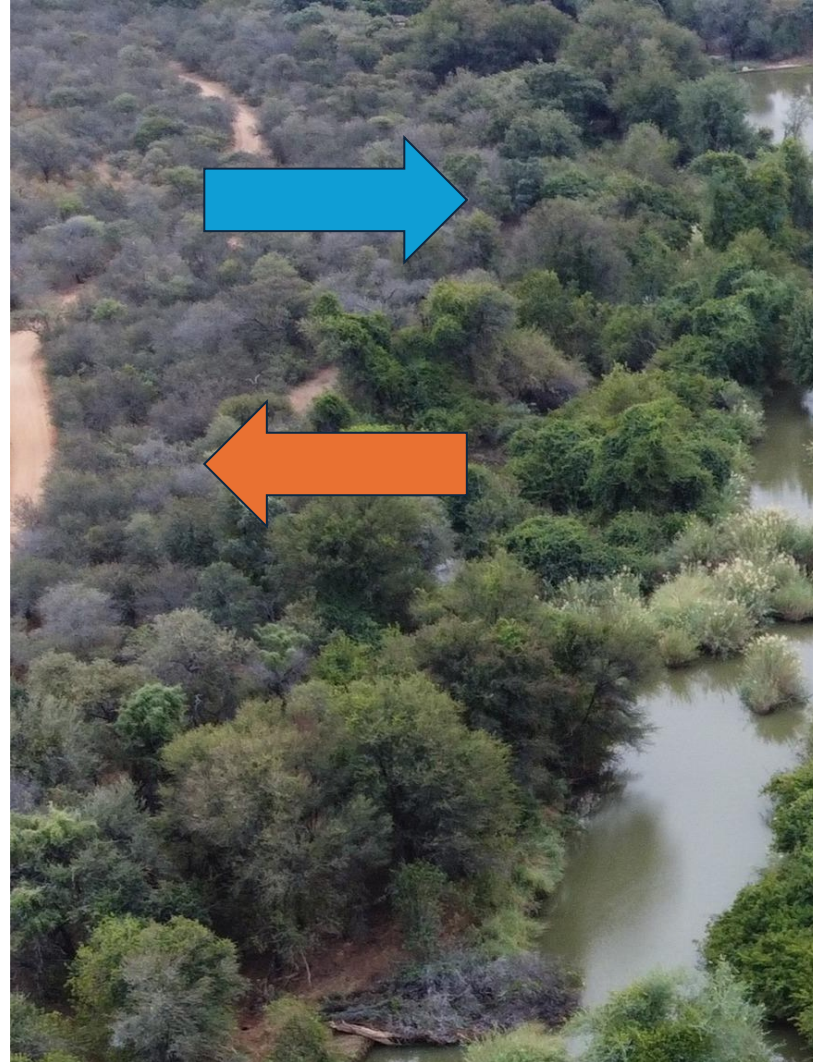
## Maximum number of individuals



# Movement during dry season



Common Scimitarbill



Southern Masked Weaver

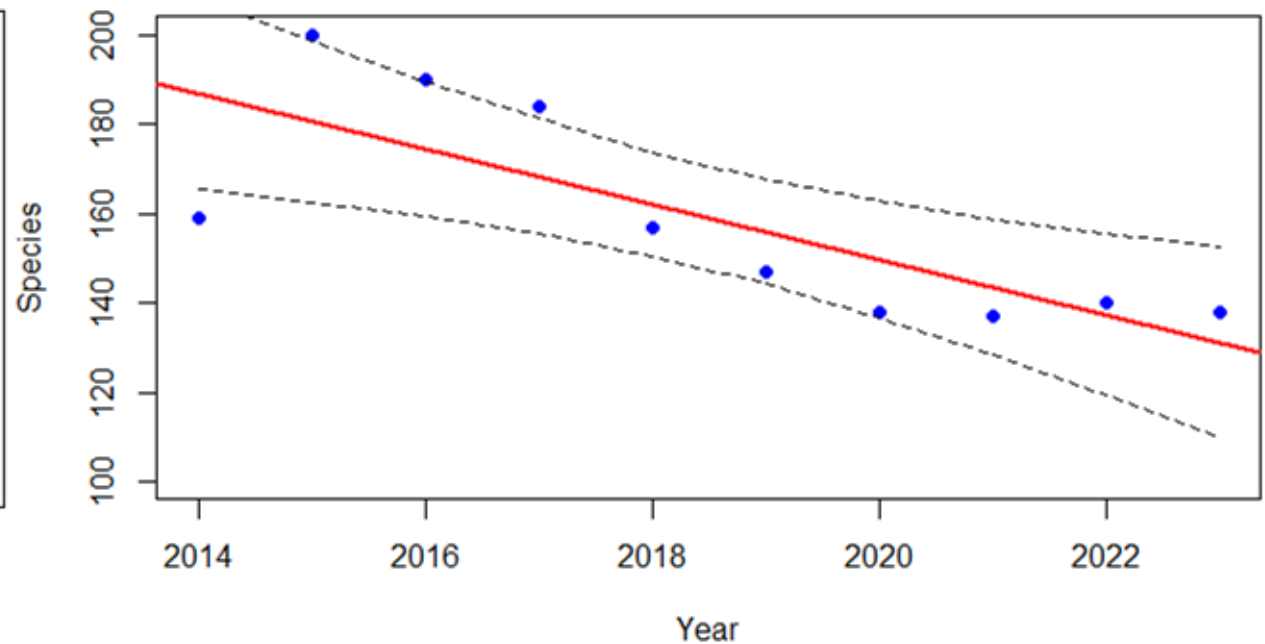
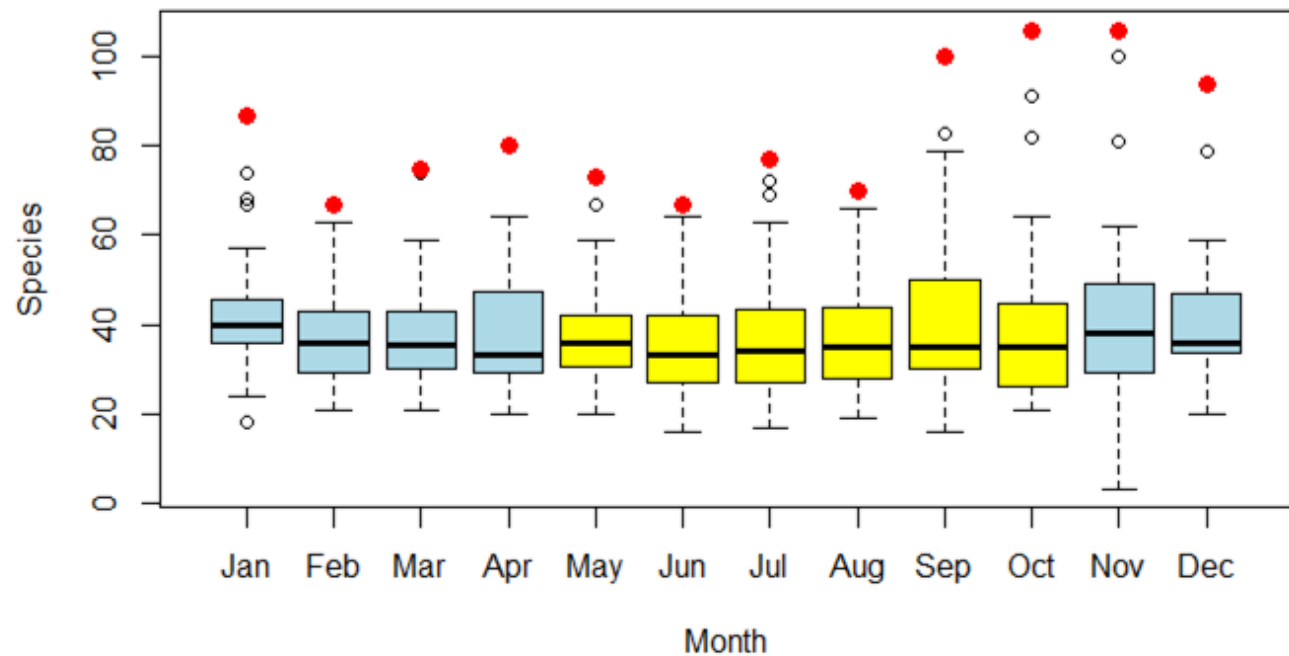


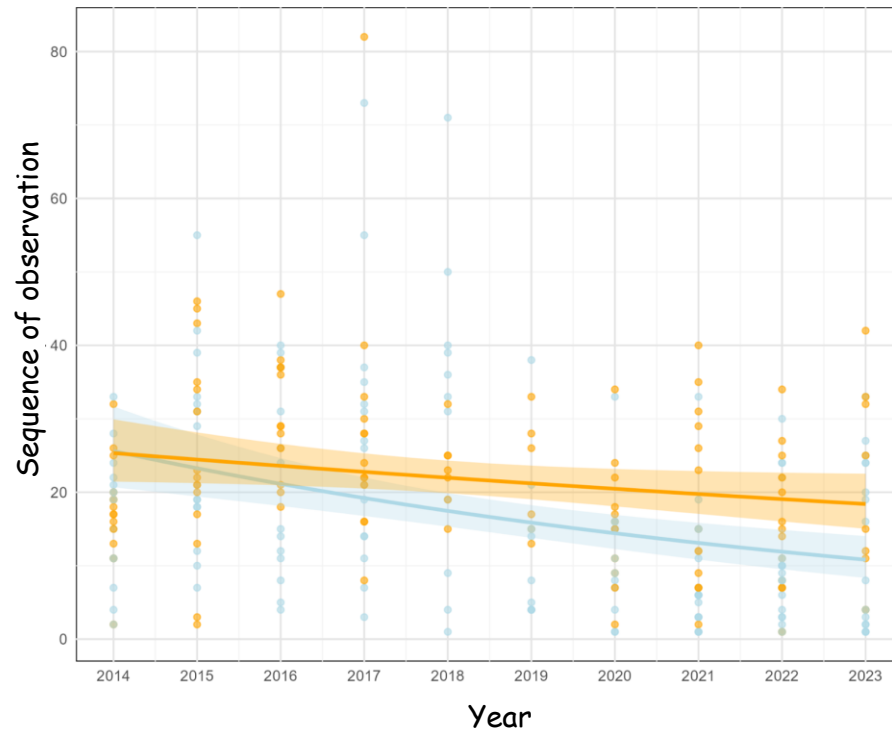
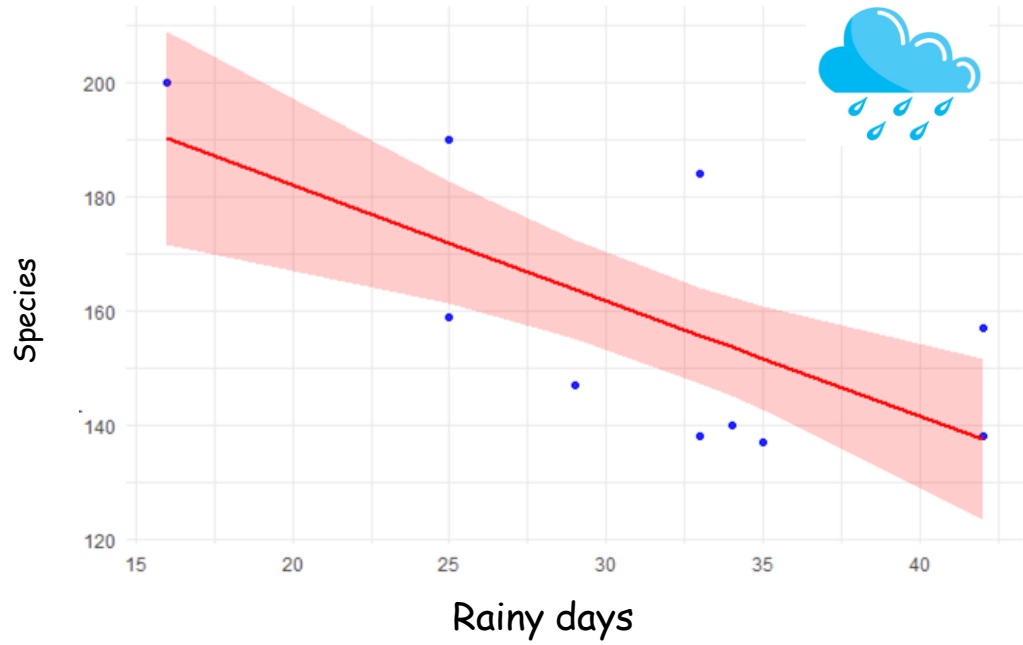
White-billed Buffalo Weaver

To woodland

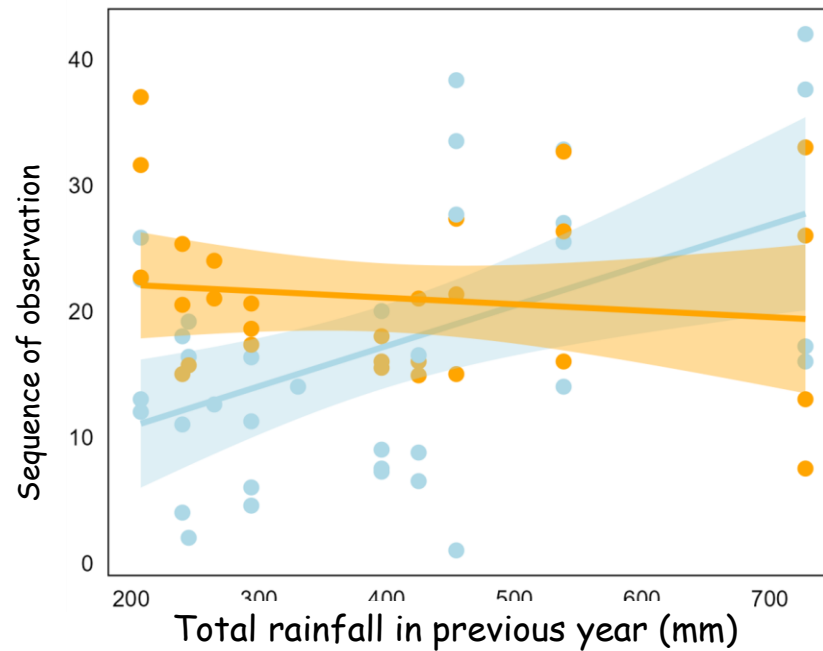
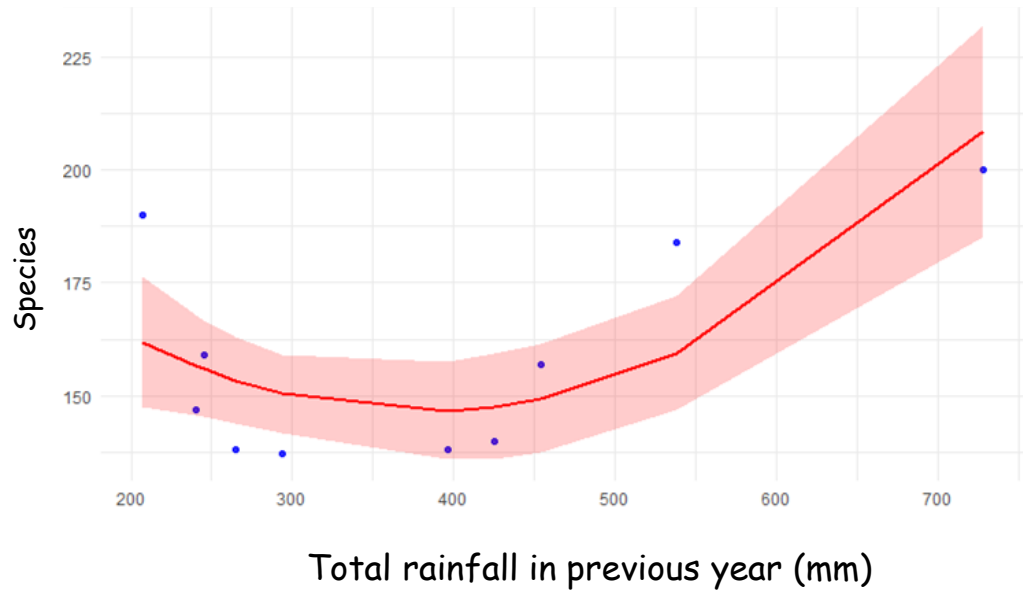
To shrubland

# Long term-trends





Tawny-flanked prinia  
(*Prinia subflava*)



Season

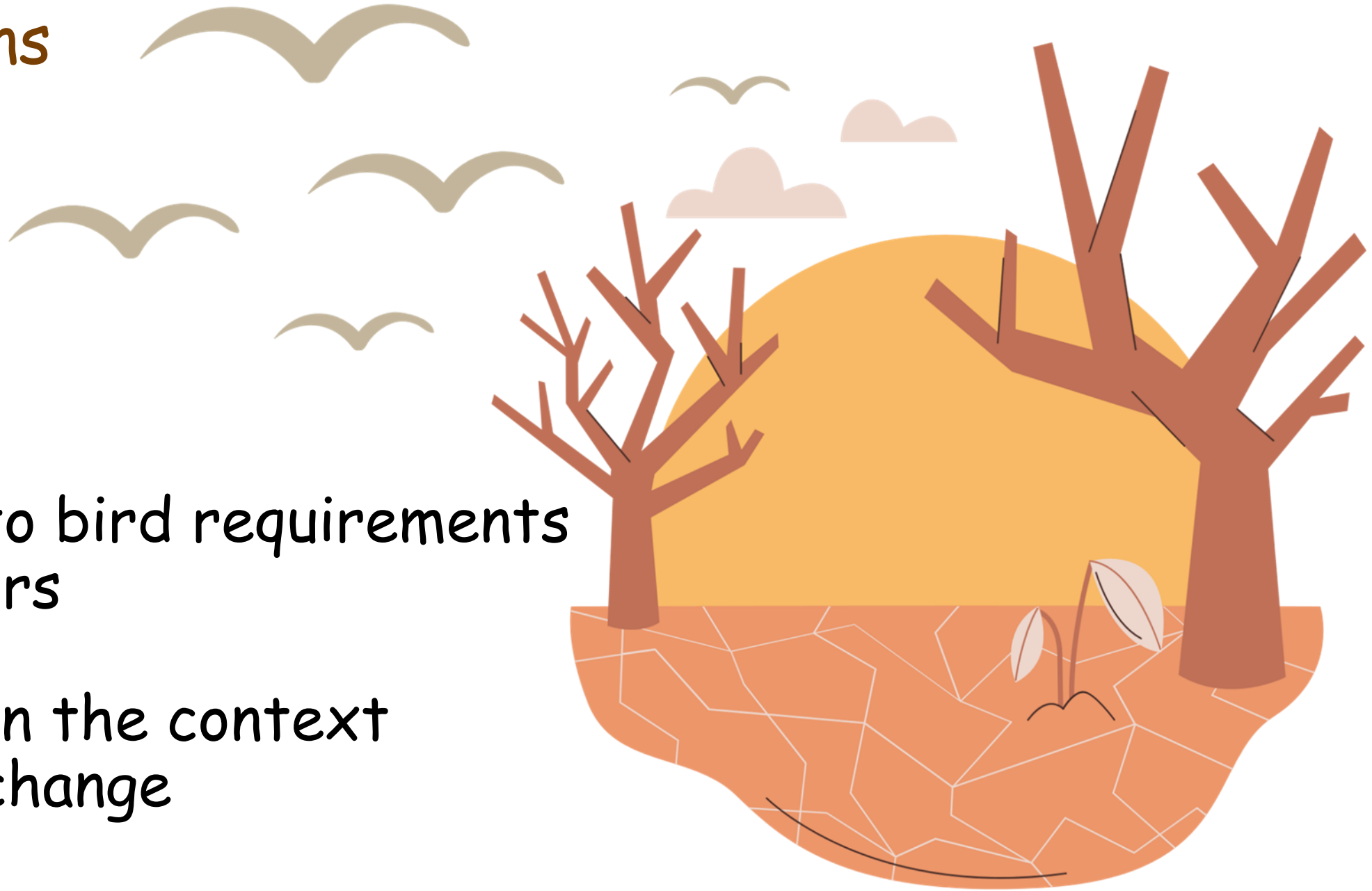
- Wet
- Dry

\*Sequence = negatively correlated with relative abundance

# Implications

Insights into bird requirements  
and behaviors

Important in the context  
of climate change





Thank you for your attention!

The project was funded by Fond mobility of Charles university

Thanks belongs also to

Kel Daymond, Portia Malholdi, Anna Zelená Kubátová, David Homoláč, Martin Černý