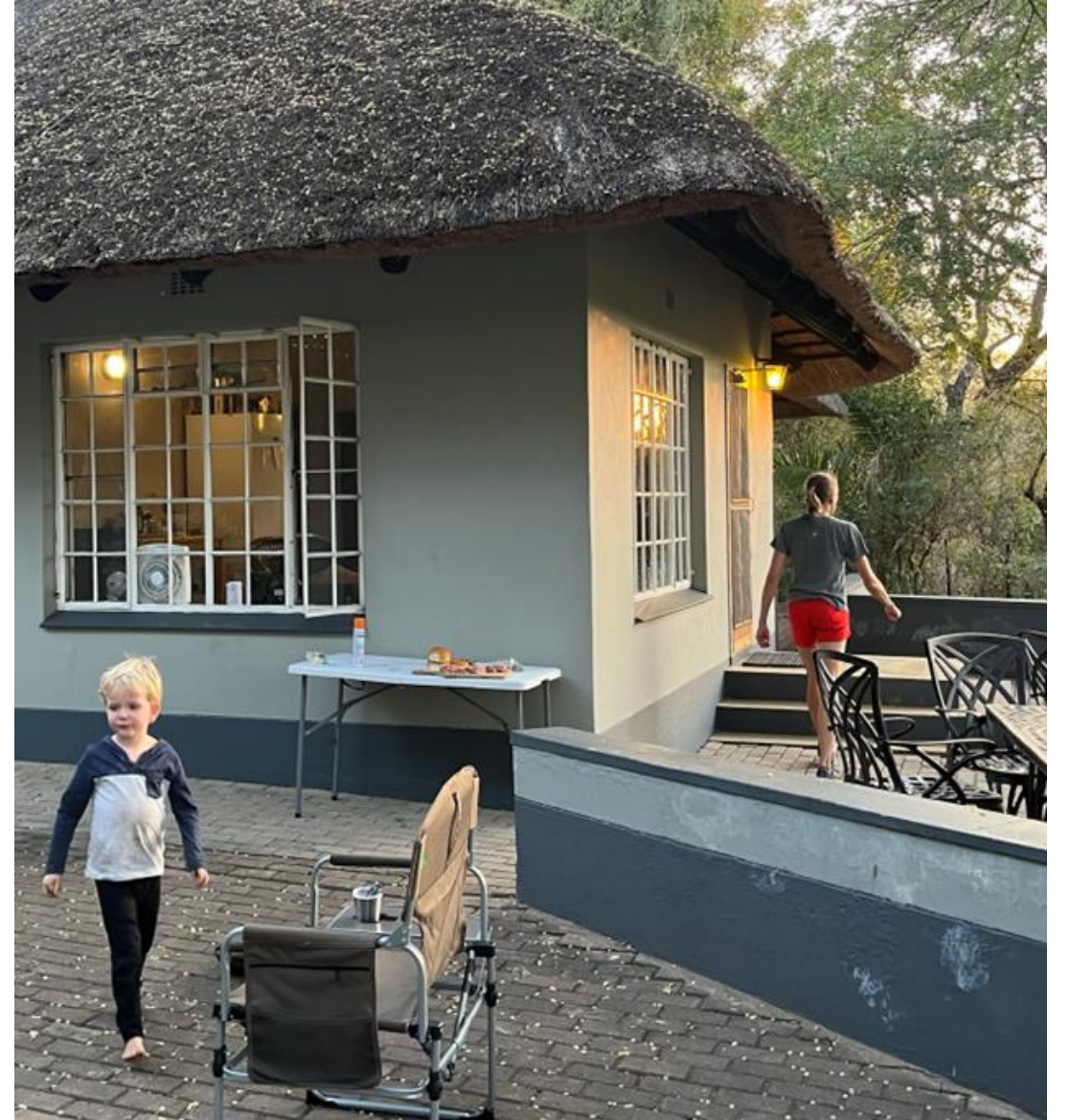




Megaherbivores Facilitate Large Grazing Herbivores & Suppress Small Mammals

By the BROWSE Crew

McCleery, Fletcher, Kruger, Monadjem, Tye, Wigley-Coetsee,
Jones, Mhlava, Jones, Bijl, Hartfelder



NEWINS-ZIEGLER HALL
SCHOOL OF FOREST
RESOURCES AND CONSERVATION
INSTITUTE OF FOOD AND
AGRICULTURAL SCIENCES

UF
Newins Ziegler

Meditations for Mortals

Four Weeks to Embrace
Your Limitations and
Finally Make Time
for What Counts



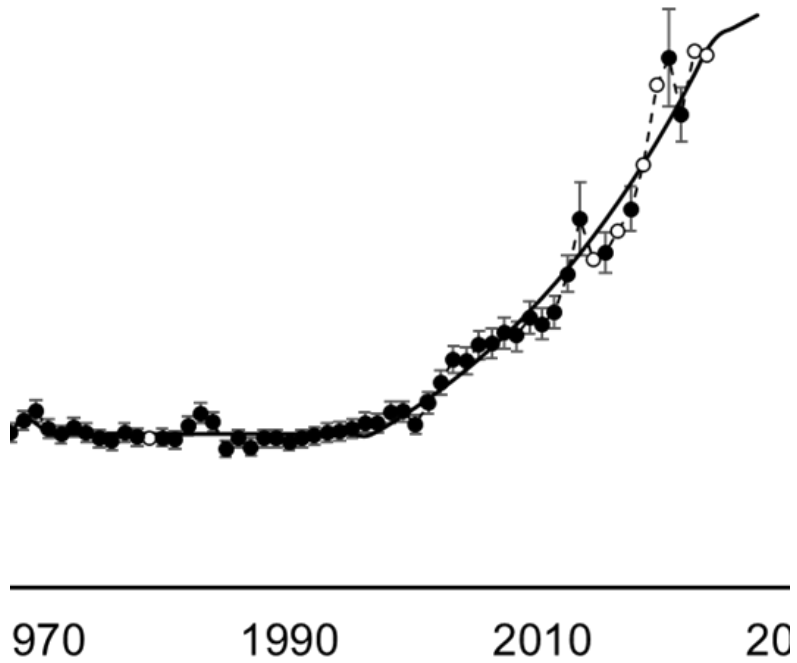
Oliver
Burkeman

Author of *Four Thousand Weeks*



“There are no
solutions, only
tradeoffs”

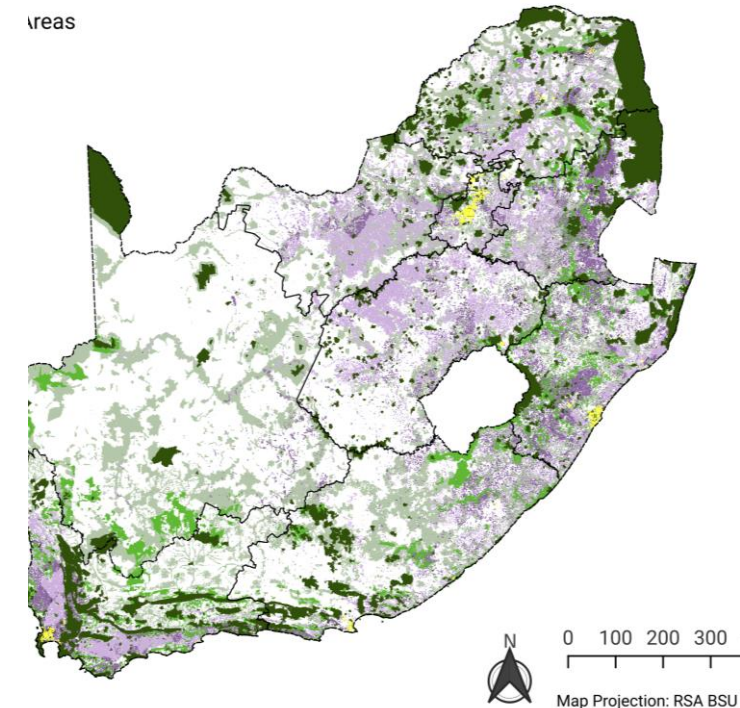
I (and probably you) have sought solutions



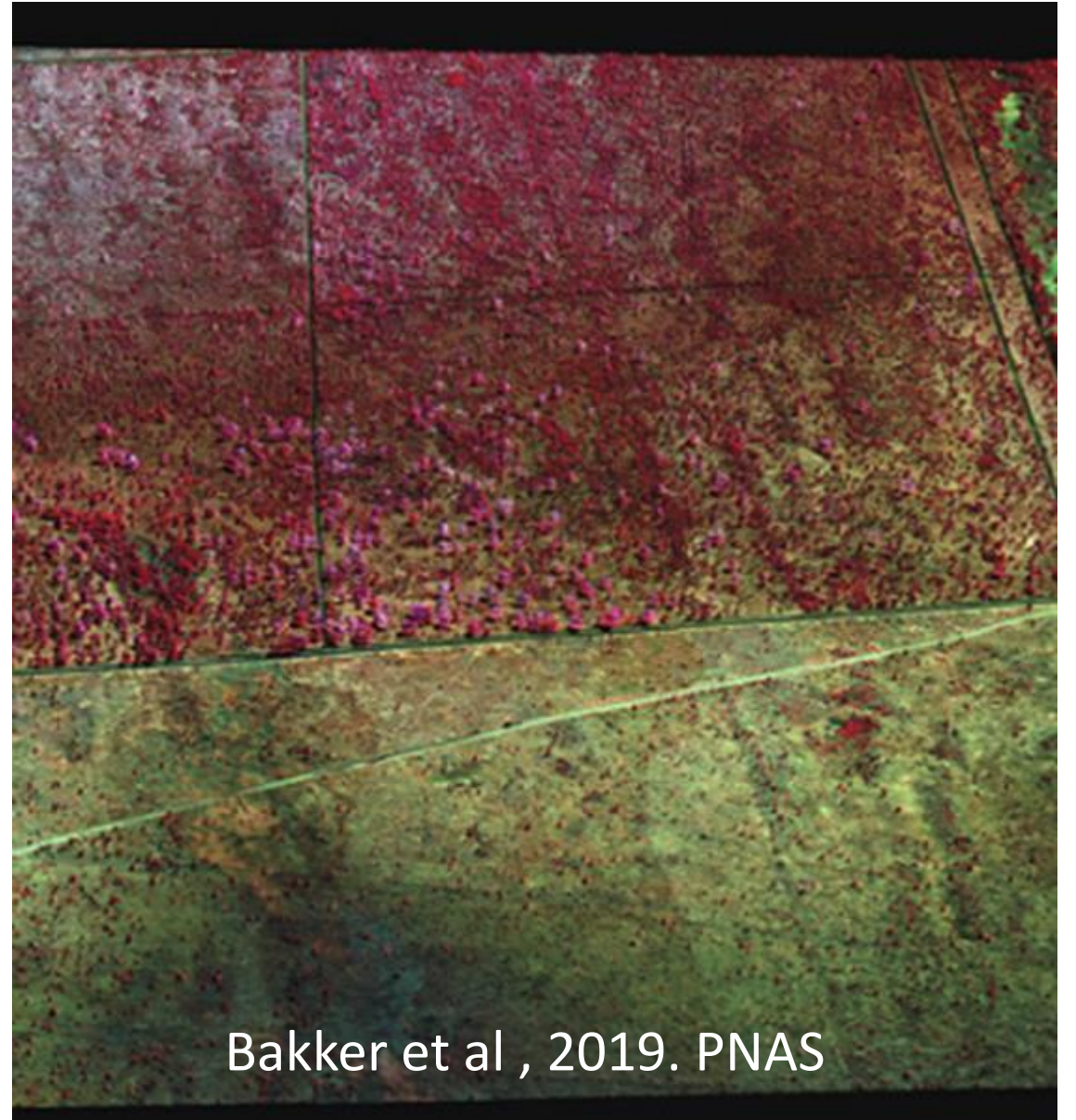
Populations



Disturbances

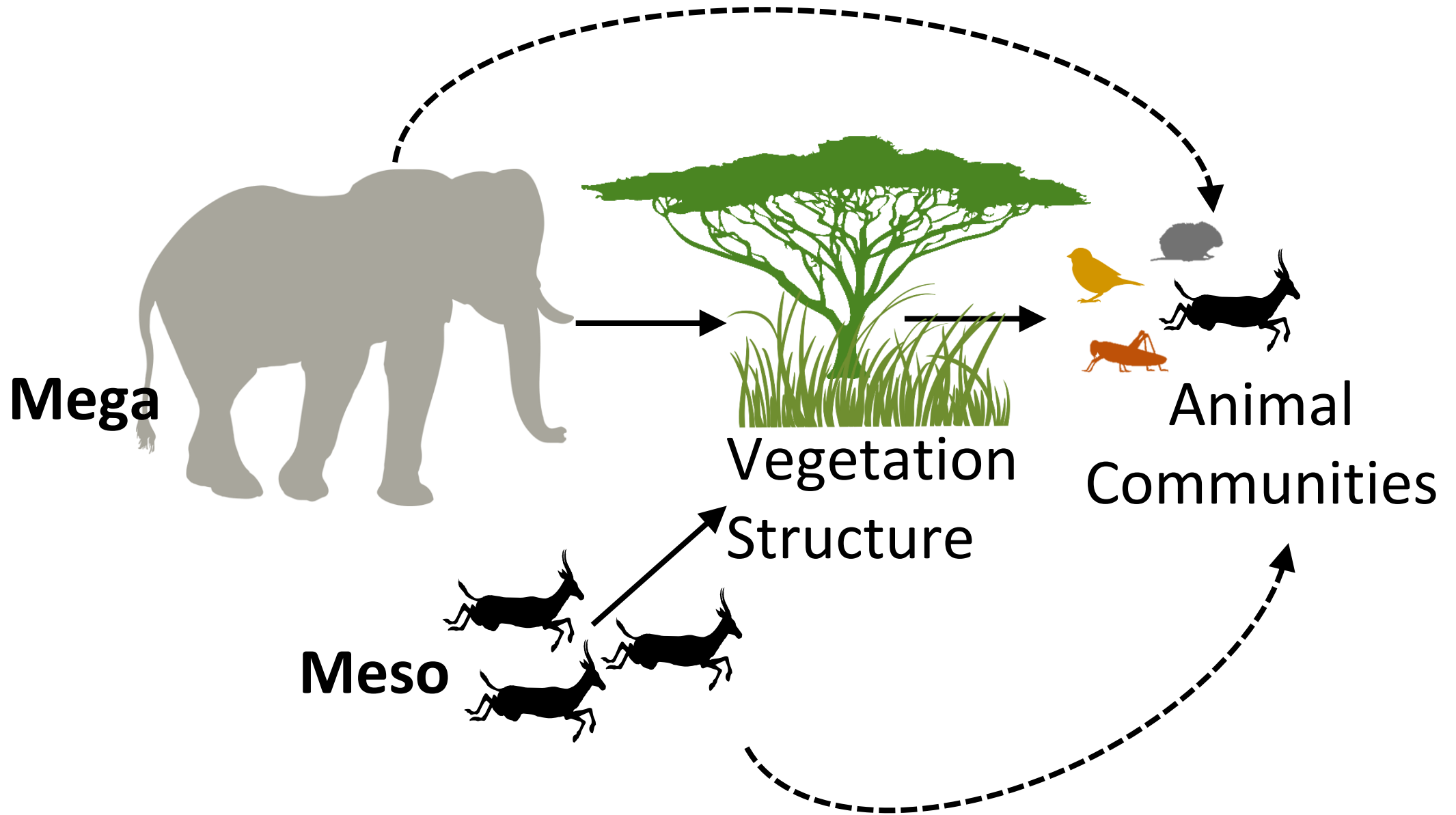


Land-uses

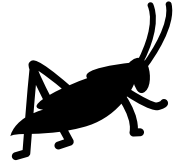


Bakker et al , 2019. PNAS

Alter animal communities



- Reduced insects



- Reduced seeds



- Game trails



- Soil compaction



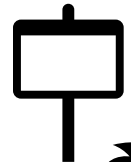
- Reduce forbs



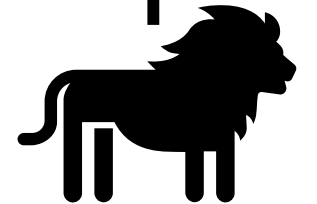
- More palatable



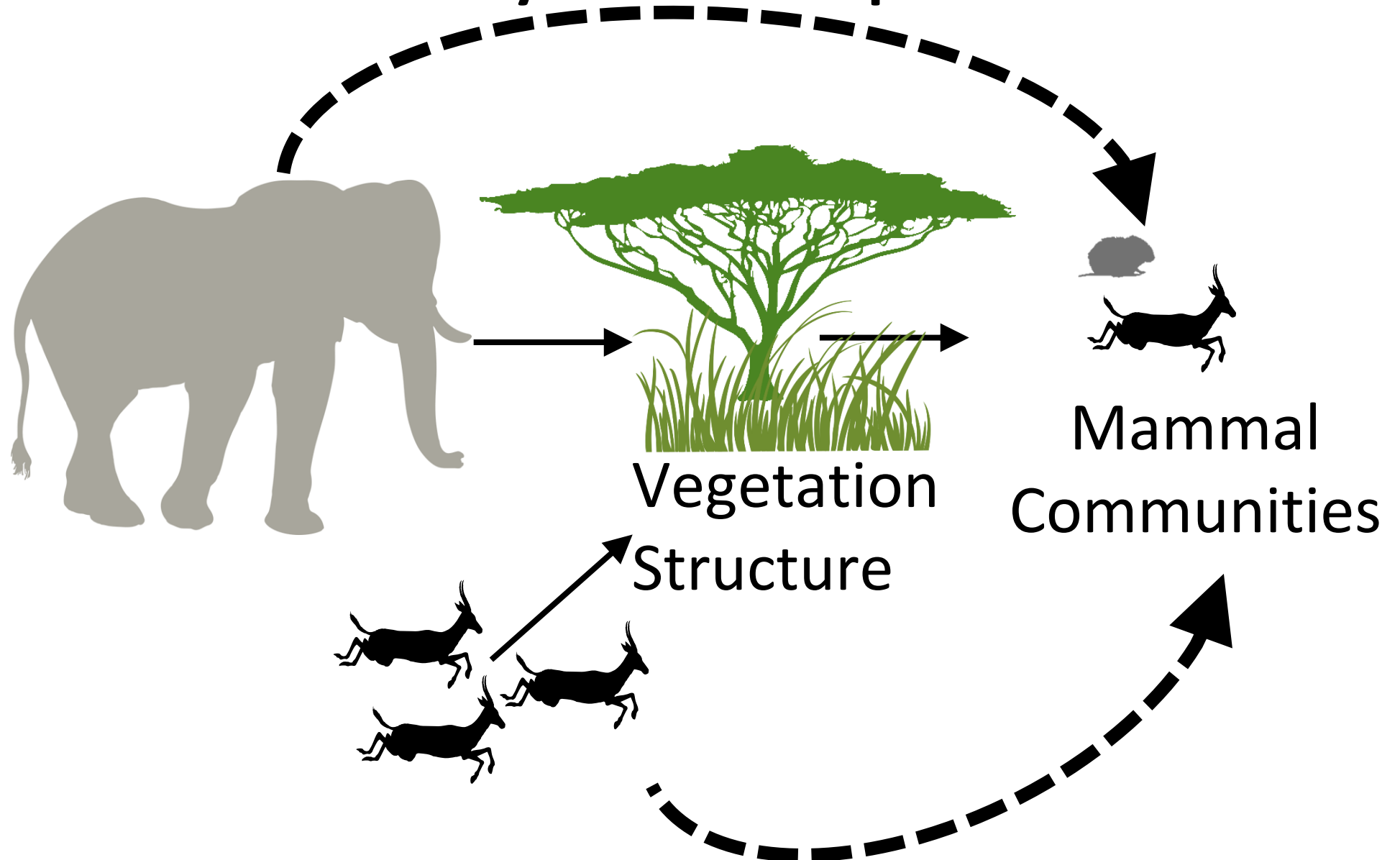
- Social cues

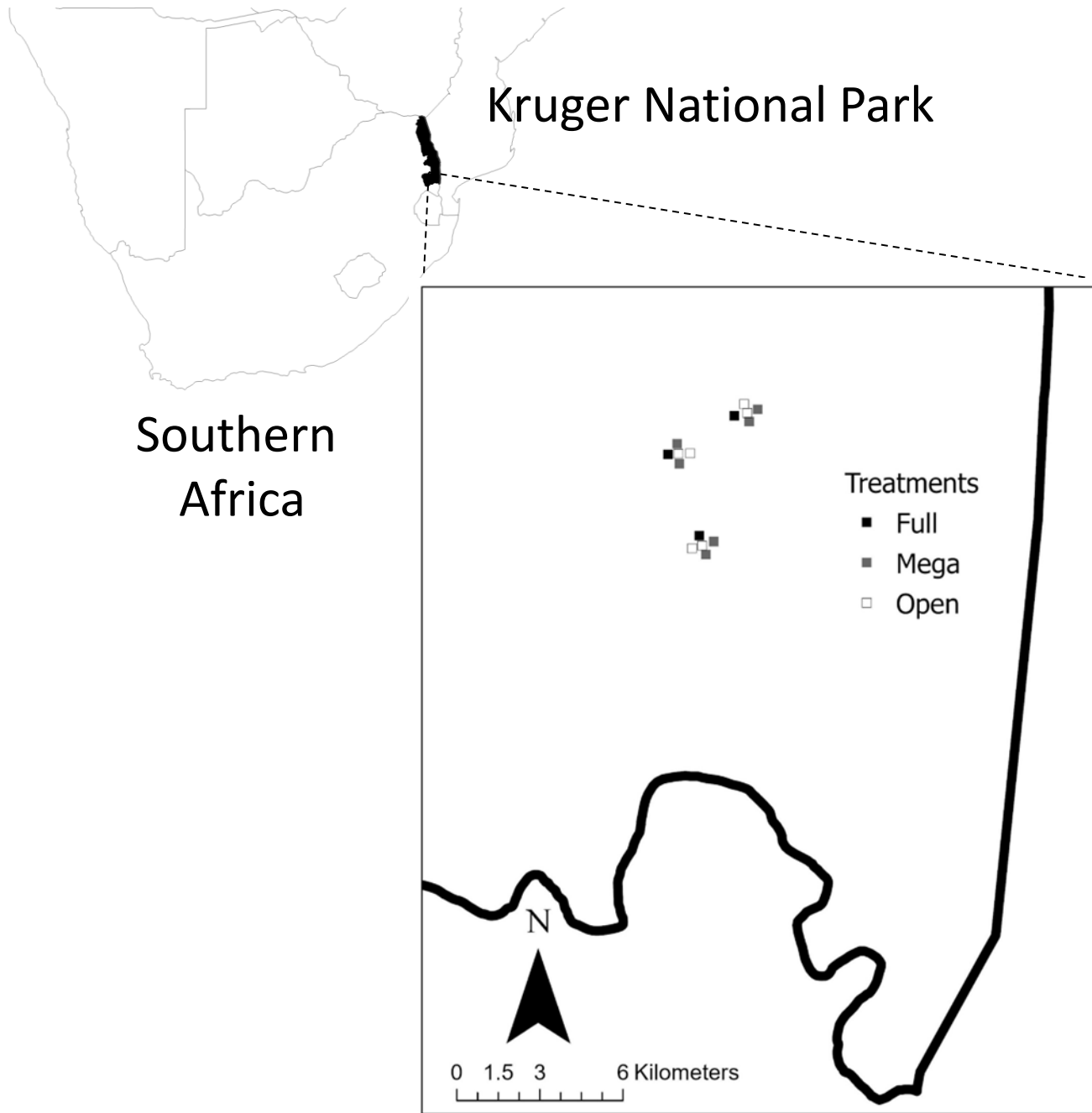


- Predator shield



Harder to Identify and Replicate





Treatments and Symbols



Full

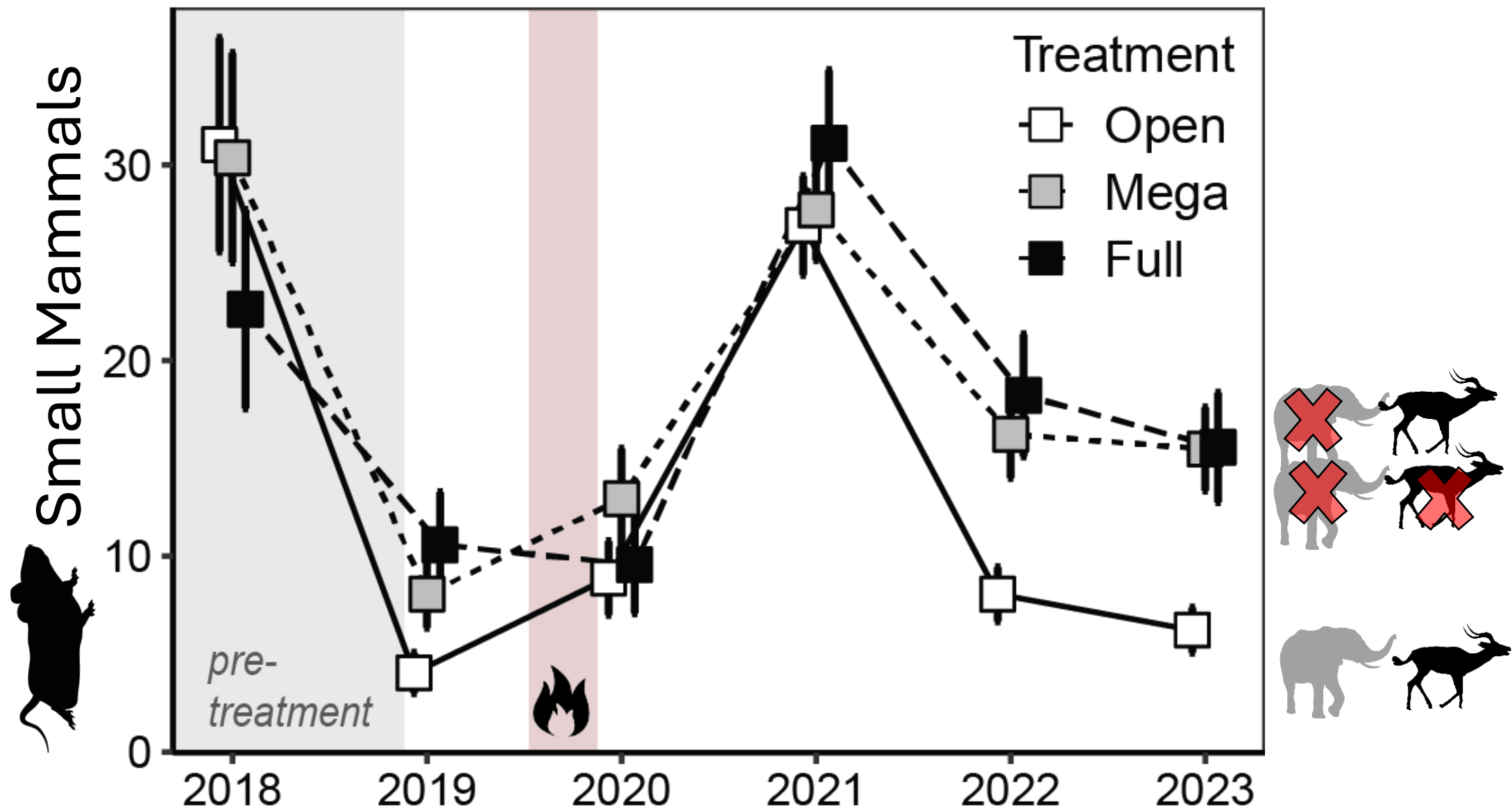


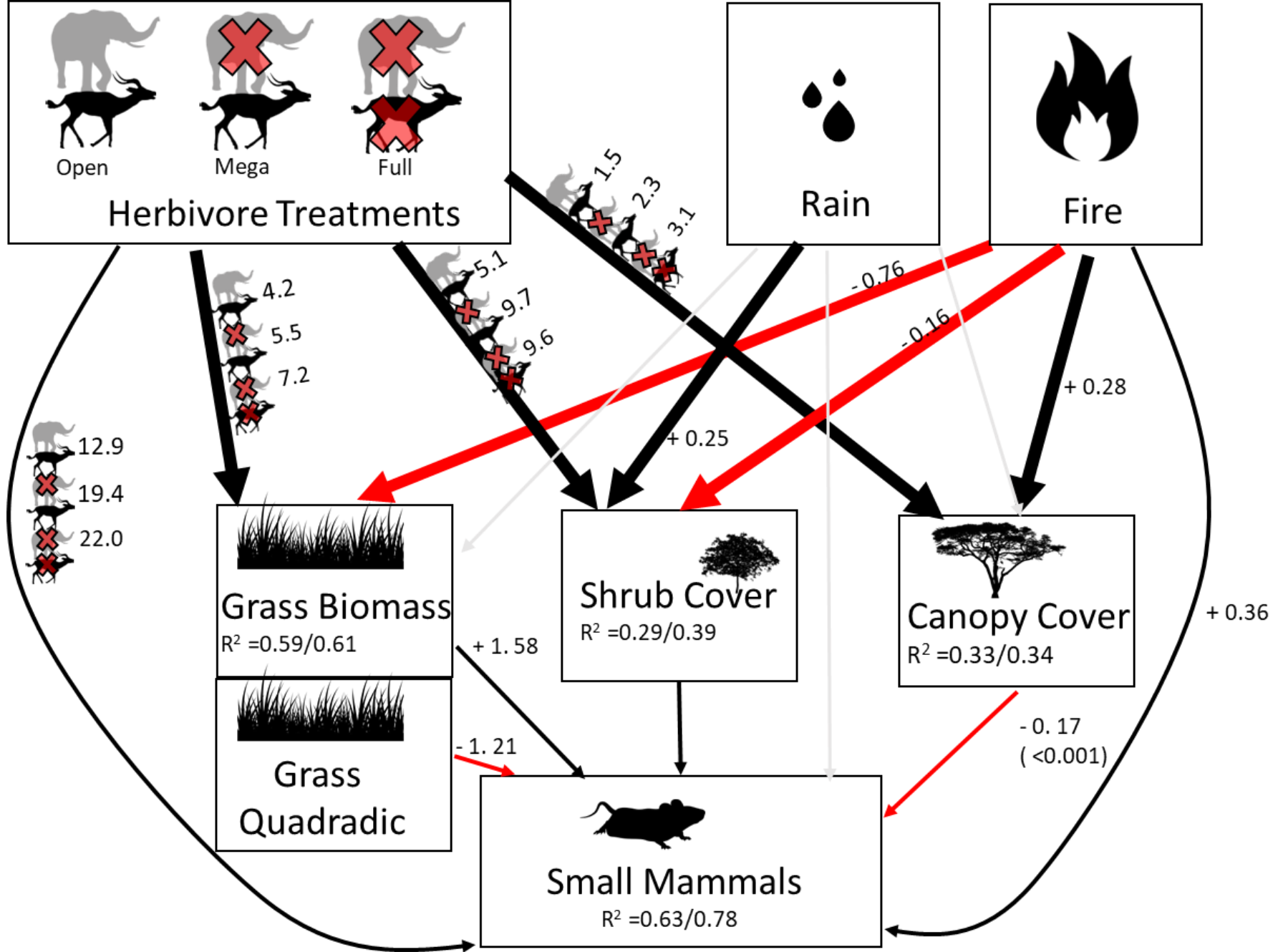
Mega

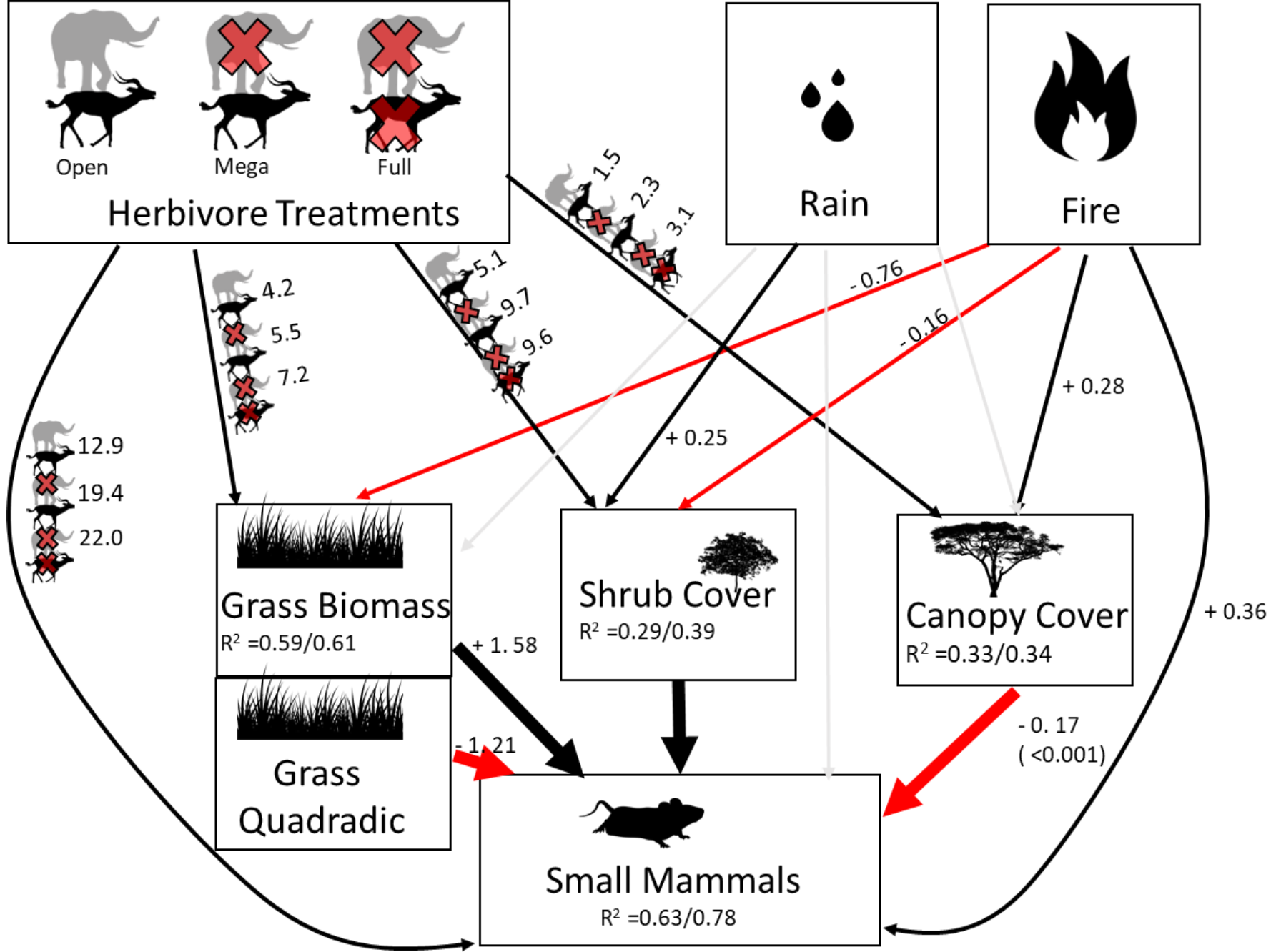


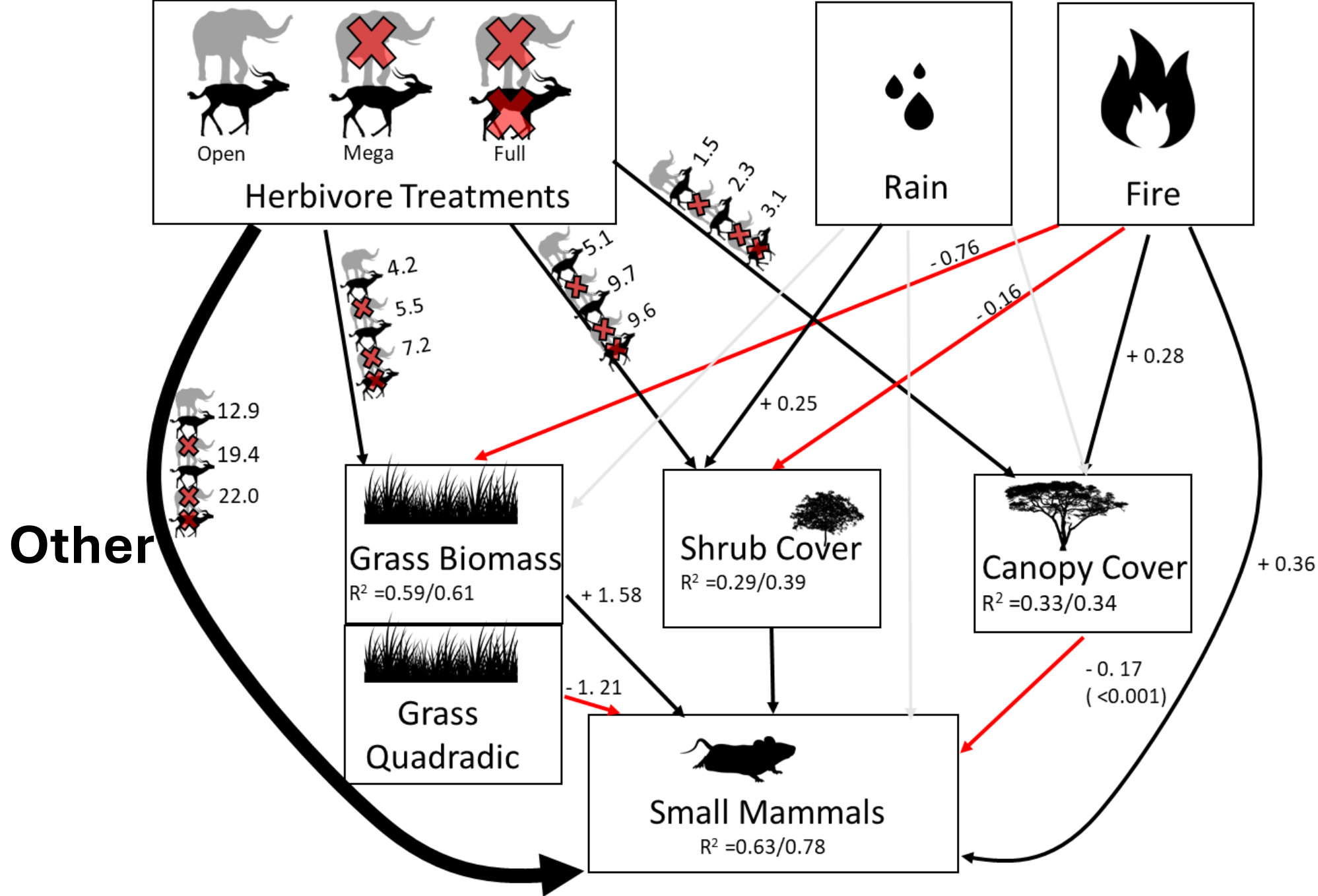
Open



(a)









 vs.  = 33% decrease

Mega Open

Canopy



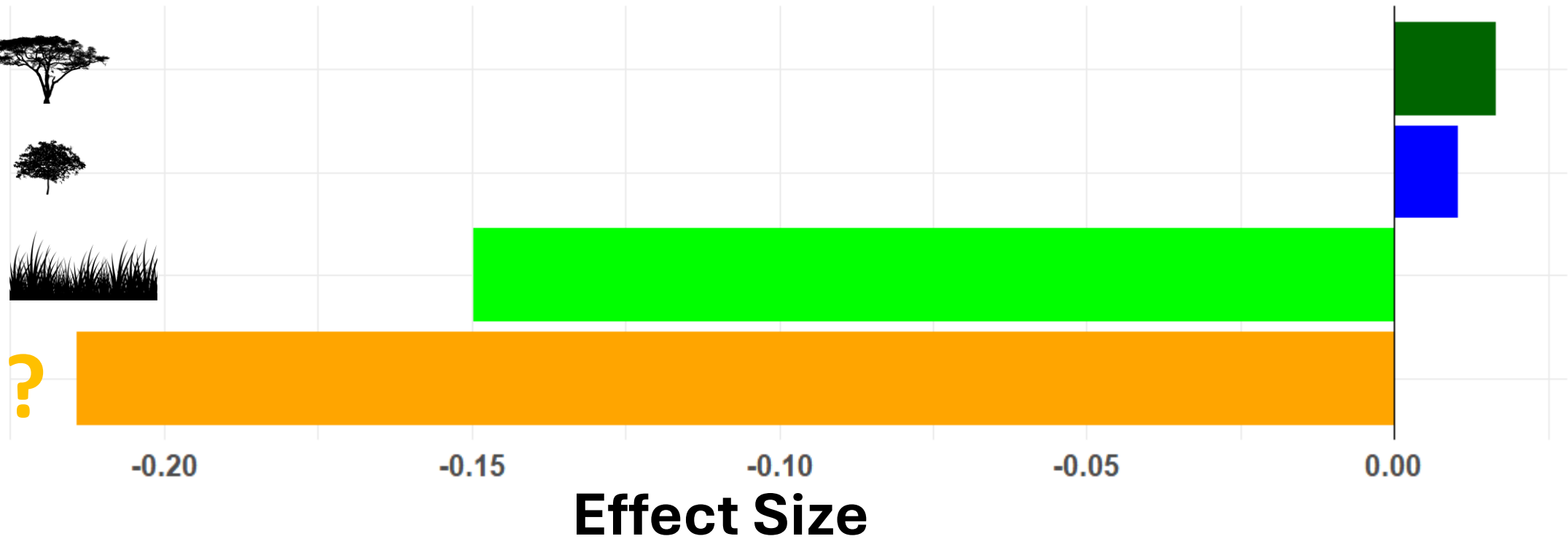
Shrub



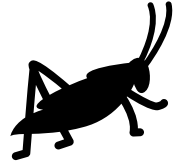
Grass



Other



- Reduced insects



- Reduced seeds



- Game trails



- Soil compaction



- Reduce forbs



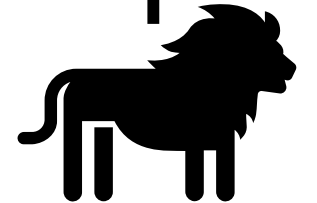
- More palatable



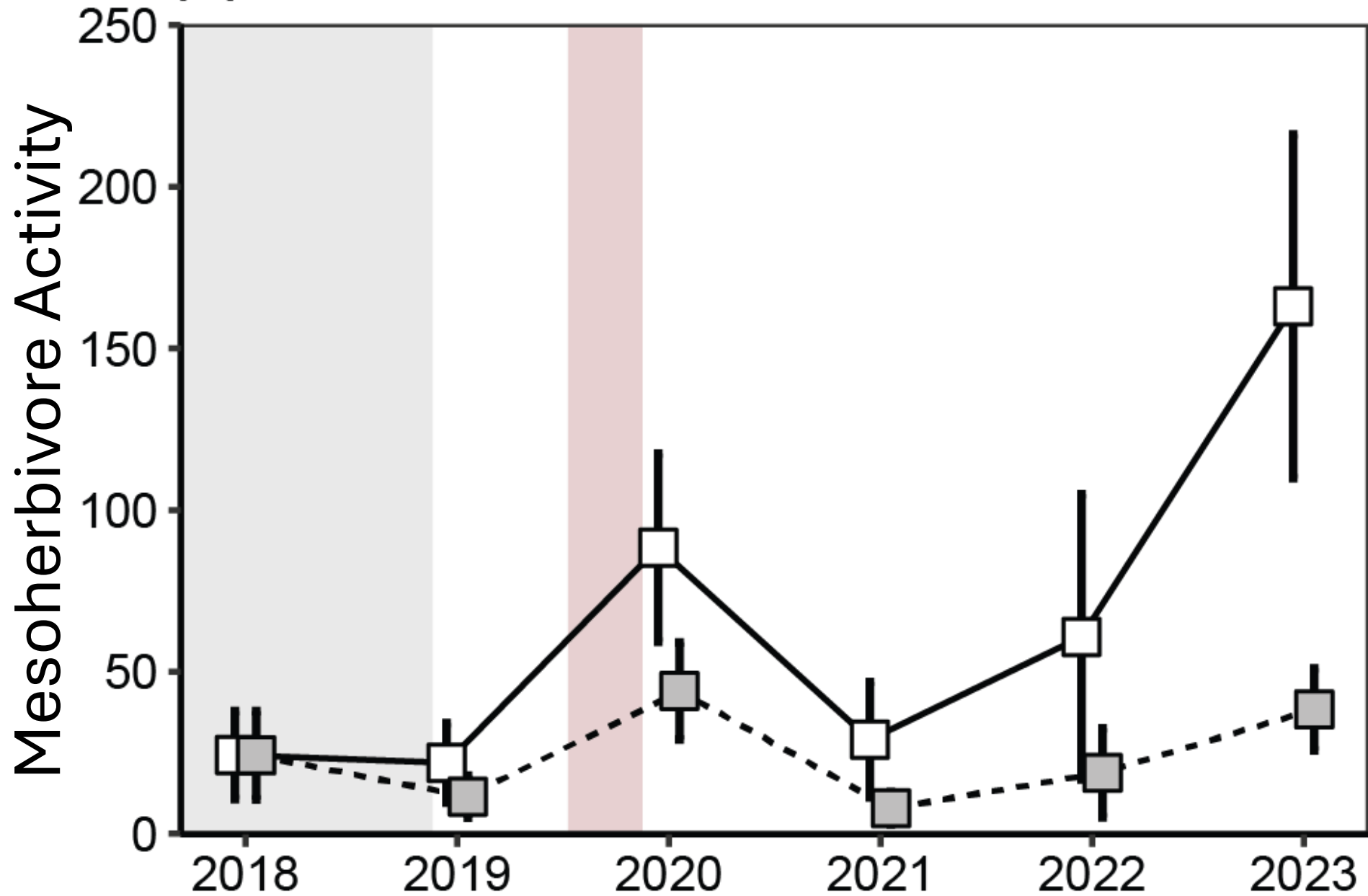
- Social cues

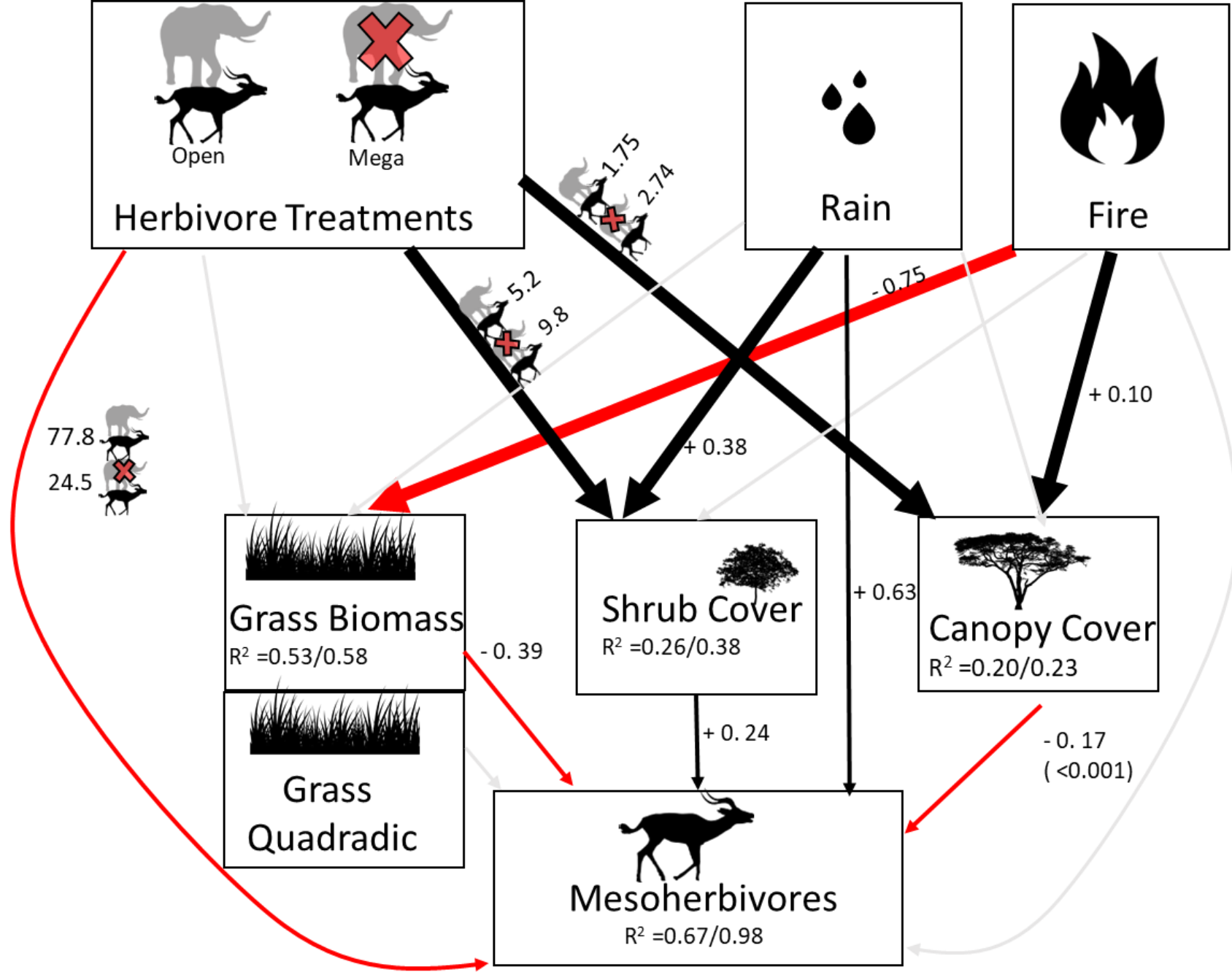


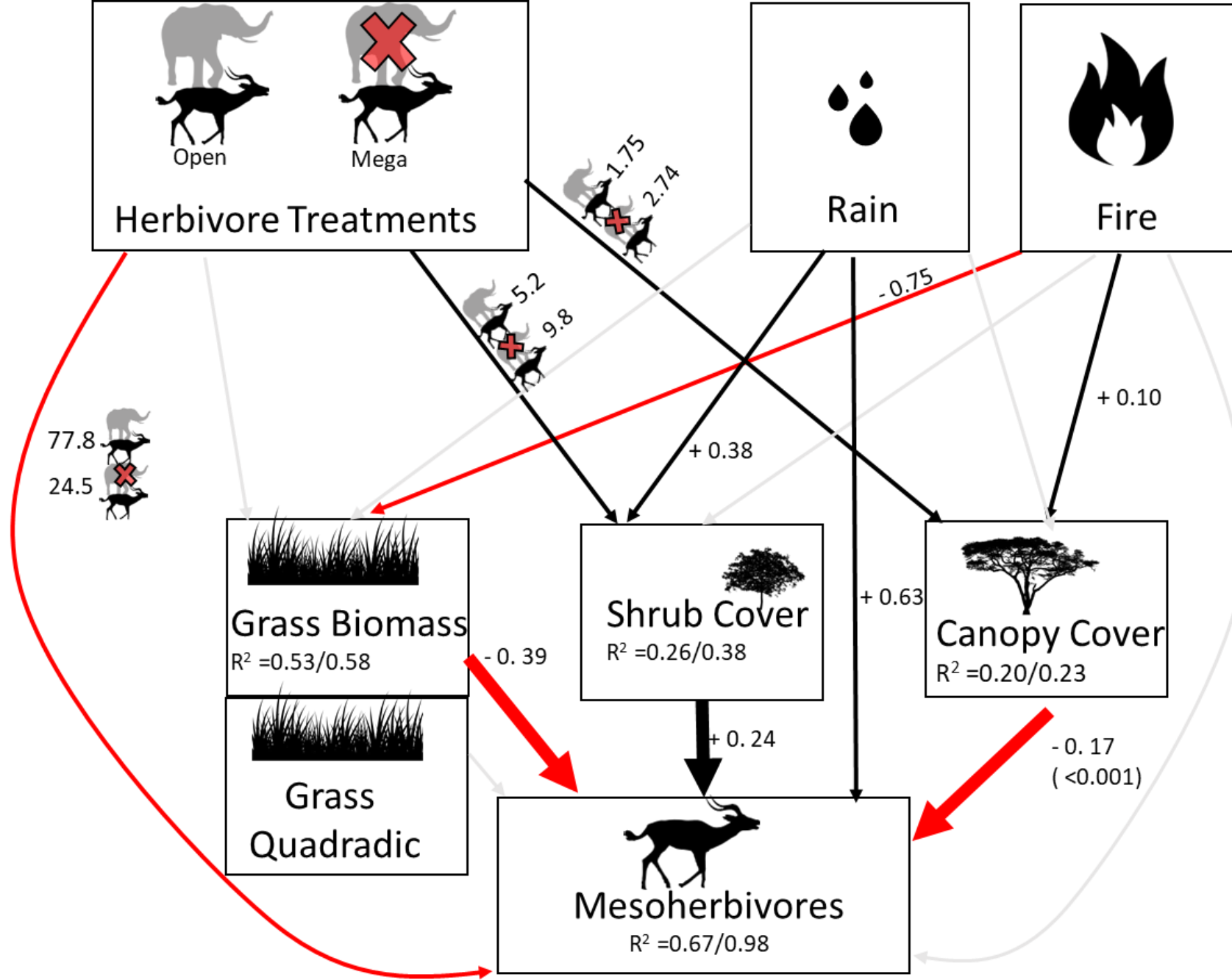
- Predator shield

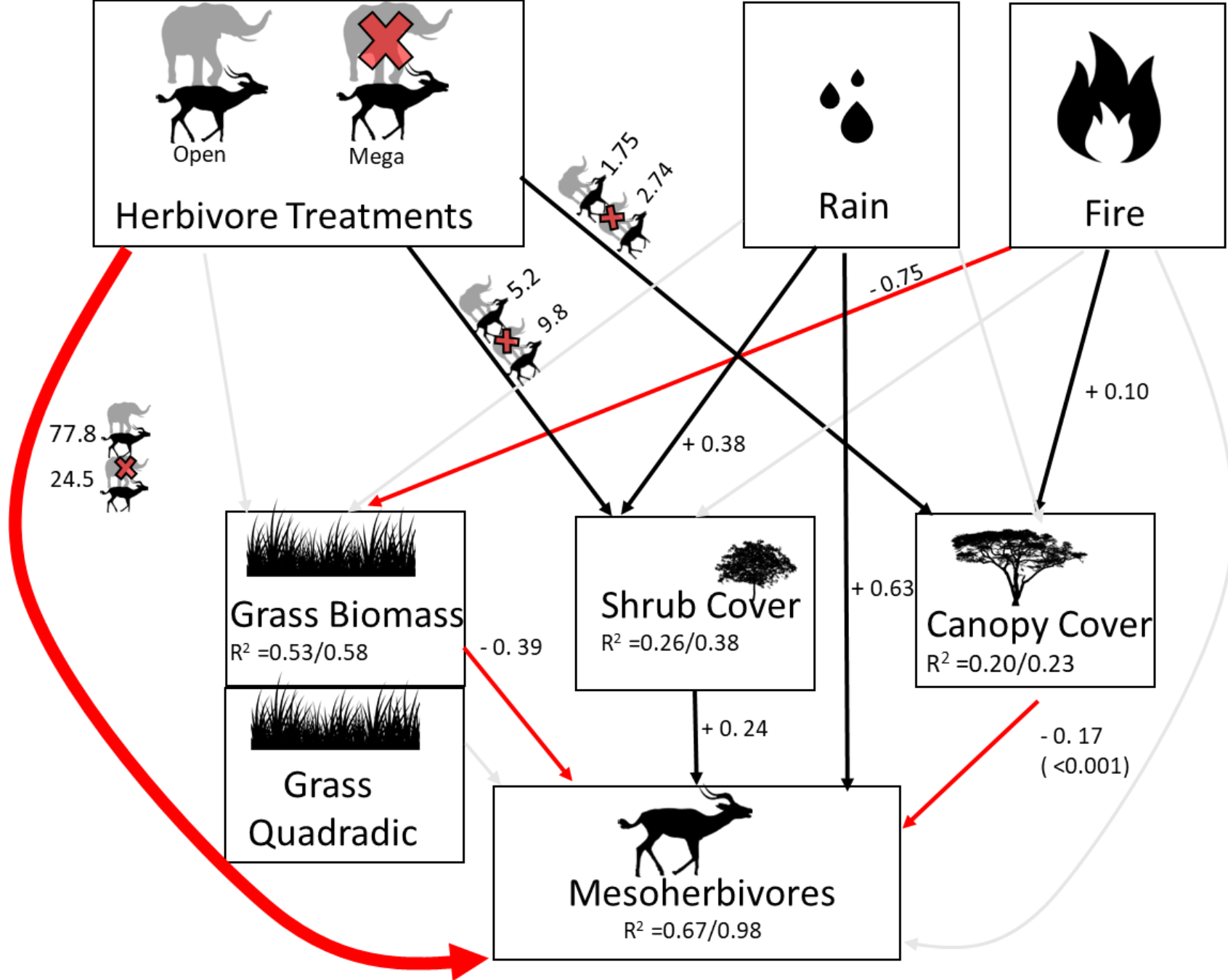




(b)

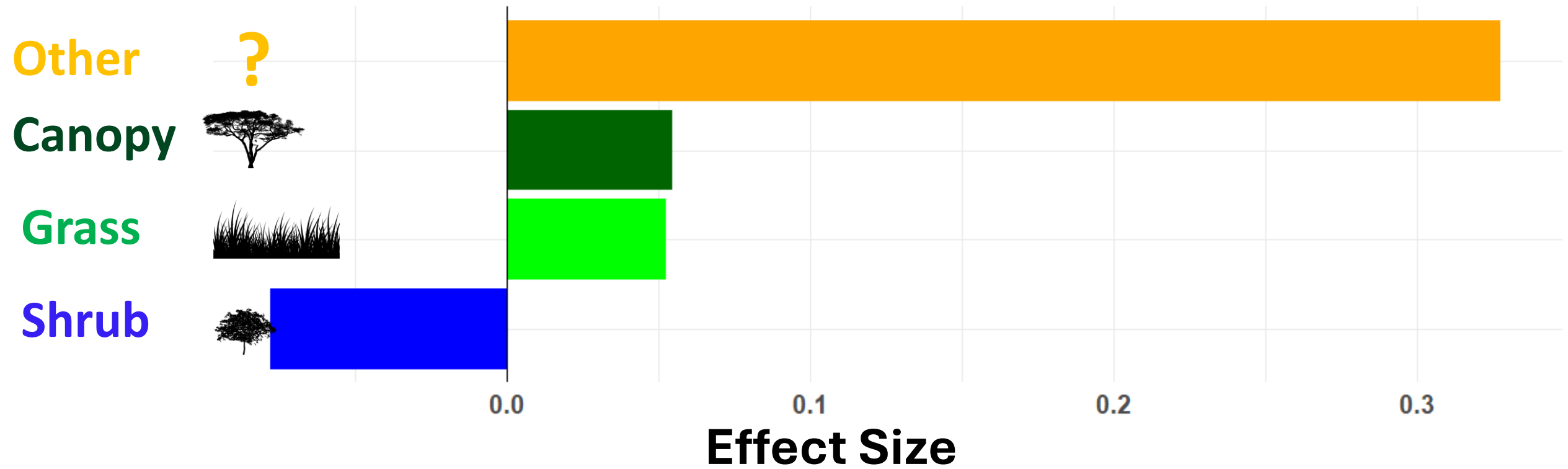




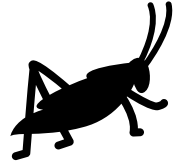




 vs.  = 218% increase



- Reduced insects



- Reduced seeds



- Game trails



- Soil compaction



- Reduce forbs



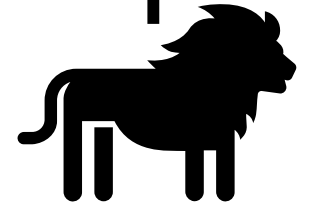
- More palatable



- Social cues



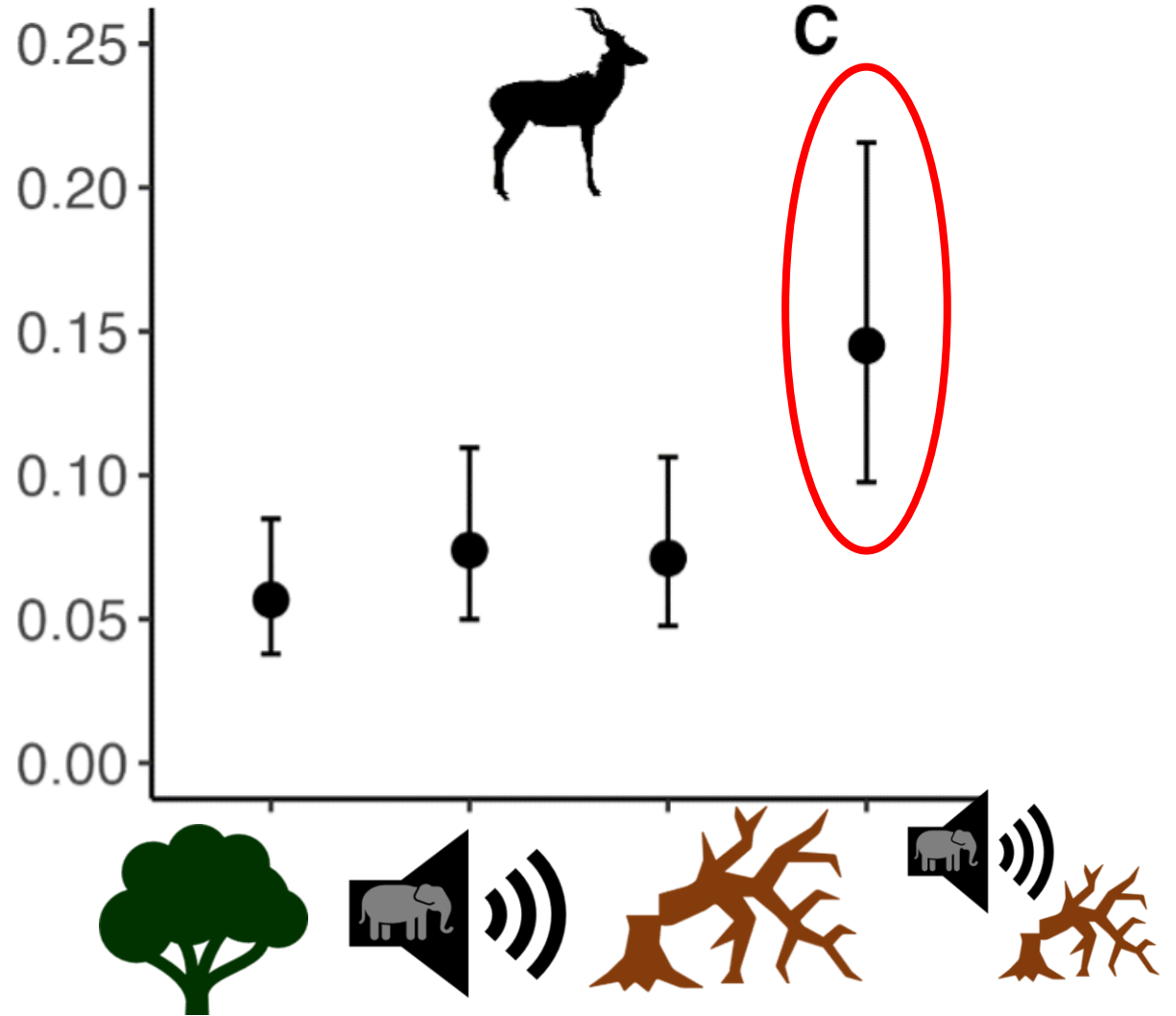
- Predator shield



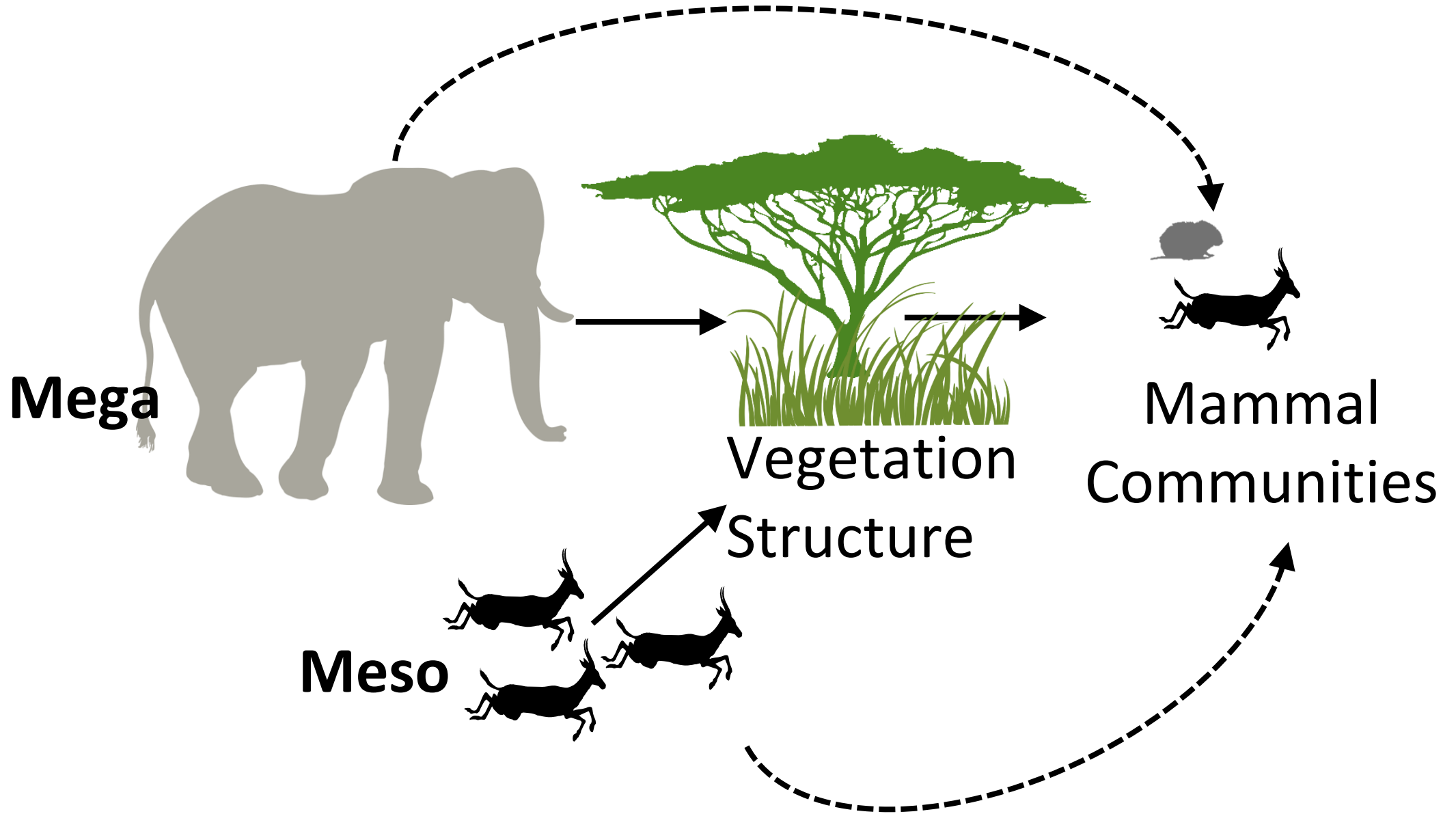
Some Herbivore Response Positively to Elephants Vocalizations



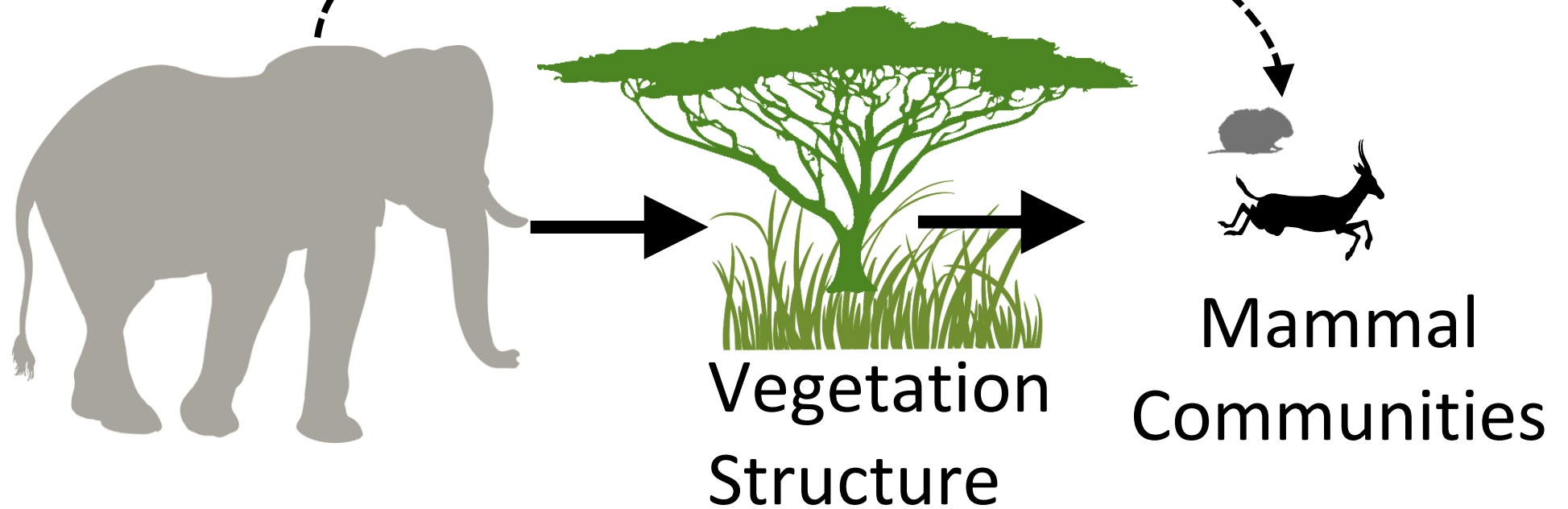
Treatment Plots



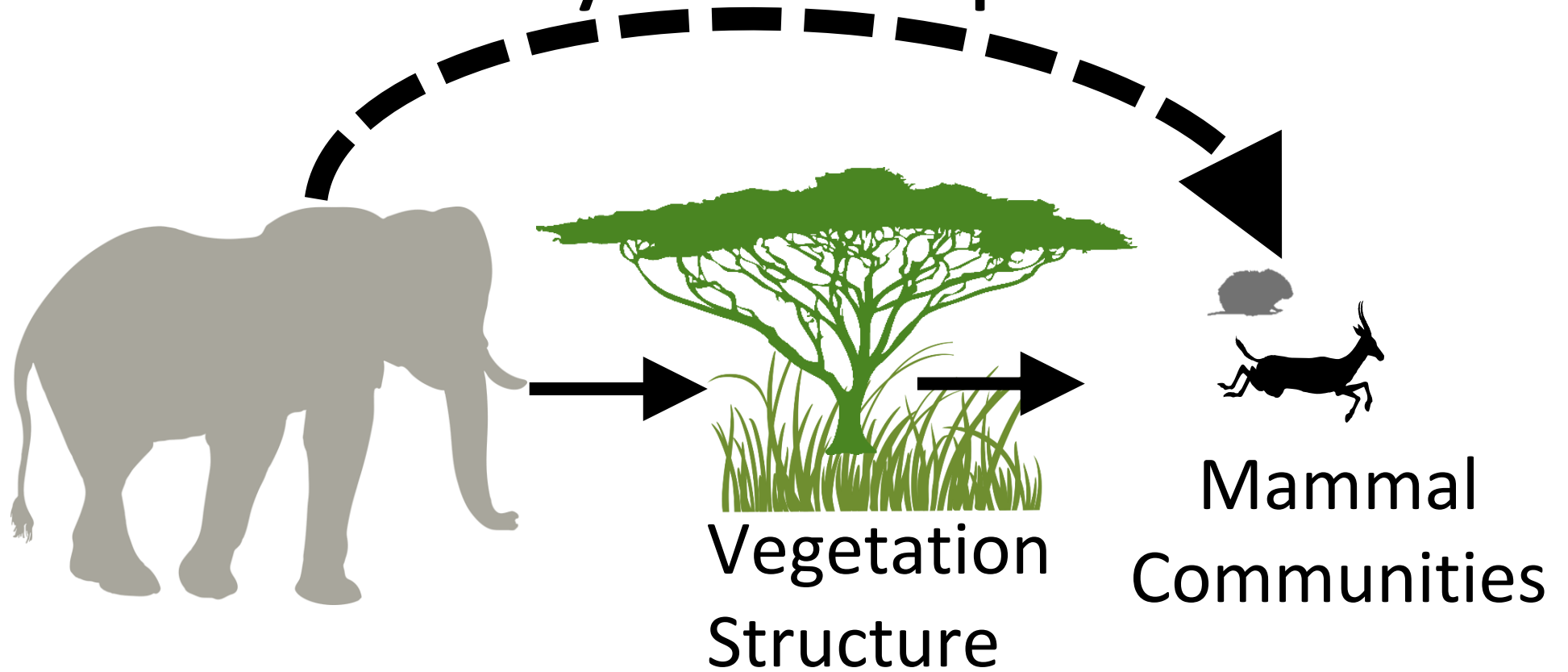
Mesoherbivores had little influence



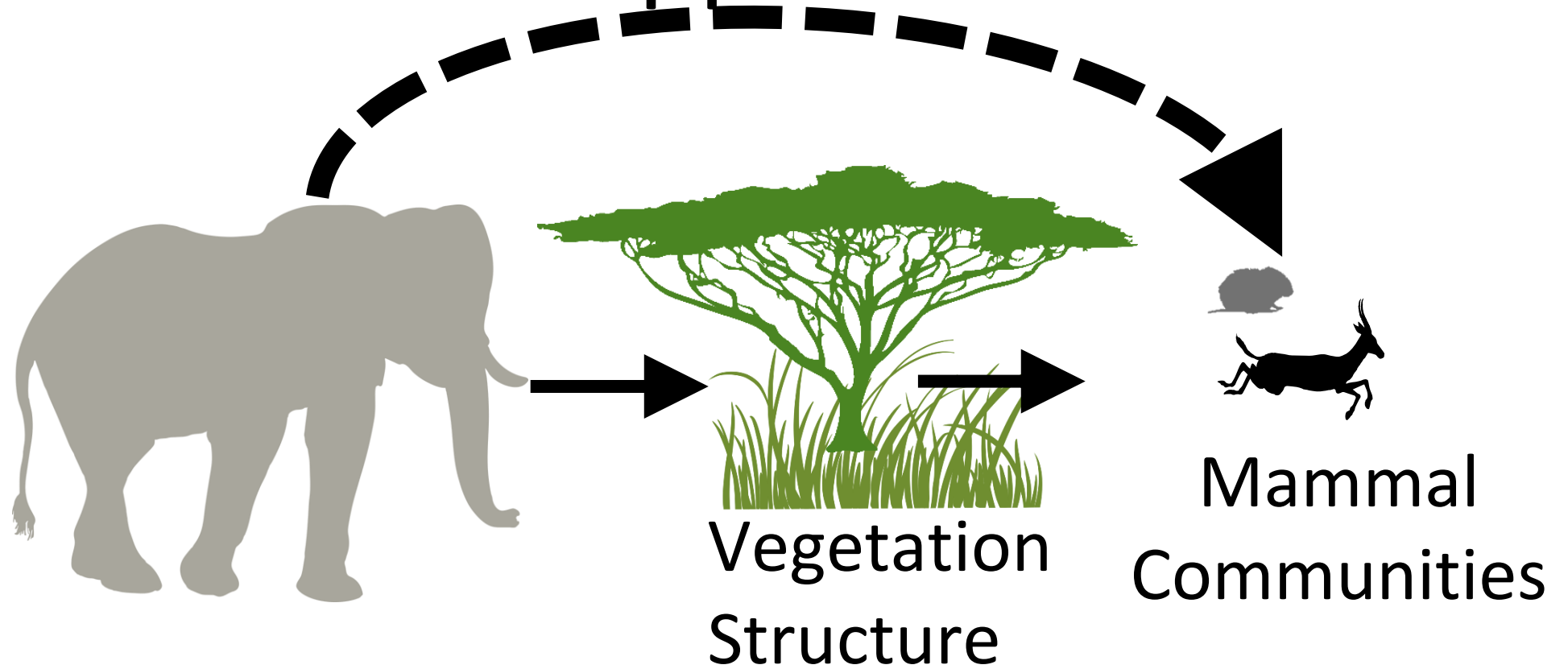
Mammals respond to Megaherbivore induced changes

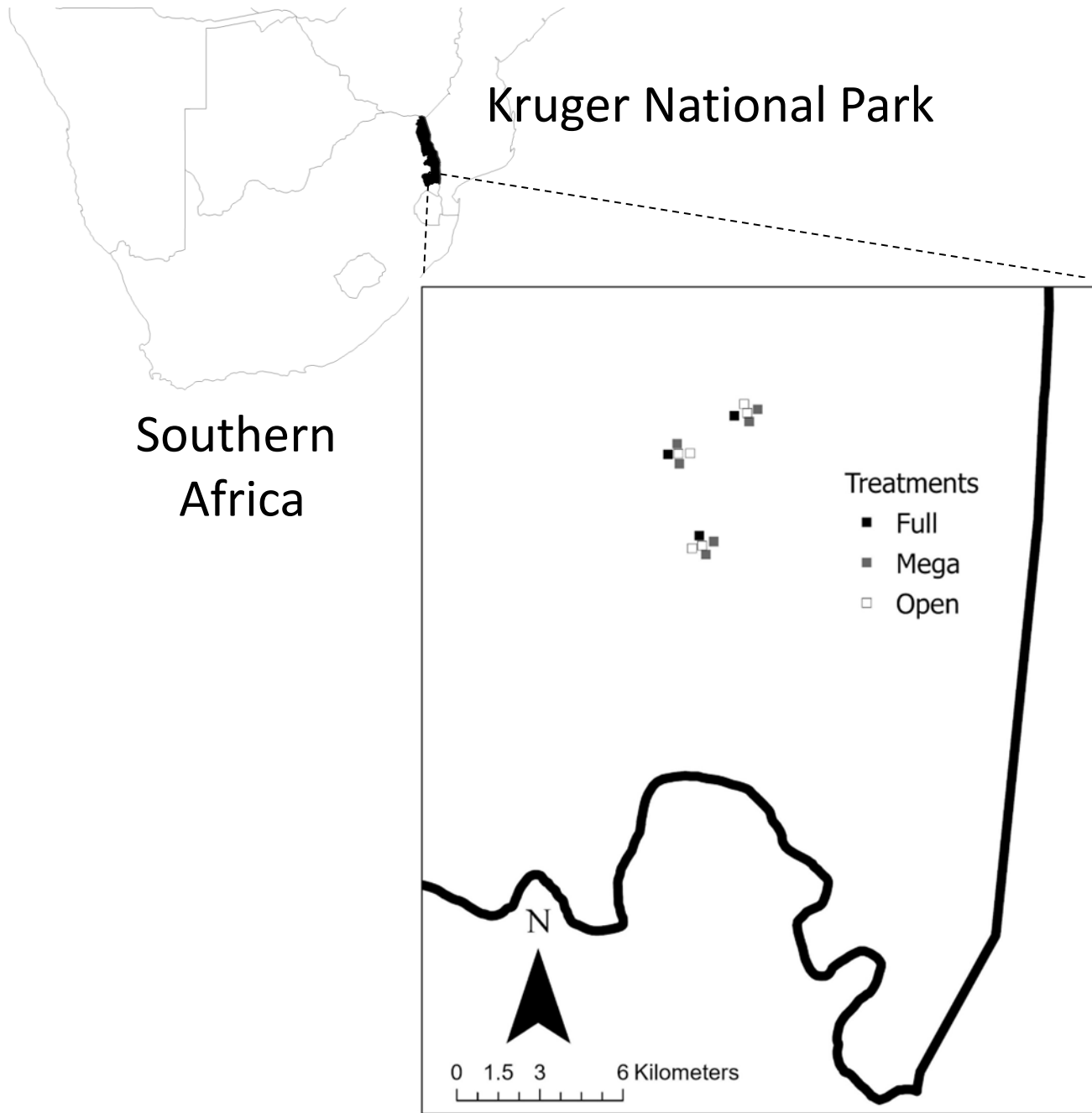


Harder to Identify and Replicate



Facilitation and Suppression





Treatments and Symbols



Full



Mega



Open



“There are no
solutions, only
tradeoffs”
