


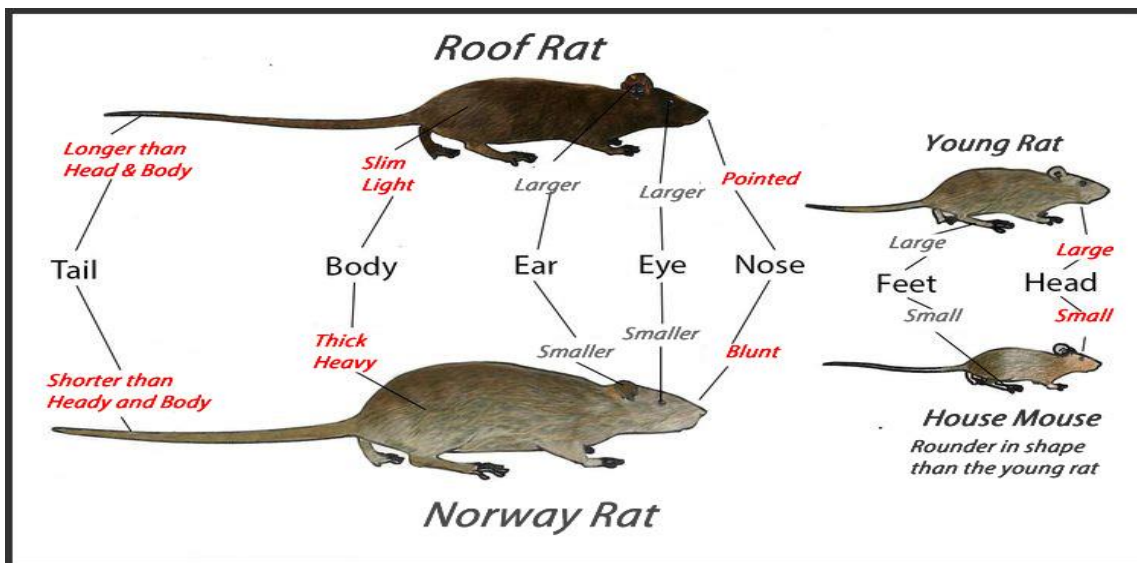





APPENDIX 1 (D): RODENT IDENTIFICATION CHART

RODENT PEST IDENTIFICATION IN THE KRUGER NATIONAL PARK

<p>Brown Rat or Norway Rat</p> <p><i>(Rattus norvegicus)</i></p>		<p>The fur is coarse and usually brown or dark grey, while the under-parts are lighter grey or brown. The brown rat is large and it's almost twice as big as a black rat.</p>
<p>Black Rat or Roof Rat / House Rat</p> <p><i>(Rattus rattus)</i></p>	 <p style="text-align: center; font-size: small;">shutterstock.com • 126884789</p>	<p>It is the common rat species and has a long-tail. It is black to light brown in colour with a lighter underside.</p>
<p>House Mouse</p> <p><i>(Mus musculus)</i></p>		<p>It is a small rodent with a characteristically pointed snout, large rounded ears, and a long, hairy tail.</p>



INDIGENOUS RODENT IDENTIFICATION IN THE KRUGER NATIONAL PARK

<p>Bushveld Gerbil (<i>Gerbilliscus leucogaster</i>)</p>		<p>The Bushveld Gerbil can be distinguished in its range from other Gerbil species by its long tail and the black dorsal line, which runs along the tail length.</p>
<p>Tree Squirrel (<i>Paraxerus cepapi</i>)</p>		<p>The total length is 350 mm, half of which is tail. Colouration on the chest varies from yellowish to buffy in the east, to white in the west. The Tree Squirrels' bellies are white.</p>
<p>Striped Mouse (<i>Rhabdomys pumilio</i>)</p>		<p>The striped mouse displays four characteristic black longitudinal stripes. They are typically small but larger than house mice. Head and body length is about 105mm, and the same length for the tail.</p>