



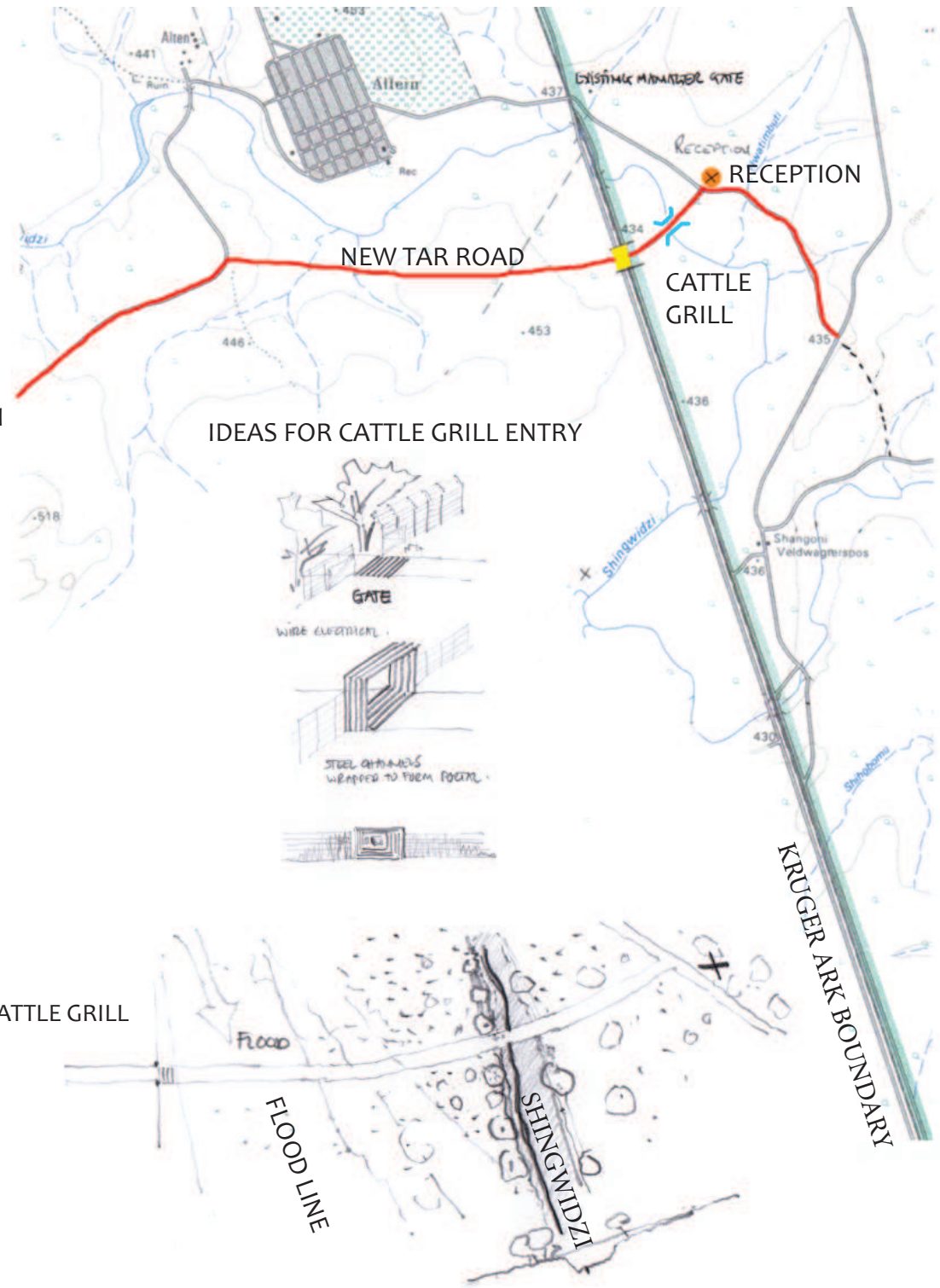


SHANGONI GATE AND RECEPTION



MAP OF ENTRANCE GATES INTO KRUGER NATIONAL PARK

ROAD TO GIYANI



IDEAS FOR CATTLE GRILL ENTRY

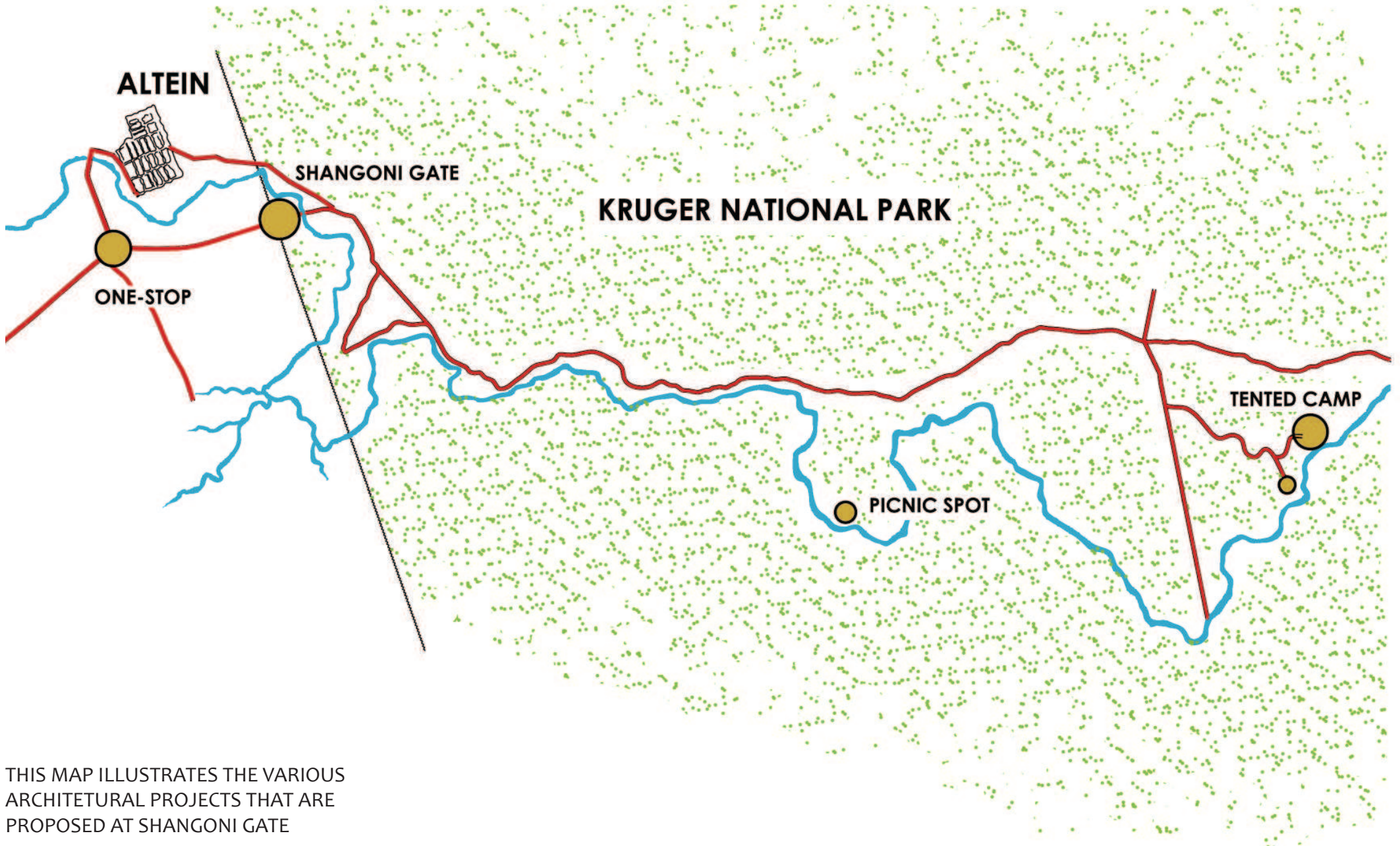
CATTLE GRILL

FLOOD LINE

SHINGWIDZI

KRUGER ARK BOUNDARY

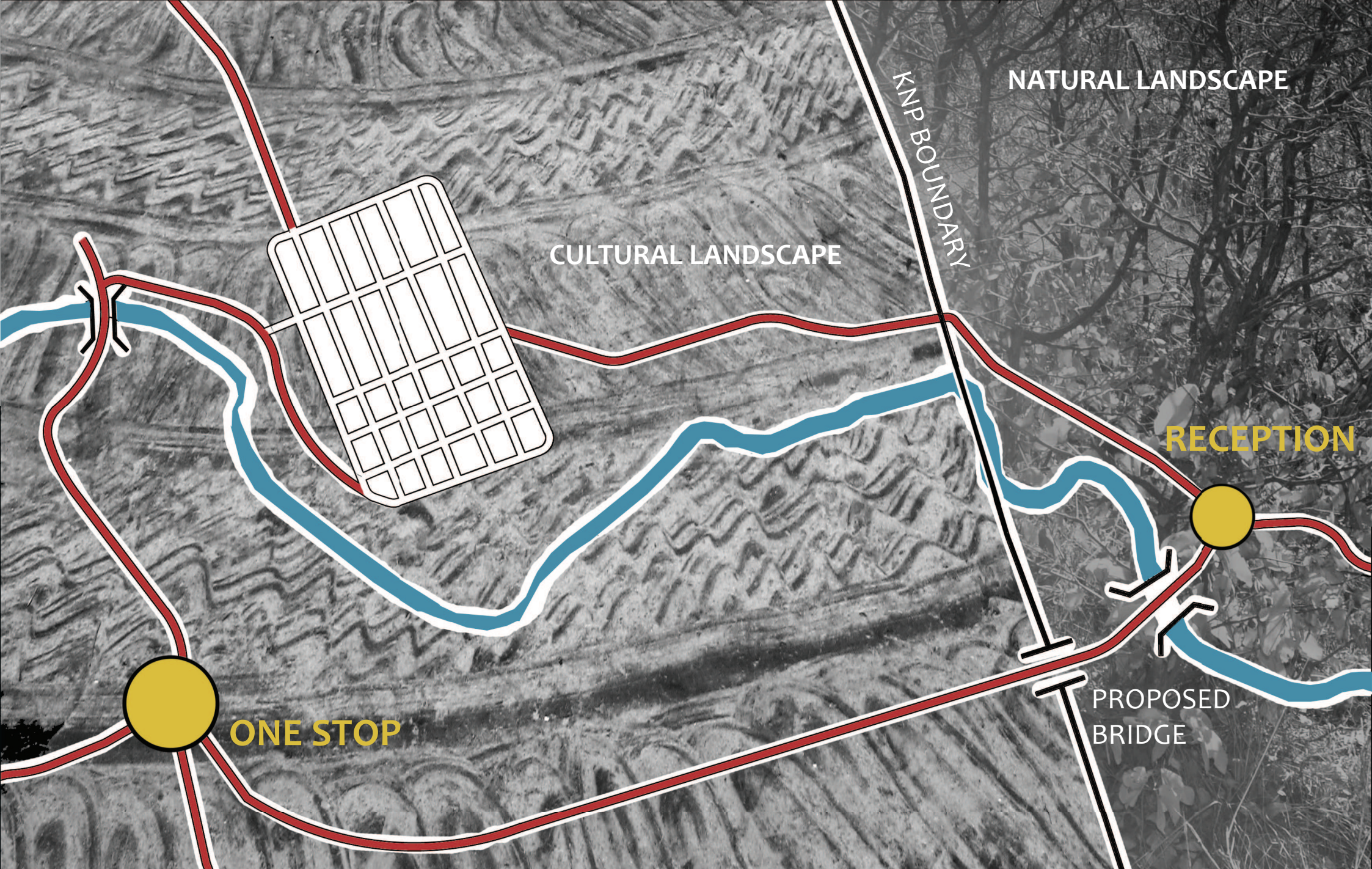
THE SHANGONI CORRIDOR



THIS MAP ILLUSTRATES THE VARIOUS ARCHITETURAL PROJECTS THAT ARE PROPOSED AT SHANGONI GATE

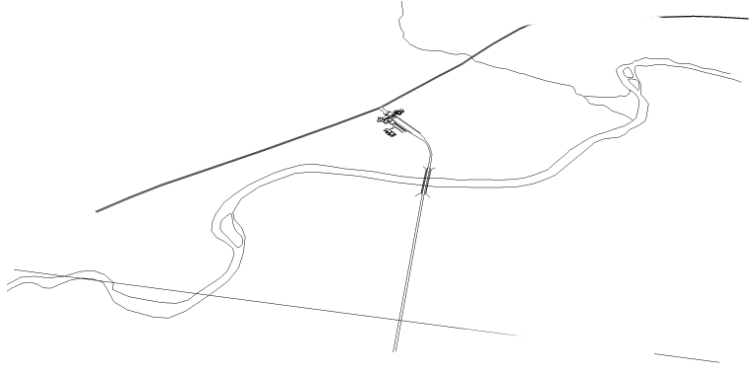


● Altein



THE TWO STRONG CONTEXTS ARE THE CULTURAL AND NATURAL LANDSCAPES.; THESE TWO ELEMENTS WERE USED TO INSPIRE THE ARCHITECTURE. THERE IS A STRONG SPACIAL AND AESTHETIC EXPRESSION OF TSONGA CULTURE; THIS IS SET IN DIALOGUE WITH A NATURAL ARCHITECTURE THAT IS INFORMED BY NATURAL FORMS THAT EVOKE THE FEELING OF A CAVE, A ROCK OR EVEN AN ANIMAL

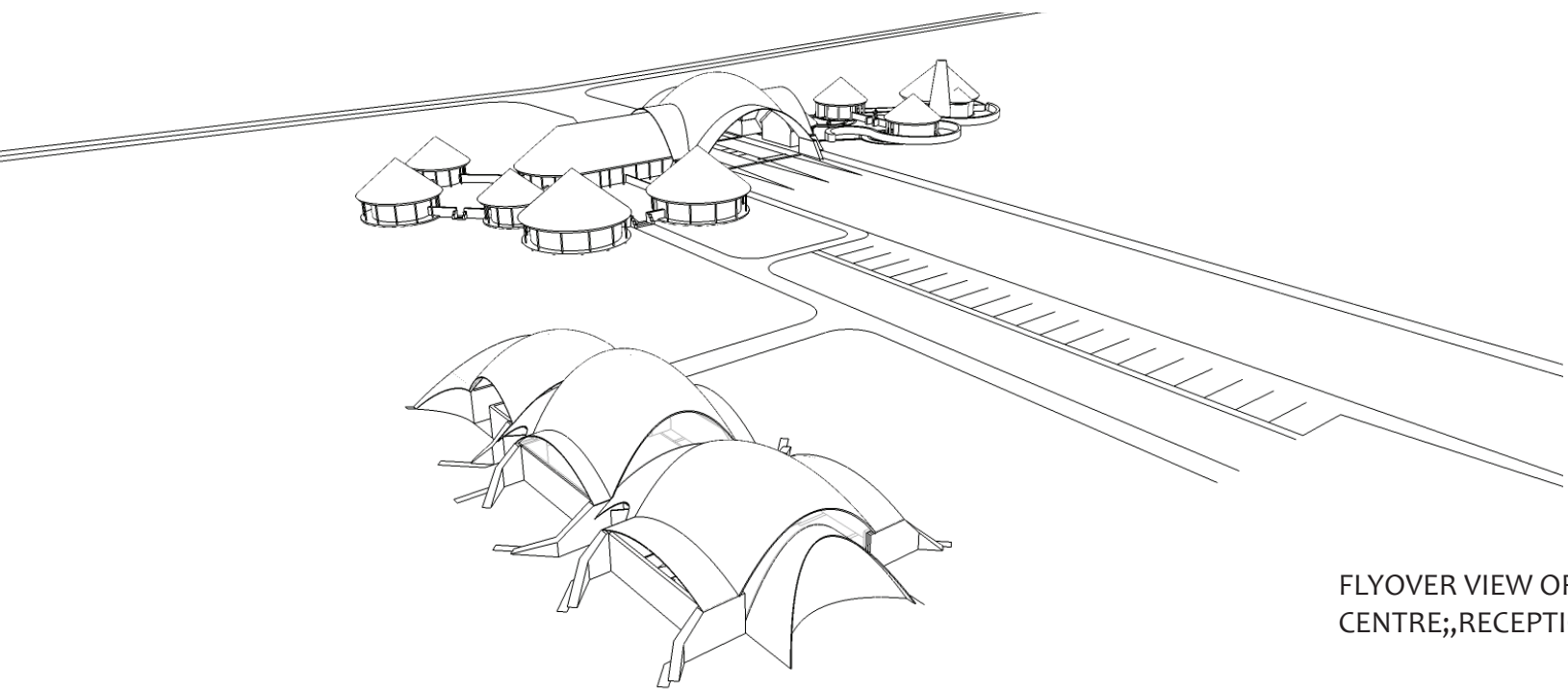
RECEPTION BUILDING AT SHANGONI GATE



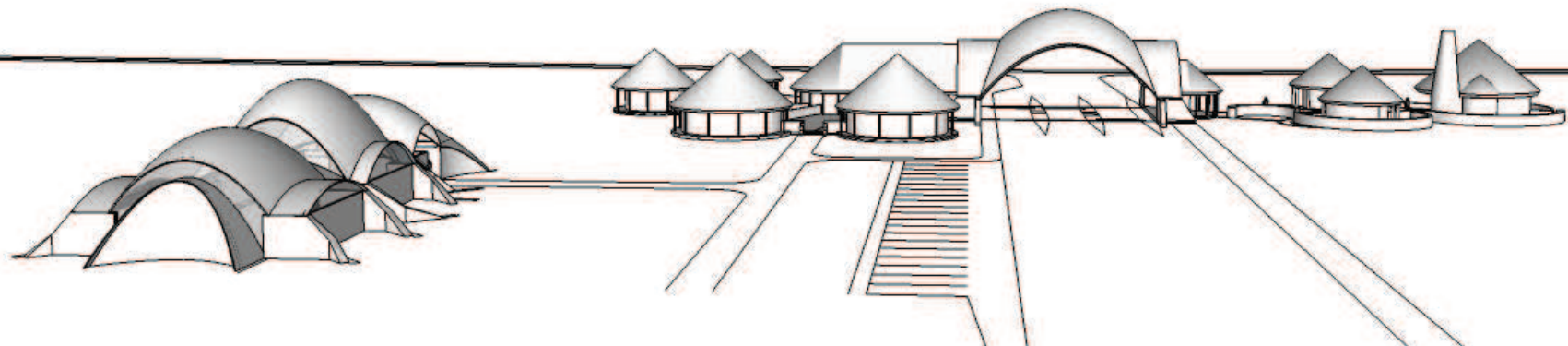
RECEPTION BUILDING IN RELATION TO THE RIVER AND THE T-JUNCTION

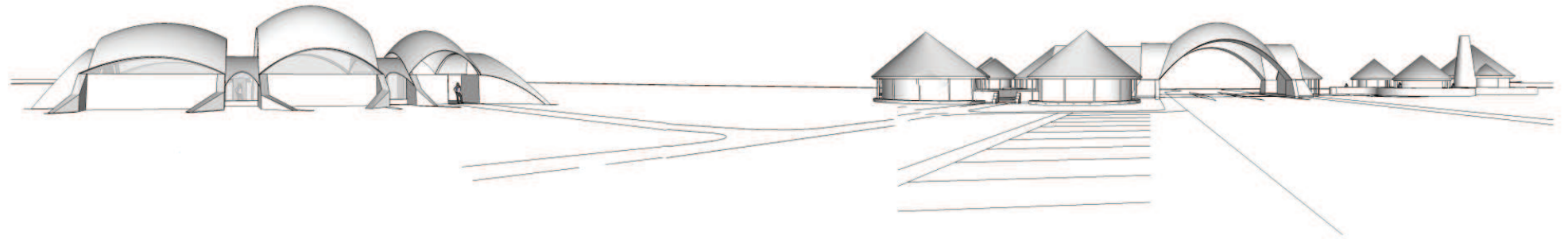


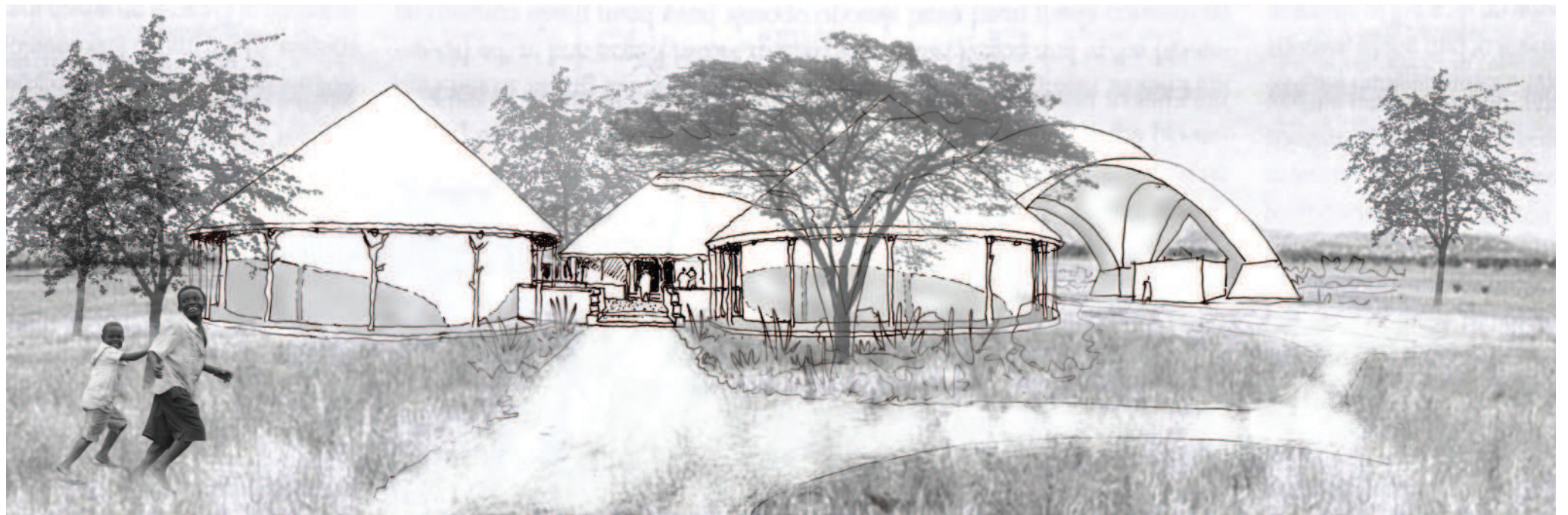
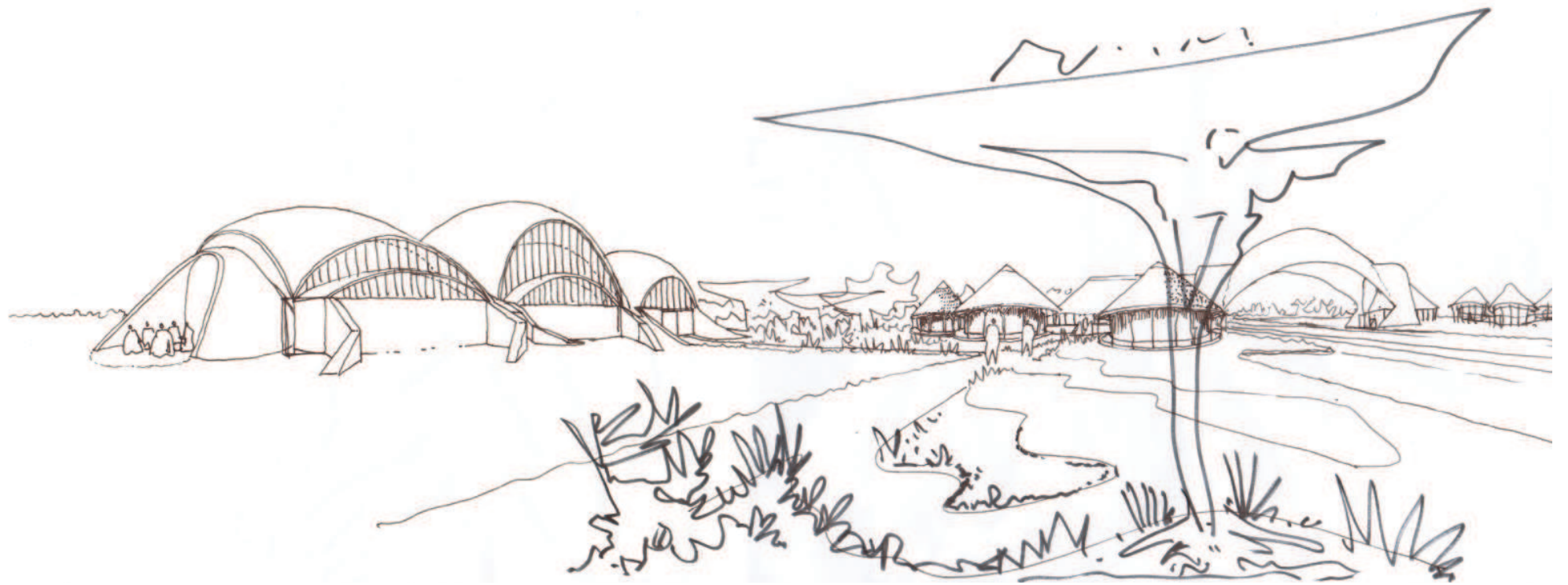
SITE PLAN (not to scale)

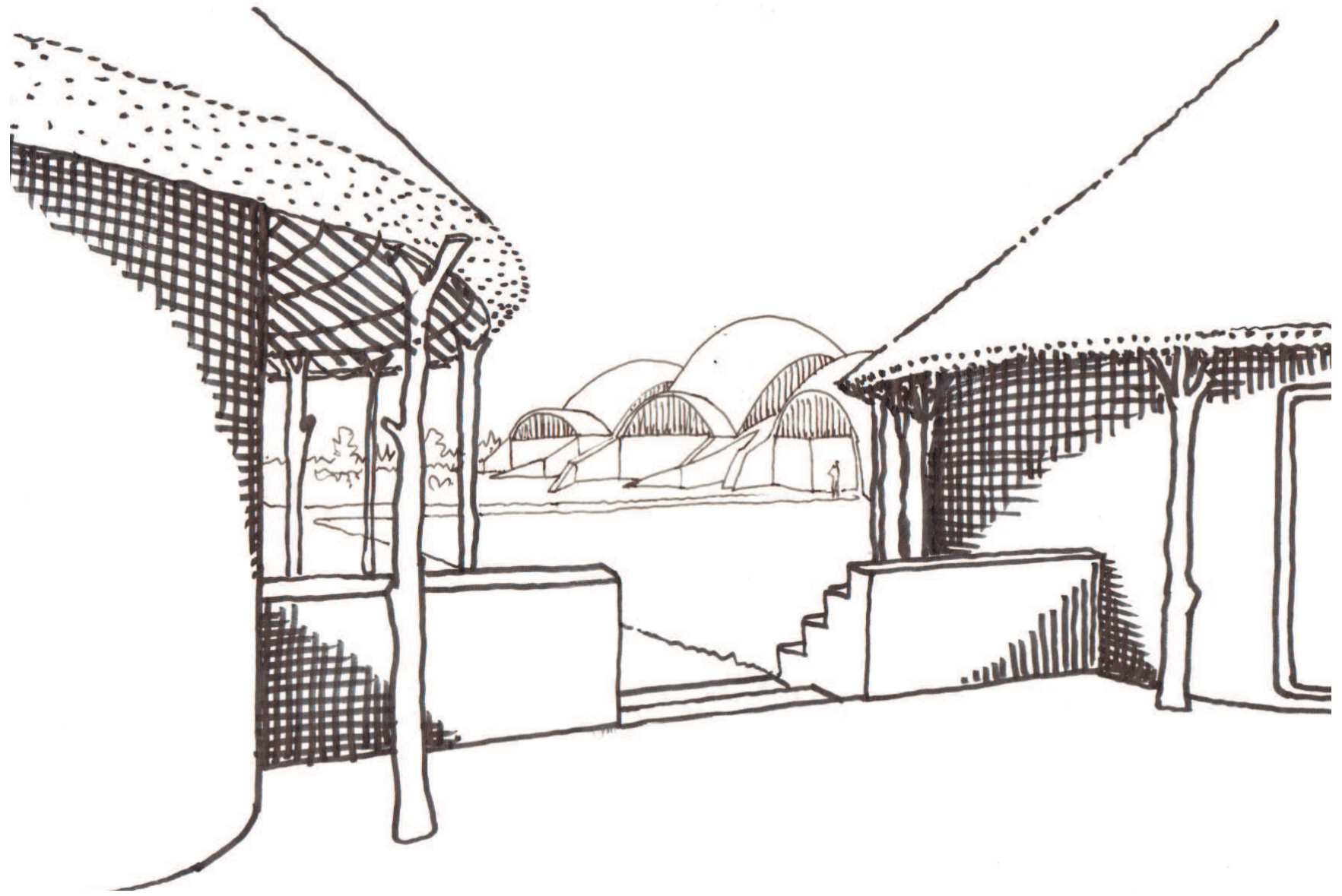


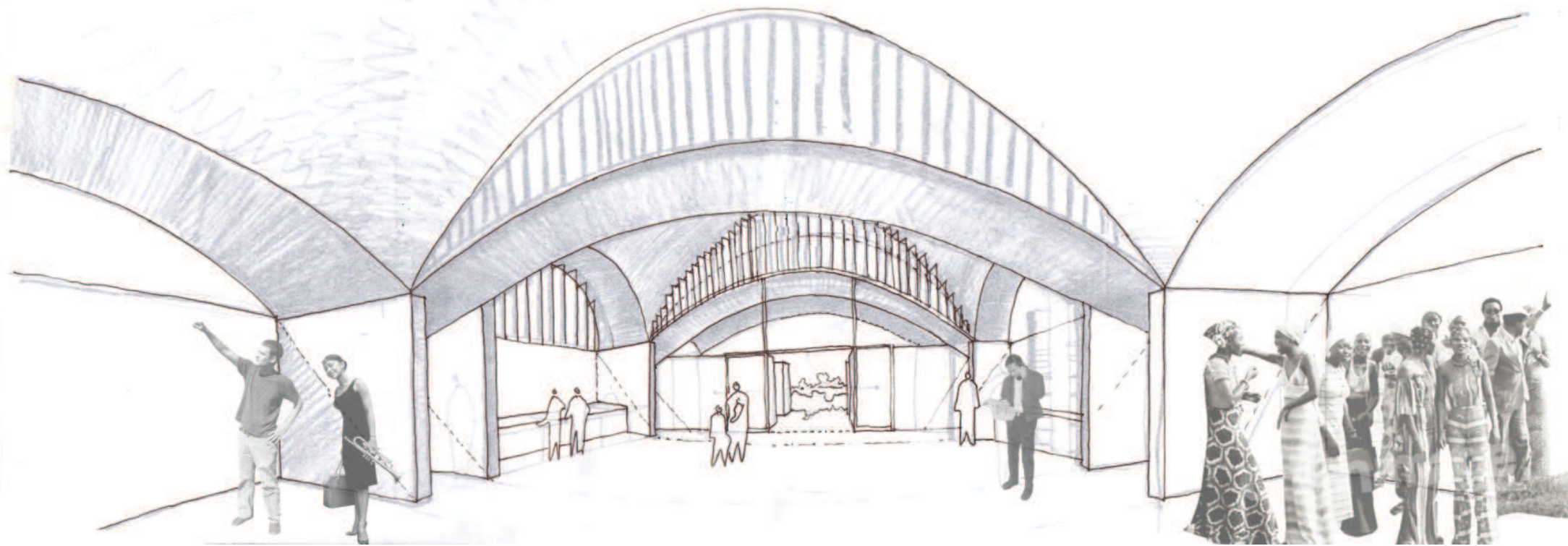
FLYOVER VIEW OF THE ENVIROMENTAL CENTRE; RECEPTION, CURIO SHOP AND OFFICES

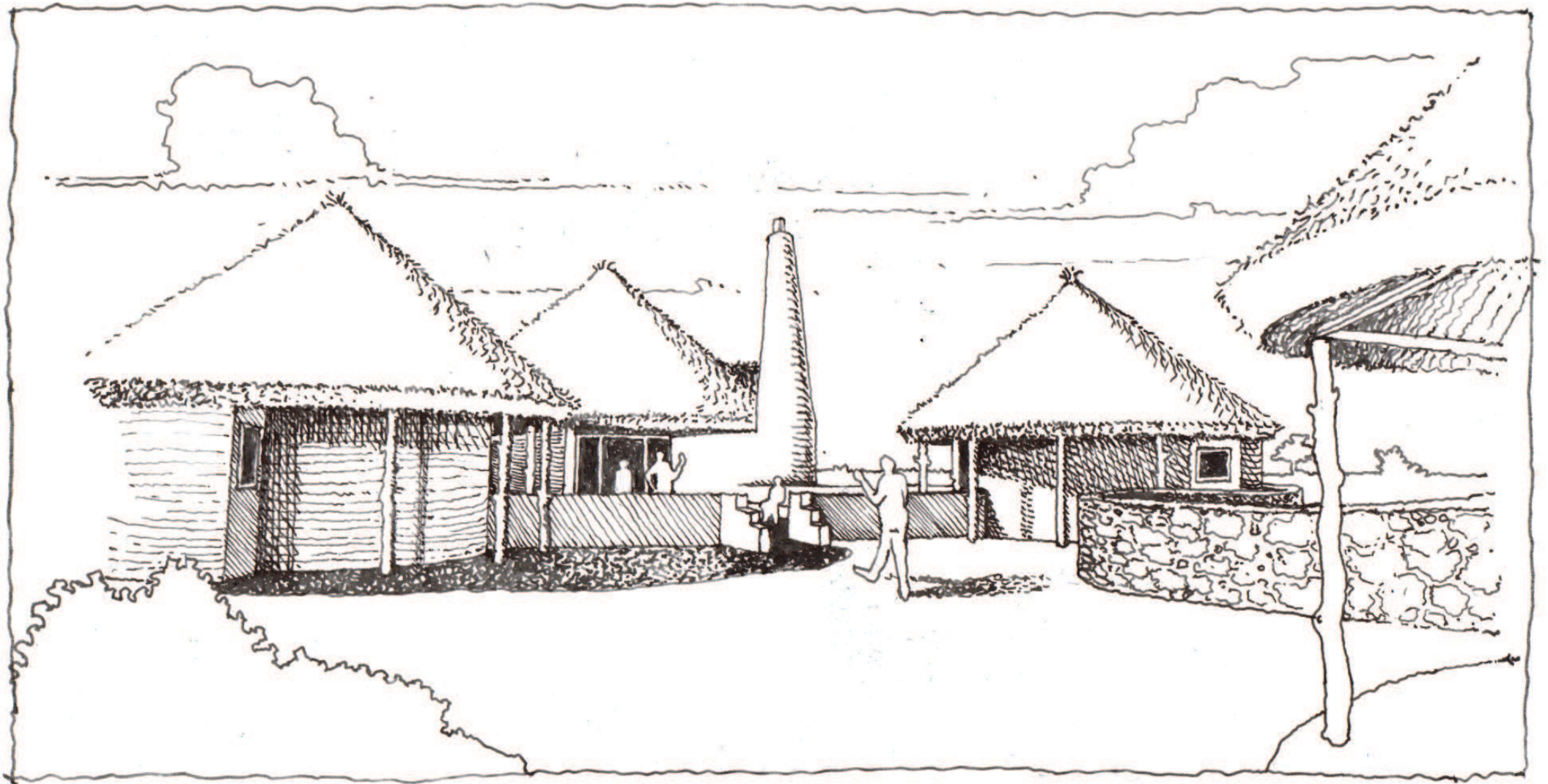


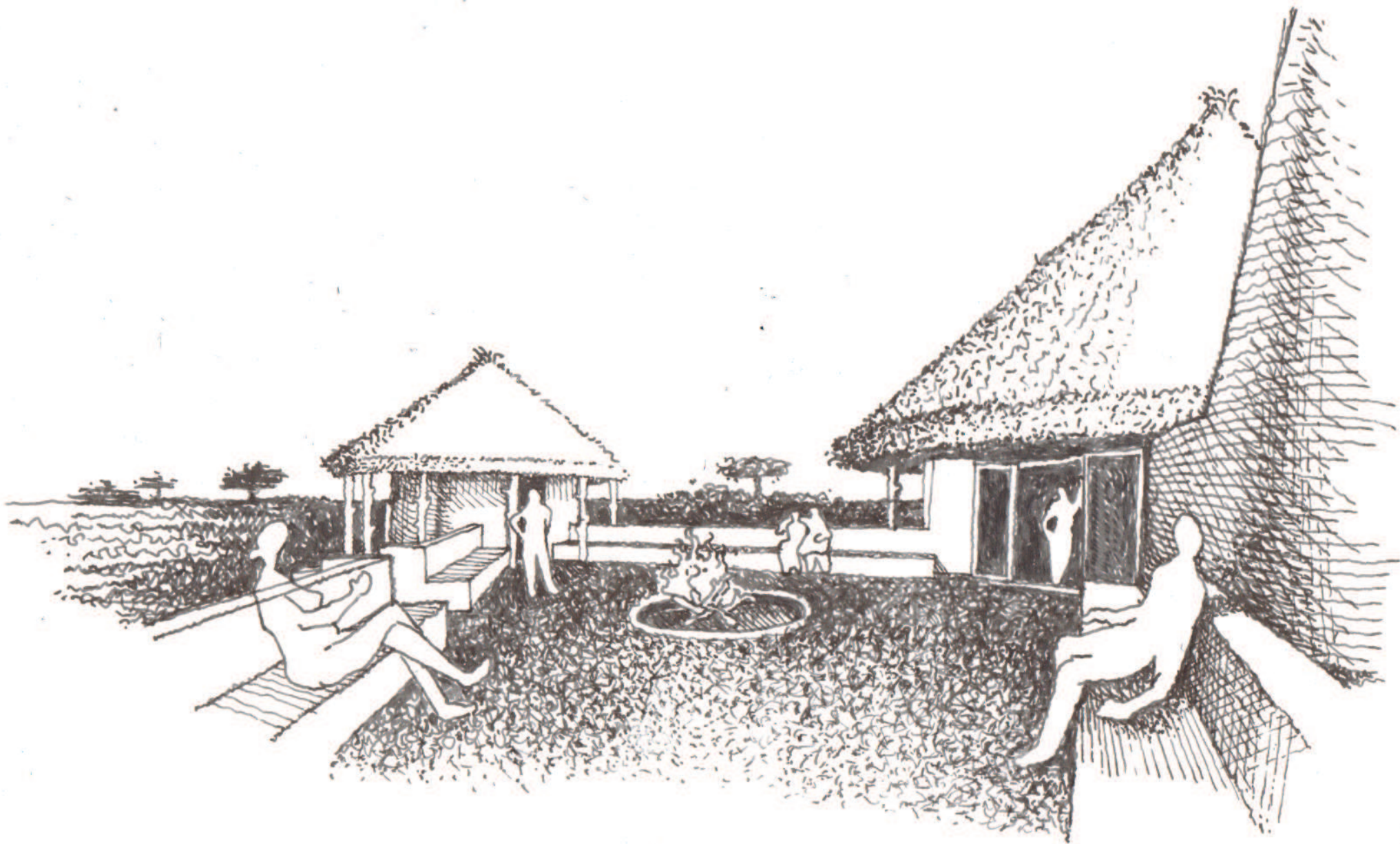


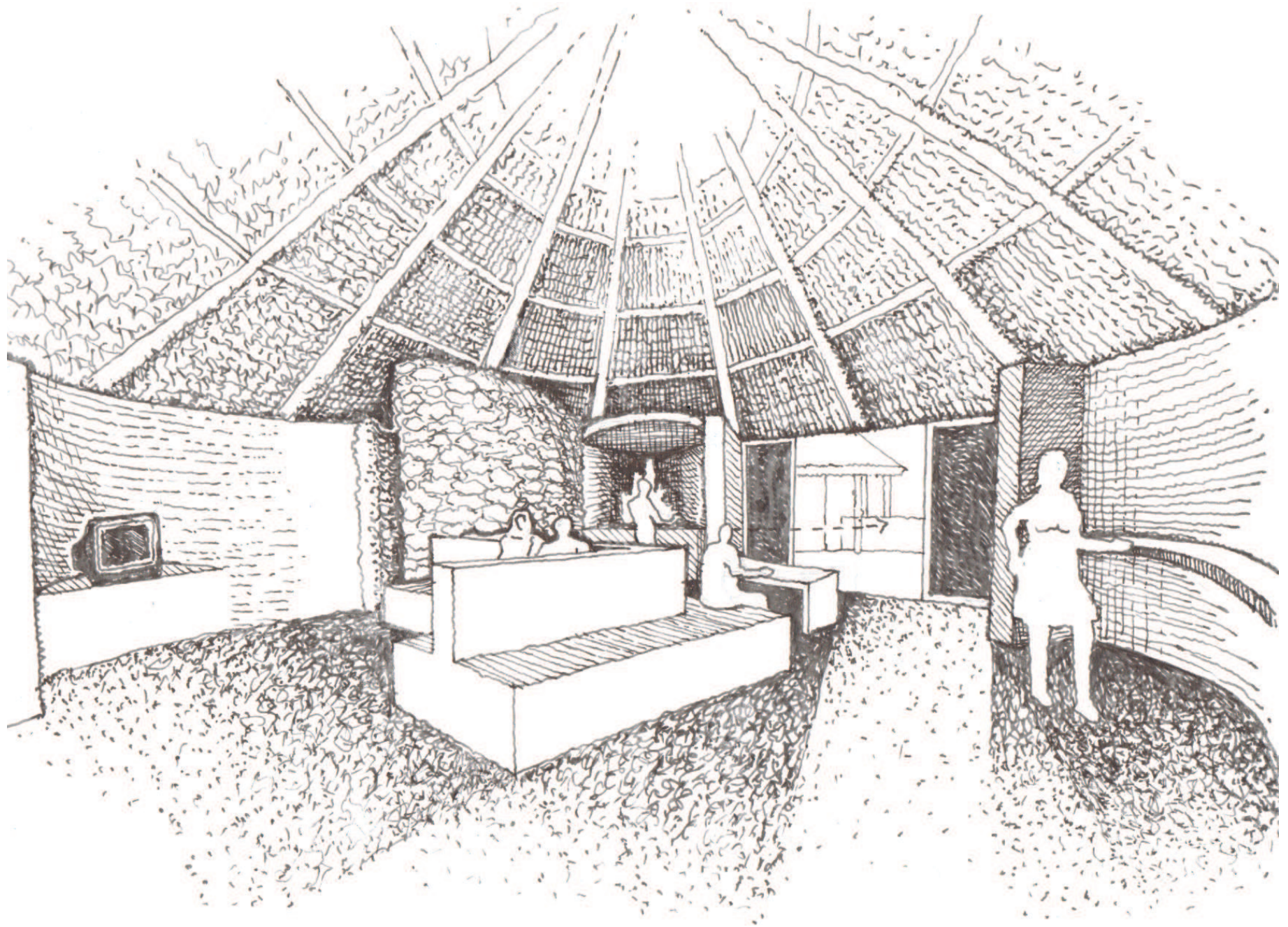




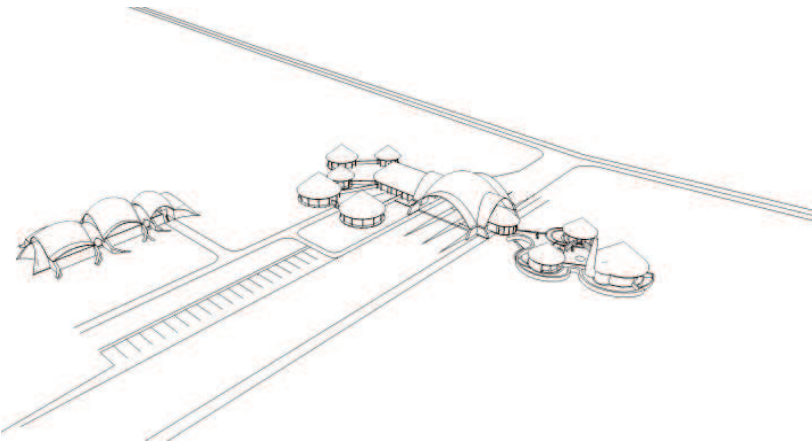




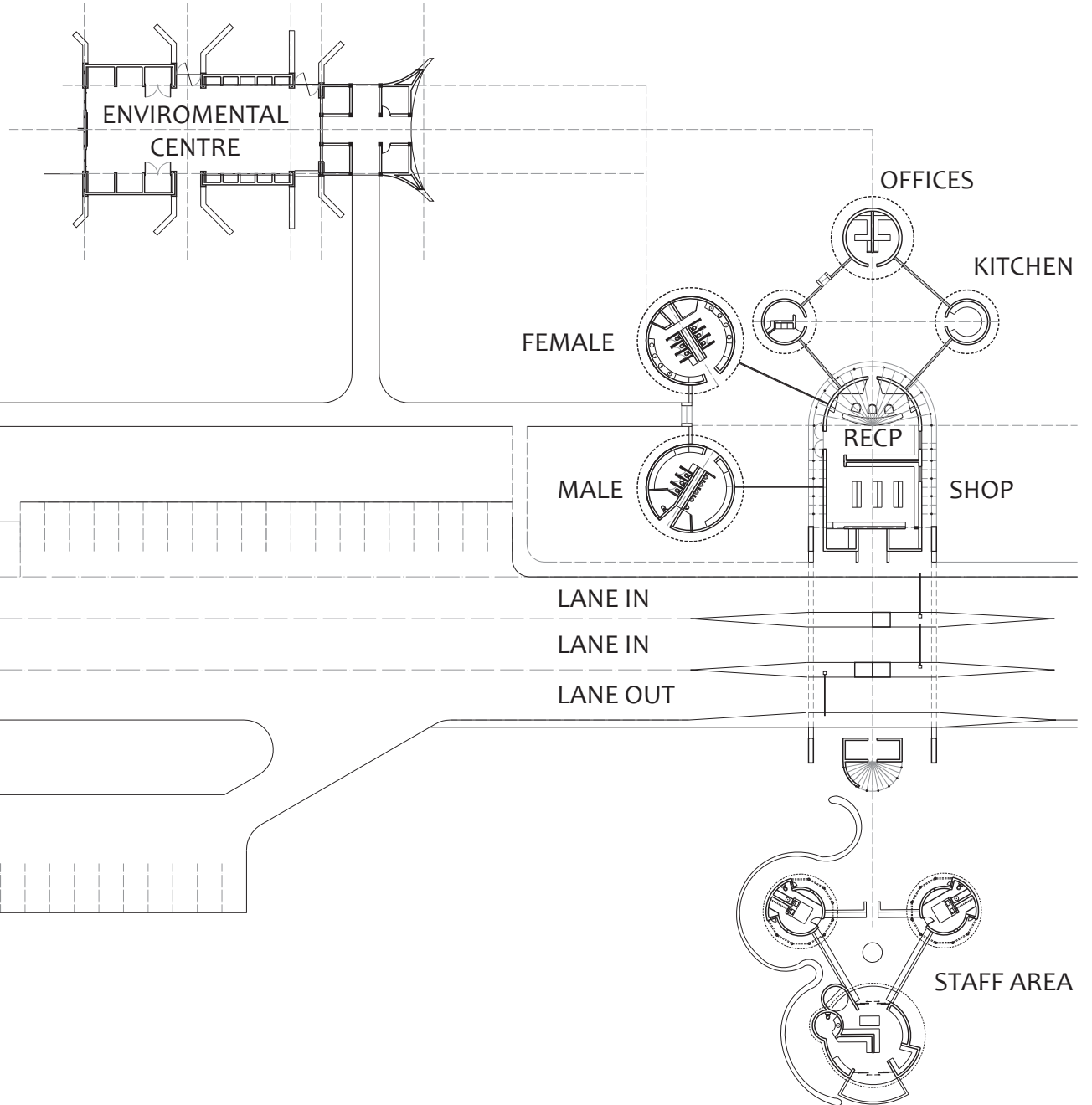




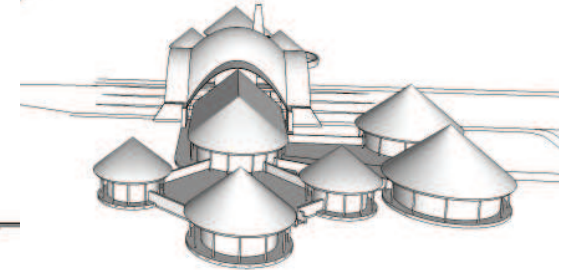
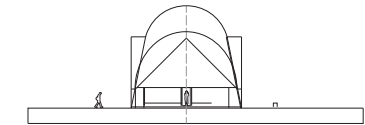
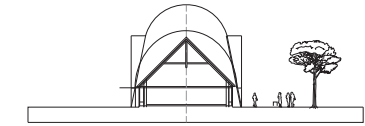
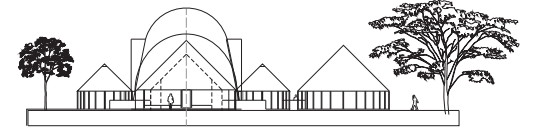
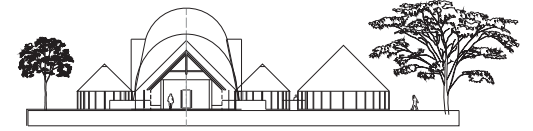
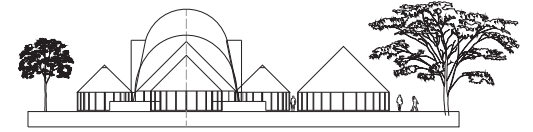
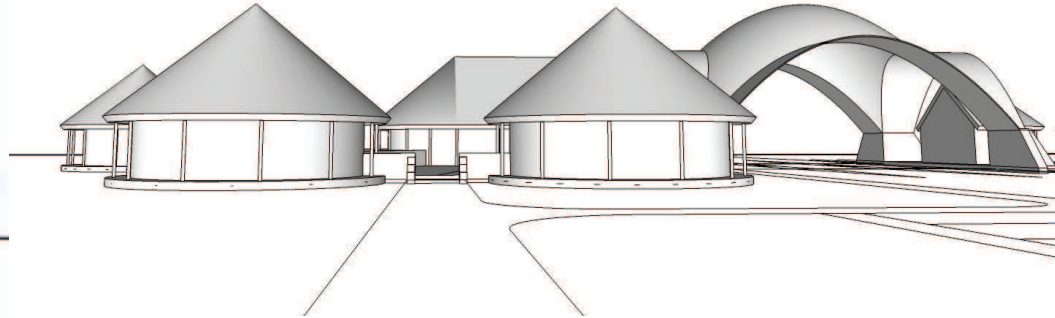
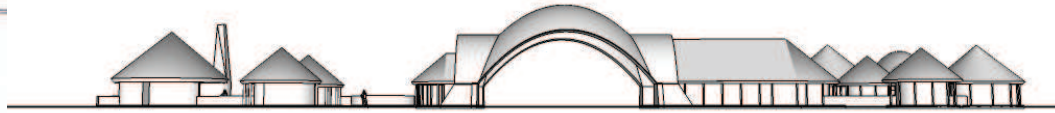
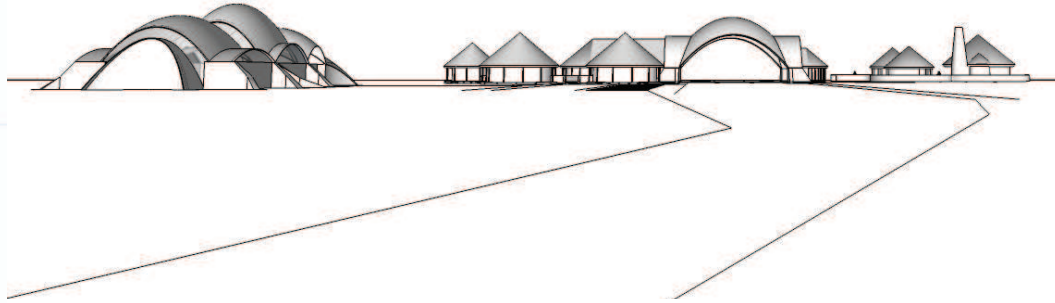
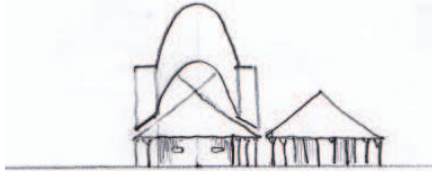
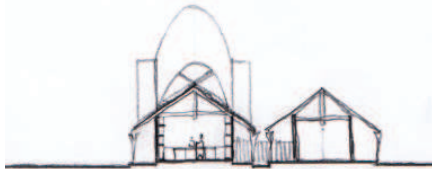
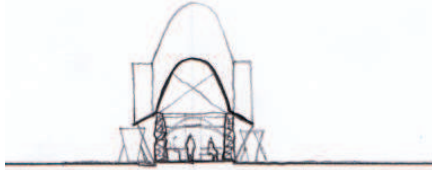
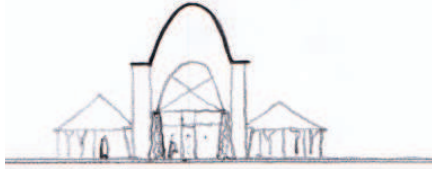
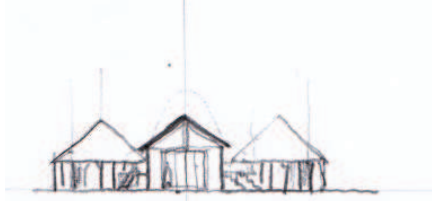
PLANS OF THE RECEPTION AT SHANGONI GATE



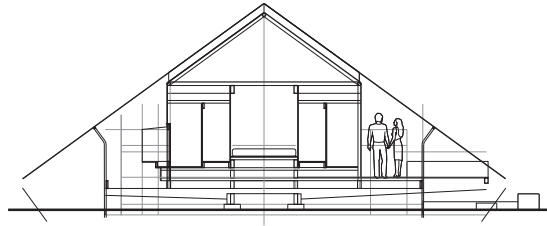
FLYOVER VIEW



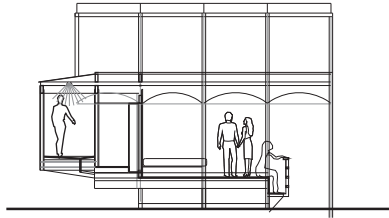
SECTIONS



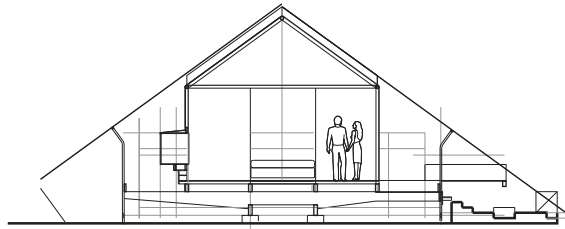
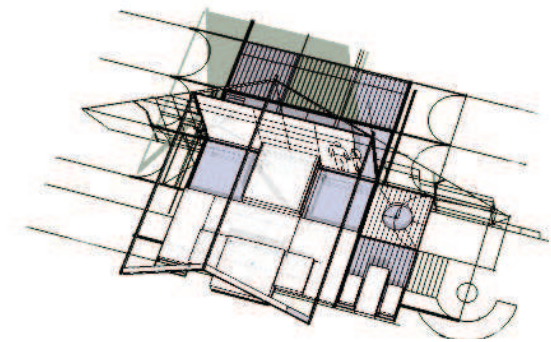
TENTED CAMP UNITS



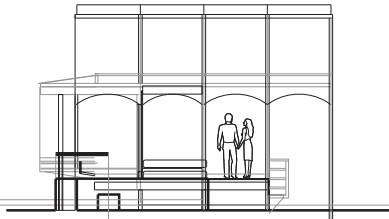
SECTION A



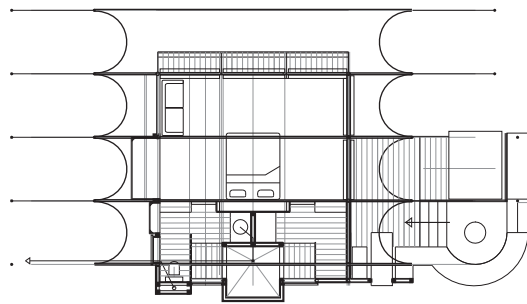
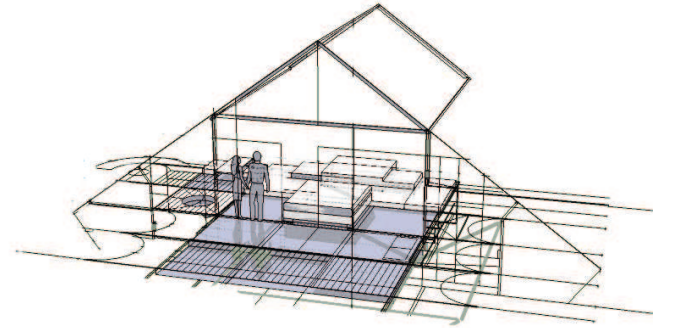
CROSS-SECTION 1.



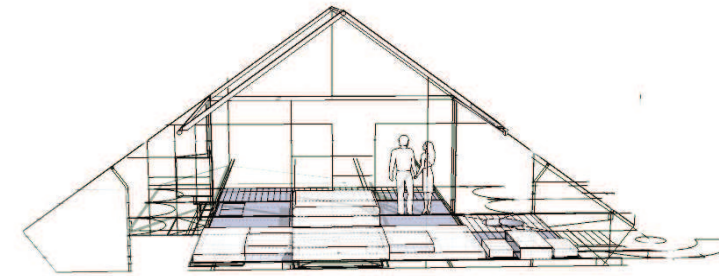
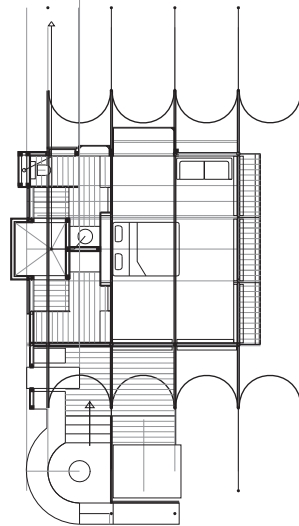
SECTION B



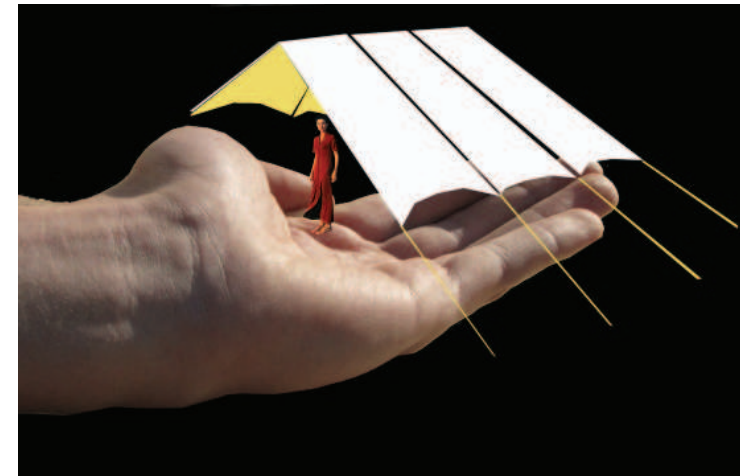
CROSS-SECTION 2.



PLAN

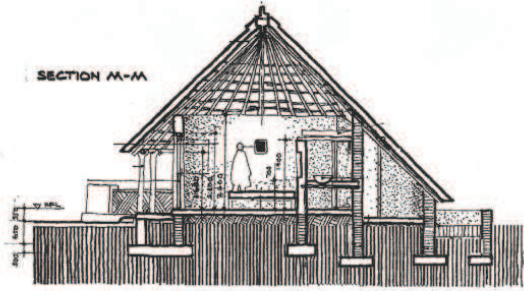


THE TENT HAS A DECK THAT IS LIKE A CUPPED HAND. THE DECK FOLDS UP TO BECOME THE CUPBOARDS OR THE PRIVACY FOR THE BATHROOMS AND CHANGE AREA. LIKE THE HAUL OF A BOAT THE DECK WRAPS AROUND THE BED TO DEFINE THE SIDES OF THE TENT. THE TENSILE FABRIC VERY SIMPLY SPANS OVER THE DECK TO COMPLETE THE EXPERIENCE. THE VISITOR'S CAN GET A VIEW FROM THE BED, THE SHOWER AND THE CAMP FIRE. THE BEDROOM WALLS CAN ROLL BACK ON TWO SIDES REVEALING THE VIEW OF THE RIVER. THE FIRE GIVES THE VISITOR AN INTIMATE EXPERIENCE OF THE VELD AT DUSK AND INTO THE EVENING. THE BED ON THE DECK GIVES LOVERS THE OPTION OF LYING UNDER THE STARS.



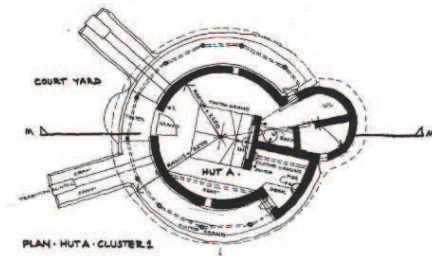
CHALET TYPES

THE CHALET TYPES PROVIDE VARIOUS OPTIONS FOR ACCOMMODATION, FROM A MODEST CLIENTELE TO THE LUXURIOUS

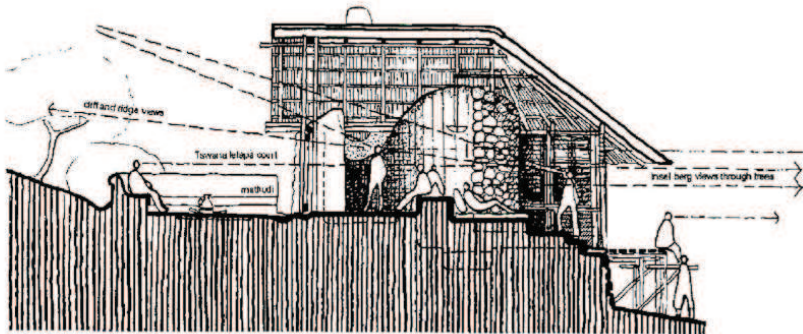


Plan and section . Rondavel unit
SILONQUE INSTITUTE
 Peter Rich Architect 083 725 0665

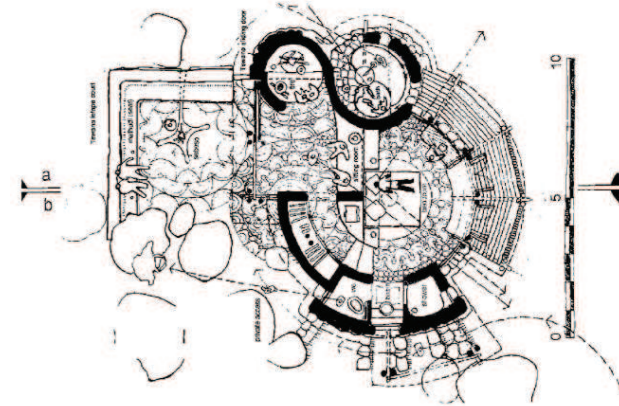
SILONQUE LODGE



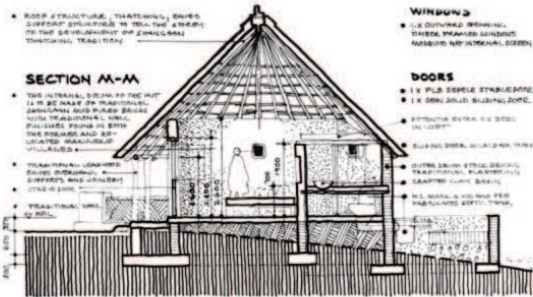
SILONQUE LODGE



BWANARI LODGE

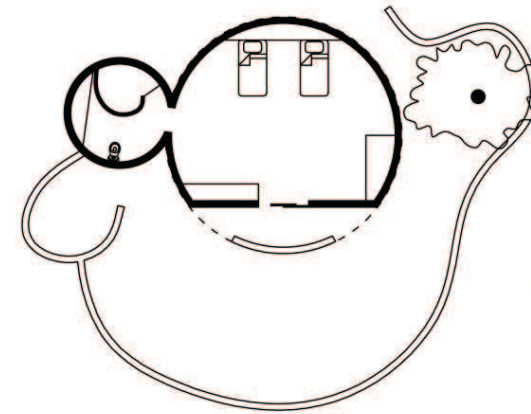


BWANARI LODGE

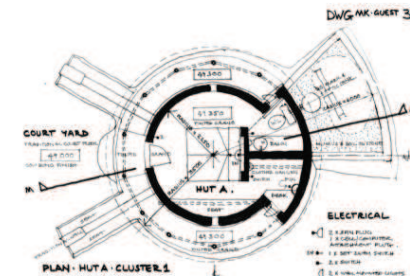


MAKULEKE GUEST HUT A - CLUSTER 1, MAKULEKE VILLAGE NWP,
 REFER TO LOCATION DWG/MK/GUEST/1 & 2
 PETER RICH ARCHITECTS 011 726 6151 OR 083-725-0665

MAKULEKE LODGE

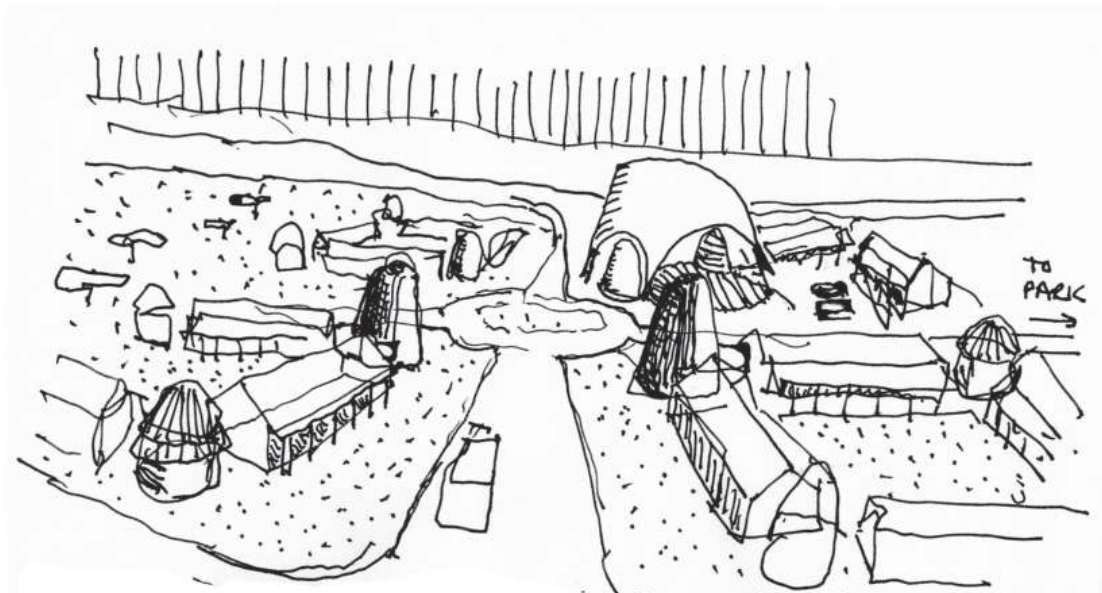
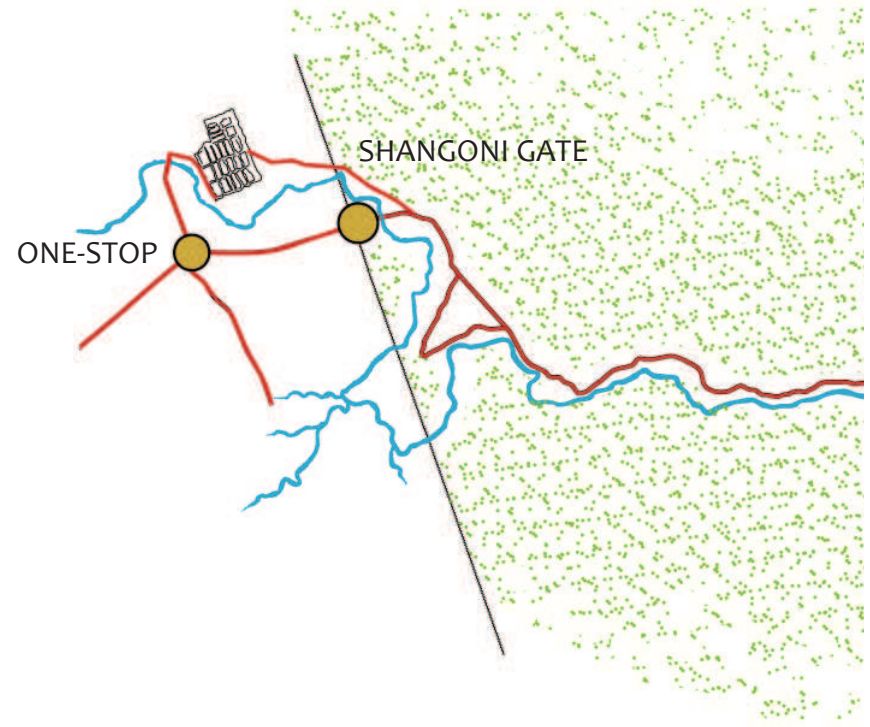
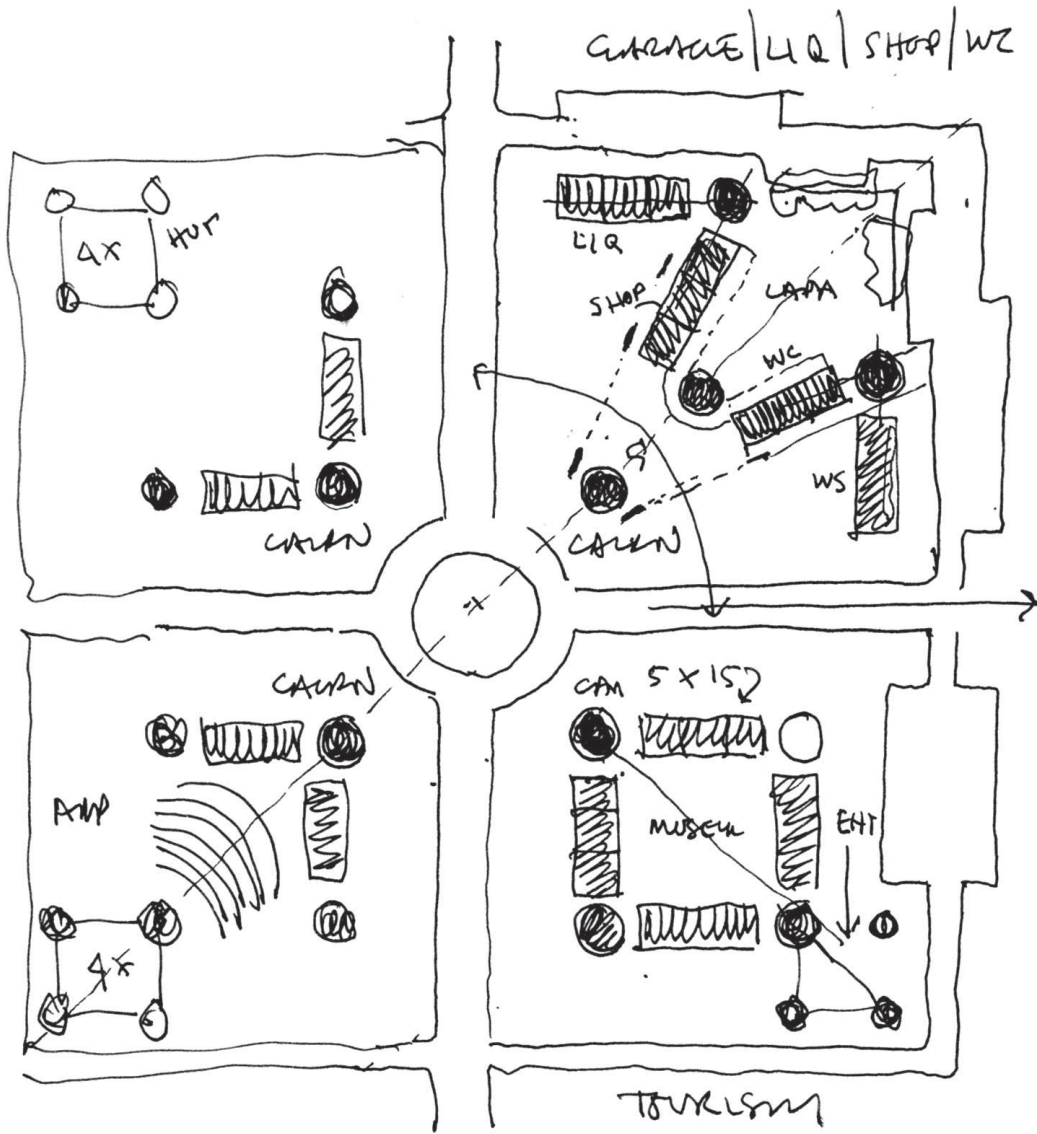


MOPANE LODGE



MAKULEKE LODGE

THE SHANGONI HUB



THIS PROJECT SHOULD GROW INCREMENTALLY.

PHASE 1.

PETROL STATION, MECHANIC, SHOP, TOILETS (TOP RIGHT QUADRANT).

PHASE 2.

RESTAURANTS, ACCOMMODATION, HERITAGE MUSEUM, LOCAL MARKET