

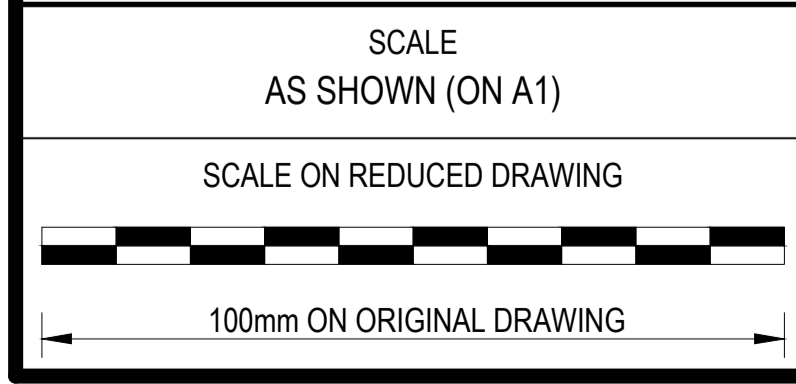


**LEGEND**

110mmØ uPVC FOUL SEWER LINE	
ELECTRICITY LINE	
90mmØ uPVC WATER LINE	
FIRE HYDRANT LINE	
75mmØ CLASS 12 HDPE PUMP LINE	
STORM WATER LINE	
OPTIC FIBER LINE	

**TOTAL AREAS**

FACILITY	AREA (sq m)
FUNICULAR	7,346
CURIO SHOPS	405
RESTAURANT	1,590
WWTN / ABLUTION	683
UTILITY BUILDING	190
CONCRETE ROAD	2,260
MAIN PARKING	4,152
<b>TOTAL</b>	<b>14,692</b>



NO	DATE	AMENDMENTS	D.D.L APPROVED
0	08/2019	ORIGINAL VERSION	

DESIGN BY	D. DE LANGE
DESIGN CHECKED	D. DE LANGE
DRAWN BY	V. GROBLER
DRAWING CHECKED	D. DE LANGE

**ROADS & HIGHWAYS**  
**A BUSINESS UNIT OF DIGITAL INDUSTRIES (PTY) LTD**  
 UNIT B, 55 SKAAMROSIE STREET  
 PROTEA VALLEY, 7530  
 TEL: +27 21 913 0310

CAPE POINT LAYOUT  
 ENTIRE PRECINCT



NOTED BY		TYPE OF DRAWING	DETAIL
p. SANPARKS	DATE	CONTRACT NUMBER	
APPROVED BY		DRAWING NUMBER	2661/R&H/03Lp
p. ROADS AND HIGHWAYS	2021/05/03 DATE	REVISION NUMBER	0 . . . . .