



South African
NATIONAL PARKS



SHANGONI GATE DEVELOPMENT INSIDE THE KRUGER NATIONAL PARK

Shangoni gate development forum meeting
29 June 2016

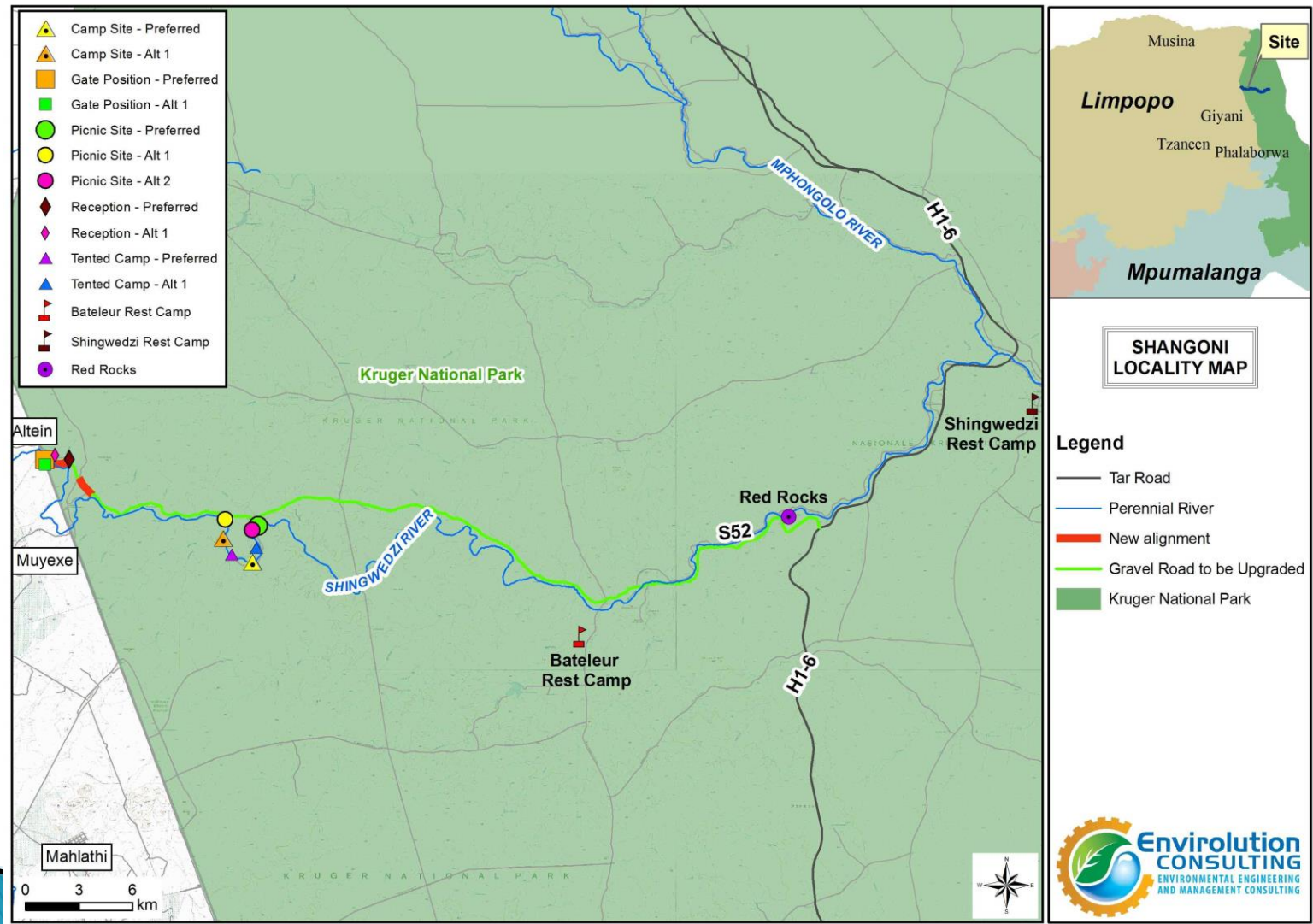
Introduction

- Welcome and Introduction
- Project Description
- Public Participation Process to date
- Environmental Authorisation process
- Specialist Studies undertaken and findings
- Way forward

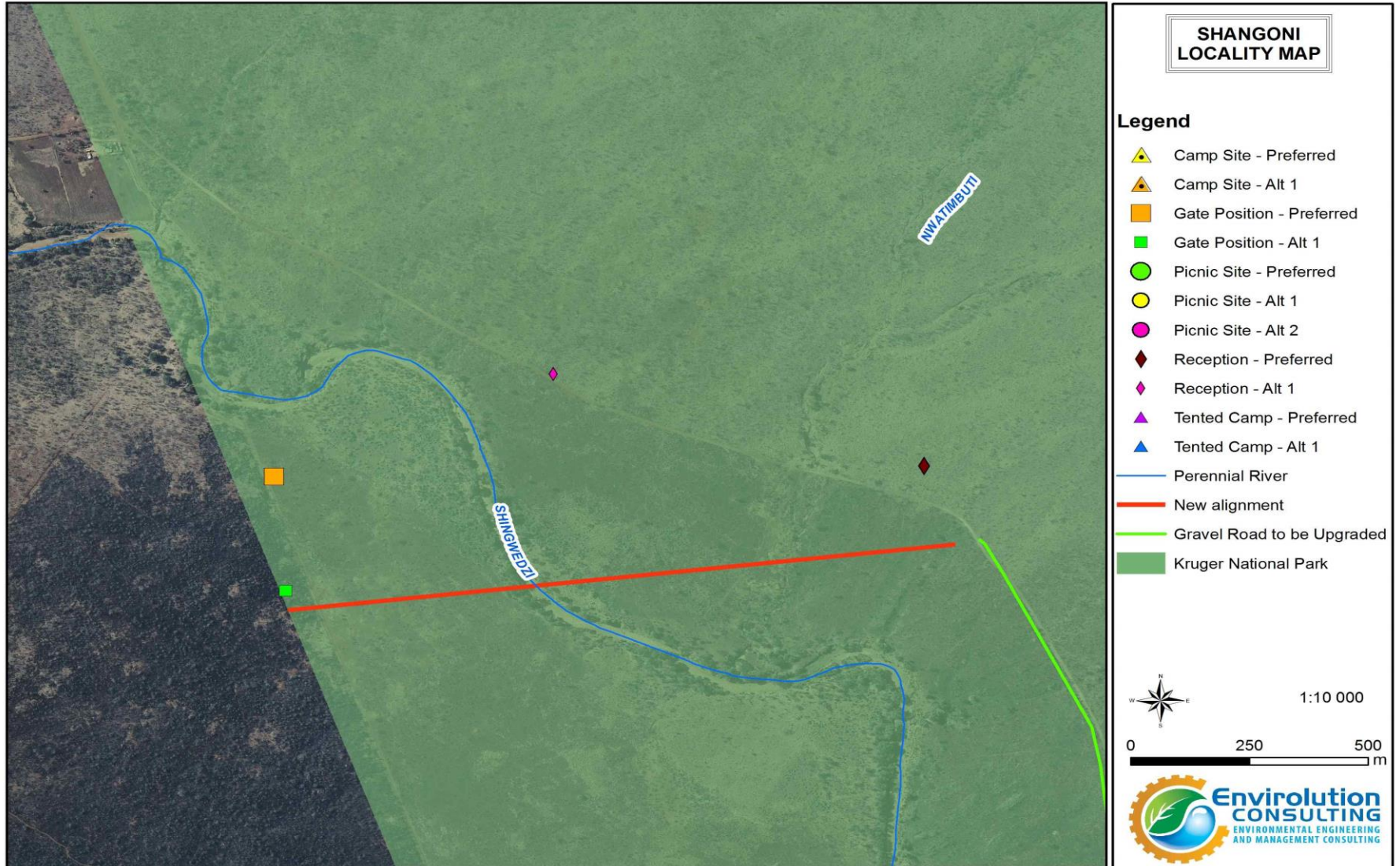
PROJECT DESCRIPTION

- SANParks proposes to construct:
 - ▶ New entrance gate,
 - ▶ A high-water bridge over the Shingwedzi River
 - ▶ A new reception centre with education facilities
 - ▶ A picnic site, a camp site, a tented camp.
 - ▶ 50 kilometer black-topped road routed parallel to the Shingwedzi River which connects with the H1-6 Road linking Shingwedzi and Mopane Rest camps. (New access road will be phased from gravel road to tar road as and when sufficient funding is secured)

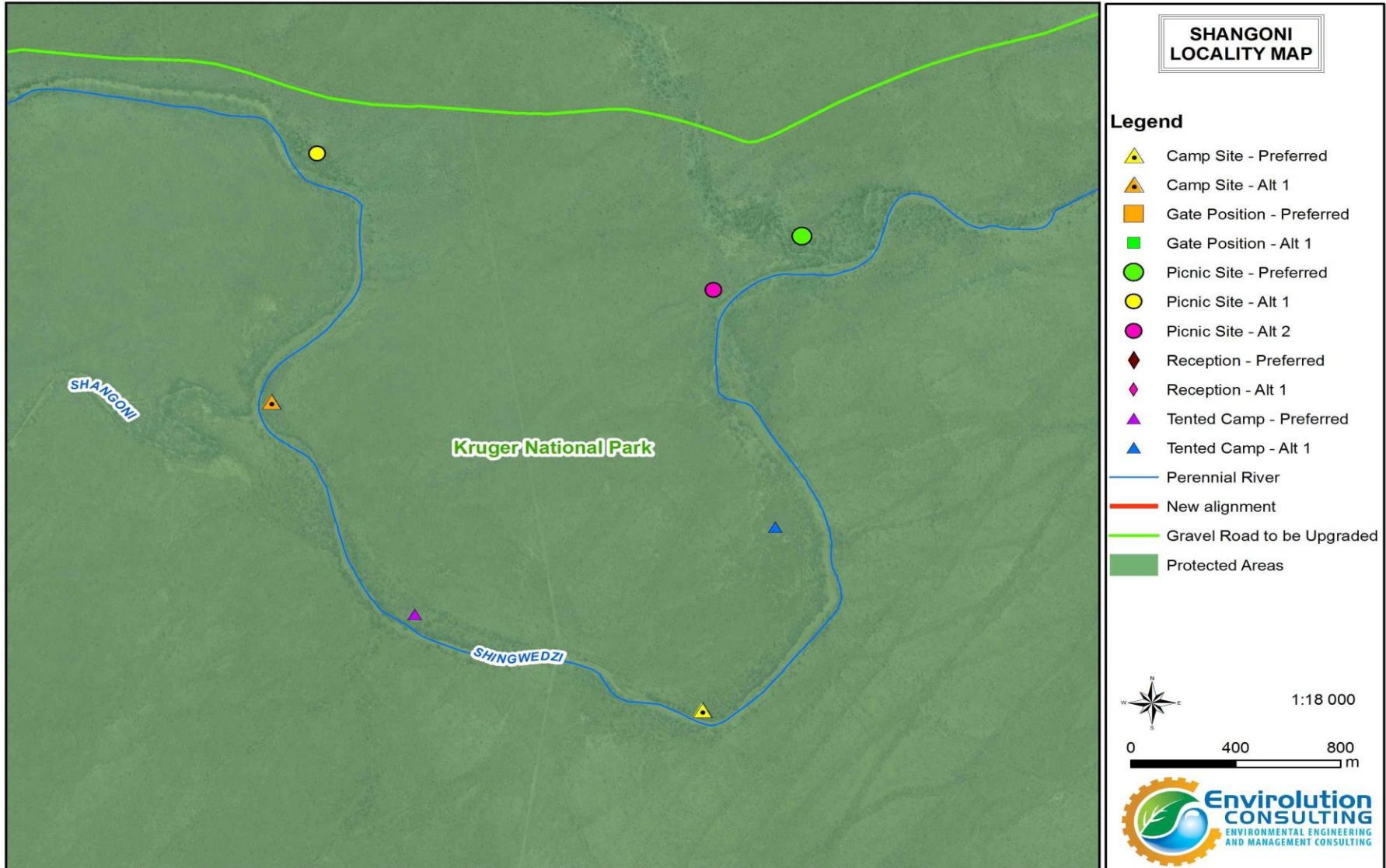
PROJECT MAP



Gate position, Bridge and Reception facilities



Tented camp, picnic site and camp site

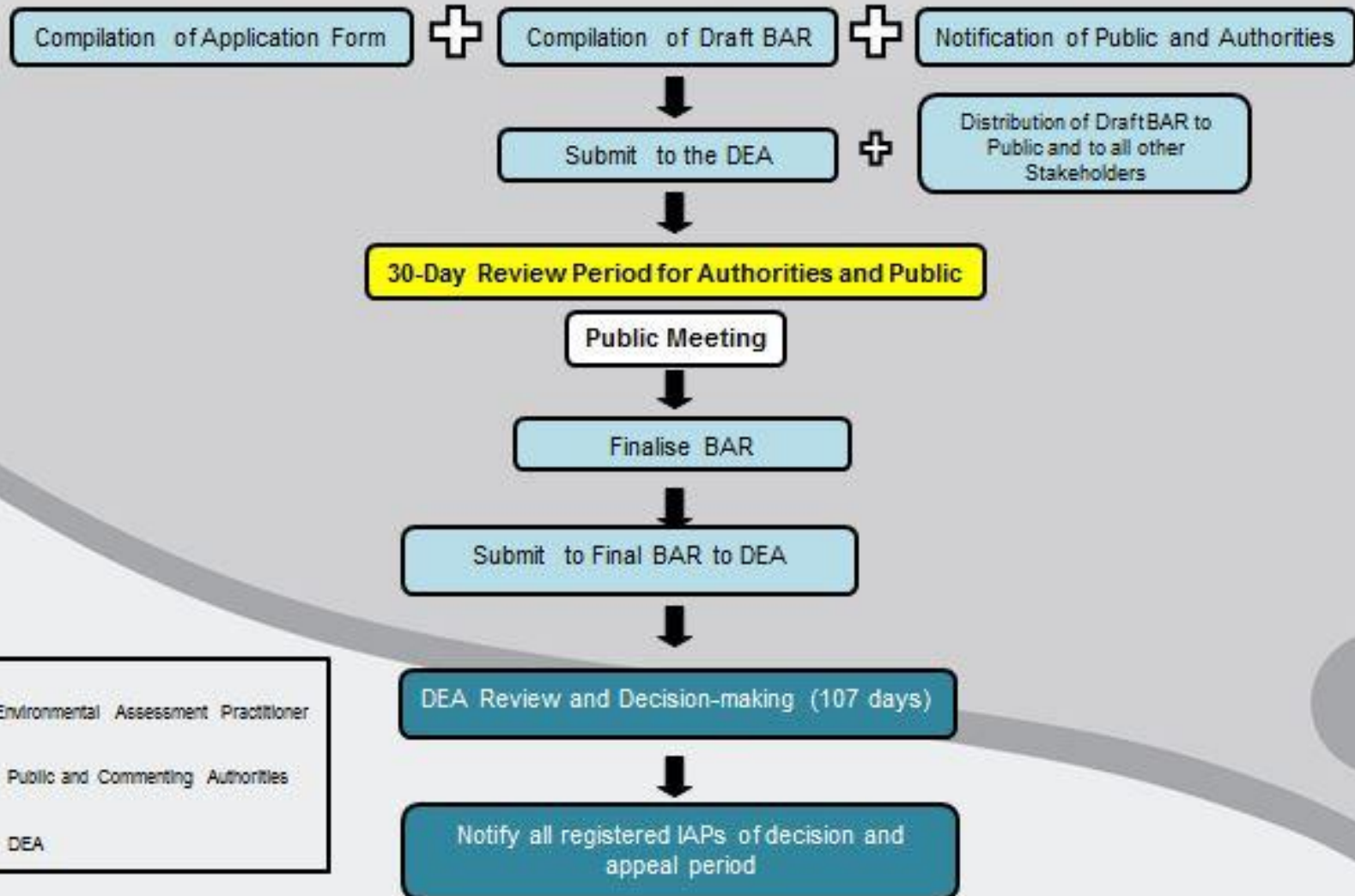


PUBLIC PARTICIPATION PROCESS TO DATE

The summary of the PPP is summarised as follows:

- Presented the project to the Shangoni gate development forum at Muyexe Village on 03 September 2015
- Newspaper adverts placed on 24 April 2016 (official notification start date was 29 April 2016).
- On-site notices were placed (16-17 April 2016)
- The public comments period has elapsed officially on **01 June 2016 (30 days)**
- Basic Assessment reports is currently under compilation

Environmental Authorisation Process



SPECIALIST STUDIES UNDERTAKEN

- Specialist investigations that have been undertaken include:
 - Wetland Assessment
 - Vegetation Assessment
 - Fauna, Avifauna and Habitat Assessment
 - Visual Impact Assessment
 - Heritage Impact Assessment
 - Socio-economic Assessment

WAY FORWARD

- Inclusion of public comments into the Basic Assessment Report
- The Draft Basic Assessment Report planned to be released end of July 2016 to DEA and public for review and comments.
- Apply DEA's comments & recommendations
- Submit Final BAR and await DEA's decision
- Decline/Approval with conditions



THANK YOU!!



South African
NATIONAL PARKS



Envirolution
CONSULTING
ENVIRONMENTAL ENGINEERING
AND MANAGEMENT CONSULTING