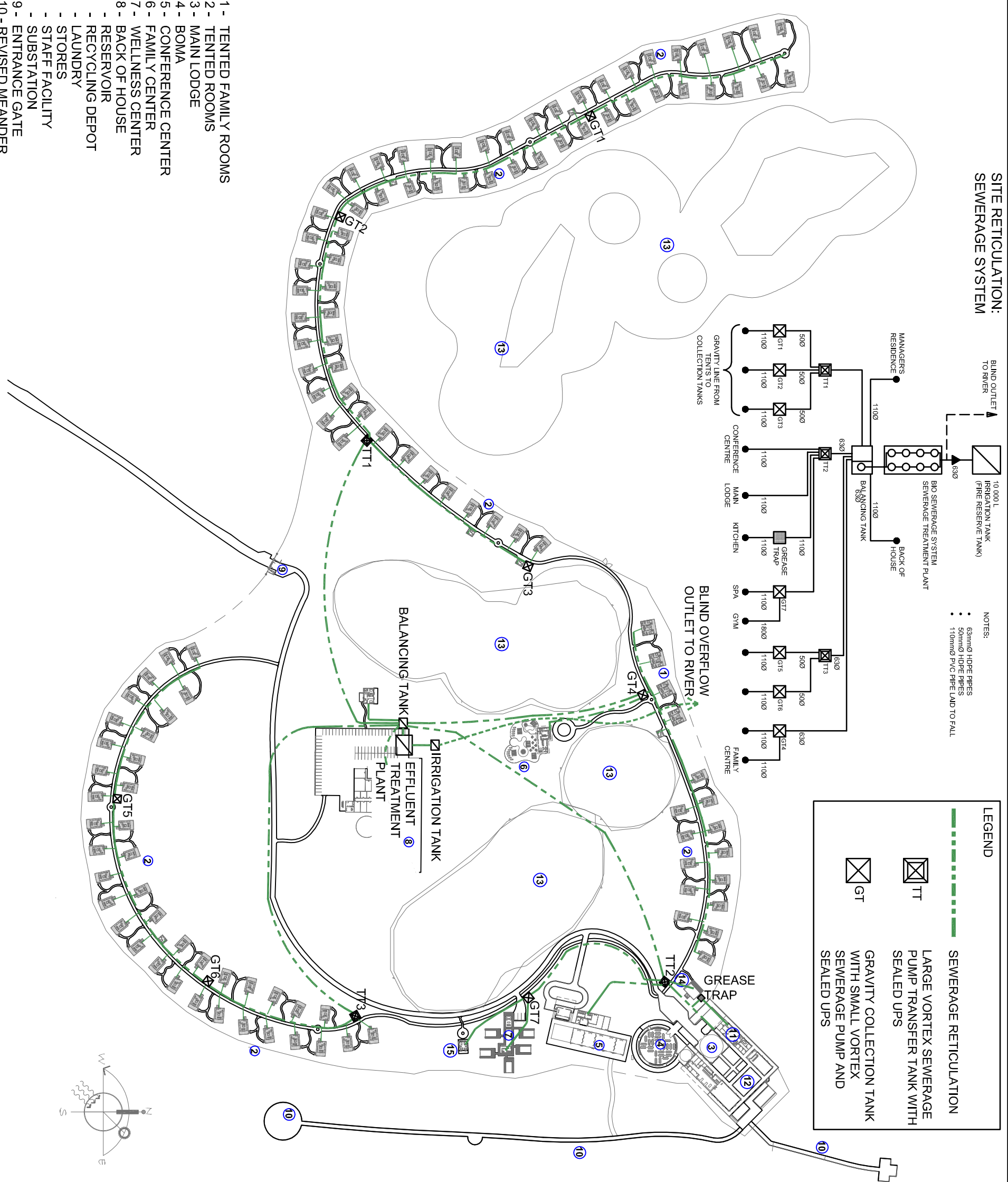


**SITE RETICULATION:
SEWERAGE SYSTEM:**



- NOTES:
- 63mm HDPE PIPES
 - 50mm HDPE PIPES
 - 110mm PVC PIPE LAD TO FALL

LEGEND

- SEWERAGE RETICULATION
- LARGE VORTEX SEWERAGE PUMP TRANSFER TANK WITH SEALED UPS
- GREASE COLLECTION TANK WITH SMALL VORTEX SEWERAGE PUMP AND SEALED UPS
- TT
- GT

- 1 - TENTED FAMILY ROOMS
- 2 - TENTED ROOMS
- 3 - MAIN LODGE
- 4 - BOMA
- 5 - CONFERENCE CENTER
- 6 - FAMILY CENTER
- 7 - WELLNESS CENTER
- 8 - BACK OF HOUSE
- RESERVOIR
- RECYCLING DEPOT
- LAUNDRY
- STORES
- STAFF FACILITY
- SUBSTATION
- 9 - ENTRANCE GATE
- 10 - REVISED MEANDER
- 11 - OFFICES
- 12 - COVERED ENTRANCE DECK
- 13 - PROTECTED PLANT SPECIES
- 14 - EDUCATION CENTER
- 15 - GYM

REVISION RECORD	
Date	DESCRIPTION
08/02/15	PRELIMINARY DESIGN FOR INFORMATION PURPOSES ONLY
1	D.N.

client **KRUGER NATIONAL PARK**

project **MALELANE SAFARI LODGE**

description **SITE PLAN
MAIN SEWERAGE RETICULATION
SCHEMATIC**

CONSULTING ELECTRICAL ENGINEERS (Pty) Ltd

28 Thora Crescent
Wynberg
Sandton
PO Box 808
Cromerview, 2060
South Africa
Tel: (011) 262 6078
Fax: (011) 262 6135
e-mail: info@watnata.co.za

drawn	design	approved	date
D.N.	D.F.	D.F.	08.02.2015

discipline **SEWERAGE** size **A3** scale **N.T.S.**

drawing no **RE14020/S/001/SR** rev. **1**