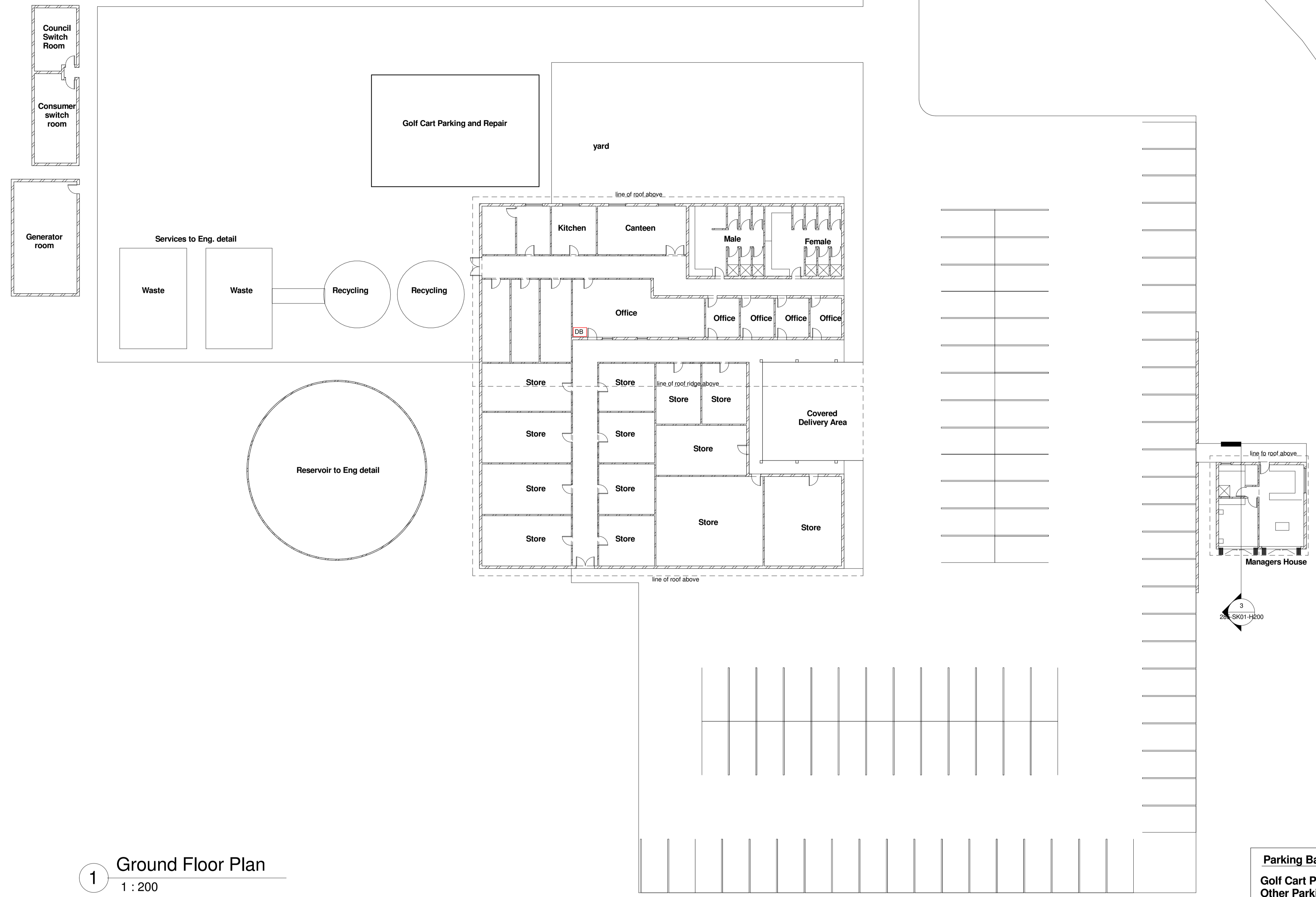
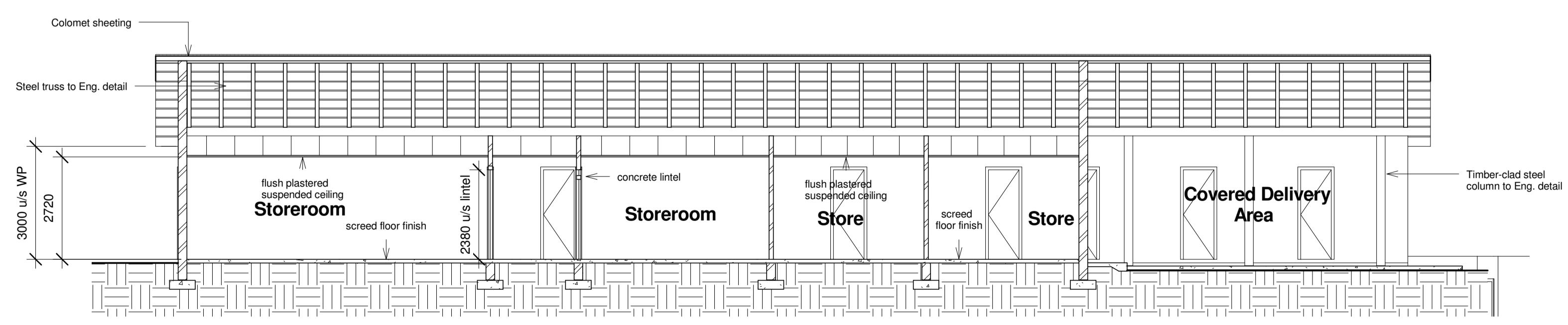


THIS DRAWING IS SUBJECT TO COPYRIGHT AND MAY NOT BE REPRODUCED IN WHOLE OR PART OR IN ANY MANNER WHATSOEVER WITHOUT WRITTEN PERMISSION FROM CRONJE ASSOCIATED ARCHITECTS CC

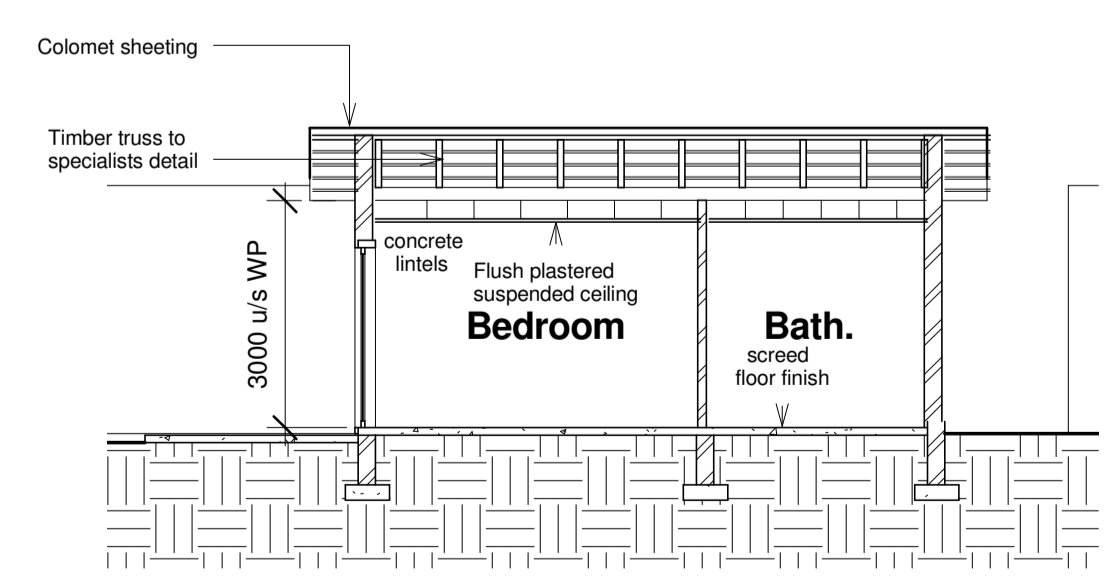
Revision Schedule			
Rev	Date	Description	Issued to
1	21/01/2011	1-Service Facility new layout and position	
2	03/02/2011	1 -Service Station moved down the slope away from the entrance gate	
3	14/02/2011	1 - Wall mounted DB added. 2- Manager's house moved to eastern side of staff facility car park. 3 - MV switch room added. 4 - Generator room added.	



**1** Ground Floor Plan  
1 : 200



**2** Service Facility Section A  
1 : 100



**3** House  
1 : 100

Parking Bays	
Golf Cart Parkings	30
Other Parkings	40

- ISSUE FOR COUNCIL SUBMISSION
- FOR INFORMATION ONLY
- FOR TENDER PURPOSES ONLY
- ISSUE FOR APPROVAL
- ISSUE FOR CONSTRUCTION

**SIGNED FOR CONSTRUCTION**

ARCHITECT: .....

CLIENT: .....

IF THIS DRAWING IS NOT SIGNED BY THE ARCHITECT IT IS NOT FOR CONSTRUCTION PURPOSES

**PROJECT**  
Radisson Blu- Safari Hotel- Kruger National Park

**DESCRIPTION**  
Staff/Service Facility Plan and Section

**CRONJE ASSOCIATED ARCHITECTS CC**  
Suite E MGA HOUSE  
Wimble Close  
Ballito Business Park  
Po Box 6438 Zimbabwe 4418  
Tel: +27 32 946 3830/1  
Fax: +27 32 946 3835  
email: llewellyn@caarchitects.co.za  
reg no 2621



<b>Drawn</b> Sarah	<b>Project nr:</b> Project Number <b>Sheet nr:</b> 285-SK01-H200	<b>Date:</b> 2011/05/19 09:32:23 AM
-----------------------	---	---

H:\CAARadisson Blu Mafikeng 285\1 Drawings\architect\sketch plans\revit\Design Drawings\N. Enfile Site and buildings\Radisson Blu- Kruger Park- SK01-REV18.rvt