

SPONSORED BY THE



Federal Ministry
of Education
and Research



In situ Measurements on Land Surface Dynamics in Pristine Environments – CO-LD-EMS First Years Activities

(BAAJ1519)

Jussi Baade¹,

**A. Kaiser¹, M. Geissler¹, C. Schmullius¹, C. Berger¹, M. Urban¹, U. Gessner², A. Hirner²,
H. Asamer², C. Glotzbach³, I. Smit⁴ & T. Strydom⁴**

¹FSU Jena, ²DLR, ³Uni Tübingen, ⁴SANParks

— 1 Introduction

**CO-LD-EMS is the descendant
of KNP Erosion and ARS Africae**

**Overall aim is to monitor and model
land surface dynamics in areas
with currently low direct human impact**

across a climate gradient in South Africa

— 2 Study sites

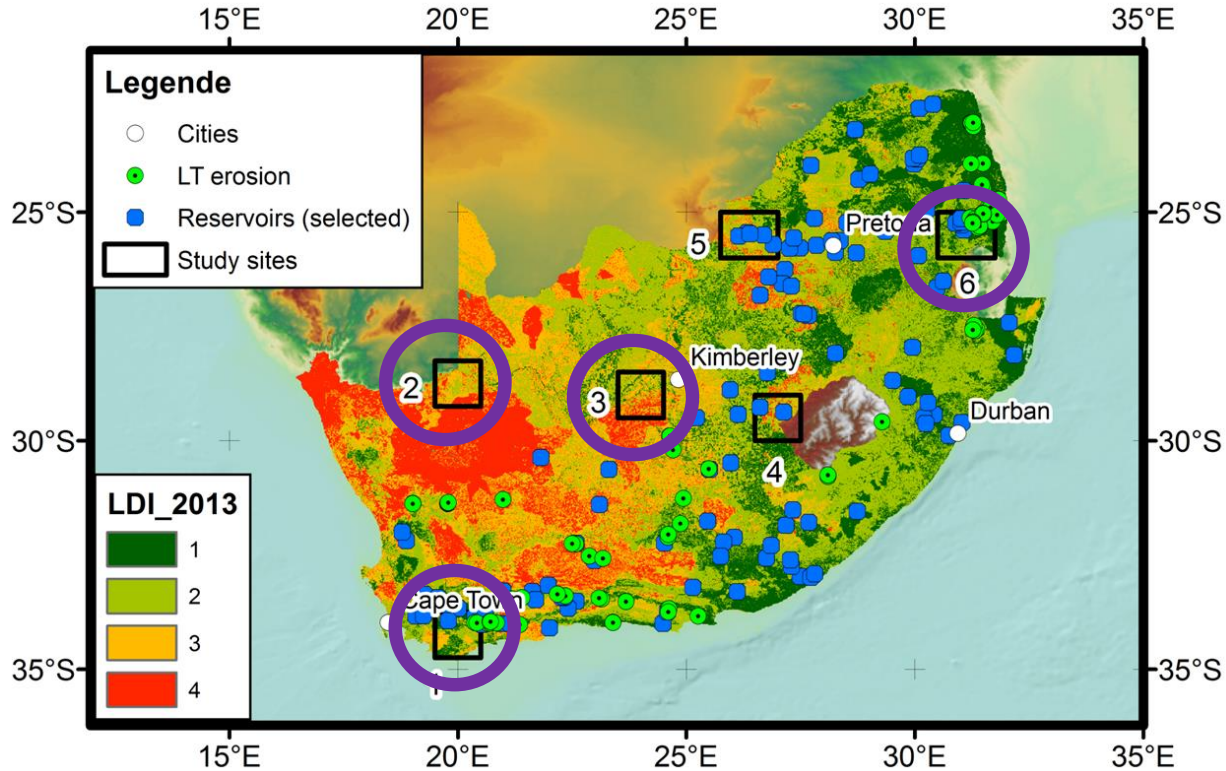


Fig. 1: CO-LD-EMS SANParks study sites:
1: Agulhas / Nuwejaars SMA , 2: Augrabies Falls, 3: Mokala, 6: KNP

— 3 Ground truthing activities



3 Ground truthing activities



Soil Moisture Tension (SMT)
network by UGT @ Nhlowa
supersite, March 2019



Rainfall simulation experiments (e.g.
@ Crocodile Bridge, Oct. 2019)

— 4 Details

Stay for the next presentations, come to see our posters and chat with us



Thank you for your attention



and the support by SANParks Scientific Services, Section Rangers,
Game Guards and other Helpers